

H3C Switch Optical Port Status





H3C Switch Optical Port Status



Support

l Optical port (including Combo optical port) does not support VCT (virtual-cable-test) function. l Combo electrical port supports VCT function only when it is in UP condition (using undo shutdown

H3C Fixed-Port Campus Switches Troubleshooting Guide-6W104

H3C recommends that you disable STP on the port, or configure the port as an edge port if the port is connected to a terminal device. i If the port belongs to an aggregation group, execute



How To Read Optical Module Information On H3C Switches

Reading optical module information during use helps understand its real-time operating status, allowing you to locate the cause of link abnormalities more quickly.

H3C S6890 SERIES TROUBLESHOOTING MANUAL Pdf Download

View and Download H3C S6890 Series troubleshooting manual online. S6890 Series switch pdf manual download.



H3C ES4200 Gigabit Switch Series-H3C

H3C ES4200 series is the latest development of Gigabit speed managed Ethernet switch. Besides high-performance access, it also offers abundant security access policy control and enhanced network



H3C Device Optical Copper Multiplexing Port Configuration Guide

In H3C network devices, a combo port (optical-copper multiplexing port) is a multifunctional interface that integrates two physical media: optical fiber and copper cable.



400G Optical Modules 2026 Guide: DR4 vs. FR4 vs. LR8 Lab

Our CCIE/HCIE team shares lab-tested benchmarks for DR4, FR4, and LR8, focusing on power efficiency, latency, and AI cluster scalability.

1 Connecting your switch to the network This chapter describes how to connect your switch to a network. The first time you access a switch you must log in through the console port. On the switch,



View Cisco, H3C all port status

But if the port of the switch is very long, and you want to know the status of all the ports, you have another command to enter, it is quite tiring, and the output of the result is too detailed to see people



Support

H3C S5130 Series Switches, When you troubleshoot xxx, follow these general guidelines: · To help identify the failure cause, collect system and configuration information, including: ? Symptom, time of



H3C S5130-HI Switch Series Troubleshooting Guide-6W101

H3C S5130 Series Switches, When you troubleshoot xxx, follow these general guidelines: · To help identify the failure cause, collect system and configuration information, including: ? Symptom, time of



1 Port Correlation Configuration The term switch in this document refers to a switch in a generic sense or an access controller configured with the switching function unless otherwise specified. When



Optical Transceiver Manufacturer, H3C Switch

H3C switch configuration description: Due to the use of port parameters, the port will be taken as a reference, that is, at this time, port E0 / 1 only allows PC1 to access



Support

4 Connecting your switch to the network This chapter describes how to connect your switch to a network. The first time you access the switch, you can only log in to the CLI through the console port



Support

A port supports one way of broadcast suppression at the same time. If broadcast suppression has been configured for a port for multiple times, only the latest configuration takes effect. Examples # Allow



H3C Switch Command Mastery: Streamlined

In today's fast-paced network environments, H3C switches form the backbone of enterprise connectivity. While many administrators rely on GUI configurations,



Support

4 Connecting your switch to the network This chapter describes how to connect your switch to a network. Accessing the switch for the first time The first time you access the switch you must use a

04-Chapter 4 Connecting Your Switch to the Network

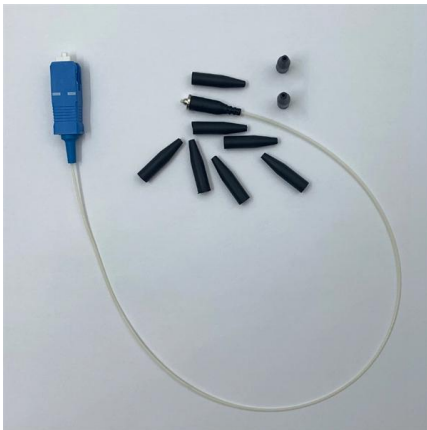
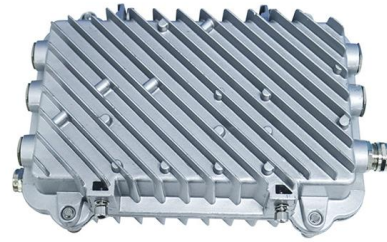
Connecting your switch to the network through twisted pair cables The 10/100Base-TX and 1000Base-T ports of the H3C S7500E switches use RJ-45 connectors and support MDI/MDI-X auto-sensing.



Support

Home Support Switches H3C S3100 Switch Series Configure & Deploy Configuration Guides H3C S3100 Series Ethernet Switches Operation Manual (For Soliton) (V1.02)

Home Support Switches H3C S3100 Switch Series Reference Guides Command References H3C S3100-52P Ethernet Switch Command Manual-Release 1500 (V1.01)



Basic CLI Commands on H3C Switch

Learn how to create users, VLANs, enable Telnet and SSH, configure Spanning Tree Protocol, enable DHCP snooping, define trunk ports, and create access ports on

Support

Home Support Switches H3C S9500 Series Switches Reference Guides Command References H3C S9500 Command Manual-Release1648 [v1.24]-01 IP Access Volume



H3C Fixed-Port Campus Switches Troubleshooting Guide

If the port belongs to a smart link group, execute the display smart-link group command to verify the port status. The port cannot forward packets if its state is standby or down.





H3C Fixed-Port Campus Switches Troubleshooting Guide-6W104

H3C recommends that you disable STP on the port, or configure the port as an edge port if the port is connected to a terminal device. If the port belongs to an aggregation group, execute the display link



Support

Use the display transceiver interface command to display the major parameters of the optical transceiver plugged in the specified port or all optical transceivers if no port is specified.

Cisco XFP vs. SFP vs. SFP+ (2025 Guide): Differences,

Discover the differences between Cisco SFP, SFP+, and XFP optical transceivers -- including speed, wavelength, distance, and compatibility. Learn



Length:14.5mm
Small-end inner diameter:2.0mm
Large-end inner diameter:3.5mm
Outer diameter:5.2mm



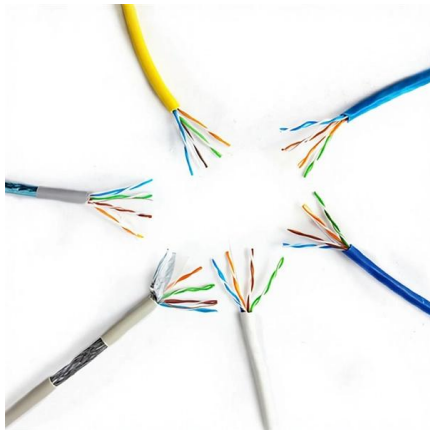
How To Turn Off Alarms For Third-Party Modules On H3C Switches

When a third-party optical module is installed on an H3C switch, the module can normally link up, but port logs will display alarm messages indicating an uncertified non-H3C module.



04-Chapter 4 Connecting Your Switch to the Network

The 10/100Base-TX and 1000Base-T ports of the H3C S7500E switches use RJ-45 connectors and support MDI/MDI-X auto-sensing. Use category-5 twisted pair cables or above to connect the



Support

The 10/100Base-TX and 1000Base-T ports of the H3C S7500E switches use RJ-45 connectors and support MDI/MDI-X auto-sensing. Use category-5 twisted pair cables or above to connect the

H3C Fixed-Port Campus Switches Troubleshooting Guide-6W104

When you troubleshoot the switch, follow these general guidelines:

- To help identify the failure cause, collect system and configuration information, including:
- Symptom, time of failure, and



H3C S7500 SERIES SWITCH COMMAND MANUAL , ManualsLib

View and Download H3C S7500 Series command manual online. PoE Ethernet Switches. S7500 Series switch pdf manual download.



H3C Switch Command Mastery: Streamlined

This article provides a hands-on guide to 50+ essential H3C switch commands, revealing hidden shortcuts and best practices derived from real-world



Contact Us

For datasheets, pricing, or custom high-speed optical interconnect solutions, please visit:
<https://www.syropy.com.pl>