

Gyxtw optical cable structural parameters





Gyxtw optical cable structural parameters



GYXTW 2-24 Core Outdoor Cable Specs , PDF

GYXTW Datasheet - Free download as PDF File (.pdf), Text File (.txt) or read online for free. This document summarizes the specifications of an outdoor optical cable with 2-24 fiber cores. The cable

Central Loose Tube Outdoor Cable GYXTW

Specifications info: GY-T-X-W GY: tical Cable Communication X: Cable Center (coating) structure T: Ointment filling structure W: Parallel bonded wire + PE jacket

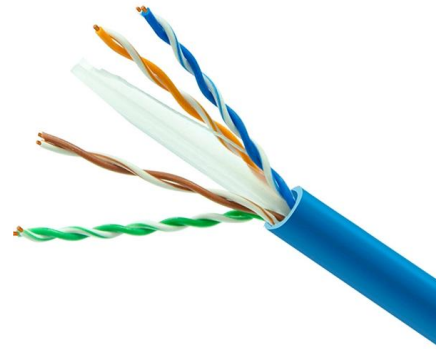


GYXTW Outdoor Miniature Central Beam Tube Type Fiber Optical Cable

Product Introduction Technical Parameter Product application: GYXTW outdoor miniature central beam tube type fiber optical cable is applied to remote and interoffice communication; laying mode:

Understanding GYXTW Outdoor Fiber Optic Cable:

GYXTW adopts a central loose tube structure, with optical fibers placed inside a gel-filled tube for moisture protection. Two parallel steel wire



What are the characteristics and applications of GYXTW optical cable?

GYXTW fiber optic cable is a central tube type cable, which means that the optical fiber is placed in the center of the cable core. This design provides protection for the optical fibers and makes the cable



What is the GYXTW fiber optic cable?

GYXTW form of fiber optic cable is one that has an outer tube structure laid in the air, most suitable for outdoor environments of overhead



GYXTW 2-24Core Outdoor Optical Cable

Report certificate: It includes optical cable inspection number, optical cable type, core number, optical fiber type, length, etc





GYXTW53 Underground Directly Buried Central Outdoor

GYXTW53 Underground Directly Buried Central Outdoor Loose Tube Fiber Optical Cable Product Structure Diagram

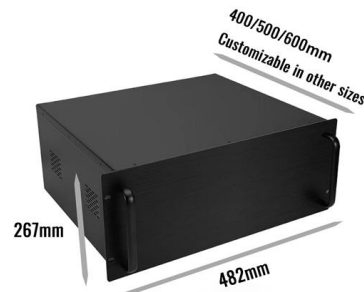


GYXTW 2-24 Core Outdoor Optical Fiber Cable

The cable features two parallel steel wire strength members encased in the PE outer jacket. Adapted to outdoor distribution. Suitable for external applications in ducts and aerial applications. Long distance

GYXTW 2-24Core Outdoor Optical Cable

Specification GYXTW 2-24Core Outdoor Optical Cable Product structure diagram Optical fiber Tube filling compound PBT loose tube



GYXTW OUTDOOR FIBER CABLE

This specification covers the design requirements and performance standard for the supply of optical fiber cable. This specification covers the general requirements and performance of cable which our



GYXTW OUTDOOR FIBER CABLE

GYXTW --AERIAL INSTALLATION CABLE 1.1 SCOPE
This specification covers the design requirements and performance standard for the supply of optical fiber cable. This specification covers



GL FIBER supply GYXTW cable from 2 fiber cores to 24 fiber cores.

GYXTW fiber optic cable is an outdoor use optical fiber cable suitable for duct and aerial applications. GL supply GYXTW cable from 2 fiber cores to 24 fiber cores. As a experienced fiber cable factory,

GYXTW 2-24 Core Outdoor Optical Fiber Cable

Product Description GYXTW outdoor fiber optic cable, is also called single loose tube steel tape armored cable, is consisted of 250um fibers held in an gel filled central loose tube surrounded by



Data Sheets

SYSTEMS Structure: Applications: Optical Fiber Cable GYXTW 4-8-12 Core Fiber Fiber Paste Loose Strength Member Water Blocking Tape Corrugated Steel-Plastic Composite Outer Sheath External





ADSS Fibre Optic Cable 6/12/24 Cores

Introduction The Fibre Optic Cable GYXTW SM 6/12/24 Fibre is a robust and reliable solution for various network applications. GYXTW is an outdoor use optical fibre cable suitable for duct and aerial



12-Core Outdoor Single Mode Fiber Optic Cable

properties Double-jacket structure make cable have nice properties of moisture resistance and crush resistance With small cable diameter, light cable weight,

GYXTW OUTDOOR FIBER CABLE

This specification covers the general requirements and performance of cable which our offering including optical characteristics, mechanical characteristics and geometrical characteristics.



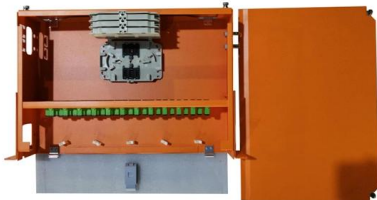
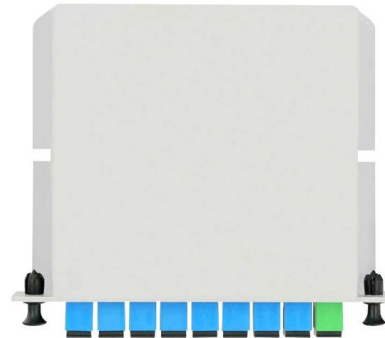
GYXTW Armored Optical Fiber Cable Specs , PDF

GYXTW Armored Optical Fiber Cable Specs The document outlines the specifications for an armored optic cable (GYXTW), detailing its construction,



Central Loose Tube Outdoor Cable GYXTW

Excellent mechanical and environmental performance Adopt optic fiber ribbon compact structure light weight GY:Outdoor Optical Cable Communication T: Ointment filling structure



GYXTW 4B1 6B1 8B1 12B1 GYXTW53 Fiber Optic Cable

GYXTW cables are known for their excellent mechanical and temperature resistance. The loose tube structure prevents damage from environmental factors, while the

Layer Stranded Armoured Optical Cable

GYXTW Outdoor optical cable for communication with a central tube filling, metal reinforcing member, steel-polyethylene bonded sheath incorporating parallel steel wires.



Outdoor Fiber Optic Cable GYXTW

Prose outdoor optical fiber FC03 series cables are designed for fiber solutions with excellent performance which exceed TIA / EIA 568.3-D, ISO / IEC 11801, EN50173 require.



GYXTW 12 core

Product Specification For Optical Fiber Cable
GYXTW 1. Optical Fiber Cable Features



GYXTW 12 Core Light Armored Cable Fiber Optic Cable

Product Description: GYXTW 12 Core Light Armored Cable Fiber Optic Cable The structure of GYXTW optical cable is to put 250um optical fiber into loose tube made of high modulus material, and the

GYXTW Fiber Optic Cable - Everything You Need to Know

GYXTW is a fiber optic cable that can serve overhead, buried and through-tube scenarios according to line design requirements.



Contact Us

For datasheets, pricing, or custom high-speed optical interconnect solutions, please visit:
<https://www.syropy.com.pl>