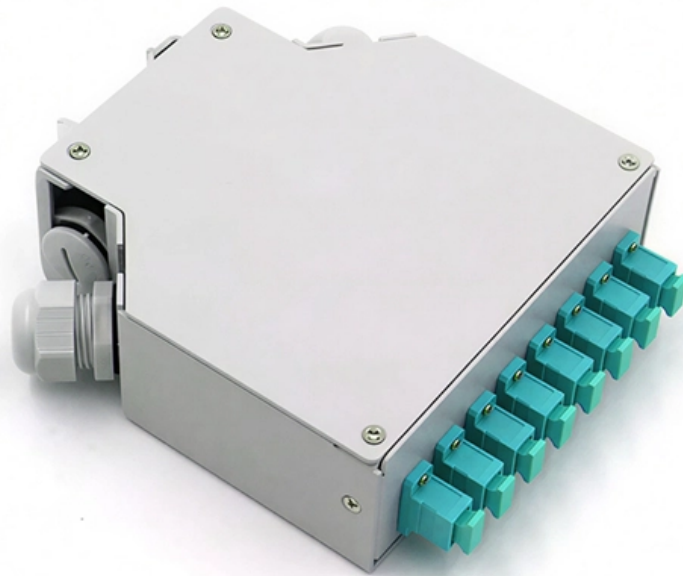


Grounding of the distribution box beam





Overview

Grounding of the units: Attach a ground wire from one of the threaded studs (A) at the bottom of the housing, to the mounting plate (B). 26 mm² (10 AWG) ground wire must be used, and in all other markets a 6 mm² must be used. This publication gives you general guidelines for installing an Allen-Bradley industrial automation system that may include programmable controllers, industrial computers, operator-interface terminals, display devices, and communication networks. Today, we're diving deep into the world of distribution box grounding, breaking down the standards, and shining a light on those sneaky mistakes that even experienced electricians sometimes make. Whether you're a seasoned pro or just starting out, this comprehensive guide will give you practical. latest releases of the ESQCR, BS EN 50522, ENA TS 41-2 N Distribution Substation Earthing Design ool. IN ELECTRICAL STATIONS INCLUDING TRANSMISSION AND DISTRIBUTION SUBSTAT GR THAN 8 FT FROM THE FENCE. THE FENCE SHALL BE GROUNDED SEPARATELY FROM THE GRID UNLESS OTHERWISE NOTED ON THE A PROPRIATE PROJECT DRAWING.



Grounding of the distribution box beam



GROUNDING OF UTILITY AND INDUSTRIAL DISTRIBUTION

Essentially this workshop is broken down into system grounding, protective grounding and surge/noise protection of power and electronics systems normally found in distribution networks. A brief

DUKE UNIVERSITY CONSTRUCTION STANDARDS 1

Introduction Grounding is utilized within electrical distribution systems to provide an alternative, low- impedance path around the electrical system for short circuit current to flow during a line to ground



MTP MPO SC-Type Fiber Adapter



Grounding in Power Transmission and Distribution Networks

Power transmission and distribution systems are earthed for electric shock and fault protection. This chapter presents the principles and practices of grounding for power systems. An earthed power

Industrial Automation Wiring and Grounding Guidelines

Purpose3 Route ConductorsMounting, Bonding, and GroundingMounting and Bonding the ChassisBonding and Grounding the ChassisCommon Power Source for I/OUnder-Voltage ShutdownAvoiding Unintentional



Momentary Turn-on of OutputsWorldwide representation.With solid-state controls, proper bonding and grounding helps reduce the effects of emi and ground noise. Also, since bonding and grounding are important for safety in electrical installations, local codes and ordinances dictate which bonding and grounding methods are permissible. For example, for U.S. installations, the National Electrical Code See more on literature.rockwellautomation Missing: distribution boxMust include: distribution boxcoloriagroup



Grounding System Installation Standards for Distribution Boxes and

Whether you're a seasoned pro or just starting out, this comprehensive guide will give you practical insights into proper grounding techniques, with a special focus on how selecting quality materials



How do you ground a plastic electrical box

Here are the steps on how to ground a power distribution box: 1. Preparation: First, you need to prepare some necessary tools, including

GROUND GRID SPECIFICATIONS

Each Power Circuit Breaker or Power Transformer having a bushing Voltage Transformer on the tank shall have the Voltage Transformer provided with a separate ground lead, independent of the



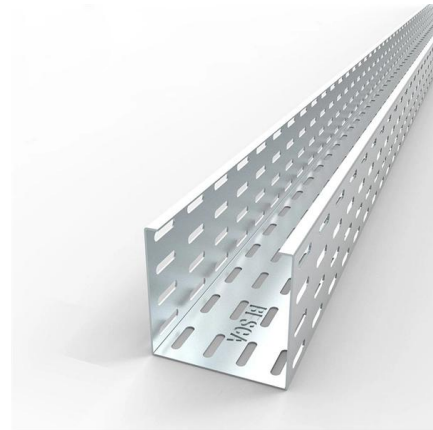


How to ground the low voltage distribution box?

The manufacturer of low-voltage distribution box indicates that this is called the zero connection protection system. TN-C power supply system uses the working zero

How to determine the size, installation method and

(1) Wiring method of distribution box 1)
Generally, the incoming line of power distribution box adopts five wire system, that is, a, B and C three-way phase line



Size determination, installation method and wiring mode

The distribution box is the central hub of the home circuit and the general control of our daily power consumption. It is an indispensable electrical equipment. If there

Grounding Electrical Distribution Systems , part of Grounding

The first concern and the most important reason for proper grounding techniques are to protect people from the effects of ground-faults and lightning. Creating an effective ground-fault current path to



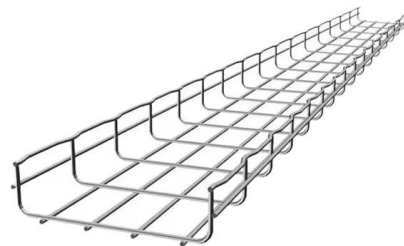


System Grounding

Knowledge of the various types of system grounding and performance characteristics is critical when designing or operating an electrical system. The voltage, system arrangement, loads connected, and

The Basics of Grounding and Bonding

Article 250 of the NEC covers the grounding and bonding of electrical systems. By definition, as well as by function, grounding and bonding are not the same thing.



Grounding or Earthing Scheme in DCS or PLC Systems

Improper earthing or grounding of Distributed Control System (DCS) or Programmable Logic Controller (PLC) may result in either mal-operation of the

Distribution System Grounding , part of Electric Power and Energy

Summary

Good system grounding provides the path for normal load and fault currents while maintaining load and controls temporary overvoltages. Good equipment grounding ensures





Electrical Box Ground Wire Connectors & Connections

How to make proper & safe electrical ground wiring connections in the box: This article describes options for connecting a metal electrical box to the grounding conductor & connecting the grounding

The Complete Guide to Distribution Box: Installation, Types & More

What's the difference between a distribution box and a sub-panel? A distribution box typically refers to the main electrical panel that receives power from the utility service. A sub-panel is



A Definitive Guide To Distribution Boxes

The distribution box acts as the center of power distribution, distributing electricity to all connected devices. A distribution box, also known as a distribution board, panel board, breaker

Technical Specification for Earthing and Bonding at EART-03-003

For ground-mounted substations, the legacy practice in SPEN (and other DNOs) was to install HV and LV Earthing Systems with an HV Earth Resistance of 40 Ω and an LV Earth Resistance of 20 Ω .





GROUNDING OF UTILITY AND INDUSTRIAL DISTRIBUTION

In this workshop, we will demystify the concepts of grounding as applicable to utility networks and industrial plant distribution systems as well as their associated control equipment.



DISTRIBUTION BOX

Each DISTRIBUTION BOX and controller must be grounded. On the US market, a 5.26 mm² (10 AWG) ground wire must be used, and in all other markets a 6 mm² must be used.



The Importance of Ground Wires in the Breaker Box: A

The ground wire in a breaker box is a crucial element of an electrical system, providing safety and preventing electrical shocks. Learn more about its

Distribution System Grounding

Good system grounding provides the path for normal load and fault currents while maintaining load and controls temporary overvoltages. Good equipment grounding ensures





The Basics of Substation Grounding: Parts of the

One of the vital aspects of the protection of people and equipment in electrical substations is the provision of an adequate grounding system. The



Section 26 05 26 Grounding and Bonding for Electrical Systems

Equipment Grounding: Metallic piping, building structural steel, electrical enclosures, raceways, junction boxes, outlet boxes, cabinets, machine frames, and other conductive items in close proximity with

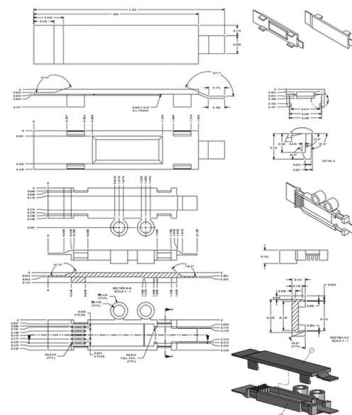


JLC Field Guide: Grounding

JLC Field Guide: Grounding The purpose of grounding is safety: A ground wire generates a short circuit and trips the circuit breaker or fuse when

Distribution System Grounding

Improper grounding in secondary systems can cause safety issues including fire and failure of equipment in homes. Most common problems are open secondary neutral, load incorrectly





Distribution box with standard cable (for up to 4

With this convenient distribution box with a standard pin cable you can connect up to 4 grounding products with a grounded wall socket or a grounded extension cord

Contact Us

For datasheets, pricing, or custom high-speed optical interconnect solutions, please visit:
<https://www.syropy.com.pl>