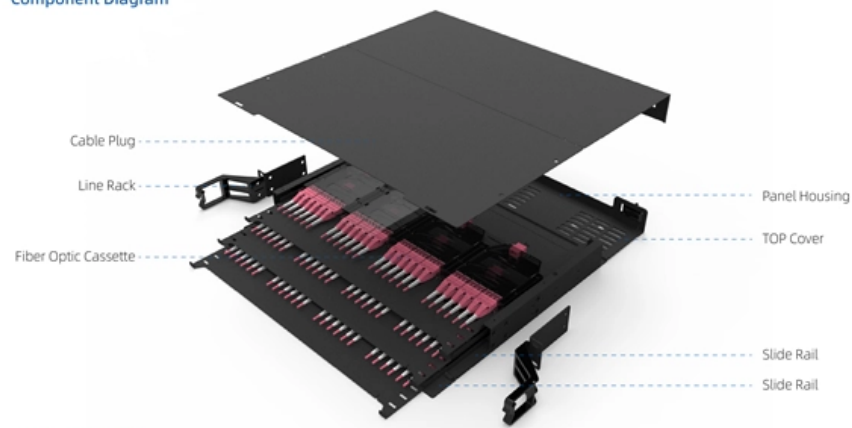


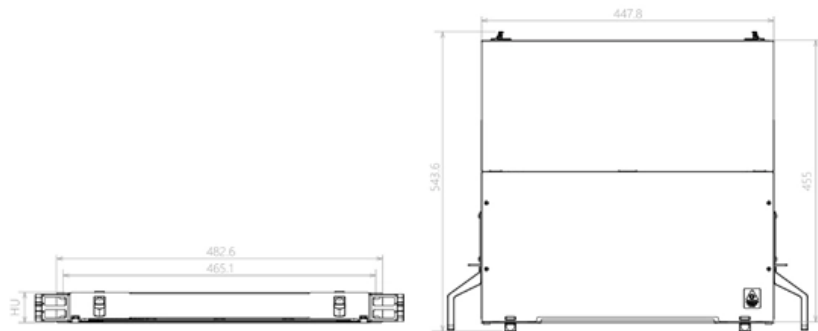


# Grounding copper lug for distribution box

## Component Diagram



## Key dimensions





## Grounding copper lug for distribution box

---



### GROUNDING LUGS , Associated Fasteners

Explore our selection of grounding lugs, designed for safe and reliable grounding in electrical systems. Grounding lugs provide essential connections for grounding wires to metal surfaces, offering critical

### KHBUAB 4 Pcs Copper Grounding Terminal Lugs 10-Hole Screw

KHBUAB 4 Pcs Copper Grounding Terminal Lugs 10-Hole Screw Terminal Block Distribution Wire Electrical Ground Bar for Power Supply and Neutral Wiring in Distribution Boxes



- ✓ Slow Axis Aligned (0°) - for standard sensing applications
- ✓ Fast Axis Aligned (90°) - for special modulation applications
- ✓ 45° Axis Aligned - for depolarizer applications

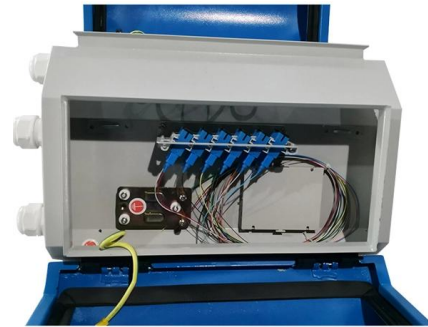


### Copper Earthing Lug

Copper Earthing Lug ensure secure, corrosion-resistant cable terminations in grounding systems. High-conductivity lugs for reliable and long-lasting earthing.

### How to Ground an Electrical Panel: A Complete Guide

Learn how to ground an electrical panel step-by-step. Ensure safety, code compliance, and protect your home from electrical hazards.



**Grounding Lug Kit, fits AWG 2-14 wire, Tinned, Steel**




Grounding Straps can be used to provide electrical continuity between metal parts



**How To Ground Your Electrical Panel and Service Disconnect**

Electrical Grounding & Bonding: Top Mistakes to Avoid for a Successful Installation: Don't make common mistakes that can lead to a dangerous electrical system. Follow this video to learn what to

Ordering information

NO.	1	2	3	4	5	6
Model	SP1201	SP1202	SP1203	SP1204	SP1205	SP1206
Product name	Patch Panel	Patch Panel	Patch Panel	Patch Panel	Patch Panel	Patch Panel
Illustration						
NO.	1	2	4	1	2	4
Maximum number of ports	144	288	576	144	288	576
Product size (including module and adapter)	482.0*160*74 mm	482.0*160*76.1 mm	482.0*160*77 mm	482.0*160*74 mm	482.0*160*76.1 mm	482.0*160*77 mm
Standard color code	RAL9005	RAL9005	RAL9005	RAL9005	RAL9005	RAL9005
Inventory	2	2	2	2	2	2



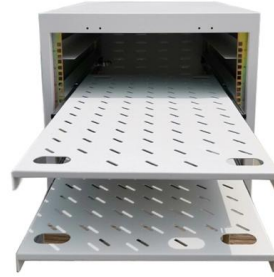
**Grounding**

Exposed ground connections to power generation and distribution equipment shall be made using copper compression ground fittings or compression lugs bolted to the equipment. Splices and taps of



## Industrial Automation Wiring and Grounding Guidelines

The grounding-electrode system is at earth-ground potential and is the central ground for all electrical equipment and ac power within any facility. Use 8 AWG copper wire minimum for the grounding



### Search

Search Up to 36% lower carbon footprint than standard plastic cable ties Globally, only 9% of plastic waste is recycled, and by 2050, up to 12 billion tons could pollute our landfills, waterways, and

### Bus Bars , Copper & Terminal Grounding Bus Bars & Kits Online , RS

Shop grounding busbar solutions at RS. Find reliable grounding bus bar products for safe electrical connections. Order online today.



### Electrical Box Ground Wire Connectors & Connections

How to make proper & safe electrical ground wiring connections in the box: This article describes options for connecting a metal electrical box to the grounding conductor & connecting the grounding



### DISTRIBUTION BOX

Each DISTRIBUTION BOX and controller must be grounded. On the US market, a 5.26 mm<sup>2</sup> (10 AWG) ground wire must be used, and in all other markets a 6 mm<sup>2</sup> must be used.

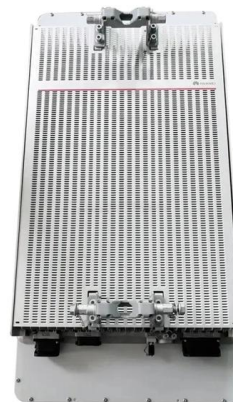


### Ground Fittings - Clamps, Bolts & Lugs

Shop ground fittings for electrical grounding--clamps, split bolts, and lugs in bronze, copper, and steel. NEC-compliant and built for durability.

### DUKE UNIVERSITY CONSTRUCTION STANDARDS 1

Equipment grounding conductors shall be insulated with green colored insulation. Grounding electrode conductors shall be stranded cable. Grounding electrodes (i.e. ground rods) shall be 3/4 inch x 10



### Grounding and bonding Lugs at Lowes

Our 4 conductor mechanical lug is manufactured from high strength aluminum alloy and suitable for copper and aluminum conductors. Over the years ILSCO built a



## DISTRIBUTION BOX

Each DISTRIBUTION BOX and controller must be grounded. On the US market, a 5.26 mm<sup>2</sup> (10 AWG) ground wire must be used, and in all other markets a 6 mm<sup>2</sup> must be used.



## Grounding Lugs

AFT is your source for high-quality grounding lugs. Choose the size and style that fits your application. Shop AFT for grounding lugs, also known as wire lugs or terminal lugs. Grounding lugs are offered in

## Service Panels

The service panel houses incoming cables from the meter as well as the breakers and wires that distribute electricity to individual circuits. At the service, neutral



## 90° Grounding Lugs

Tin plated CDA 110 copper alloy provides the ideal grounding solution and superior protection in corrosive salt spray environments. Use of a 1/2" stainless steel washer over the ground lug



## Grounding Lugs Explained for Electrical Grounding

Learn how grounding lugs are selected and used in electrical grounding systems, covering materials, types, installation, and compatibility with



### Grounding Lugs , McMaster-Carr

Choose from our selection of grounding lugs, including wire terminals and terminal blocks, bonding and grounding, and more. Same and Next Day Delivery.

### Grounding Blocks , McMaster-Carr

Choose from our selection of grounding blocks, including over 750 products in a wide range of styles and sizes. Same and Next Day Delivery.



### Grounding System Installation Standards for Distribution Boxes and

Whether you're a seasoned pro or just starting out, this comprehensive guide will give you practical insights into proper grounding techniques, with a special focus on how selecting quality materials



## Contact Us

---

For datasheets, pricing, or custom high-speed optical interconnect solutions, please visit:

<https://www.syropy.com.pl>