

Grounding busbar specifications for distribution boxes

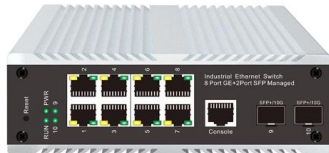




Grounding busbar specifications for distribution boxes

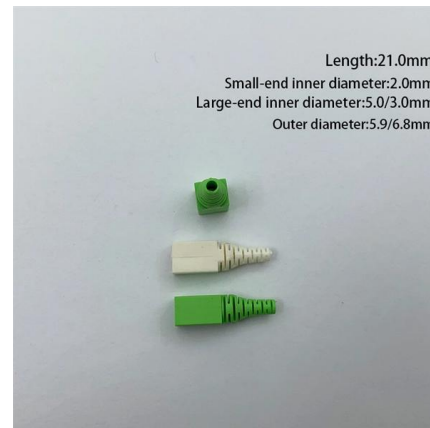
Design Guide for bus bars

Early involvement enables us to optimize both ease of manufacturing and turnaround time. We recommend that you contact a new-product development engineer



Bus Bars , Copper Ground Bus Bars , Burndy

These grounding bus bars are highly customizable, featuring a variety of hole and slot patterns to meet specific project requirements. Burndy offers custom bus bar lengths up to 12 feet, allowing for tailored



Design and installation of low voltage busbar trunking

Three typical applications would be: Supply to large numbers of light fittings Power distribution around factories and offices Rising main in office blocks

Busbar Power Distribution Explained: Benefits, Types,

Discover the benefits, types, and applications of busbar power distribution systems. Learn why busbars offer efficient, safe, and space-saving



Bus Bars , Copper & Terminal Grounding Bus Bars & Kits Online , RS

From data centers to educational institutions, we can supply busbars and grounding products across the U.S. Both now and in the future, we have your electrical requirements covered.

DISTRIBUTION BOARDS CATALOG

Fully shrouded busbar with fire retardant thermal sleeves and lugs are shrouded with high thermal resistance plastic more over the bottom surfaces additional are protected with high electrical



2CDC446001D0201

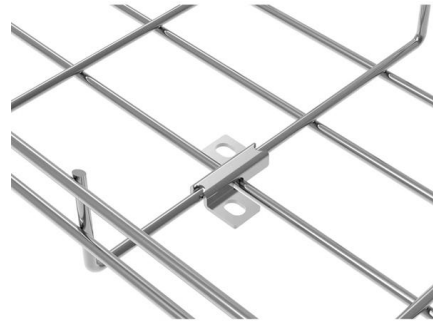
Busbar systems and installation accessories
When connecting aluminum conductors, ensure that the contact surfaces of the conductors are cleaned, brushed and treated with grease.





Understanding Electrical Ground Bus Bar: An Ultimate

Explore everything you need to know about the electrical ground bus bar, a critical component for safe and efficient electrical systems.



IEC Busbar Mounting System Specifications Technical Data

Summary of Changes
Catalog Number
Explanation
General Data
Catalog Number
Explanation
Additional Resources
Rockwell Automation Support(1) The admissible load of a complete system depends on the system topography and the application parameters. Factors of influence are ambient temperature, air circulation, busbar load, distribution of busbar load, mix of adapters and switchgear components. See more on literature.rockwellautomation nVent

Grounding Busbars , nVent ERICO

Ground bars provide a convenient, single-point grounding and bonding location. Conductors are welded to the bar using a nVent ERICO Cadweld exothermic connection or are mechanically fastened by

Grounding Buses , McMaster-Carr

Choose from our selection of grounding buses, including grounding bars, grounding blocks, and more. Same and Next Day Delivery.





What is a Busbar? A Detailed Guide

A busbar is a metallic strip or bar used in electrical power distribution, installed inside switchgear, circuit boards, and busway boxes to directly distribute

Ground Bus Bar: Code-Compliant Selection & Sizing

Learn what a ground bus bar is, how to size and select one, and how to install it to NEC/UL/TIA best practices for panels, racks, and telecom rooms.

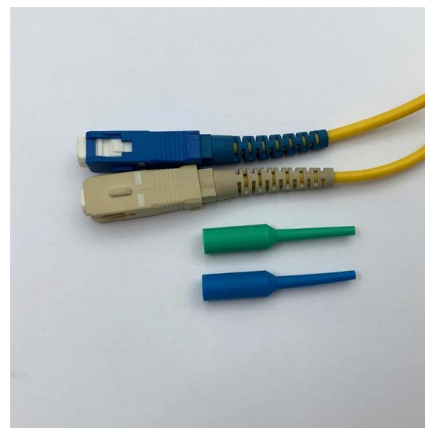


Diablo 400 Project: Rack and Power

This vertical busbar interconnects with various building blocks such as the AC/DC power shelf, energy storage shelves, HVDC output box, and protection modules. The busbar is designed

Bus Bars , Copper Ground Bus Bars , Burndy

Bus Bars Explore Burndy's range of copper bus bars, perfect for creating common ground points and facilitating power applications. These grounding bus bars are highly customizable, featuring a variety





Grounding Busbars

Safely and efficiently distribute ground current throughout your electrical system with our GB2D grounding busbar, available in various lengths to fit your exact needs.

Busbars and Grounding Strips

Item Available for Backorder Quick buy More Info
Panduit Panduit® GB2B0304TPI-1 Flat Grounding
Busbar, 254 mm L Bar x 50.8 mm MPN #
GB2B0304TPI-1 \$182.5278 / EA Item Available
for



DISTRIBUTION BOX

Each DISTRIBUTION BOX and controller must be grounded. On the US market, a 5.26 mm² (10 AWG) ground wire must be used, and in all other markets a 6 mm² must be used.

Busbars

Safe and economic connection ABB busbar systems enable safe and easy cross-wiring of miniature circuit breakers, residual current devices and other Modular DIN-Rail products. The following points





Copper Bonding Busbar (GRDBAR Series)

Hammond's GRDBAR series of copper bonding busbars are available in vertical, horizontal, and horizontal rack mounting configurations. Made of heavy-duty

Step-by-Step Busbar Installation Guide , Artizono

Imagine transforming a chaotic web of electrical connections into a streamlined, efficient powerhouse. Busbars are the unsung heroes of electrical

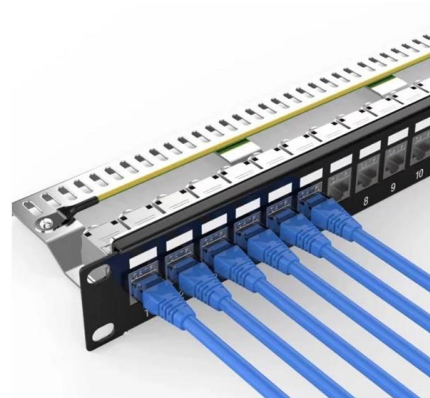


Grounding Busbars , nVent ERICO

Grounding Busbars Proper bonding is essential to create an equipotential plane between service grounds and equipment during fault and transient conditions. This equipotential plane provides a

Copper for Busbars - Guidance for Design and Installation

About this Guide Busbars are used within electrical installations for distributing power from a supply point to a number of output circuits. They may be

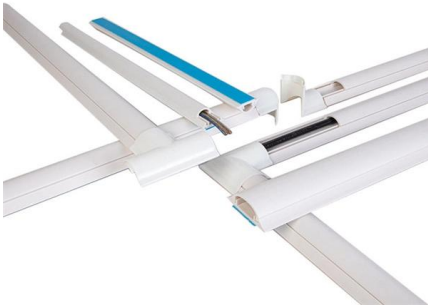


Grounding Requirements for Electrical



Cables, Cable Trays, and Busbars

Guidelines for grounding electrical cables, busbars, and cable trays in wiring projects, ensuring safety and compliance with industry standards.



Grounding Busbars

Grounding Busbars Harger provides quality UL Listed grounding busbars to the electrical and telecommunication markets.



Contact Us

For datasheets, pricing, or custom high-speed optical interconnect solutions, please visit:
<https://www.syropy.com.pl>