

Gponolt optical module optical attenuation





Gponolt optical module optical attenuation

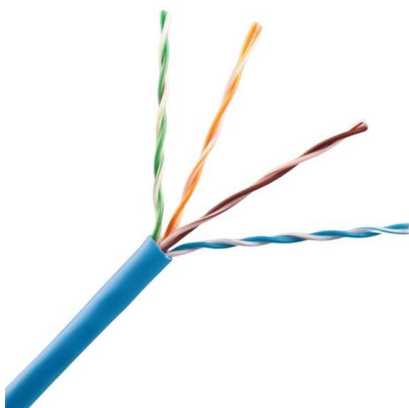


RLTECH PON (PON Line Indicators and Split Ratio Design)

PON line design requires comprehensive consideration of optical power budget, split ratio, transmission distance, and scenario demands?13. RLTECH provides stable PON solutions,

GPON OLT/ONU Optical Transceiver Modules

GPON transceiver technology is the latest generation of broadband passive optical integrated access technology based on ITU-TG.984.x standard - AscentOptics.

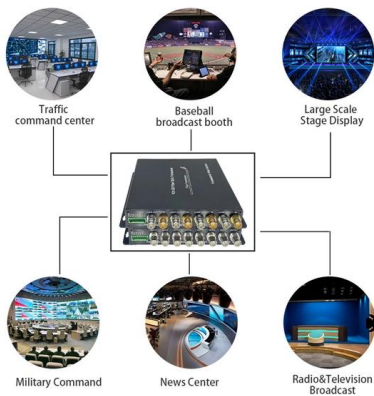


Understand GPON Technology

In this blog post, we'll provide an introduction to GPON optical modules and explore the key classification standards that define their

Gigabyte Passive Optical Network (GPON)

OLT - Optical Line Terminal sends and receives data at the service provider's central office. ODN - Optical Distribution Network includes fiber cables and passive splitters that distribute light signals to



GPON OLT C+ Optical Module Spec Sheet

Features & Benefits Supports ITU-T G.984.2 GPON OLT C+ application Single fiber bi-directional data links with symmetric 2.488Gbps Tx and 1.244Gbps Rx 1490nm continuous-mode transmitter with

ABC of GPON SFP: Understanding GPON OLT / ONU / ONT SFP Module

GPON SFP transceiver meets the the requirements of FTTx network to accelerate the speed or capacity. GPON OLT, ONU and ONT SFP module have their respective roles to play in the



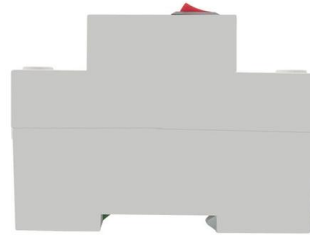
GPON SFP

From the Central Office's (CO) Optical Line Terminal (OLT, with SFP GPON transceiver/module) a single strand of fiber goes out to a passive optical splitter



Fiber Optic Attenuators: Wiki, Types, When and How to Use

Learn what fiber optic attenuator is, how it reduces the power level of an optical signal, different types of optical attenuators, and when and how to use them.



Optical-Module Parameter Inquiry and Alarm Configuration

Chapter 1 Optical-Module Parameter Inquiry and Alarm Configuration 1.1 Introduction of Optical Module's Parameters The parameters of optical module include the light transmission power, the

What is GPON ONU(ONT) and GPON OLT?

Key components of a GPON network include the GPON ONU (Optical Network Unit) or ONT (Optical Network Terminal) and the GPON OLT (Optical



Introduction to Optical Link Budget Between OLT and ONU

It covers all optical component losses and the transmit/receive capabilities between the OLT (Optical Line Terminal) and ONU (Optical Network Unit), ensuring stable operation within the design range.



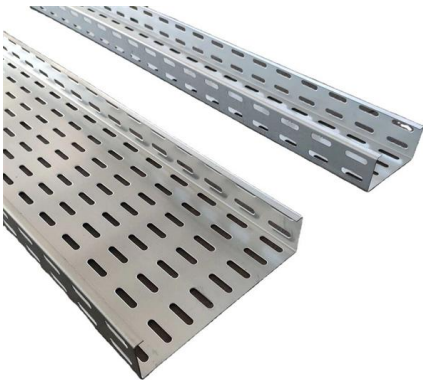
A brief introduction to GPON modules

In general, GPON OLT B+ can support 20KM 32 ONUs; GPON OLT C+ can support 20km 64 ONUs; while GPON OLT C++ has higher transmit optical power, smaller sensitivity at the



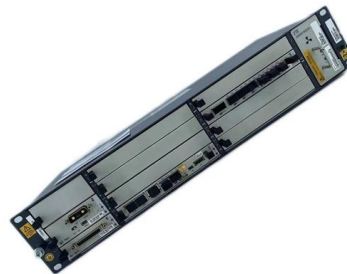
GPON OLT SFP Class C+ 20km DDM SC SMF Optical Transceiver Module

Description The GPON OLT SFP transceiver provides an asymmetric 1.244Gbps upstream and 2.488Gbps downstream, reaching a link up to 20km over SMF via SC/UPC connector. It can operate



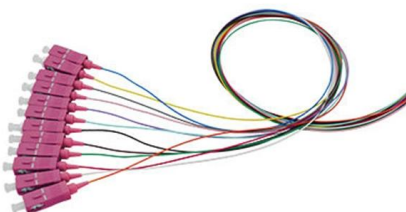
OLT (Optical line terminal) , G-PON (Gigabit passive optical network)

A gigabit passive optical network (G-PON) comprises optical line terminals (OLTs) and optical network units (ONUs), and Murata's lineup of products for use in OLTs is introduced here.



PON Module Parameters Guide: How to Choose the

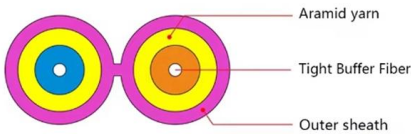
Discover key PON module parameters for selecting the best GPON and EPON modules. Understand their impact on network performance and make



Passive optical network



Passive optical network A fiber optic cable assembly with SC APC connectors, as commonly used to link optical network terminals to passive optical networks A



Everything You Need to Know About GPON SFP

An Overview of GPON SFP Modules Small form-factor pluggable transceivers known as Gigabit Passive Optical Networks (GPON) are designed

Cisco GPON SFP Data Sheet

Table 1 describes the optical parameters for the GPON class B+ SFP OLT transceiver module. Table 2 describes the optical parameters for the GPON class C+ SFP OLT transceiver module.



Passive Optical Network (PON): Attenuation and

In the process of FTTH deployment, OLT, and ONU equipment shall adopt optical modules not lower than px20 + (EPON) and class C + (GPON)

GPON OLT Optical Module Tx Power +9dBm



Functional Characteristics (Optical) The following tables list the performance specifications for the various functional blocks of the integrated optical transceiver module.

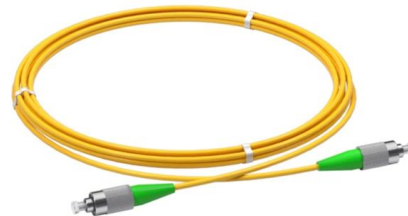


FTTH

GPON (Gigabit Passive Optical Networks) is an Optical System for the Access Networks, based on ITU-T specifications G.984 series. It can provide a 20 km

What is GPON and How Does it Work?

GPON (Gigabit Passive Optical Network) is a next-generation PON standard used to deliver broadband access to homes and businesses. It consists of OLT (Optical



Exploring the Functions of GPON OLT and ONT in

Learn about the functions of GPON OLT and ONT in an optical line terminal network. Explore the roles they play in a gigabit passive optical network.



The Ultimate Guide to Fibre Optic Attenuators

Working Principles of Fibre Optic Attenuators
Optical attenuators achieve the desired attenuation in optical fibre links in three different principles, which relatively are gap-loss principle, absorptive



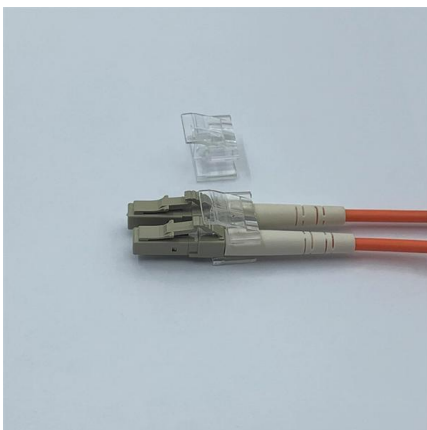
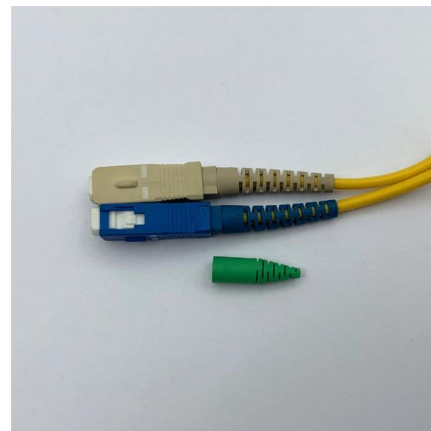
Slide 1

Intrinsic Fiber Absorption Figure 3.1: Optical fiber attenuation characteristics that bound the transmission window in GeO₂-doped, low-loss, low-OH-content silica fiber.



Technical-economic analysis to identify the acceptable maximum

Consequently, the definition of the attenuation threshold strongly affects the number of Trouble Tickets to be managed and the related costs the Wholesale Operator bears.



Optical attenuator

An optical attenuator, or fiber optic attenuator, is a device used to reduce the power level of an optical signal, either in free space or in an optical fiber. The basic types of optical attenuators are fixed, step



GPON OLT Basics and Beyond: A Comprehensive

Learn how GPON OLT works, its features, and how to choose the right device for efficient fiber network deployment.



Contact Us

For datasheets, pricing, or custom high-speed optical interconnect solutions, please visit:
<https://www.syropy.com.pl>