

Gesfp optical module 6





Gesfp optical module 6



Software Configuration Guide for the Cisco 6-port GE SFP Service

The Cisco 6-port GE SFP Service Module (SM-X-6x1GE) and Cisco 4-port GE SFP and 1-port 10 GE SFP Service Module (SM-X-4x1GE-1x10GE) are software-configurable high-speed

1G SFP - Optcore

Upgrade your network switches with various 1G SFP. Guarantee compatibility with Cisco, Arista, HPE and more. Save 80%, Fast shipping & 5-year warranty.



1G SFP - Optcore

1G / 1000BASE SFP Optcore's 1000BASE SFP transceiver is suitable for 1G Ethernet and fiber channel applications. Therefore, it is sometimes called 1G SFP

SFP Module Price

Find competitive sfp module prices for various optical transceivers. Our range includes 1.25G, 10G, and 25G modules with different reach and compatibility.

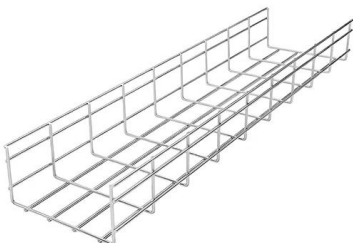


SFP Modules SFP and SFP+ Modules Small Form-Factor

Introduction Advantech's small form-factor pluggable (SFP) transceiver family is available with a variety of types of copper SFP and fiber SFPs, SFP+. This transceiver module is compliant

Huawei GE Optical Modules

Buy genuine Huawei GE optical modules from GenuineModules with best price and fast worldwide shipping.



The Big Differences Between SFP, SFP+, SFP28,

Optical modules, also known as transceivers, are devices that convert electrical signals to optical signals and vice versa. They are crucial for



10GE SFP+ Optical Modules

S200, S300, S500, and S600 Hardware Description This document describes all the configuration commands of the device, including the command function, format, parameters, views, default level,



Introduction of GE SFP Optical Modules

SFP Optical Modules (Small Form-factor Pluggable) are compact, hot-swappable transceivers used for telecommunication and data communication

2.5GBASE-SR SFP 850 nm 550 m DDM Multimode

The 2.5GBASE-SR SFP Optical Transceiver Module is a high-performance small form-factor pluggable SFP module for 2.5Gb/s serial optical



Transceiver optic Huawei SFP-25G-eLR-BXD1-I 02314LCK

SFP-10G-SR-C 02312UUE Transceiver optic Huawei Transceiver optic,SFP+, 10G,Modul multimodal (850nm,0.3km,LC) 20.00 Citeste mai mult



Wholesale SFP Modules: The 2025 Distributor Guide to

In this guide, we will reveal the best-selling module types you should stock in 2025 and how to succeed in the wholesale optical business.

Figure 1: Wolon optical



SFP-GE-LX-SM1310-BIDI 02315285 Transceiver optic Huawei

Transceiver optic,eSFP,GE,Modul BIDI monomod (TX1310/RX1490, 10km,LC)

10Gtek 1.25G SFP Transceiver 1000Base-LX, 1310nm SMF

1000BASE-LX/LH SFP to LC Optical Gigabit Ethernet Fiber transceiver module, 1.25G Singlemode MiniGBIC SFP (supports OS1/OS2/OS3 fiber cables), Duplex LC connector, 1310nm, DDM, up to 13km. [Wide Compatibility] Compatible with Cisco GLC-LH-SMD, Meraki MA-SFP-1GB-LX10, Ubiquiti UniFi, Fortinet,



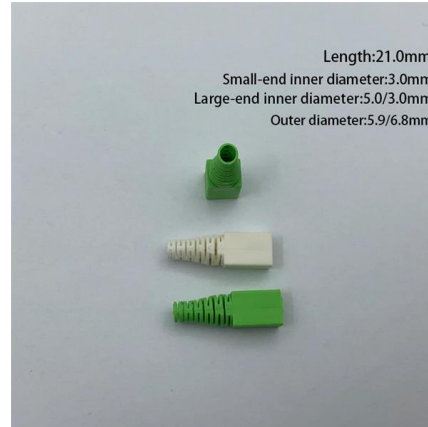
SFP GE SFP Guide

Multi-mode Optical 1000BaseSX SFP Interface per ODU Speed: 1 G Mode: Multi Wavelength: 850nm Kit Contents: SFP Module, Cable Gland (P16 Long), Licence Key document Spare Glands:



**Modul hibrid SFP-GE-Hybrid 02313SGL
Huawei , Hongtelecom**

Modul hibrid SFP-2.5G-Hybrid-I 02314LBJ
Huawei105.00 QSFP-100G-BIDI-G2 02314DBW
Emitator-receptor optic Huawei400.00



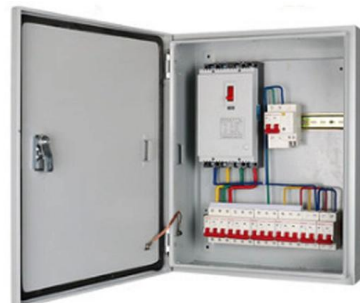
**2Pack 10GBase-T RJ45 SFP+ Transceiver,
10Gb SFP**

??10GBase-T SFP+ Transceiver?Support 10Gb/s data rate, fit for CAT6A/CAT7 cable, copper RJ-45 connector, reach up to 30m.?NOTE



**StarTech SFP10GLRSST Cisco SFP-10G-LR-S
Compatible SFP+ Module**

The SFP10GLRSST is a Cisco SFP-10G-LR-S compatible fiber transceiver module that has been designed, programmed and tested to work with Cisco(TM) brand switches and routers. It delivers



**SFP-GE-LX-SM1490-BIDI 02315286
Transceiver optic Huawei**

Transceiver optic,eSFP,GE,Modul BIDI monomod (TX1490/RX1310,10km,LC)



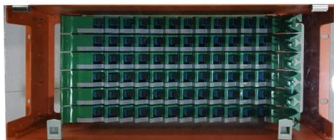
**Huawei SFP-GE-LX-SM1310 02315200
Single Mode SMF Transceiver Optical
Module**

Model Number SFP-GE-LX-SM1310 Type Fiber
Optical Transceivers Detail Huawei SFP-GE-LX-
SM1310 1.25Gbps 1310nm 10km SMF LC DDM
eSFP Optical Module 02315200 Brand Name



**Accessories 2.5G-SFP-LX03-SM1310-BIDI-I
2.5G BiDi SFP 1310nm**

As an industry-leading ICT infrastructure and
industry solution provider, Ruijie offers
customers a wide variety of high-density and low-
power 2.5G optical modules. They are applicable
to data center and



**XG-SFP-LR-SM1310 10GBASE-LR SFP+
1310-nm 10-km DOM**

XG-SFP-LR-SM1310 10GBASE-LR SFP+ 1310-nm
10-km DOM Duplex LC SMF Optical Transceiver
Module Applicable to data center and campus
networks, enabling cost-effective, efficient, and high



**Huawei OSX010000 SFP+ 10G Single Mode
Optical**

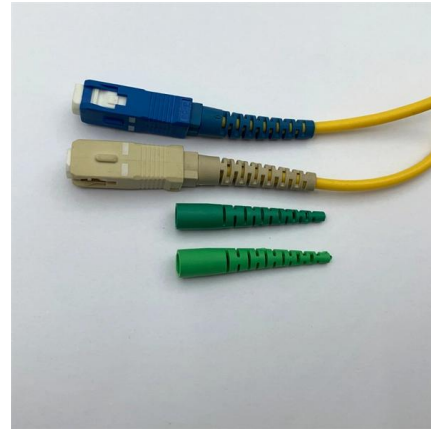
Huawei OSX010000 SFP+ 10G transceiver for
single-mode fiber, 1310nm wavelength, 10km
range. Compliant with 10Gbase-LR standard.





10GE SFP+ Optical Modules

OMXD30000 OSX010000 OSX040N01
OSXD22N00 SFP-10G-BXD1 SFP-10G-BXU1
SFP-10G-ER-1310 SFP-10G-ER-SM1270-BIDI
SFP-10G-ER-SM1330-BIDI SFP-10G-LR-I SFP-10G-
USR SFP-10G



StarTech MSA Compliant SFP+ Transceiver Module

StarTech MSA Uncoded Compatible SFP+ Module - 10GBASE-LRM - 10GbE Multi Mode Fiber (MMF) Optic Transceiver - 10GE Gigabit Ethernet SFP+ - LC 200m - 1310nm - DDM (SFP10GBLRMST)

HP

Shop HP HPE SFP Module For Optical Network, Data Networking 1 x LC 1000Base LX Network Optical Fiber Single mode Black products at Best Buy. Find low everyday prices and buy online for delivery



8 Pluggable Modules for Interfaces

If an optical module is installed in a running device, you can run the display transceiver command to view parameters of the optical module, including the center wavelength, transmission distance, fiber



SFP Module 10G SFP Optical Transceiver GPON PON Fiber Copper

Key attributes Type SFP Module Use FTTX
Network Wireless Lan, 5G, Bluetooth, Wired LAN
Model Number SFP 1.25G Brand Name Unionfiber
Place of Origin Guangdong, China Warranty Time
3



SFP Transceiver Optical Fiber Single-Mode LC 1000Base-BX

1 SFP No. Fiber optic ports 1 LC Console port -
technical specifications Quality of Service (QoS) -
VLAN support - MAC Table Size - PoE 802.3af/at
support - No. PoE ports - dimensions Width 57
mm

Contact Us

For datasheets, pricing, or custom high-speed optical interconnect solutions,
please visit:
<https://www.syropy.com.pl>