

German Optical Cable Joint Box





German Optical Cable Joint Box



OPGW Joint Box , OPGW Splice Box , OPGW

OPGW splice box provides essential features such as protection, sealing, compatibility, durability, easy access, temperature resistance, and modularity to

Installation Method Of Optical Cable Joint Closure Splice

Installation Method Of Optical Cable Joint Closure Splice Box Fiber preparation 1. Remove the cable sheath, (if there is, please remove the shielding and armor)



Metal Joint Box for Cable Management

Metal Joint Box for Cable Management A Metal Joint Box is an indispensable device for connecting and protecting optical cables in a variety of applications. It is

Optical cable joint box

What is a fiber optic splice closure? What are the internal structures of the optical cable splice box? Optical cable splice box is a popular name, its scientific name is optical cable splicing



Dome Joint Box for Optic Fiber Cable

Dome Joint Box for Optic Fiber Cable Metal joint box bears the excellence of high mechanical strength, good airproof performance, outstanding corrosion



Horizontal Optical Cable Joint Box

The sturdy shell and main structural components of the optical cable joint box can withstand the harshest environmental changes, and at the same time play a role in flame retardancy and



Fiber optic junction box, Fiber optic terminal box

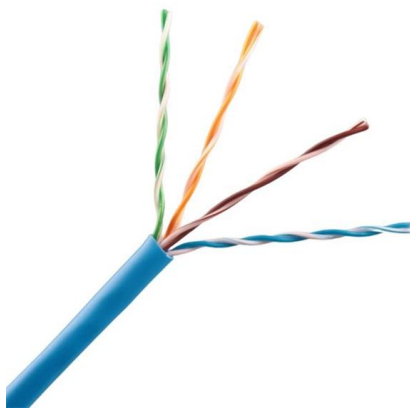
We offer various ranges of an optical joint closure from a small count to a super high count for under ground and aerial installation, and also offer an optical cabinet





How Do You Install an OPGW Cable Joint Box?

Learn the essential steps for installing an OPGW cable joint box, including preparation, mounting, fiber splicing, and sealing techniques, to ensure reliable



Fiber Optic Cable Splice Closure/JointBox/Joint Closure

1. Optical Fiber Splice Closure/Joint Box/Joint Closure is suitable for Aerial, Pipeline, Direct-buried; 2. CATV environment, Telecommunications, Customer premises environments, Carrier Networks, and

Joint box, enclosure, splicing box

Der optische Kabelanschlussteil, das ist, die optische Kabelverbindung, ist der Teil, der die Verbindung zwischen zwei oder mehr optischen Kabeln durch die Spleißhülle des optischen Kabels schützt, und

Waterproof and dustproof, reliable and safe

The outer classic sink design allows the sealing ring of the cabinet and door to be seamlessly compressed without leaving a trace of gaps



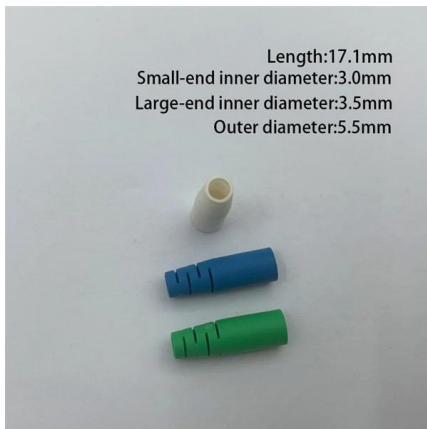
OPGW Joint box protects fiber optic cable joints

The OPGW joint box offers protection to the optic cable joints. The enclosure box is majorly used for aerial and strand-mount locations. It is the most popular OPGW joint box.



OPGW Optical Cable Metal Joint Box/Splice

Fibre optic metal joint box/joint closure/splice closure is used for the continuation of the optical cable in the middle of the tower, which has the advantages of high



OPGW JOINT BOX - Demka Electrical Suppliers

Joint boxes are specially designed to provide the maximum versatility for OPGW cable splicing, which enables their use in OPGW and other optical cable systems. The joint box is made of aluminium

Microsoft PowerPoint

Prysmian Part Numbers: - See page 3 EWMJ joint boxes are specially designed to provide the maximum versatility for OPGW cable splicing, which enables their use in OPGW and other optical



Product Code: 16 CASSETTES FIBER OPTIC CABLE JOINT BOX

Product Images The 2500402 fiber optic cable splice box can be used for direct, termination, or branch splicing of optical cables. The sealed box body provides waterproof protection without the need for



OPGW JOINT BOX - Demka Electrical Suppliers

An assembling plate prepared with fixing devices for the cable and for the splice trays is placed inside the box. Cable glands and a heavy wall heat shrinkable tube are used for sealing the entries of the



Fiber Optic Cable Joint Boxes

Types of Fiber Optic Cable Joint Boxes A fiber optic cable joint box (also known as a splice closure or termination enclosure) is an essential component in modern fiber optic networks. These enclosures

Joint Box

Joint boxes are used for protective connections and fiber distribution between two or more optical cables. ZTT has developed a diversified industrial model of telecom, power grid, renewable energy,



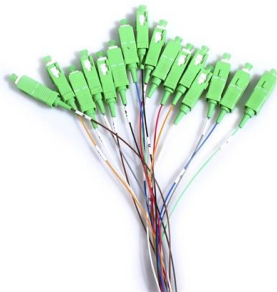
Fiber Optic Splice Closure 256 Core Joint Box SP-GJS-256

Product Description Fiber Optic Splice Closure 256 Core Joint Box model SP-GJS-256 It is a universal access junction box that allows the continuity and



Horizontal Fiber Cable Joint Box

Splitting and Wiring Fiber Cable Joint Box not only have the butt-joint and branching function, but also have the function of optical cable splitting and wiring, suitable



Dome Fiber Cable Joint Box Optical Splice Enclosure

Fiber Cable Joint Box is a continuous protection device for supplying optical, sealing and mechanical strength continuity between adjacent optical cables. The Fiber

Universal Metallic Joint Closure XOK (OP041-02) , Prysmian

The XOK universal joint closures are designed to provide water and pressure tight environmental protection for optical fibres and optical fibre splices regardless of the cable design.
Application



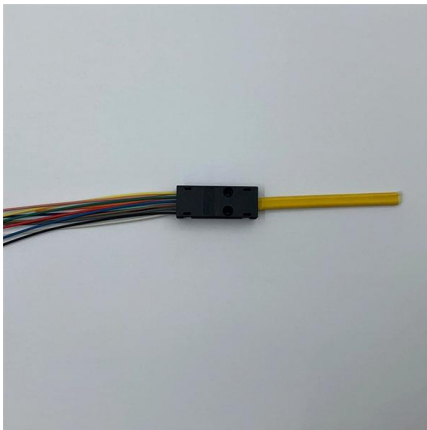
Optical Fiber Joint Closure Box for ADSS Cable

We are Fiber Splice Box manufacture and supplier, provide Optical Fiber Joint Closure Box for ADSS Cable on sale, factory price.



Metal Joint Junction Box, Splicing Box Manufacturer

ADSS/OPGW Metal Junction Box The ADSS/OPGW Metal Junction Box, also known as a splicing box or Metal joint Junction Box, is designed to house fiber core



Distributors: Splice Boxes & Optical Network Terminal

The splice box functions as a connection point between the fiber optic installation cable and pigtails. Within the splice cassette, the fiber optic cable is carefully

OPGW Joint Box , OPGW Splice Box , OPGW

OPGW Joint Box The aluminium alloy joint box are applicable for connection protection of special optical cables,with the functions of direct and branch



Opgw Fiber Optic Closure / Opgw Metal Joint Box with

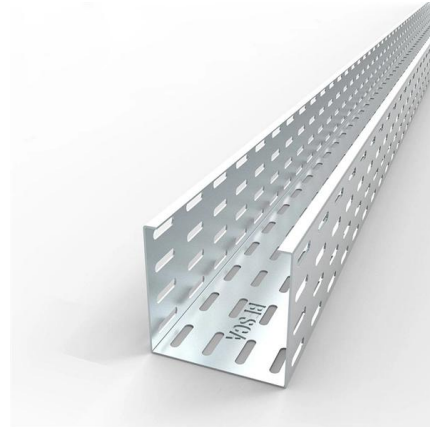
4. OPGW Joint Box Function and Purpose: The main function of the splice closure is fusion, protects and preformed of fiber. OPGW Joint Box Product Characteristics:





"Optical Cable Joint Box"

The Optical Cable Joint Box is a premium choice in the Fiber Optic Equipment category. Selecting factory-priced fiber optic equipment can significantly lower costs, allowing access to top-tier products



Contact Us

For datasheets, pricing, or custom high-speed optical interconnect solutions, please visit:
<https://www.syropy.com.pl>