

G652 Fiber Optic Transmission Distance





Overview

The standard specifies the geometrical, mechanical, and transmission attributes of a single-mode optical fibre as well as its cable. The fibre has zero-dispersion wavelength around 1310 nm as per how it was designed, however it can also be used in the 1550 nm wavelength region. Each fiber type is engineered with different refractive index profiles, dispersion properties, and bending performance to support specific applications—from long-distance.



G652 Fiber Optic Transmission Distance



G.652

The standard specifies the geometrical, mechanical, and transmission attributes of a single-mode optical fibre as well as its cable. The fibre has zero-dispersion wavelength around 1310 nm as per how it was designed, however it can also be used in the 1550 nm wavelength region.

Differences Between G.652, G.655, and G.657 Fiber Types

Each fiber type is engineered with different refractive index profiles, dispersion properties, and bending performance to support specific



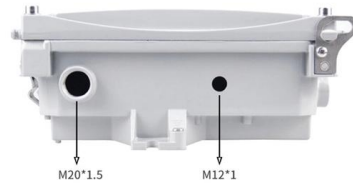
VIavi Reference Guide to Fiber Optic Testing Vol

Transmission Tests . 30



Fiber Optic Cables

Our Products 1. Single-Mode Fiber Optic Cables:
Our single mode fiber optic cables are designed for long-distance, high-speed data transmission. These cables are



In-Depth Analysis of Fiber Optic Price Fluctuations: New

In 2026, the global optical fiber market experienced a new round of price fluctuations, with some optical fiber products reaching near seven-year highs. This phenomenon is the result of

Understanding Optical Transmission Windows: A Complete Guide for

In fiber-optic communication, signal integrity and transmission distance are influenced by one core factor: wavelength. Optical transmission windows define the optimal frequency ranges



G.652 Fiber: Differences and Applications of Each

As the transmission rate increases, PMD becomes an important factor affecting the transmission distance. The relationship between PMD coefficient,



G652 Fiber

1.G.652.A supports 1Gbit/s system transmission distance up to 400km, 10Gbit/s Ethernet transmission distance up to 40km, and 40Gbit/s system distance up to



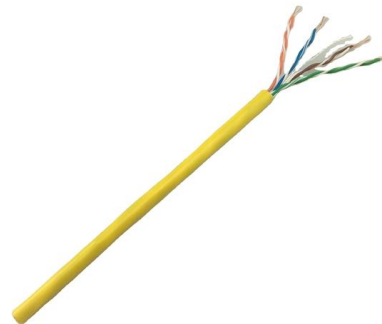
G.657.A2 Bend-Insensitive Single-Mode Optical Fiber

Explore G.657.A2 bend-insensitive single-mode optical fiber for FTTH, dense indoor routing, compact terminal boxes, and drone fiber or FPV tether systems. Learn key specs, bend performance,



25G BiDi SFP28 80KM Optical Transceiver , FiberMania

The FiberMania 25G BiDi SFP28 1270/1330nm transceiver delivers single-fiber bidirectional 25G Ethernet transmission up to 80km. Hot-pluggable with a single



Fiber Optic & Cable Standards Guide , FiberMania

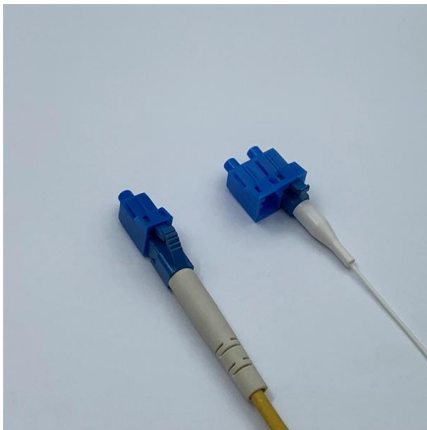
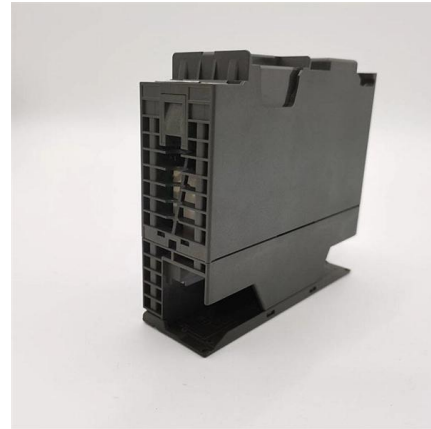
Fiber optic networks are built on well-defined standards that ensure quality, performance, and interoperability. This article explains eight of the most





How Far Can Fiber Optic Cable Run: Best Insights 2025

Fiber optic cables are excellent for long-distance data transmission. They carry information as light pulses through glass or plastic fibers, which results



4-Core Single mode Fiber Optic Cable

4-Core Single mode Fiber Optic Cable also called 4-core Optical fiber cable, is a type of communications optic cable which has the same transmission speed as

12 Core Single Mode Fiber Optic Cable

12-core single-mode fiber optic cables are widely deployed across industries that require high-speed, reliable, and long-distance data transmission. Key



Top 5 Fiber Optic Cables Types for 5G Network

OM5 Fiber for 5G Core Networks Service providers must also prioritize the fiber optic infrastructure within data centers, the repositories of



G.652 Single-Mode Fiber: Characteristics and Applications

G.652 fiber is suitable for optical communication at wavelengths of 1310 nm and 1550 nm, making it the preferred choice for long-distance optical



Quad Fiber Simplex Jumper: The Ultimate Guide to Reliable, High

A quad fiber simplex jumper provides reliable, high-performance, unidirectional connectivity with four independent fibers, ideal for dense network environments, ensuring signal integrity, scalability, and

G.652

G.652.A fiber supports a transmission distance of 400 km in 10 Gbit/s systems, 40 km in 10 Gbit/s Ethernet systems and 2 km in 40 Gbit/s systems.



Differences Between G.652, G.655, and G.657 Fiber Types

G.652, G.655, and G.657 are ITU-T standardized singlemode fiber types used across long-haul, metro, ODN, and FTTH networks. Each fiber type is



Recommendation ITU-T G.652 (08/2024)

This document outlines the specifications for a single-mode optical fiber and cable designed for use around the 1310 nm zero-dispersion wavelength, suitable for

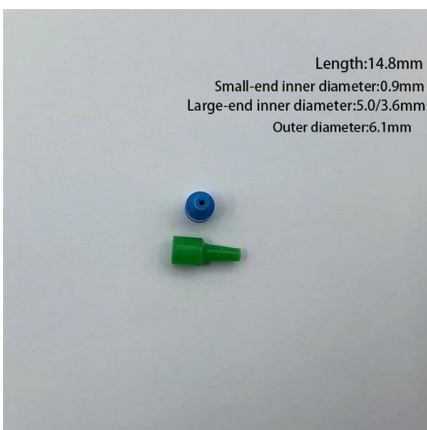


The Ultimate Fiber Optic Cable Size Reference Chart

Meanwhile, long-haul telecom networks prioritize low attenuation over extended distances. Specialized designs, like military-grade optics, add

High Quality opgw cable, fiber optic ground wire, opgw

UnitekFiber can provide you with high quality OPGW fiber optic cable with 24C singlemode G652D fiber overhead power transmission. Contact us for



ITU-T G.652: Single-Mode Optical Fiber Characteristics

ITU-T G.652 Recommendation details single-mode optical fiber and cable characteristics, including geometrical, mechanical, and transmission attributes.



The FOA Reference For Fiber Optics

Fiber Optic Network Design Jump To: The Communications System Cabling Design Choosing Transmission Equipment Planning The Route Choosing Components



Single Mode Fiber: OS1 vs OS2 Fiber

While both are single-mode fibers designed for long-distance, high-bandwidth transmission, understanding the key differences between OS1 and OS2

The ITU-T G.654.E fiber optic cable removes barriers to delivering

Their solution combines two existing fiber grades to provide a cable solution that enables longer transmission distances, higher data rates per wavelength, and reduced infrastructure



Motor protection controller



G.652.D vs G.657: Fiber Selection Guide for PON ODN

Learn the differences between G.652.D and G.657 fibers and how PON ODN environments affect fiber selection. A practical guide for GPON and FTTH deployment.



Characteristics of G.652 Optical Fiber

G.652.A fiber is used to support G.957 and G.691 with a maximum rate of STM-16 or 10Gbit/s and a maximum transmission distance of 40 km (Ethernet) and STM-256 for G.693



Contact Us

For datasheets, pricing, or custom high-speed optical interconnect solutions, please visit:
<https://www.syropy.com.pl>