

Functions of Distribution Box Components





Overview

These components support residential and commercial installations by managing the incoming supply, distributing power across branch circuits, and protecting the system from overloads, faults, and leakage. What is a Distribution Box?

A distribution box, or DB box, is a circuit breaker enclosure. The hub distributes electrical power from a single input source to various circuits throughout a building. Fuse links (or breakers): Interrupt excess current to protect wiring and equipment.



Functions of Distribution Box Components



Distribution Box: Key Functions, Components, and

Distribution boxes, also called distribution boards, are essential components in both residential and commercial electrical systems. Their main

Understanding Distribution Boxes: Your Guide to Power

Weatherproof Distribution Boxes These serve specific outdoor purposes, with rain, dust, and extreme temperatures sealed shut, protecting any



Distribution Boxes: Types and Functions

A distribution boxes acts as the load center and main distributor of electrical power within a building. Also called a distribution board, panel board,

Explore Power Distribution Box Types and Functions

In the distribution box, commonly known as the distribution board or breaker panel, you'll find several critical components responsible for managing



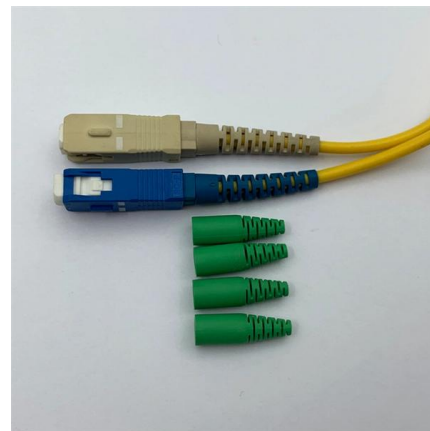
The Anatomy of a Distribution Box: Key Components

SHARE TO The Anatomy of a Distribution Box: Key Components Explained (MCB, RCD, Busbars)
A distribution box uses MCBs, RCDs, and



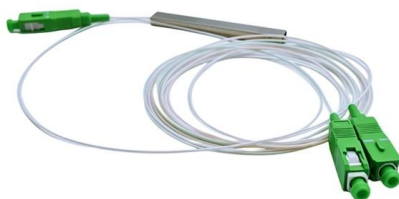
Power Distribution Boxes Explained Simply

Learn what a power distribution box is, how it works, key components, types, and why it's vital for safe and efficient electrical systems.



What is an Electrical Distribution Box? A

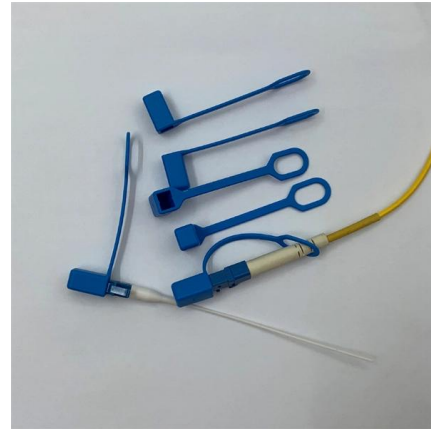
At its core, an electrical distribution box (or distribution board) is a metal or plastic enclosure that houses various components responsible for





Distribution Boards

Distribution boards, often referred to as electrical panels or breaker boxes, serve as the nerve center of any electrical system. Here we explore the crucial parts of a distribution board and gain insights into



What is a Distribution Box? - A Comprehensive Guide

A distribution box organizes and controls power flow, ensuring safety and efficiency in electrical systems.

Ultimate Guide To Distribution Boxes Db Boxes Types

This ultimate guide explains what a distribution box does, its internal components, common types, real-world applications, and how to select the right DB Box for



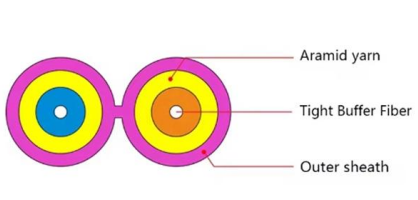
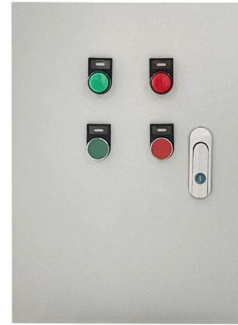
Distribution Box: Comprehensive Guide on Types, Safety & Technology

Explore the essential functions, types, safety features, and technological advances of distribution boxes for efficient electrical power distribution.



What Is Distribution Box (DB Box): Types, Functions,

You may be curious about them. They are distribution boxes (DB box), also known as distribution panels, which distribute electricity throughout a



What is the function of a distribution box?

Summary In essence, a Distribution Box is the nerve center for your electrical system. Its functions are to: Distribute power safely and efficiently. Protect against overloads and short circuits.

Comprehensive Understanding of Distribution Box

A distribution box helps manage electricity in homes or workplaces. It makes sure power flows safely and efficiently to devices. Let's look at its main jobs. Power distribution and circuit management The



What Is an Electrical Distribution Box? A Complete Guide

Centralizes circuit control A central function of electrical distribution boxes is the consolidation of circuit control, which enhances overall system



Understanding Distribution Boxes: A Comprehensive Guide

A distribution box, also known as a power distribution box or electrical distribution box, is used to distribute electrical power safely to multiple



Power Distribution Boxes Explained Simply

Key Components of a Power Distribution Box
Inside a power distribution box, several components work together to control, manage, and

About the Internal Structure and Basic Components of the Distribution Box

Electric power distribution box and distribution cabinet, distribution panel, distribution panel, etc., are complete sets of equipment for centralized installation of switches, meters and other equipment. The



Understanding Electrical Distribution Boxes: Components and Functions

This guide provides a comprehensive look into electrical distribution boxes, examining their key components, functions, and why correct selection and installation are critical for both

Distribution Boxes Explained: Types,



Functions, and

Learn about distribution boxes, their types, functions, and safety features to ensure efficient and secure electrical power distribution in any building.

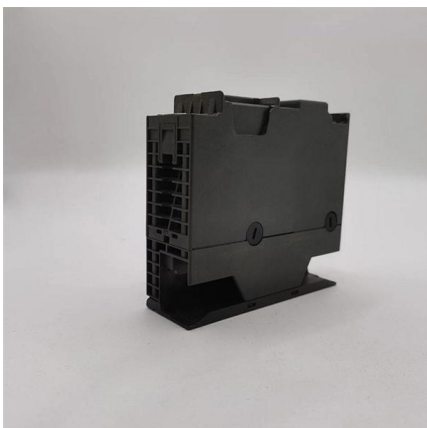


Complete Guide For Distribution Boxes Types

Distribution boxes consist of several key components, each serving a specific function in the overall system. Understanding these components is essential for

Distribution Box Guide: Types, Components & Solutions

Understand distribution boxes (DB boxes) in 5 minutes. Learn about types, components, functions, and uses. Find the perfect DB box for your needs.



Understanding the Function of a Distribution Box

Discover the essential role of a distribution box in electrical systems. This critical component helps manage and distribute electricity safely to various circuits, ensuring optimal performance and safety



Explore Power Distribution Box Types and Functions

Power distribution boxes are used in commercial and residential buildings and are part of the electrical system, also known as switchboards.



Understanding Distribution Boxes:A Comprehensive Guide

Understanding its significance, this article covers what a distribution box is, how it functions, its structure, the various types available, and how it

What is the Function of a Distribution Box in Electrical Systems

Understand the function of the distribution box in electrical systems and how it ensures safe and efficient power distribution.



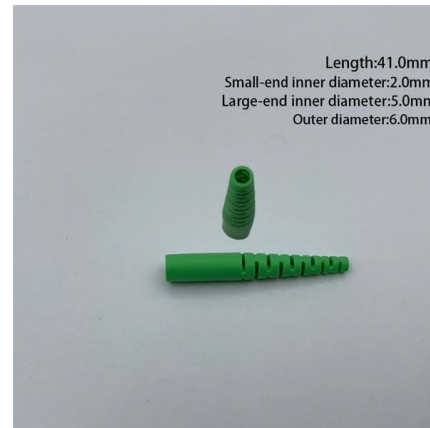
What is the Internal Structure of The Distribution Box

Learn about the internal structure of a distribution box, its components, functions, and key types. Understand its role in electrical systems



Understanding Electrical Distribution Boxes: Components and

This guide provides a comprehensive look into electrical distribution boxes, examining their key components, functions, and why correct selection and installation are critical for both



Contact Us

For datasheets, pricing, or custom high-speed optical interconnect solutions, please visit:
<https://www.syropy.com.pl>