

Function of 25G-2KM Optical Module





Function of 25G-2KM Optical Module



25G SFP28 DWDM 2KM Optical Transceiver , FIBERSTAMP

This product is a 25G SFP28 DWDM transceiver designed for optical communication compliant with 25G standard. Its high performance cooled DWDM EML transmitter and high sensitivity PIN receiver

An In-depth Guide to 25G SFP28 Optical Transceiver

Discover the advantages, specifications, and applications of 25G optical transceiver solutions--for high-speed data center, enterprise, and telecom networks.



Generic Compatible PX20+ EPON OLT 1.25G 1490/1310nm 20km

Generic Compatible C+++ 9dBm GPON OLT 2.5/1.25G 1490/1310nm 20km Simplex SC SMF DOM Optical Transceiver Module

Cisco Compatible 25GBASE-LR SFP28 1310nm 2km

The Cisco compatible SFP28 transceiver provides 25GBase-LR throughput up to



50KW modular power converter



Cisco Compatible 25GBASE-LR SFP28 1310nm 2km

Cisco Compatible 25GBASE-LR SFP28 Industrial Optical Transceiver Module for Data Center and Telecom (SMF, 1310nm, 2km, LC, DOM) The Cisco compatible

25G SFP28 Transceiver Modules: A Comprehensive Guide

25G SFP28 transceiver modules have emerged as a cornerstone of modern networking infrastructure. These compact, pluggable modules offer a cost-effective and versatile solution for



Huawei SFP-25G-SR Module SFP-25G-SR price and

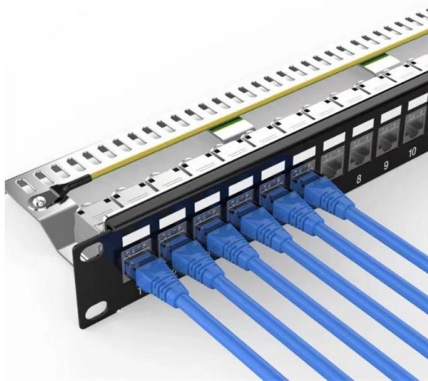
On the one hand, 25G network is complementary to 100G network, but the cost is much lower than that of 100G network. On the other hand, compared with 10G





Everything You Need to Know about 25G Optics

The 25G SFP28 optical module is an optical module with a transmission rate of 25Gbps. It is a new Ethernet standard with many



Generic Compatible 25GBASE-LR SFP28 1310nm 2km

Generic Compatible 25GBASE-LR SFP28 Industrial Optical Transceiver Module for Data Center and Telecom (SMF, 1310nm, 2km, LC, DOM) The Generic

25G SFP28 Optical Transceiver Modules , AscentOptics

25G SFP28 optical transceivers include 850nm, 100m over multimode fiber, and 10km, 20KM LR, 30km, 40km ER, and 80km ZR over single-mode fibers - AscentOptics.



AscentOptics 25G SFP28 LR Rx 10km Industrial Single-Receiver Optical Module



25G SFP28 LR Rx 10km Industrial Single-Receiver Optical Module

Description The Gigalight 25G SFP28 LR Rx 10km industrial single-receiver optical module (GSSR-SPO250-LRT) is designed for 25GBASE-LR Ethernet and CPRI/eCPRI Deep Packet Inspection

Huawei 02311KNR Datasheet



Huawei 02311KNR Datasheet Huawei SFP-25G-SR 25GBase-SR Optical Transceiver, SFP28, 25G, Multi-mode Module (850nm, 0.1km, LC)



25G DWDM Optical Modules Introduction

25G SFP28 DWDM optical modules are mainly used to meet the requirements of 25G Ethernet and 5G fronthaul services, and serve as an

Optical Transceivers , Fiber Optic Transceivers , Form

Optical Transceivers for High-Speed Connectivity
An optical transceiver is a compact device that combines the functions of both a transmitter



25G SFP28 IR 1310nm 2km Transceiver , AscentOptics

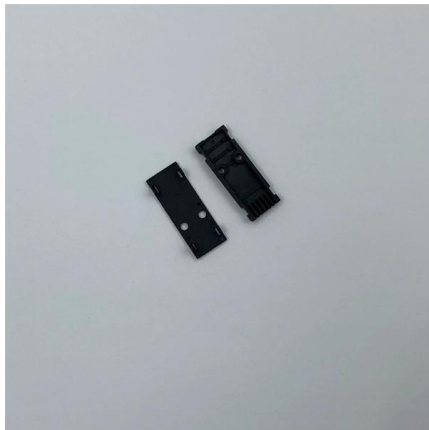
25G SFP28 IR module of AscentOptics is designed for use in 25G Ethernet and transmits and receives optical data over single-mode fiber for a link length of 2km.





A Comprehensive Guide to the 25GBASE-SR Optical

Compared to other 25G modules, such as 25GBASE-LR, which operates over longer distances, the 25GBASE-SR module is optimized for high



QSFP28 Module Types: SR4, LR4, CWDM4 & Single-Lambda

With a power consumption of just 3.5W, SR4 boasts the lowest power requirement among all QSFP28 optical module types and rarely requires dedicated thermal management. It

Generic Compatible 25G LRL SFP28 1310nm 2km DOM

Featuring an SFP+ 20-pin connector for hot-plug capability, the module offers digital diagnostic functions accessible via an I2C interface and integrates built-in clock



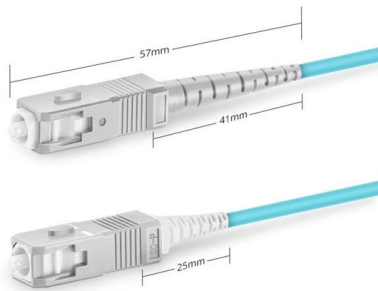
25G SFP28 Transceiver Module Types and Applications

25G BiDi SFP28 transceiver is different from the common 25G SFP28 transceiver. It uses one port to transmit and receive signals over a single strand fiber and must be used in pairs. It adopts two



25GBASE-ER SFP28 1310nm 40km Transceiver Datasheet , FS

Description FS's SFP28-25GER-31 is a very compact optical transceiver module converts 25Gbit/s serial CML electrical data into serial optical data compliant with the 25GBASE-ER standard. The SFP28



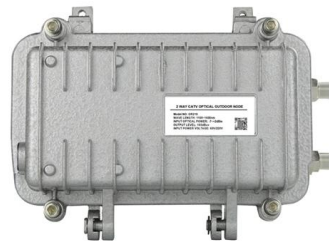
Simplex SC UPC

SFP28 25G SR Optical Modules: High-Performance Network Solution

Explore the benefits of SFP28 25G SR optical modules for fast, cost-effective connectivity in data centers, enterprise networks, and 5G. Upgrade your network with FS.

25G optical modules for your network

A practical guide to selecting and implementing 25G optical modules based on network needs and equipment compatibility.



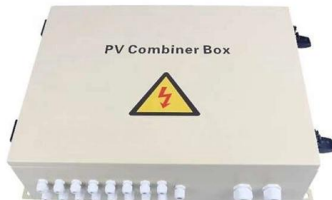
25G SFP28 IR 1310nm 2km Transceiver , AscentOptics

25G SFP28 25G SFP28 IR 1310nm 2km Transceivers Ascent Optics' SFP-25SM31-02C 25G SFP28 transceivers are high performance, cost effective modules supporting data rate of 25.78Gbps and



25G SFP28 DWDM EML 100GHz 2km/10km SMF LC Optical

FIBERSTAMP 25G SFP28 DWDM optical transceiver modules for 5G fronthaul are compliant with 25 Ethernet transmission protocols and compatible with 25G eCPRI transmission protocols.



Unlocking the Potential of 25G BIDI SFP28: An In-depth Guide to Optical

Modern telecommunication networks utilize optical transceiver modules that allow information to be transmitted over optical fiber cables at high rates. Different types of transceiver

25GBASE-LR SFP28 Optical Transceiver GSS-SPO250-LRCC

Reads from this address provide diagnostic information about the module's present operating conditions. The transceiver generates this diagnostic data by digitization of internal analog signals.

Focus creates quality products



Contact Us

For datasheets, pricing, or custom high-speed optical interconnect solutions, please visit:
<https://www.syropy.com.pl>