



Syropy AI Connectivity

Four Key Elements of Wavelength Division Multiplexing Technology





Overview

WDM systems are divided into three different wavelength patterns: normal (WDM), coarse (CWDM) and dense (DWDM). Coarse WDM provides up to 16 channels across multiple transmission windows of silica fibers.



Four Key Elements of Wavelength Division Multiplexing Technology

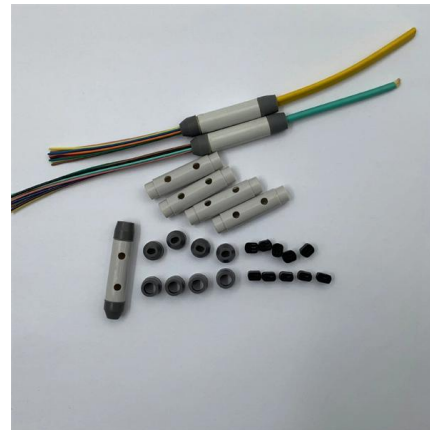


Wavelength Division Multiplexing

Wavelength Division Multiplexing (WDM) is defined as a multiplexing technology used in fiber-optic transmission to maximize transmitted bit rates, enabling long-haul data, video, and voice

What is Wavelength Division Multiplexing (WDM): A

Introduction to Wavelength Division Multiplexing (WDM) Wavelength Division Multiplexing (WDM) is a fiber optic transmission technique that combines

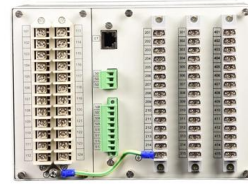


Wavelength Division Multiplexing (WDM)

As later chapters discuss, active WDM components include optical amplifiers, wavelength switches, and optical wavelength converters. Figure 10.1 shows the implementation of passive and active

Wavelength Division Multiplexing: A Guide to Fiber Optic

Wavelength Division Multiplexing (WDM) enables multiple optical signals to travel through a single fiber by using different wavelengths of light. This optical



Types of Multiplexing in Data Communications

3. Wavelength Division Multiplexing Wavelength Division Multiplexing (WDM) is a multiplexing technology used to increase the capacity of optical fiber



Mastering Wavelength Division Multiplexing

Explore the fundamentals and advancements in Wavelength Division Multiplexing, a crucial technology in modern optical communications.



WDM (wavelength division multiplexing)

Wavelength Division Multiplexing (WDM) is a technology used in optical fiber communication systems to increase the capacity and efficiency of



Wavelength Division Multiplexing (WDM) , Springer Nature Link

Wavelength division multiplexing or WDM allows the combining of a number of independent information-carrying wavelengths onto the same fiber, because of the wide spectral

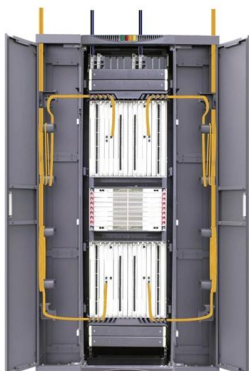


Essential DWDM System Components & Technologies

Overview of core DWDM system components and technologies for efficient optical transmission.

(PDF) Silicon photonic wavelength cross-connect with

Mode-division multiplexing (MDM) technology is one of the suitable approaches to increase data transmission capacity in photonic integrated circuits.



What is Wavelength Division Multiplexing (WDM): A

Wavelength Division Multiplexing (WDM) stands out as a cornerstone, enabling multiple data streams to travel simultaneously over a single fiber. This



Wavelength Division Multiplexing

Wavelength division multiplexing (WDM) is a technique of multiplexing multiple optical carrier signals through a single optical fiber channel by varying the



Wavelength Division Multiplexing: A Comprehensive Guide

Discover the comprehensive guide to Wavelength Division Multiplexing, its role in optical properties, and its significance in modern telecommunications.

WDM Basics: Understanding Wavelength Division

WDM (Wavelength Division Multiplexing) technology is an ideal solution to get more bandwidth and lower cost in nowadays telecommunications



WDM (wavelength division multiplexing)

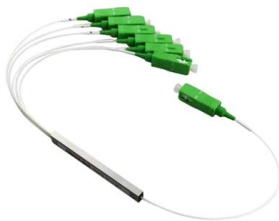
Wavelength Division Multiplexing (WDM) is a technology used in optical fiber communication systems





Wavelength Division Multiplexing: A Comprehensive Guide

Principles and Fundamentals of WDM
Wavelength Division Multiplexing (WDM) is a technology that enables multiple optical signals to be transmitted over a single fiber optic cable,



What Is an SFP Module? -- Complete Guide to SFP, SFP+ & SFP28

(2) CWDM and DWDM SFP Modules
CWDM (Coarse Wavelength Division Multiplexing): Uses wider wavelength spacing for moderate-density wavelength multiplexing. DWDM (Dense Wavelength

Research on Optimization and Application of Wavelength Division

This paper discusses in detail the wavelength division multiplexing (WDM) technology, which effectively increases the communication capacity and transmission speed by simultaneously transmitting



Wavelength-division multiplexing

In fiber-optic communications, wavelength-division multiplexing (WDM) is a technology which multiplexes a number of optical carrier signals onto a single



What is WDM? - How wavelength division multiplexing

In its simplest form, a WDM system consists of four elements that work together to transmit multiple wavelengths over a single fiber: Transceivers are wavelength

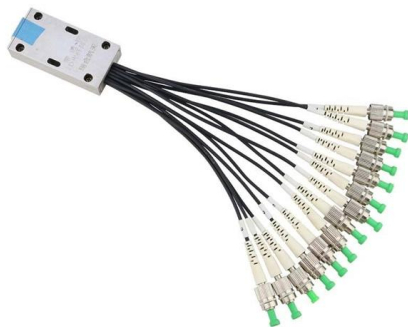


Multiplexing - Definition - Types of Multiplexing: FDM,

In wavelength division multiplexing, optical signals are transmitted through fiber optic cables. Wavelength division multiplexing is a technology in which multiple optical

Wavelength division multiplexing

Key topics include the principles of wavelength multiplexing and demultiplexing, the design and optimization of WDM systems, and innovative modulation techniques that enhance data transmission



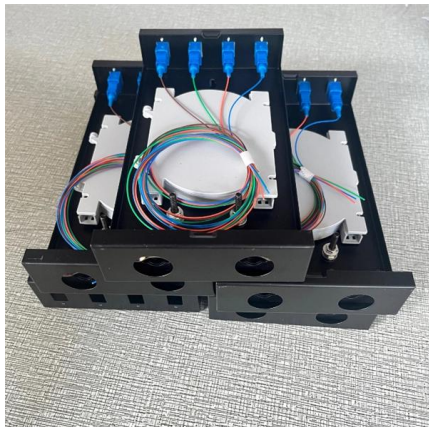
Wavelength Division Multiplexing , WDM Technology in

Learn why Wavelength division multiplexing (WDM) technology carries great potential to help network operators stay ahead of growing demands



Optically Multiplexed Systems: Wavelength Division Multiplexing

etwork-ing with advanced topologies supported with redundancy features. Historically, multiplexing had been used to share the limited bandwidth of the medium between different transmitters, but with



Wavelength Division Multiplexing

Wavelength division multiplexing (WDM) has enabled a revolution in communications technology. This article describes the technology, critical components of WDM systems, and transmission impairment

What is WDM? - How wavelength division multiplexing

Wavelength division multiplexing (WDM) multiplies fiber capacity with up to 80 channels on one fiber. Learn how the key components work together.



What is Wavelength Division Multiplexing (WDM)?

Wavelength Division Multiplexing (WDM) is a technique in optical communication that allows multiple data signals to be transmitted simultaneously

Wavelength Division Multiplexers (WDM)



Introduction to Wavelength Division Multiplexers (WDM) Wavelength Division Multiplexing (WDM) is a technology that has played a crucial role in the



Wavelength Division Multiplexing

Wavelength division multiplexing is a technology where multiple optical signals with different wavelengths are combined for transmission through a single optical fiber

Contact Us

For datasheets, pricing, or custom high-speed optical interconnect solutions, please visit:
<https://www.syropy.com.pl>