

# **Floor-mounted distribution box mounting bracket**





## Floor-mounted distribution box mounting bracket

---



### **RACO 18" Tall Floor-Mounted New Work Electrical Box**

The RACO 18" Tall Floor-Mounted New Work Electrical Box Support Bracket is constructed from stamped steel. It mounts to metal or wood plates.

### **Mounting brackets, raised floor box, metal**

Mounting brackets, raised floor box, metal For a freely adjustable positioning of the raised floor box in hollow floors of 250 mm and more.



### **DROP CEILING GRID SWITCH BOX MOUNTING**

Garvin Drop Ceiling Switch Box Bracket mounts directly to the T-Bar ceiling grid and allows standard switch boxes to be mounted fast and easy when you need a

### **Electrical box mount , Box mounting bracket , Box mount support , Eaton**

Not all electrical box supports are created equal. When it comes to rigid, easy to install electrical box supports, Eaton offers a wide variety of B-Lines series electrical boxes that help reduce



### Floor Mounts & Frameworks

Enhance your strut channel installations with our Floor Mounts & Frameworks, designed for secure, heavy-duty structural support in industrial, commercial, and



### Buy Electric Cable Duct Systems , AFB20BK , Above Floor Box

Weve got Above Floor Box 110Hx125Wx110Dmm Surface Mount Box Black at wholesale prices at Wholesale Electrical Supplies | Rexel Australia - Register Now!



### Floor Mount Box Bracket, 18" Height, Steel

Discover the 18" Kick Bracket (KB-18) from Orbit Industries, a game-changer in electrical box mounting. Tailored for 4", 4-11/16", and 5" sq. boxes, the floor





### Floor Mount Brackets , McMaster-Carr

Choose from our selection of floor mount brackets in a wide range of styles and sizes. Same and Next Day Delivery.



Cable structure



### Evolution Series EFB8 Floor Box Mounting Bracket

Holds up to four (4) devices for power, communications or audio/video. Bracket accepts standard size (2 3/4" x 4 1/2" (70mm x 114mm)) device plates

### Mounting accessories

Telequick System is an engineered mounting and cabling system developed to help you to save time and resources during the mounting process. The mounting components are the following:



### Floor Mounted Box/Conduit Supports

Floor Mount Box Bracket, 18 Inch Height, Steel With Zinc Finish, For Use With 4, 4-11/16, and 5 Inch Square Boxes

### Legrand AV , Understanding Floor Boxes: Applications and Installation



Explore the types, benefits, and installation processes of floor boxes to enhance power and AV connectivity in modern workspaces.



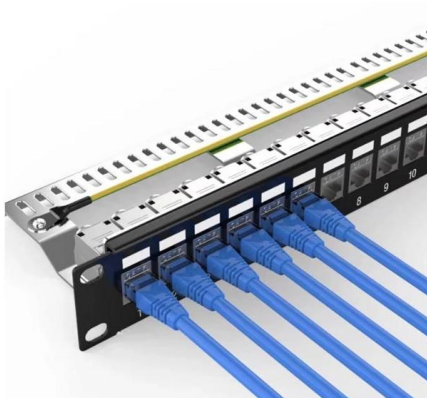
### Floor-standing cabinets

Cabinets are prepared for integration of meter panels, distribution panels, combination sets or the CombiLine-N modular distribution panel system. Flange



### Networking, ICT and Telecommunication Distributor , Scoop

Hier sollte eine Beschreibung angezeigt werden, diese Seite lässt dies jedoch nicht zu.



### 18 in. Tall Bracket, Floor Mounted Box Support

Designed for mounting square boxes 12" or 18" above floor. Mounts to metal or wood plate.

### Floor Mounted Box/Conduit Supports



Floor mounted box/conduit supports. Floor Support for 16" high box. Standard Packaging Quantity: 50.



**Electrical box mount , Box mounting bracket , Box mount support**

From floor-mount to wall-mount box supports, we offer a variety of options to mount just one or up to 5 boxes. Find out how to save on installation time.

**Electrical box mount , Box mounting bracket , Box mount support , Eaton**

From floor-mount to wall-mount box supports, we offer a variety of options to mount just one or up to 5 boxes. Find out how to save on installation time.



**Floor Box Design and Electrical Floor Outlet**

Floor boxes and electrical floor outlets Your one-stop shop for resources and information to design and build floor box specs for new constructions,



### Mounting Brackets , McMaster-Carr

Choose from our selection of mounting brackets, including brackets, structural framing, and more. Same and Next Day Delivery.



### Floor Distribution Box

Fibernet FTTH Floor distribution box designed to be install on each level of a multi-dwelling unit building for fiber to the home applications. It is the transition point between the riser cable and the horizontal



### Floor boxes and sockets , Legrand E-catalog International

Flush mounting boxes, junction boxes, DCL and floor boxes , Floor boxes and sockets , !



### Amazon : Electrical Box Mounting Bracket

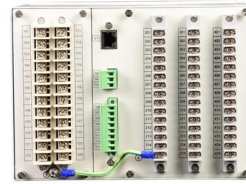
1-48 of over 3,000 results for "electrical box mounting bracket" Results Check each product page for other buying options.





## What is the Ideal Installation Height for a Distribution Box

Install a distribution box at 4.5 to 5.5 feet high for safety, accessibility, and compliance. This height ensures easy use and protection from hazards.

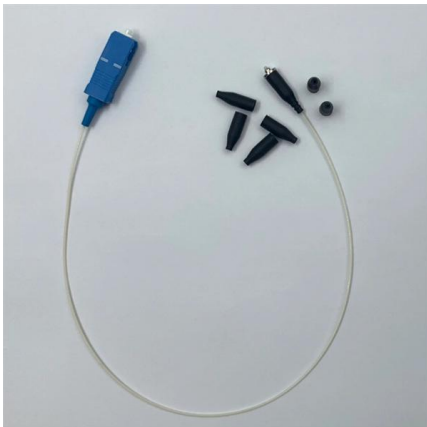


## RECESSED FLOOR DISTRIBUTION BOXES Electrical

Innovative, resistant and with technical features that facilitate assembly, AVE recessed floor distribution boxes represent an optimal solution to protect the

## Electrical Enclosure Mounting Brackets

Shop MISUMI for all your Electrical Enclosure Mounting Brackets and Enclosure Parts needs. MISUMI offers free CAD download, short lead times, competitive



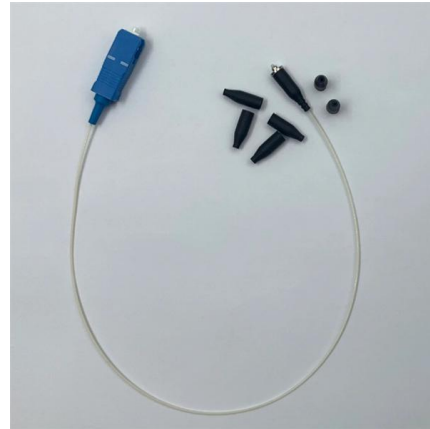
## Electrical Box Brackets , McMaster-Carr

Choose from our selection of electrical box brackets, including mounting adapters, mounting brackets, and more. Same and Next Day Delivery.



### Floor-mounted ODF

Floor-mounted Fiber Optic Distribution Frame Q-Fiber consists of the box and distribution board. The installation of a drawer (DS) makes it possible to extend the ODF to an extendable version.



## Contact Us

---

For datasheets, pricing, or custom high-speed optical interconnect solutions, please visit:

<https://www.syropy.com.pl>