

Flat copper strip in distribution box





Overview

The copper coil strip or sheet for distribution boxes is used to install the copper between the box and the wall. It consists of a single layer of copper with thick threads running through it, which is then covered in plastic covers to protect against damage. Copper strip is a malleable, thin sheet of pure copper or a copper alloy, meticulously rolled down to a precise thickness to provide a versatile and highly conductive material suitable for an array of industrial and technological applications. Metelec's copper busbars and copper flat bars are extruded at our parent company's production facilities.



Flat copper strip in distribution box



Copper Bus Bar, Copper Busbars for Control Panel & Switchgears, Copper

Copper Strips for Electrical In electric power distribution, Copper Strips is a pure copper strip or bar, typically housed inside switchgear, panel boards, and busway enclosures for local high current

Flat Copper Busbar and Strip

The flat copper busbar, also known as copper busbar or copper strip, is mainly used in electrical engineering due to its excellent conductivity, mechanical



50km/spool



Bare Copper/Aluminium strips/ Bare Copper Flats ,Vidya

Bare copper strips, also known as flat conductors, are rectangular or flat pieces of copper that are typically uncoated or uninsulated. They are designed to conduct

The Complete Guide to Distribution Box: Installation, Types & More

Busbars are metal strips or bars that distribute electrical power throughout the distribution box. They carry current from the main switch to individual circuit breakers, providing a reliable



Industrial Automation Wiring and Grounding Guidelines

Purpose This publication gives you general guidelines for installing an Allen-Bradley industrial automation system that may include programmable controllers, industrial computers, operator



Mexflow® Copper Strips for Electrical , Mehta Tubes Ltd

In electric power distribution, Copper Strips is a pure copper strip or bar, typically housed inside switchgear, panel boards, and busway enclosures for local high current power distribution.



Copper Strip

Manufacturer of Copper Strip - Earth Bus Bar Copper, Flexible Copper Strip, Flat Copper Strip and Flat Tinned Copper Strip offered by Veraizen Earthing Private



Hier sollte eine Beschreibung angezeigt werden, diese Seite lässt dies jedoch nicht zu.



FLAT COPPER BARS

Flat copper bars in stock by the specialist in the distribution of copper: Gindre Distribution



Copper Bus Bars/Copper Flat , Flexible Bus bars , Vidya

Copper Bus Bars and Flat Copper Conductors are electrical conductors used to collect and distribute electrical power in various industrial applications, such as



Step-by-Step Guide to Install MCB Distribution Box

Learn how to safely install an MCB distribution box with this comprehensive guide. Step-by-step instructions to ensure correct installation.





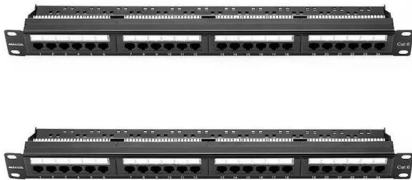
Copper Bus Bar, Copper Busbars for Control Panel & Switchgears,

In electric power distribution, Copper Flats is a pure copper flats or bar, typically housed inside switchgear, panel boards, and busway enclosures for local high current power distribution.



Copper Bus Bars , McMaster-Carr

Choose from our selection of copper bus bars, including over 650 products in a wide range of styles and sizes. Same and Next Day Delivery.



Copper Strips , Busbars & Conductive Uses

Copper Strips are flat, narrow, rolled copper products with superior conductivity and corrosion resistance. These strips are commonly used in electrical and thermal



What is Busbar? Types, Advantages (2026 Updated Guide)

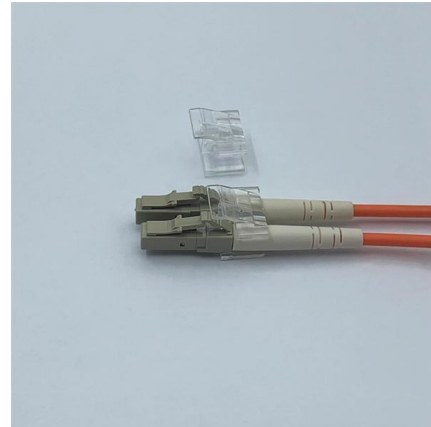
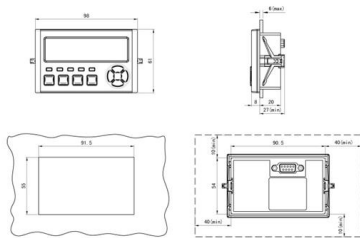
Busbar is a metal strip or rod, usually made of copper, brass or aluminum, used for grounding and conducting electricity. It is divided into flat





Copper Busbar: The Ultimate Guide to Applications,

Introduction In the world of electrical engineering and power distribution, copper busbars play a crucial role. These conductive bars, widely



Copper Terminal Blocks & Strips , Durable Connectors

Premium copper terminal blocks & strips by SMICO. Reliable electrical connectors for industrial use. Low resistance, high conductivity. Get a quote today!

Copper Strip Manufacturer in India, Flat /Trim/Bare Cu Strips Price

Copper Strip Manufacturer in India Since 1972, Buy Online Here 25x3mm or Custom Size Flat, Trim and Bare Copper Strips Roll for Electrical Work, Refer Price, Weight, and Sizes



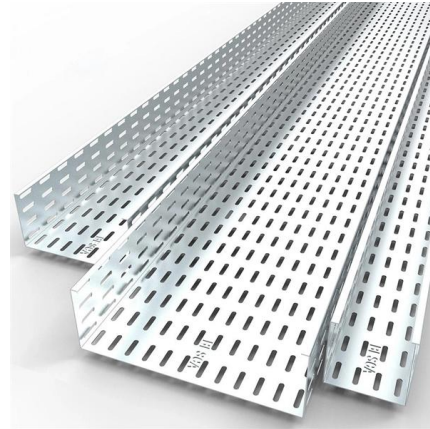
MESDUCT. HP-B

Epoxy Coated Copper Conductors Distribution busbar applications have a "tab" pressed into the conductor at the contact location points of the Tap Off Box Slot outlet. The Tab is formed by a high



Flat copper bar / rectangular bar

When you place your order, you can choose the form of supply that best

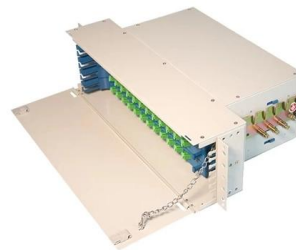


Copper Busbars and Copper Flat Bar

Metelec's copper busbars and copper flat bars are extruded at our parent company's production facilities. Our bars are firstly hot extruded into a rectangle which then

Grounding System Components

Physical Characteristics The most common ground conductor is a soft drawn, stranded copper conductor. Flat copper strip / tape is also popular because it offers a large surface area, resulting in



A Comprehensive Guide to the Different Types of

Explore the different types of electrical bus bars, including copper, aluminum, tinned copper, insulated, flat, flexible, and bus ducts.



Correct Connection Method Of Grounding Wire Of

Following the above steps and precautions can ensure the correct connection of the distribution box grounding wire, thereby ensuring the safe

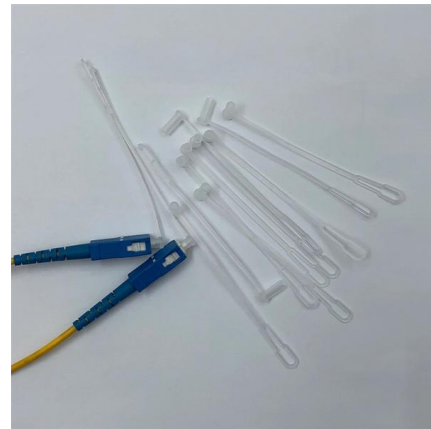


Copper Bus Bar

Manufacturer of Copper Bus Bar - Copper Strips for Electrical, Electrolytic Copper Flat, Copper Hollow Profile For Control Panel, Switchgear & Electrical and

Flat Copper Strips: The Comprehensive Guide

Flat copper strip is commonly used in power distribution systems, transformers, motors, and generators, as well as in various industrial and



Copper Coil Strip/Sheet For Distribution Box Copper

The copper coil strip or sheet for distribution boxes is used to install the copper between the box and the wall. It consists of a single layer of copper with thick



Contact Us

For datasheets, pricing, or custom high-speed optical interconnect solutions, please visit:

<https://www.syropy.com.pl>