

Flame-retardant cold aisle design for Italian data centers





Overview

This study proposes the container data center with the featured cold aisle containment (CAC) as effective thermal control strategy.



Flame-retardant cold aisle design for Italian data centers



Aisle Containment , Modular Cleanroom & Data Center Containment

Enhance airflow control and energy efficiency in data centers, laboratories, and cleanroom environments with Armstrong Aisle Containment Ceilings & Walls. Our modular systems

Cold Aisle Containment & Hot Aisle Containment

Executive Summary of Aisle Containment This article examines cold aisle containment and hot aisle containment (also known as cold or hot air containment) from a neutral perspective. Cross-Guard, as



APPLICATION PROFILE

Numerous designs of hot aisle / cold aisle technology are available in the market today and we can expect new and improved approaches will continue to be introduced.

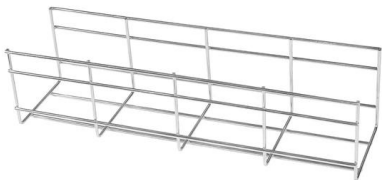
Data Center Aisle Containment

How data center aisle containment can be applied to meet the key objectives in effective data center design.



Data Center Aisle Containment , Polycarbonate & PVC

Request a custom quote today, and our knowledgeable specialists will help you design the perfect aisle containment system for your data center's specific cooling



Implementing Hot and Cold Air Containment in Existing Data Centers

Executive summary Containment solutions can eliminate hot spots and provide energy savings over traditional uncontained data center designs. The best containment solution for an existing facility will



Data Center Containment

Explore cut-to-size twinwall polycarbonate sheets for hot and cold aisle containment in data centers. Lightweight, impact-resistant, and flame-rated materials that



A DEEP DIVE INTO THE WORLD OF HOT & COLD AISLE

THE GREEN GRID: ASHRAE Data Center Cooling Guidelines: Developed in collaboration with ASHRAE, this document provides best practices for data center cooling, including hot and cold aisle



Aisle Containment Systems Physical Containment Systems

extension of the hot aisle/cold aisle concept of data center design. Hot aisle/cold aisle configuration is a best practice solution that separates hot and cold air streams. This method raises the temperature of

Impact of Hot and Cold Aisle Containment on Data Center

This paper examines both methodologies and highlights the reasons why hot-aisle containment emerges as the preferred best practice for new data centers.



Aisle Containment Systems Guide , AMCO

Basic Guide to Aisle Containment Systems for Data Centers Most electronic cabinet designs come with a standardized mounting of 19 inches. Today, many



Cold Aisle Containment in Data Centers

In today's technology-driven world, data centers are the backbone of global connectivity. With the explosive growth of computing power and storage



What To Know About Hot-Aisle, Cold-Aisle, And Chimney Data Center

Containment systems are used in modern data centers to isolate the hot discharge air from the cooler supply air, managing cooling by separating the airflow. This separation of hot and

Data Center Temperature: Hot And Cold Aisle Containment

Hot and cold aisle containment systems are crucial for data center temperature. Click to learn about airflow, cooling efficiency, and thermal



Analyzing the Cooling Behavior of Hot and Cold Aisle Containment in

Different types of air distribution schemes have different impacts on the energy efficiency of cooling systems. The analysis results of this paper demonstrate that sealing an appropriate aisle (hot aisle or

Impact of Hot and Cold Aisle Containment



on Data Center

The choice of hot-aisle containment over cold-aisle containment can save 43% in annual cooling system energy cost, corresponding to a 15% reduction in annualized PUE. This paper examines both



Cold Aisle Containment in Data Centers , Subzero

Cold aisle containment systems use doors at aisle ends, ceiling panels or lids above racks, and structural frames to create enclosed zones where cold supply air flows

IMPROVING DATA CENTER EFFICIENCY AND CAPACITY WITH AISLE

The fundamental difference between Hot Aisle Containment and Cold Aisle Containment is their respective abilities to increase efficiency and capacity in a particular type of data center.



Hot Cold Aisle Containment

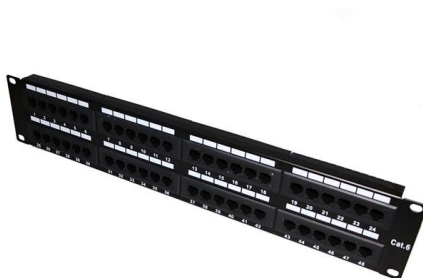
Aisle containment ceiling panels are required when a containment system cannot be suspended from a drop ceiling or a self supported containment option is required.

Data Centers and Aisle Containment ,



Plastics for Thermal

Optimize data centers with performance plastics for aisle containment, airflow management, and equipment protection. Lightweight, impact-resistant, and modular, plastics improve cooling, reduce



Hot Aisle Containment , Legrand

Hot aisle containment is the most common method for separating hot and cold air. By channeling hot exhaust away from equipment and toward cooling, data centers can maintain a stable operating

Guideline on the impact of high airflow and hot/cold aisle

Euralarm has published a new guidance document on the impact of high airflow and hot/cold aisle containment on gaseous fire extinguishing system



Explore hot and cold aisle containment for your data center

Hot and cold aisle containment can help you maintain the best air flow, temperature and humidity in the data center to keep servers running efficiently.



The cold aisle containment advantage

The ever increasing power requirements for new denser servers has created the need for supporting higher density compute platforms within traditional datacenters. HP partnered with Rittal Corporation



Aisle Containment Systems for Hot & Cold Aisle Solutions

Cool Shield Aisle containment solutions reduces server row temperatures in active data centers. Learn more about the benefits of hot and cold containment.

Optimizing Thermal Performance in Data Centers: A

Abstract Data centers are power- and cooling-intensive facilities where even minor inefficiencies can translate into significant energy and



Ordering information

Model	1	2	3	4	5	6
Model	SP2401	SP2402	SP2403	SP2404	SP2405	SP2406
Product name	Patch Panel	Patch Panel	Patch Panel	Patch Panel	Patch Panel	Patch Panel
Illustration						
Model	1	2	4	1	2	4
Maximum number of ports	144	288	576	144	288	576
Product size (including mounting hardware and shipping)	482.0*202.0*44.0 mm	482.0*202.0*88.0 mm	482.0*202.0*177.0 mm	482.0*202.0*44.0 mm	482.0*202.0*88.0 mm	482.0*202.0*177.0 mm
Standard color code	RAL9005	RAL9005	RAL9005	RAL9005	RAL9005	RAL9005
Inventory	2	2	2	2	2	2

Hot and Cold Aisle Containment in Data Centers

Data centers are often made up of hot and cold aisles, and the design of the hot / cold aisle data center is far from new. However, the traditional setup



Cold Aisle Containment: Complete Implementation Guide for Data Center

Complete cold aisle containment guide for data centers. Learn CAC benefits, implementation steps, and achieve 35% cooling cost reduction.



Hot and Cold Aisle Containment Systems: How They

Hot aisle containment (HAC) and cold aisle containment (CAC) are the most efficient ways of preventing your servers from overheating and these

Contact Us

For datasheets, pricing, or custom high-speed optical interconnect solutions, please visit:
<https://www.syropy.com.pl>