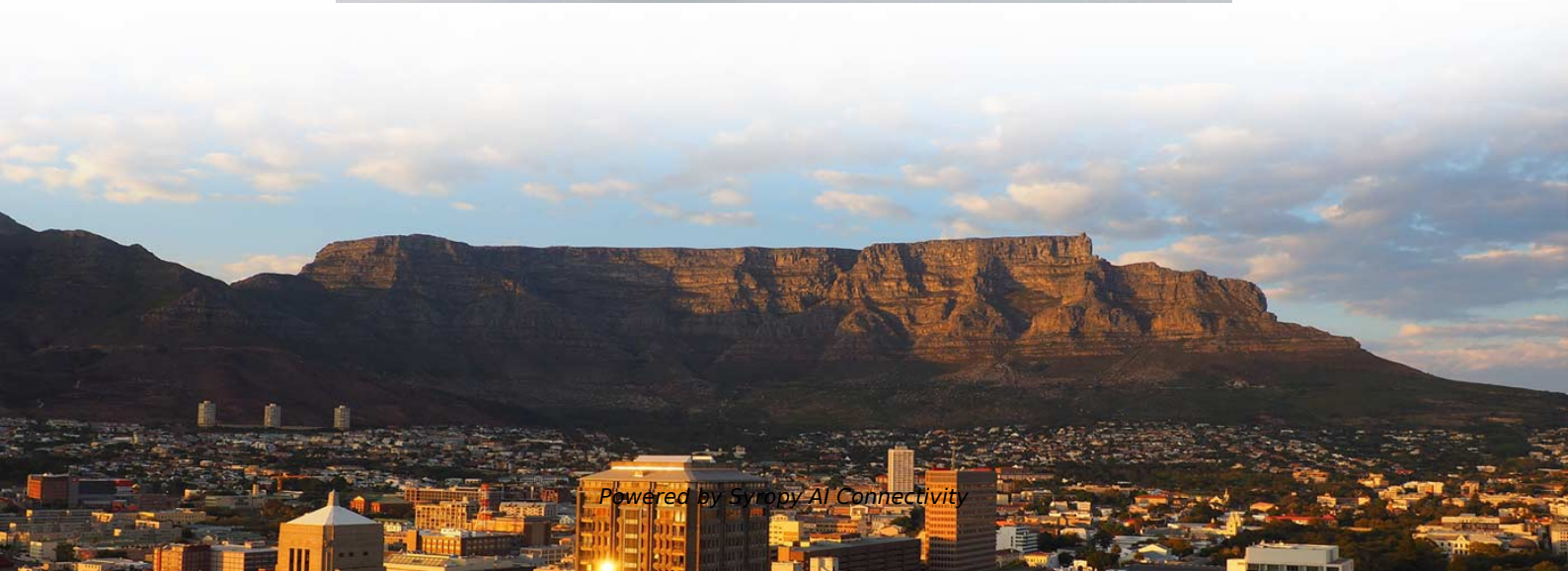


Fixing of ladder-type cable trays





Fixing of ladder-type cable trays

GUIDE CABLE TRAYS TECHNICAL

NEMA VE 1-2017 Specifies requirements for metal cable trays and associated fittings designed for use in accordance with the rules of Canadian Electrical Code, Part I and the National Electrical Code®



Cablofil 4x41x2mm Electro-Zinc Steel Cable Tray Mounting Rail 3m

Overview Cablofil 4x41x2 mm mounting rail provides structural support for cable support systems, enabling secure fixing of wire mesh trays, sheet metal trays and cable ladders. The U profile rail



Cablofil 4x21x2mm Electro-Zinc Steel Cable Tray Mounting Rail 3m

Overview Cablofil 4x21x2 mm mounting rail provides structural support for cable support systems, enabling secure fixing of wire mesh trays, sheet metal trays and cable ladders. The C-profile rail

Best practice guide to cable ladder and cable tray

Cable ladder and cable tray systems The following recommendations are intended to be a practical guide to ensure the safe and proper installation of



Ladder Trays , Cable Tray and Reels , Wire and Cable Management

Ladder Trays Ladder 3D Drawings Explore our full collection of Metallic Ladder 3D Drawings, including horizontal fittings, vertical fittings and metallic tray.



INSTALLATION GUIDE

Cable or "P" clamps and plastic tie wraps are used to fasten cables/conductors to the ladder tray. Single conductors must be fastened to prevent excessive movement generated by fault current magnetic



Cablofil COTJGS Pre-Galvanised Steel Cable Tray Divider Connector

Pre-galvanised steel divider connector for mounting separation plates to cable trays. Designed specifically for cable trays and uses screw fixing for stable, vibration-resistant installation in cable





Cable Tray and Reels , Wire and Cable Management

Fast installation with dependable support. Everything you need to build a cable management system, including Cablofil wire mesh cable tray, ladder cable tray, mesh cable tray, ladder cable tray,



Cable Trays , Cable Management Trays

These cable trays are designed to hold and support various types of cables, including power cables, data cables, and communication cables. Ladder Cable Tray: Ladder cable trays have a ladder-like

Beama Best Practice Guide , Installation Of The System , Cable

The following recommendations are intended to be a practical guide to ensure the safe and proper installation of cable ladder and cable tray systems and channel support and other support systems.



Cable Tray Trunking & Ladder Installation Method for

Resources For Electrical & Electronic Engineers Cable Tray Trunking & Ladder Installation Method for Projects The purpose of this article is to define the



Cable Tray Technical Guide A practical guide to product selection and

Cable tray is considered to be a system. It must provide continuous support for cables, and the electrical continuity of the cable tray system must be maintained.

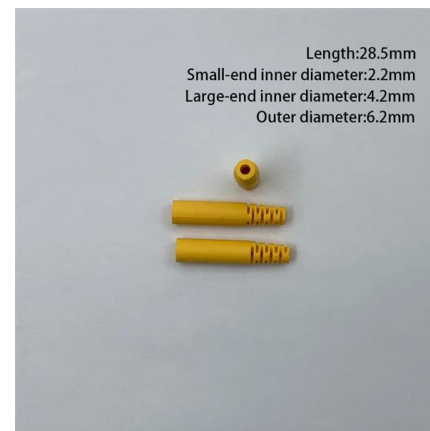


A Guide to Cable Tray Accessories and Their Functions

Selecting the right cable tray accessories is crucial for the safety, stability, and ease of maintenance of any electrical system. This article provides a

Important design considerations for cable ladder and

Consequently, only cables where mechanical protection is provided by a suitable sheath, for example, PVC sheathing or steel wire armouring, can be



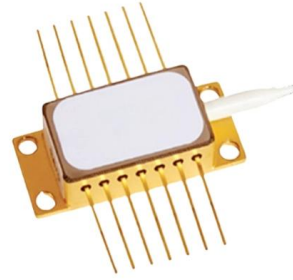
RZE cable ladder system

RZE cable ladder system We offer two distinctive types of cable ladders for shipbuilding, RZE-R and RZE-P. RZE-R is a cable ladder with a smart design



Method Statement installation of Cable Trays and Ladders

This method statement covers the site installation of the cable tray & ladders and the requirements of checks to be carried out.

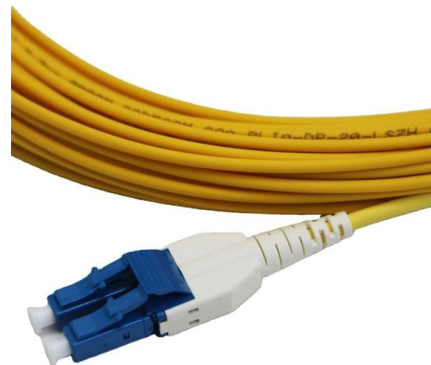


Cable Tray Installation Method Statement

Below is the detailed cable tray installation method statement not only for cable tray but also applicable for GI ladder and trunking for indoor and outdoor applications

GRP Cable Tray & Cable Ladders , EAE Electric

GRP Cable Ladder and GRP Cable Tray, particularly suitable for interior and exterior areas where resistance to corrosion is a requirement. GRP Cable Trays and



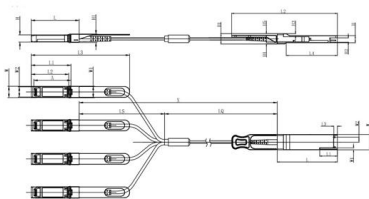
Best practice guide to cable ladder and cable tray

The following recommendations are intended to be a practical



Best Practice Guide to Cable Ladder and Cable Tray

Cable ladder and cable tray systems The following recommendations are intended to be a practical guide to ensure the safe and proper installation of



Unit mm

CSFP28	L	L1	L2	L3	L4	W	W1	W2	H	H1	H2	H3	H4	H5	H6
Max	72.2	-	118	4.35	61.4	18.45	-	6.2	8.6	12.4	5.35	2.5	1.6	2.0	-
Type	72.0	-	4.20	61.2	18.35	-	-	8.5	12.2	5.2	2.3	1.5	1.8	6.55	-
Min	68.8	16.5	124	4.05	61.0	18.25	2.2	5.8	8.4	12.0	5.05	2.1	1.3	1.6	-

SFP28	L	L1	L2	L3	W	W1	W2	H	H1	A
Max	57.6	47.7	44.55	119.9	13.8	14.0	12.3	8.7	10.3	45.25
Type	57.4	47.5	44.35	117.9	13.55	13.8	12.1	8.5	10.1	45
Min	57.2	47.3	44.15	115.9	13.3	13.6	11.9	8.4	9.9	44.65

How to Fix Common Cable Management Issues using

Discover common cable management problems and how cable tray accessories effectively solve them to ensure safety and performance.

Guide to cable support systems

Widths of 8 and 15 millimetres enable flexible adjustment to different cable trays, cable ladders and cable volumes. With the help of the matching SBV tightening strap locks and 576 spring chuck, the



Best Practice Guide to Cable Ladder and Cable Tray Systems

Cable ladder systems and cable tray systems are designed for use as supports for cables and not as enclosures giving full mechanical protection. They are not intended to be used as ladders, walk ways



Cable Tray , EAE Electric , Medium & heavy duty cable

E-Line A-A: Cable Support Systems and Accessories The Suspension-Accessory System E-Line AA; designed to carry busbars, cable trays, and cable ladders,



CABLE TRAY SYSTEMS GUIDE

Hubbell's NEXTFRAME® Ladder Tray is the effective and widely used cable runway that supports and delivers bundles of cable between cabinets, racks, and closets, along walls, and suspended from

Contact Us

For datasheets, pricing, or custom high-speed optical interconnect solutions, please visit:
<https://www.syropy.com.pl>