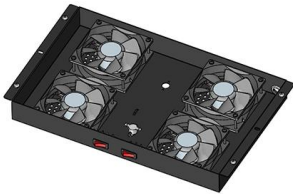


Fireproof sealing of cable trays with fireproof putty





Fireproof sealing of cable trays with fireproof putty

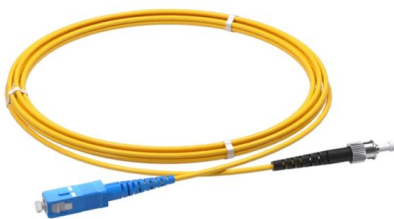


Fire Penetration

FirePro® SpeedSeal provides a tested solution for small apertures where cables and conduits pass through these fire rated divisions, and is available red putty-based penetration sealing solution

Cable Tray Penetrations: Problem Solved!

Maintaining them will be expensive and time consuming. In many areas on the west coast, there are seismic considerations when a cable tray is passed through a fire wall. If a cable tray is rigidly routed



Firestopping cable openings helps safeguard buildings

Sealing or firestopping openings where cables penetrate fire-rated walls and floors is an important aspect of cable installation and maintenance. When fire erupts in a

Fire Protection of Cable Trays , Ceasefire PFP

For example, a cable tray may contain electrical cables powering essential services that are still required to operate under extreme fire conditions.



Fire sealing cable penetrations

Fire sealing cable penetrations that pass through fire walls is important to prevent the spread of fire and smoke. Find out how we can help.



0708d_PA_Cheat_L dd

Firestopping Cable Installations Don't introduce fire hazards when working on a new project. Ensuring your cable runs don't compromise established barriers is often your responsibility.



Cable transit frames and penetration sealing systems

Seal cable penetrations with our modular firestop solutions, designed to create water-, smoke- and gas-tight barriers in energy and industry projects both



Protection of Electrical Cables Against Fire

This product is applied as if it were a putty, filling the gap between the passage of the cable and the wall, in this way, the fire cannot continue its passage in the event of a fire. Protection of



Trunking and cable tray protection

Our range of trunking and cable tray protection products provide effective fire protection for pipes, cables and trunking within floors, walls and ceilings.

Fire stop section of the cable tray and cable management NEMA

3M Fire Barrier Moldable Putty+ is a one-part, halogen-free product designed to firestop electrical outlet boxes and a wide variety of through-penetrations including cable, conduit, insulated pipe and metal



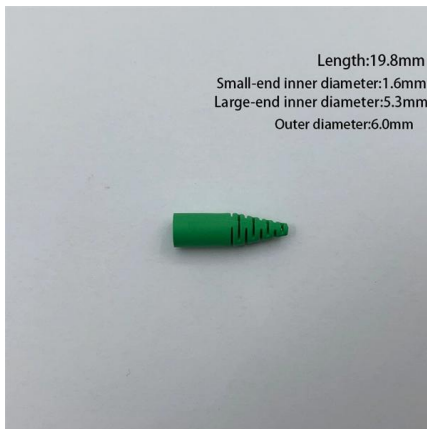
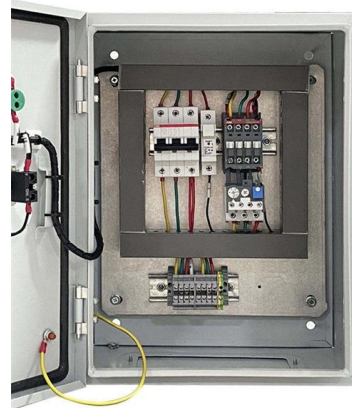
Fires Stop Barrier in India - JPSC Solutions Pvt Ltd

Installed between concrete opening and PVC pipe. Higher gaps to be filled with rockwool and sealant. Exposed to fire expands up to 20 times and fill the



Cable Tray Covering & Fire Protection

FireResistant Solutions provides cable tray covering and fire-protection systems designed to safeguard electrical and data infrastructure in commercial and multifamily buildings.



Step-by-Step Guide to Fire Sealing an Electrical Box with Putty Pads

Learn how to fire seal an electrical box effectively with putty pads in this step-by-step guide. Ensure maximum fire safety for your home or office with easy-to-follow instructions and expert

Fire Putty

Fire Putty is intended for fire sealing in fire class EI 60 to EI 120 of cables and metal pipes in wall structures. It is ideal for single penetrations where a simple and cost



Fire Rated Cable Coatings and Penetration Sealing

Fire Rated Cable Coatings and Penetration Sealing Protective Coating Systems are specialists in Fire Rated Cable Coatings & Penetration Sealing Firestop Mortar is





Firsto System , CSD Sealing Systems

FIRSTO firestops are designed to seal multi-cable and cable tray penetrations of fire-rated walls and floors. FIRSTO fire stops are developed as a modular system

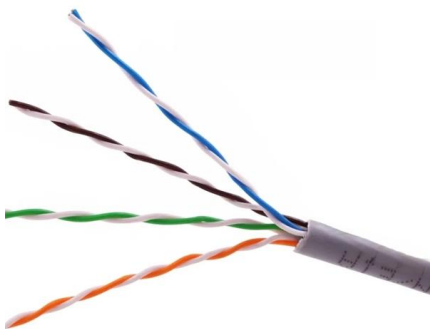


Fire protection for cables & cable trays , Flamro

Fire protection solutions to protect cables, cable trays and cable systems. Discover our tested cable coatings and fire protection bandages!

Fire Barrier Moldable Putty+

Insulated Cables/Moldable Putty Penetration Seal/Concrete Insulated Cables 1" Depth of 3M Fire Barrier Moldable Putty+ flush to the floor. Steel Sleeve (optional) Steel Sleeve (optional) Solid Concrete



Firebreak 55 Putty : Firebreak

Firebreak 55 Fire Resistant Non-Setting Putty is made from silicone based ablative polymer with additional fire resistant additives, and is designed to reinstate the



Firestopping cable openings helps safeguard buildings

Using approved firestop methods and materials, such as special caulk, putty, wrap strips or fire-barrier sheets, can reduce risks to structures and their occupants.



Firestopping Requirements for Cable Trays and

Where cables pass through shafts, walls, slabs, or enter electrical panels or cabinets, openings shall be tightly sealed with firestopping materials in



Trunking and Cable Tray Protection

Additionally, many modern trunking and cable tray systems are designed with built-in fire barriers or intumescent materials that expand when exposed to heat, creating



Why Your Building Needs Fire Stopping Around Cables

However, as cables may change in size with insulation burn-off, intumescent fire stopping materials must adapt and seal the gaps. The ability of

3M Fire Protection Products for the



Electrical Industry

3MTM Fire Barrier Moldable Putty Pad and Sticks
Firestops electrical outlet boxes, cable and
conduit Provides draft and cold smoke seal
Pliable and conformable

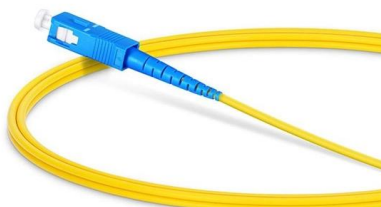
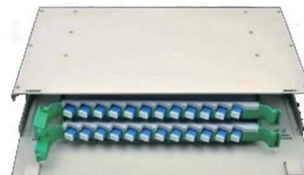


Firestopping Requirements for Cable Trays and

and
An electrical shaft shall have a threshold. Cable
trays and busways at floor level or at slab
penetrations shall have a waterstop no less than
50 mm in

Confidence even under fire.

3MTM Fire Barrier Pillows Can be used to seal
cables, cable trays and blank openings.
Afordable general-purpose sealant used with
cable and pipe penetrations.



Trunking & Cable Trays

A removable glass cloth coated pillow filled with
fireproof sponge and intumescent material which
expands to 3 times its original size in a fire,
stopping gaps in or



Technical Guidelines for Cable Tray Installation and

Periodically inspect outdoor trays for rust, moisture accumulation, or UV damage reproof trays require scheduled inspection for coating integrity and



Contact Us

For datasheets, pricing, or custom high-speed optical interconnect solutions, please visit:
<https://www.syropy.com.pl>