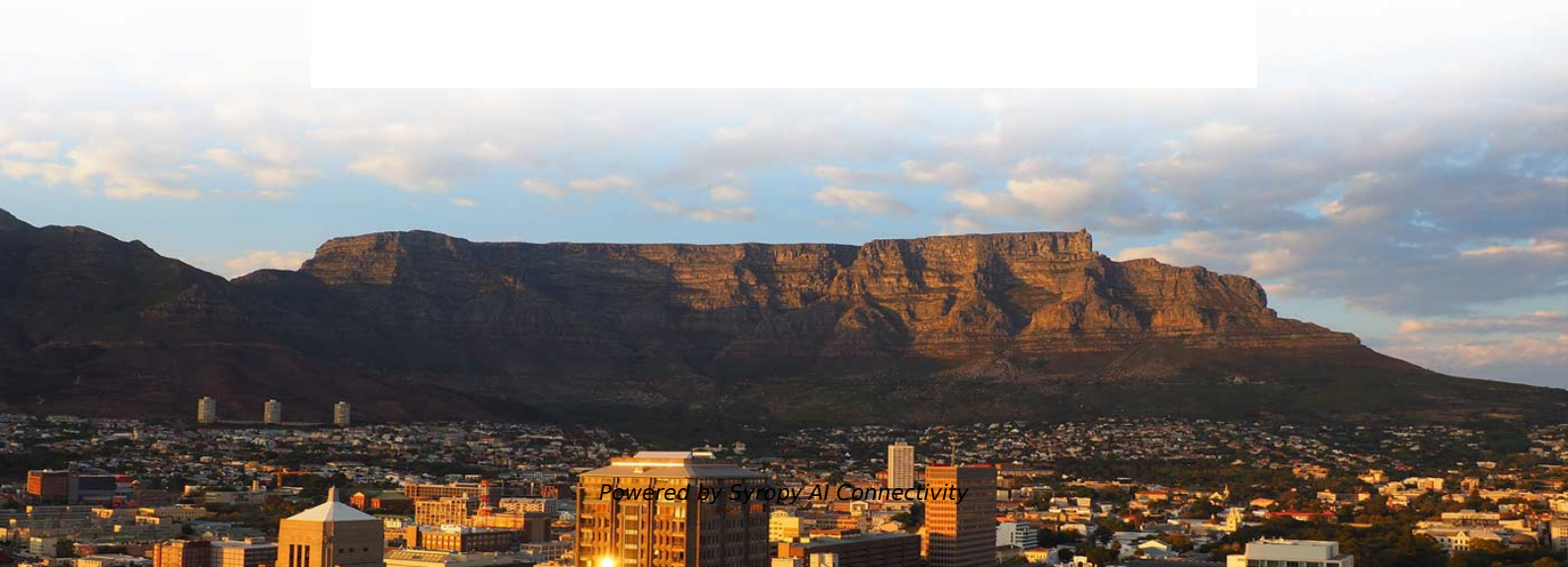


Fiji Aluminum Square Tube Explosion-proof Distribution Box





Overview

Types of explosion protection include Ex db, Ex eb with IP66 degree of protection. Enclosure Material: Aluminum, glass fiber reinforced polyester (GRP) and stainless steel. We offer bespoke, custom-made terminal boxes and terminal box combinations, as well as standard products with short delivery times. Supermec ATEX Junction Box & Enclosures are designed to satisfy most of our clients' requirements for CONTROL explosion-proof and flameproof enclosures. All explosion-proof enclosures, lighting or power distribution boxes are manufactured using the latest technologies, both mechanical and. Explosion-proof lights used in hazardous areas where combustible gases and dust exist, which can prevent arcs, sparks, and high temperatures that may occur inside the lamp from igniting combustible gases and dust in the surrounding environment, thus meeting explosion-proof requirements.



Fiji Aluminum Square Tube Explosion-proof Distribution Box

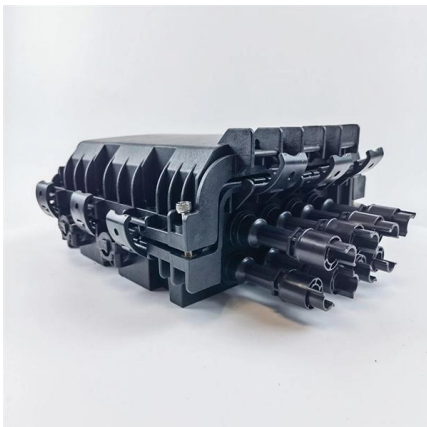


Explosionproof Outlet Boxes

Appleton(TM) GRH Conduit Outlet Boxes
Appleton(TM) GRJ Conduit Outlet Boxes
Appleton(TM) GRJS Universal Conduit Outlet Boxes
Appleton(TM) GRSS Conduit

Ex Enclosure Systems

They are completely pre-assembled explosion protection enclosures made of resistant plastic including ATEX and IECEx approval. The special feature of the



Distribution box solutions for explosion-proof environments in

Explosion-proof distribution boxes represent where regulatory wisdom meets engineering excellence. What appears as simple protective enclosures are actually sophisticated safety systems honed

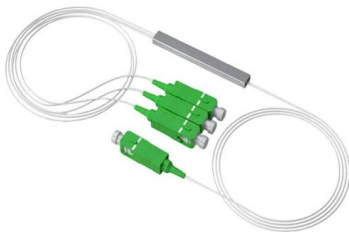
Ex d Junction Box Aluminium EJB-A , Supermec

EJB A series Ex d enclosures are normally used in the chemical and petrochemical plants, offshore platforms, refineries and any other industry where hazardous



Terminal Box/Explosion proof electrical equipment/global certification

They are certified according to the latest ATEX and IEC EX standards. Types of explosion protection include Ex db, Ex eb with IP66 degree of protection. Enclosure Material: Aluminum, glass fiber



Bjx Explosion Proof Junction Box

Bjx Explosion Proof Junction Box, Find Details and Price about Explosion Proof Empty Enclosures
Explosion Proof Illumination Distribution Box



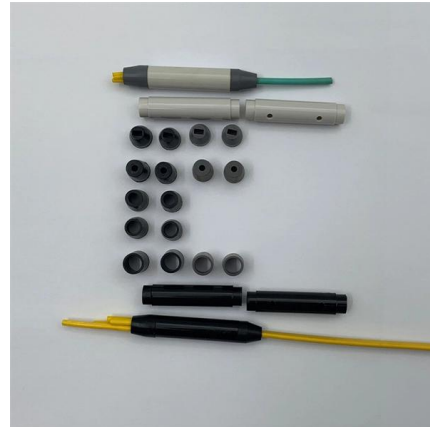
Ex Local Control Stations & Distribution Boxes

Atex control stations, explosion protected control units and distribution boxes made stainless steel maritime grade AISI 316L or AISI 304L. Atex Delvalle provides a



Explosion proof Enclosures and Distribution Boxes

For more information on our range of explosion proof enclosures and distribution boxes please click on the links above or contact us at ex@warom.ae



Explosion Proof Anti-Corrosion Junction Box Distribution Board

Explosion Proof Anti-Corrosion Junction Box Distribution Board Distribution Box No reviews yet Zhongshan Longju Technology Co., Ltd. Custom manufacturer 2 yrs CN

Distribution Box Panel Explosion Proof: Keamanan

Mencari panel box distribution explosion proof? pelajari spesifikasi Helon BM(D)X Series dan keunggulannya disini!



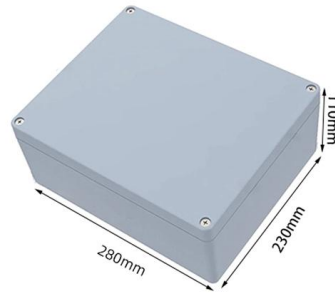
Explosion-proof distribution board_Explosion-proof Distribution Box

It is widely used in flammable and explosive gas environment such as oil exploitation, refining, chemical industry, offshore oil platform, oil tanker, etc. It is also used in flammable dust places such as military



Explosion proof Power Distribution Panel Box

Power Distribution panel box - Hazardous locations for explosive gas mixtures: Zone 1 and Zone 2. Explosive gas mixtures: Class IIA, IIB, and IIC.



Terminal and Junction Boxes (Ex d) , Explosion Protection

Constructed from corrosion-resistant, copper-free aluminum, the GUB series terminal boxes and junction boxes are available in a variety of sizes and configurations to suit different installation needs.

Explosion Proof Distribution Box & Electrical Enclosures

Durable Hexlon Explosion Proof Distribution Boxes and Electrical Enclosures, IECEx and ATEX certified for Zone 1 and Zone 2.



BM (D)X-Series Explosion Protected Distribution Box

BM (D)X-Series Explosion Protected Distribution Box Explosion protection -IECEX (IEC) -ATEX (CENELEC,EN) -China Ex (GB) Application in hazardous area



Custom explosion-proof distribution box for mines

Custom Explosion-Proof Distribution Boxes for MinesMulan Group delivers rugged, ATEX-certified electrical enclosures custom-built for mining operations.

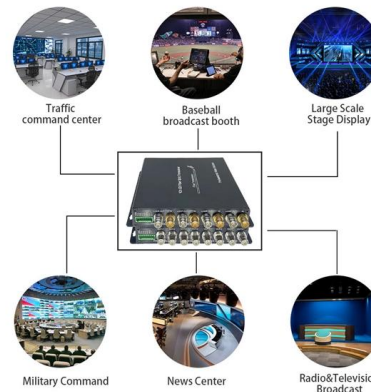


Explosion Proof Enclosure Comprehensive Guide

Explosion-Proof Distribution box: These smaller components are structurally similar to distribution cabinets. You can use these for the distribution

What is Explosion Proof Distribution Box?

Conclusion: Ensuring Safety with Explosion Proof Distribution Boxes Explosion Proof Distribution Boxes are indispensable in ensuring safety and operational continuity



Explosion-proof distribution board_Explosion-proof Distribution Box

5. Two or multi-circuits entry can be converted, by hand or automatically; 6. According to the electric scheme and main technical parameters offered by user, select explosion-proof electrical equipments



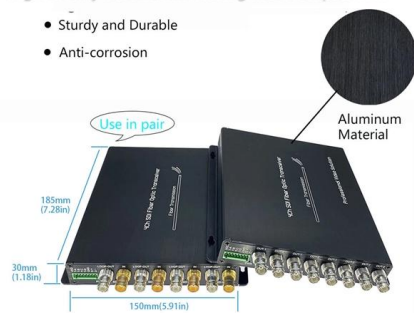
Explosion-Proof Lights, Explosion-Proof Junction Box,

An explosion-proof conduit outlet box is used to securely enclose and protect electrical connections in hazardous areas, ensuring that any sparks or flames do



High Quality Aluminum Housing with Compact Size

- Sturdy and Durable
- Anti-corrosion

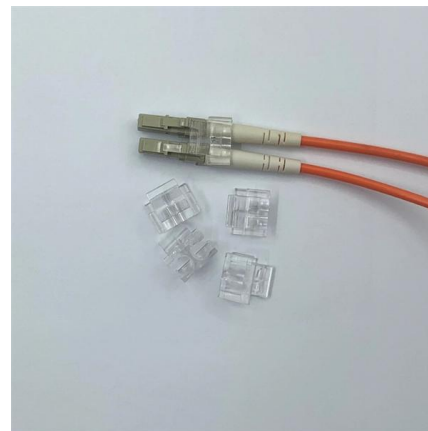


Aluminum Alloy Explosion Proof Distribution Boxes

Get Aluminum Alloy Explosion Proof Distribution Boxes at best price in Kochi, Kerala by Chinson Material Supply (OpC) Private Limited and more

Ex-Proof & Flameproof Enclosures & Junction Box , Supermec

Supermec ATEX-approved Junction Box & Explosion Proof, Flameproof Enclosures are designed to satisfy your requirements. Manufactured using the latest technologies.



8-Port PLC Fiber Splitter Box

12-Port SC Fiber Splitter Box

Size: 235*215*75mm
Material: ABS, IP65,



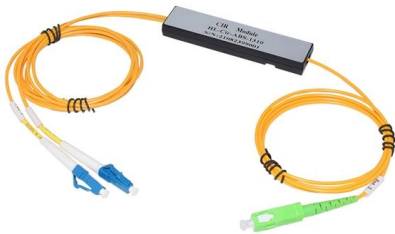
Junction Box Aluminium (Ex d) EJB-A

EJB A series Ex d enclosures are normally used in the chemical and petrochemical plants, offshore platforms, refineries and any other industry where hazardous



HELON BJX Explosion Proof Terminal Box

HELON BJX Explosion Proof Terminal Box adalah solusi ideal untuk aplikasi kelistrikan di lingkungan berbahaya, dirancang khusus untuk melindungi sistem kelistrikan dari risiko ledakan dan kebakaran.



Atex Certified Junction Boxes, Terminals, Sockets

These explosion proof junction boxes / terminal boxes, plugs, sockets & connectors are for use in explosive atmospheres in compliance with the ATEX 94/9/EC

Contact Us

For datasheets, pricing, or custom high-speed optical interconnect solutions, please visit:
<https://www.syropy.com.pl>