

# Fibre Channel fa





## Overview

---

Fibre Channel (FC) is a high-speed data transfer protocol providing in-order, lossless delivery of raw block data. It handles high performance of disk storage for applications on many corporate networks. We are committed to helping member organizations promote and position Fibre Channel, and to providing a. The Fibre Channel Association has a complete list of the ANSI X3T11 Fibre Channel Standards and draft Standards You can find those via the FCA Fibre Channel Technology pages (click on Standards at the top of that page).



## Fibre Channel fa

---



### The Fibre Channel Roadmap

The Fibre Channel Roadmap The Fibre Channel Roadmap illustrates the physical layer of Fibre Channel. The roadmap shows the historic speeds and feeds of Fibre Channel and the future speeds

### Fibre Channel

Fibre Channel is commonly used in a variety of applications in computer storage, including: - Storage Area Networks (SANs): Fibre Channel is the primary technology used in SANs



### Fibre Channel

The Fibre Channel Industry Association (FCIA) is a non-profit international organization whose sole purpose is to be the independent technology and marketing voice of the Fibre Channel industry.

### Fibre Channel

The fact that Fibre Channel was built from the ground up, and with an intense focus on enterprise storage array connectivity, gives the technology a unique edge over other networking technologies in



### Fundamentals of Fibre Channel

Fibre Channel is a high-speed network technology used to connect server to data storage area network. It handles high performance of disk storage



### Fibre Channel Fundamentals

Abstract Fibre Channel, a new interconnect technology for high-performance computer peripherals and networks, has a number of advantages over similar technologies. Fibre Channel enables channel



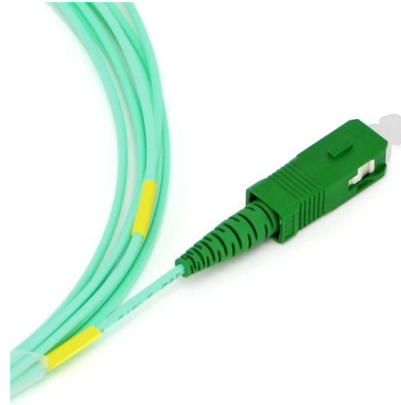
### What is Fibre Channel? SAN Networking Protocol Explained

Fibre Channel (FC) is a high-speed networking protocol primarily used for Storage Area Networks (SANs). It provides reliable, lossless data transport at speeds of 8, 16, 32, and 64 Gbps per port.



## Fibre channel, fiber channel, layers, ports, fc topologies

Fibre Channel Fibre channel, also written, fc is a technology that defines how data should be transmitted serially over copper and fiber optic media, fast and with low latency, from one node to another. Like

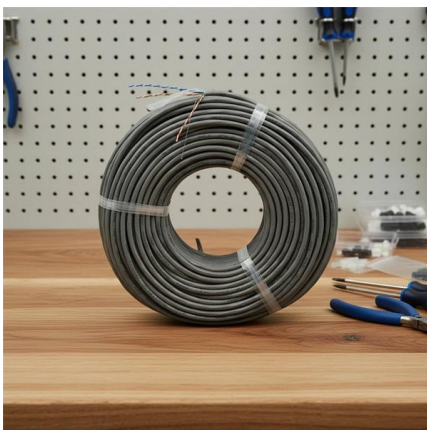


## Fibre Channel

Fibre Channel is a high-speed, reliable, and scalable networking technology designed specifically for storage area networks (SANs).

## Fiber Channel Network

8.2 Fibre Channel overview and basic structure  
Fibre Channel is based on a structured, standards-based architecture. This structured architecture provides specifications from the physical interface



## What Is Fibre Channel Network and How Does It Differ

What is Fibre Channel network? What can you benefit from it? This post will introduce Fiber Channel network including its main features and some



## Fibre Channel: The High-Speed Backbone of Your Data

Fibre Channel is a high-speed, lossless protocol for reliable data transfer between servers and storage in SANs and data centers.

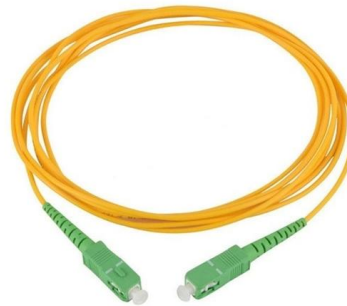


### Fibre Channel Layers

Fibre Channel is a high-speed data transfer protocol providing in-order, lossless delivery of raw block data. Fibre Channel is primarily used to

### The Fibre Channel Roadmap

The roadmap shows the historic speeds and feeds of Fibre Channel and the future speeds up to Terabit Fibre Channel (TFC). The map also shows how Fibre Channel is used in data centers to create



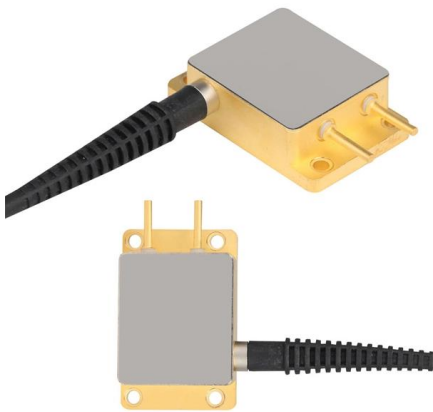
### Fibre Channel Functional Overview

Fibre Channel Functional Overview Prior chapters have so far been dedicated to the fundamentals of the SCSI protocol and have placed much emphasis on the layered approach to distributed



### What are Fibre Channel port types?

Learn about the various types of Fibre Channel ports on FC switches and routers and what each is used for in a Fibre Channel-based storage area



### Fibre Channel

INCITS/Fibre Channel serves as the parent committee of the INCITS/Fibre Channel Physical Variants and INCITS/Fibre Channel Interconnection Schemes Task Groups. Note: INCITS/Fibre Channel was

### Fibre Channel

The Fibre Channel Industry Association's roadmap has helped the industry see the future of Fibre Channel for over 15 years. Fibre Channel has always had a clear road ahead where the link speeds



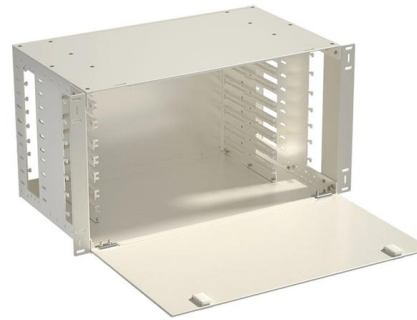
### Fibre Channel

Fibre Channel has had a very accurate roadmap for over a decade, showing the past, present and future of the Fibre Channel physical layer. Fibre Channel has been progressing since 1996 by doubling the



## Fibre Channel Features (An Industry Standard)

Dual Fibre Channel fabrics deliver built-in redundancy, so if one fabric encounters an issue, your host remains fully connected to storage, preventing downtime. Fibre Channel is engineered for fault

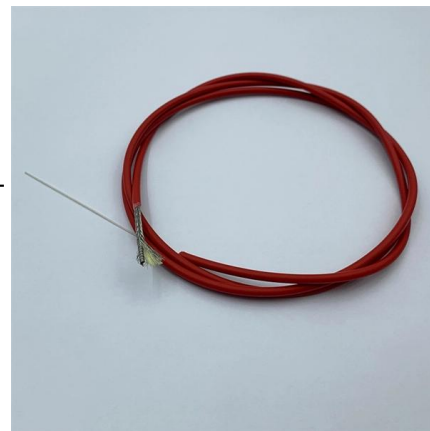


## Was ist Fibre Channel? Kurz und einfach erklärt

Fibre Channel (FC) ist ein hochleistungsfähiges Netzwerkprotokoll, das speziell für die verlustfreie, schnelle und zuverlässige Übertragung von Daten zwischen Servern und Speichersystemen in

## Enorme Flexibilität: Fibre Channel: Funktion und

Bei Storage Area Networks (SAN) gehört die Fibre-Channel-Technologie zur Standardausstattung. In Bezug auf Performance, lange Übertragungstrecken



## Fibre Channel Specifications

FCSI Fibre Channel profiles The Fibre Channel Systems Initiative (FCSI) was formed in February of 1993 by Hewlett Packard Corp, IBM Advanced Workstation and Systems, and Sun Microsystems



## Understanding Fibre Channel Protocol: A Backbone for High-Speed

Fibre Channel Protocol (FCP) is an integral component of modern storage area networks (SANs), ensuring the seamless and high-speed communication of data across vast networks. It provides an



## Fibre Channel Specifications

The Fibre Channel Association has a complete list of the FCSI Fibre Channel profiles. You can find those via the FCA Fibre Channel Technology pages (click on Standards at the top of that page).

## Fibre Channel 101 - Fibre Channel Industry Association

Fibre Channel (FC) is the storage networking protocol for enterprise data centers, with over 11 Million ports deployed. Fibre Channel is purpose-built and engineered to meet the demands



## Fibre Channel Overview

Fibre Channel attempts to combine the best of these two methods of communication into a new I/O interface that meets the needs of channel users and also network



## Fibre Channel Use Cases and Limits

Fibre Channel (FC) is a high-performance network technology primarily used for transmitting data between storage systems and servers in data centers. It



## Contact Us

---

For datasheets, pricing, or custom high-speed optical interconnect solutions, please visit:  
<https://www.syropy.com.pl>