

Fiber optic splitters have high losses





Overview

Understanding splitter ratios and insertion loss is fundamental to building a reliable fibre optic network. Excess loss is the ratio of the optical power launched at the input port of the splitter to the total optical power measured from all output ports. By dividing a single optical signal from a central Optical Line Terminal (OLT) into multiple outputs for Optical Network. Understanding the types of splitters, their impact on network performance, and how to measure their losses ensures high-quality network operation and facilitates optimal splitter selection based on.



Fiber optic splitters have high losses

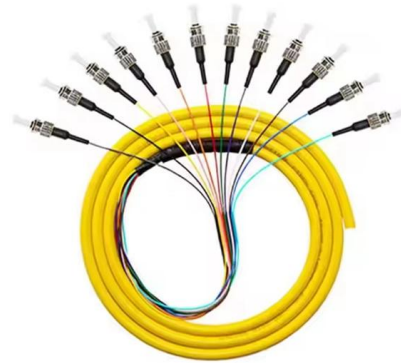
Understanding Signal Loss in PLC Splitters: A Comprehensive Analysis



When light travels through these splitters, some signal strength is inevitably lost. This loss, measured in decibels (dB), is a critical parameter that network designers must account for when

Understanding Optical Splitter Loss

Understanding Optical Splitter loss ratios and insertion loss is fundamental to building a reliable fibre optic network.



How to Test the Loss of Optical Splitter?

Optical splitters are vital components in fiber optic networks, distributing signals from a single input fiber to multiple output fibers. However, like

Understanding the Split Ratios and Splitting Level of Optical Splitters

Fiber optic splitters with higher split ratios can share the OLT optics and electronics costs as well as share feeder fiber costs and potential new install costs.



How to Calculate Splitter Loss in Optical Fiber

Understanding the types of splitters, their impact on network performance, and how to measure their losses ensures high-quality network



How to Calculate Splitter Loss in Optical Fiber

Case studies might explore how upgrades from standard fiber optic cables to micromodule fiber cables have reduced overall network losses in urban installations, showcasing the



Guidelines On What Loss To Expect When Testing

To be able to judge whether a fiber optic cable plant is good, one does a insertion loss test with a light source and power meter and compares that to an estimate of





Optical Splitters: Split Ratios, Splitting Architectures & PON Network

By dividing a single optical signal from a central Optical Line Terminal (OLT) into multiple outputs for Optical Network Terminals (ONTs) at users' homes, splitters eliminate the need for



Fiber Optic Splitter: How It Works & Types Guide

This guide demystifies fiber optic splitters, explaining their design, operating principles, types, key specifications, and real-world applications.



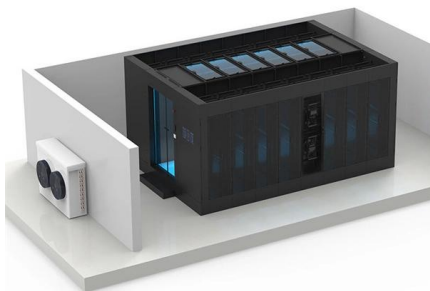
Why Fiber Optic Splitter Loss Table is Important

All in all, Insertion loss testing is very important to ensure compliance with the optical parameters of the manufactured splitter under the GR-1209-CORE specification.



Understanding Optical Splitter Loss

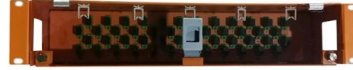
Understanding splitter ratios and insertion loss is fundamental to building a reliable fibre optic network. The key takeaway is that every split reduces optical power, and this loss must be





Optical Splitters in Modern Networks

Optical splitters play a critical role in modern fiber-optic networks by enabling efficient signal distribution. As they contain no electronics and do not



Why Fiber Optic Splitter Loss Table is Important

The optical fiber splitter is the component with the largest attenuation in a PON system. The optical insertion loss is the loss of an optical signal resulting from the

The FOA Reference For Fiber Optics

Testing a splitter or other passive fiber optic devices like switches is little different from testing a patchcord or cable plant using the two industry standard tests,

STAINLESS STEEL WIRE MESH

- Long-lasting and durable
- Comprehensive specifications
- Customized non-standard products



How to Calculate Splitter Loss in Optical Fiber

Calculating splitter loss in optical fibers is essential for designing efficient optical networks. Understanding the types of splitters, their impact on



Basic Knowledge about Split Ratio and Insertion Loss of

Optical splitters are vital in FTTH PON systems, distributing a single signal efficiently. Key parameters, Split Ratio and Insertion Loss, define their



How to Calculate Splitter Loss in Optical Fiber

FTTH projects must be designed so that the optical signal used is strong enough to reach the customer without severe degradation due to splitter loss. Likewise, enterprise network



Tutorial of Optical Splitter Loss Test

Optical splitters are usually used in passive optical networks (PONs) to distribute fiber to individual homes or businesses. There is something different



Ultimate Guide 2023: PLC Splitter / FBT Fiber Splitter

How to measure fiber optic splitter insertion loss with calculation? The maximum allowable insertion loss for an optical splitter used in a PON system



Understanding Signal Loss in PLC Splitters: A Comprehensive Analysis

Understanding Signal Loss in PLC Splitters: A Comprehensive Analysis Planar Lightwave Circuit (PLC) splitters are essential components in passive optical networks (PONs),

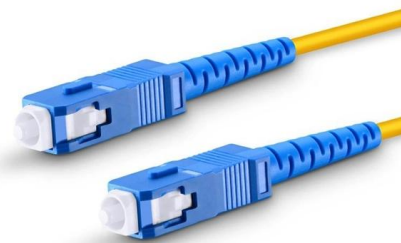


splitter loss in optical fiber on Strikingly

Minimizing splitter loss is critical for maintaining high-quality signal transmission in fiber optic networks. Excessive splitter loss can lead to degraded performance, particularly in PONs where optical signals

Fiber Splitters The Role And Application Guide

The working principle of fiber splitters is relatively simple, and the signal distribution is achieved through the principle of optical coupling in optical



What is splitter loss in optical fiber?

Optical fibers are the backbone of modern telecommunications, offering a high-capacity medium for data transmission over long distances with minimal loss.



What are the most common fiber optics problems?

Avoiding signal loss in fiber optics Fiber optic communication uses pulses of light to transmit data along thin strands of glass or plastic. Because the

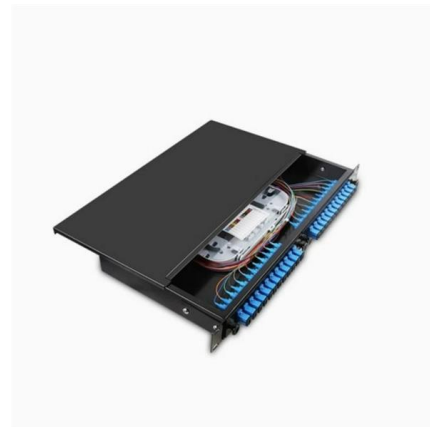


A Guide to Optical Splitters to Improve your Fiber Game! ,

Typically, optical splitters contribute the greatest loss in a FTTH network as operators use higher versions like 1:32, 1:64 or even 1:128. The greater the split the more

Basic Knowledge about Split Ratio and Insertion Loss of

In summary, understanding split ratio and insertion loss of optical splitter is vital for optimizing fiber optic networks. The split ratio dictates power



How to Calculate Splitter Loss in Optical Fiber

Direct effects of splitter loss on network performance and continuity are straightforward. If not properly accounted for, excess loss can cause low signal levels, significant errors, or even



Why Fiber Optic Splitter Loss Table Is So Important?

Do you know how to realize the performance of the FBT and PLC splitter? The primary important thing is to check its fiber optic splitter loss table.

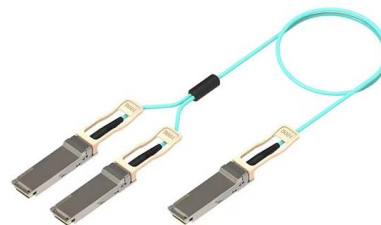


4 Important Technical Indicators of Fiber Optic Splitters

In this article, we will delve into four critical indicators: insertion loss, splitting ratio, isolation and stability. Help you make informed decisions when

Understanding Optical Loss in Fiber Networks

Optical fiber is a fantastic medium for propagating light signals, and it rarely needs amplification in contrast to copper cables. High-quality single mode fiber will often



Contact Us

For datasheets, pricing, or custom high-speed optical interconnect solutions, please visit:
<https://www.syropy.com.pl>