

Fiber optic flange joint loss





Overview

Misalignments such as core size mismatch, angular deviation, and parallel offset can lead to losses. Common connector types are named FC, SC and LC for single-mode applications and ST for multimode, but there are also dozens of other types, with special qualities such as duplex connections, particularly small. It describes losses from Fresnel reflection at the interface between fibers due to differences in refractive index. Even when the two jointed fiber ends are smooth and perpendicular to the fiber axes, and the two fiber axes are perfectly aligned, a small proportion of the light may be reflected back into the transmitting fiber causing attenuation at the joint. Mechanical splicing involves physically aligning and holding two fiber ends together using mechanical means.



Fiber optic flange joint loss

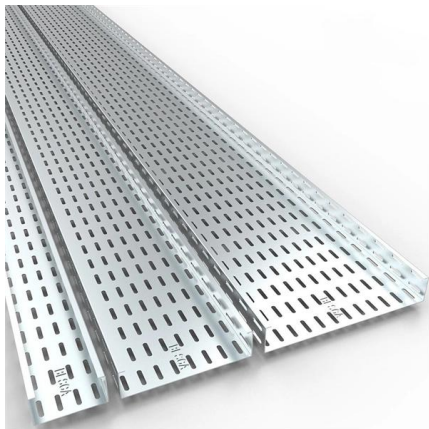


Fiber Joints

Fiber joints are the points where two optical fibers are permanently connected to create an uninterrupted transmission path. These connections are

Fiber alignment and joint loss

Unfortunately, Fresnel reflection is only one possible source of optical loss at a fiber joint. A potentially greater source of loss at a fiber-fiber connection is caused by misalignment of the two jointed fibers.



Fiber Couplers and Connectors

In any fiber optic communication system, in order to increase fiber length there is need to joint the length of fiber. The interconnection of fiber causes some loss of optical power.

Fiber alignment and joint loss , PPT

This document discusses optical losses associated with fiber optic joints. It describes losses from Fresnel reflection at the interface between fibers due to differences in refractive index.



Fiber Joints

Fiber joints are the points where two optical fibers are permanently connected to create an uninterrupted transmission path. These connections are essential in fiber optic networks, enabling



Fiber Optic Rotary Joints

Fiber Optic Rotary Joints (FORJs) are to optical signals what electrical slip rings are to electrical signals, a means to pass signals across rotating interfaces, particularly when transmitting large amounts of data.



Flange joint monitoring based on strain measurement with fiber optic

An algorithm to realize strain measurement by two types of sensors located on the same optic fiber is proposed. The results of experimental strain measurements demonstrate that fiber optic



Fiber alignment and joint loss

Fiber alignment and joint loss A major consideration with all types of fiber-fiber connection is the optical loss encountered at the interface. Even when the two jointed fiber ends are smooth and

可选配件



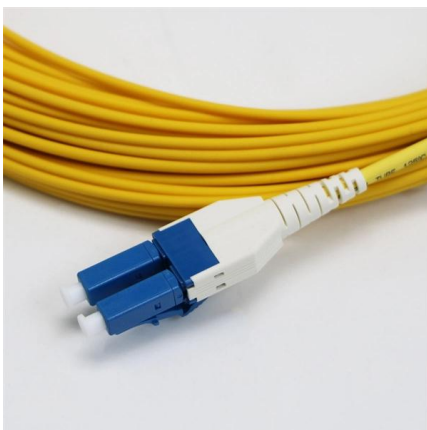
Tutorial Passive Fiber Optics, Part 6: Fiber Joints

A critical aspect of fiber optics is the joining of optical fibers, ensuring efficient light transfer from one fiber to another. This article delves into the various types of fiber



The FOA Reference For Fiber Optics

Optical fibers are very small, on the size of a human hair, and require careful alignment of the fibers to get low loss. The actual effects of misalignment are



TUTORIAL: Fiber Optic Rotary Joints

However, there can be a number of fiber connections and components between the converter pair, each gives rise to loses. Therefore, it is essential to



Fiber Optic Splicing: Examining the Factors that Affect

Learn the the intrinsic and extrinsic factors that can impact fiber optic splice performance and how you can create the best fiber optic network.



Optical Fiber Connectors, Splices, and Jointing Technology

Employing these fibers in lightwave systems requires precise jointing devices such as connectors and splices. Considering the small size of the fiber cores, less than 10 11m in diameter for single-mode



FIBER TO

Aim To measure the power loss at a splice between two multimode fibers, and study the variation of splice loss with transverse, longitudinal and angular offsets.



ITU-T Rec. L.12 (05/2000) Optical fibre joints

Summary Splices are critical points in the optical fibre network, as they strongly affect not only the quality of the links, but also their lifetime. In fact the splice shall ensure high quality and stability of





Microsoft Word

One of the most important requirements when designing an optical fiber link is to interconnect fibers in a low-loss manner.



Tutorial Passive Fiber Optics, Part 6: Fiber Joints

It is relatively easy to calculate coupling losses for single-mode fibers. Essentially, the guided mode from the first fiber (the input) creates some amplitude profile in

Optical fiber measuring joint loss

There are several measurement methods to determine the optical loss of an optical fiber splice, such as using an optical time domain reflectometer (OTDR) or a loss evaluation scheme for a



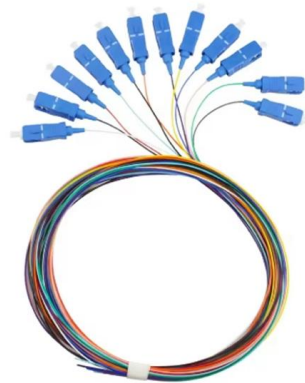
Optical Fiber Connectors, Splices, and Jointing Technology

Joints in fiber spans can sometimes cause reflections that result in the return of optical power along the input fiber (return loss). In laser systems, this reflected power can cause system degradation.



Optical fiber measuring joint loss

Optical fiber, short for optical fiber, is a fiber made of glass or plastic that acts as a light-transmitting tool. The transmission principle is 'total reflection of light'. The tiny fiber is encased in a



Optical Fiber Splice Loss and Methods to Reduce It

It is rather important to keep the minimum optical fiber splice loss when setting up an optical communication line. Here are 6 methods to reduce it.

Fiber Joints

Conclusion Efficient fiber optic connections are vital for reducing signal loss and ensuring reliable communication. Understanding the various techniques and



Lennie Lightwave's Guide To Fiber Optics

Lennie Lightwave's Guide To Fiber Optics Home Jargon Basics Fiber Cable Termination Networks Estimating Test Training Glossary Termination We

How to reduce the joint loss when the



single -mode optical fiber jump

When two single-mode optical fiber cables need to be connected, a fusion splicing process is often used. During this process, the two fiber ends are melted together, forming a joint.

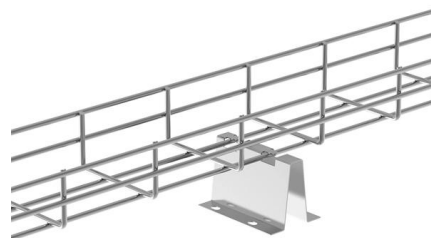


Optical fiber transmission loss

The transmission loss characteristics of optical fibers are one of the most important factors that determine the transmission distance, transmission

The FOA Reference For Fiber Optics

Connecting two optical fibers with connectors is not a simple task. Optical fibers are very small, on the size of a human hair, and require careful alignment of the fibers



F206 Fiber Optic Rotary Joint

The FO206 fiber optic rotary joint can be combined with our electrical and / or fluid slip rings, providing a single, compact package for optical signals, electrical power and fluid transfer. The FORJ can be



Fiber Optic Rotary Joint

Model 197S Focal Technologies Corporation, a Moog Inc. company, has over 30 years of expertise in supplying standard and custom marine products for harsh environment applications and is a leading



Contact Us

For datasheets, pricing, or custom high-speed optical interconnect solutions, please visit:
<https://www.syropy.com.pl>