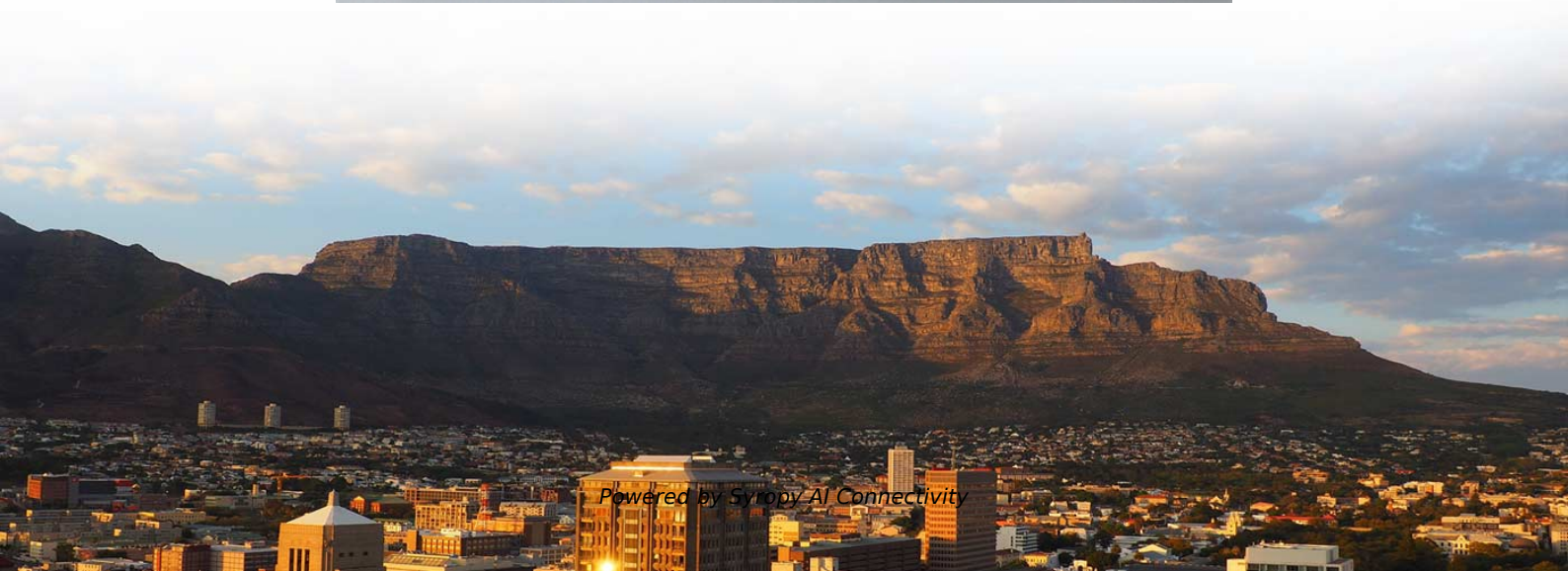


# **Fiber optic cable single-reel attenuation test standard**





## Overview

---

IEC 61280-4-5 provides test methods to measure the attenuation of installed multimode and single-mode optical fibre cabling plant as well as the determination of their polarity and length. Fiber optic testing of a newly installed system not only verifies that the system meets its design requirements, but also creates a performance baseline for all future testing and troubleshooting of the system. These test procedures assess the physical and functional qualities of fiber optic cables, connectors, and the network as a whole.



## Fiber optic cable single-reel attenuation test standard

---

### 12 Core Single Mode Fiber Optic Cable

Shop high-quality 12 core single mode fiber optic cables for reliable communication. Enjoy durable, efficient, and cost-effective solutions for your needs.



### 8 Best OTDR Fiber Optic Testing Equipment (April 2026) Expert

Discover the 8 best OTDR fiber optic testing equipment (April 2026). Our expert reviews highlight reliable, high-performance tools for accurate fiber network diagnostics and testing.



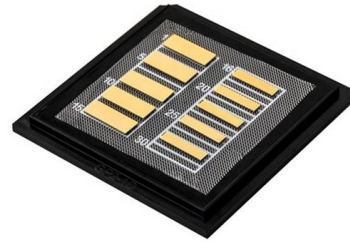
### Fiber Optic Installation Process 2026 Guide , ZION

Fiber optic cabling is now the foundation for modern connectivity. With proper planning, correct cable selection, professional installation and standards



### Fiber Optic Attenuation Fixes and Loss Budget Tips

Reliable fiber optics depend on minimizing fiber signal loss for better network efficiency, data integrity, and longer transmission distance. Key



### **OS1 vs OS2, OM3 vs OM4 vs OM5 - Fiber Optic Cable**

Discover the key differences between OS1 and OS2 singlemode fibers, and OM3, OM4, OM5 multimode cables. Learn how to select the right fiber type

### **Fiber Optic & Cable Standards Guide , FiberMania**

ITU-T G.652 is the global baseline standard for single-mode optical fiber. It defines the geometrical, optical, and transmission characteristics of SMF,



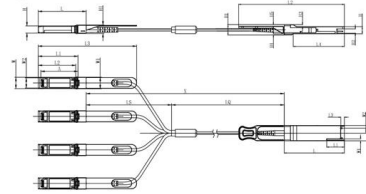
### **Fiber Optic Network Cable: 10 Best Powerful Picks 2025**

Most fiber optic network cable systems operate at wavelengths of 850 nm, 1310 nm, or 1550 nm. Engineers chose these because glass is most



## How to Choose the Best 6 Core Fiber Optic Cable: A Complete

Learn what to look for in a 6 core fiber optic cable, including types, specs, pricing, and key buying considerations for reliable network performance.



Unit mm

OSFP28	L	L1	L2	L3	L4	W	W1	W2	H	H1	H2	H3	H4	H5	H6
Max	72.2	-	128	4.35	61.4	18.45	-	6.2	8.6	12.4	5.35	2.5	1.6	2.0	-
Type	72.0	-	4.20	61.2	18.35	-	-	8.5	12.2	5.2	2.3	1.5	1.8	6.55	-
Min	68.8	16.5	124	4.05	61.0	18.25	2.2	5.8	8.4	12.0	5.05	2.1	1.3	1.6	-

SFP28	L	L1	L2	L3	W	W1	W2	H	H1	A
Max	57.6	47.7	44.55	119.9	13.8	14.0	12.3	8.7	10.3	45.25
Type	57.4	47.5	44.35	117.9	13.55	13.8	12.1	8.5	10.1	45
Min	57.2	47.3	44.15	115.9	13.3	13.6	11.9	8.4	9.9	44.65



## IEC 61280-4-2:2024

This part of IEC 61280 is applicable to the measurements of attenuation and optical return loss of an installed optical fibre cable cabling plant using single-mode fibre.

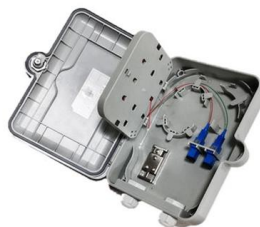
## Reference Guide to Fiber Optic Testing

Prior to installation, fiber inspections are performed to ensure that the fiber cables received from the manufacturer conform to the required specifications (length, attenuation, etc.) and have not been



## Fiber Optic Cable Testing Methods ,Fluke Networks

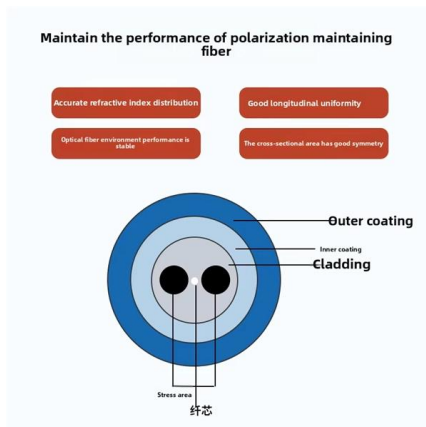
Table 1 summarizes the known attenuation measurement standards for installed optical fiber cabling, their test methods, and most importantly, when they should be used.





## How to Install Fiber Optic Cable: A Comprehensive Guide

Learn how to install fiber optic cable with Network Drops' easy step-by-step guide. Follow the process for quick and effective results.



## How Much Temperature Can Optical Fiber Withstand? A Complete

Learn the temperature limits of optical fiber (standard, high-temperature, low-temperature), how heat/cold affects performance, and how to choose resilient fibers for your application--Weunion's

### Single-mode optical fiber

In fiber optics, a quadruply clad fiber is a single-mode optical fiber that has four claddings. Each cladding has a refractive index lower than that of the core.



Equipped with a removable **Mounting Plate** inside the enclosure, enabling customized drilling and secure component mounting.



## ITU-T Rec. G.650.3 (08/2017) Test methods for installed single-mode

This Recommendation describes test methods that are particularly suited to the characterization of single-mode optical fibre cable links. The methods are not intended for application to links that



## Fiber-optic communication

An optical fiber patching cabinet. The yellow cables are single-mode fibers; the orange and blue cables are multi-mode fibers: 62.5/125  $\mu\text{m}$  OM1 and 50/125  $\mu\text{m}$



## Armored vs Unarmored Fiber Optic Cable: Your Complete Decision

Not sure whether to choose armored or unarmored fiber optic cable? Our 2026 guide breaks down protection, cost, installation, and performance--plus a quick decision checklist for data

## Fiber Testing Standards 2025 Guide for IEC and TIA Compliance

Stay compliant in 2025 with updated fiber testing standards for IEC and TIA. Learn key procedures, documentation tips, and legal requirements for your network.



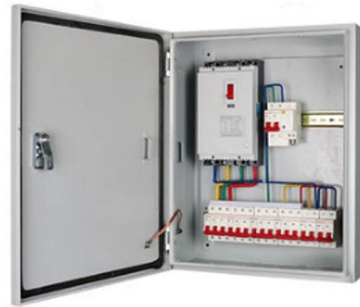
## Single-Mode Fiber Cable Guide: Types, Specs & Selection

Complete guide to single-mode fiber optic cables: G.652, G.657.A1/A2, OS1/OS2 specs, attenuation values, applications (telecom, FTTH, data center). Includes IEC 60793-2-50 compliant



## New IEC Standard for testing fibre optic cabling

The IEC has published a new standard for the testing of fibre optic cabling. IEC 61280-4-5 provides test methods to measure the attenuation of installed



## Fiber Optics Fundamentals: Construction, Transmission, and

The performance of a fiber optic system depends heavily on the physical and optical properties of its components. To understand and design reliable optical links, engineers must consider the

## LANscape Solutions Recommended Fiber Optic Test Guidelines

e OTDR testing results can vary as a result of user setup. To get a true measurement of an event with an OTDR, a trace needs to be shot from both direct launch cords is necessary to ensure reliable test



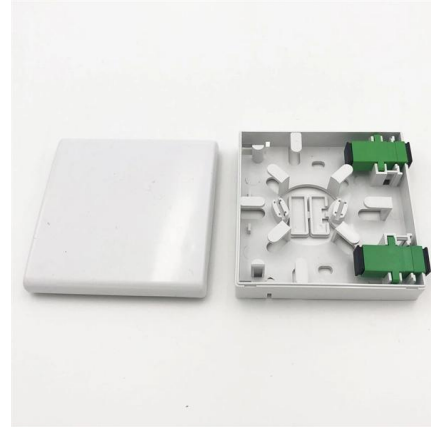
## Multimode vs Single Mode Fiber Optic Cables: A Complete Guide to

Learn the differences between multimode (OM1-OM5) and single mode (OS1-OS2) fiber optic cables--speed, distance, applications, and how to choose the right one for data centers and



## Optical Fiber Types & Standards , G652D, G657A2,

This guide explains different optical fiber types including G652, G657, and OM1-OM4. Learn how to choose the right fiber optic cable for telecom,

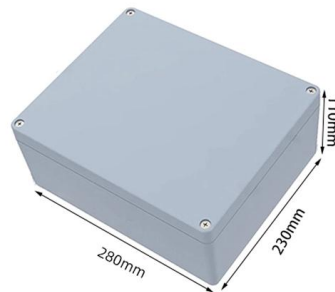


### The FOA Reference For Fiber Optics

See the Test section of the FOA Online Guide for much more detail. After fiber optic cables are installed, spliced and terminated, they must be tested. For every fiber

### 12 Core Single Mode Fiber Optic Cable for Backbone Projects

Cable de fibra óptica monomodo de 12 núcleos para proyectos de red troncal. 12 core single mode fiber optic cable should be selected by fiber standard, core count, jacket material, armor option, tensile



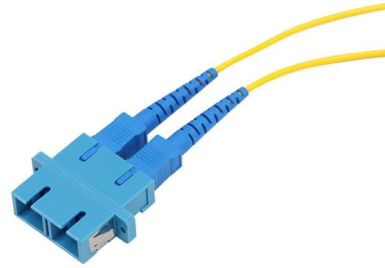
### Fiber Optic Issues: Troubleshooting & Prevention Tips

Solve common fiber optic network problems--attenuation, damage, connector issues. Learn troubleshooting steps, tools, and prevention to ensure reliable



## How to Choose the Best 12 Core Fiber Optic Cable: A Complete

Pre-terminated cables save time but require precise length measurement. Review Optical Specifications: Confirm attenuation, bandwidth, and compliance with ISO/IEC 11801 or TIA-568



## Contact Us

---

For datasheets, pricing, or custom high-speed optical interconnect solutions, please visit:  
<https://www.syropy.com.pl>