

# **Fiber optic cable attached to bridge arch**





## Fiber optic cable attached to bridge arch

---

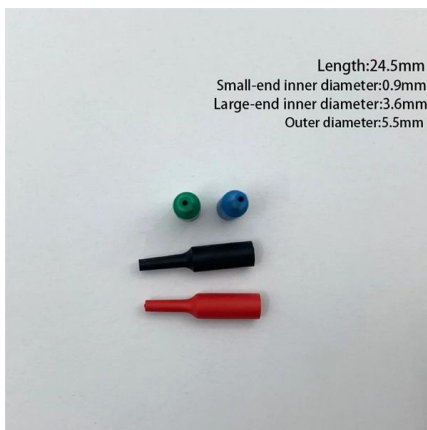


### STRUCTURAL HEALTH MONITORING OF THE LINGOTTO CABLE

The other half of the bridge is supported by cables attached to a large arch. The bridge geometry is quite complex. For example, the bridge deck is constructed on a radius, has a vertical rise and fall slope,

### Fiber optic based monitoring system applied to a

Request PDF , Fiber optic based monitoring system applied to a centenary metallic arch bridge: Design and installation , In the last decade, fiber optic sensors (FOSs) have been increasingly

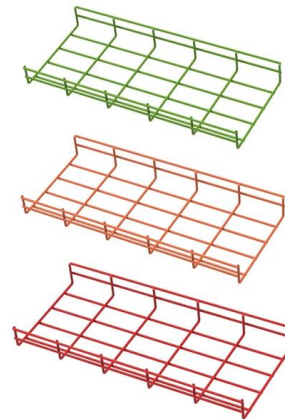


### Fiber optic based monitoring system applied to a centenary metallic

In this article the design of an advanced monitoring system based on fiber Bragg gratings (FBGs) and implemented in a XIX century steel arch bridge is reported. Three major requirements

### (PDF) Dynamic monitoring of a masonry arch rail bridge

The dynamic measurements are obtained by a distributed fiber optic sensing system that enables a novel inspection of the integrity of masonry arch



### **(PDF) Fiber optic based monitoring system applied to a**

In this article the design of an advanced monitoring system based on fiber Bragg gratings (FBGs) and implemented in a XIX century steel arch bridge is reported.



### **Dynamic monitoring of a masonry arch rail bridge using a**

This paper describes a proof-of-concept study carried out on a masonry arch rail bridge in Gavirate, Italy, to investigate the dynamic responses of the bridge to train-induced moving loads. The dynamic



### **Fiber optic based monitoring system applied to a centenary metallic**

A fiber optic based monitoring system was applied to a centenary steel arch bridge. Its design took into account key technical aspects and particularities of the bridge. A set of laboratory





## Fiber Optics For Electrical Utilities

Besides traditional cables lashed to messengers, figure-8 cables or ADSS cables, utilities can construct transmission links using optical ground wire (OPGW) or



## Fiberglass Electrical Conduit, Strut, Phenolic

Hier sollte eine Beschreibung angezeigt werden, diese Seite lässt dies jedoch nicht zu.

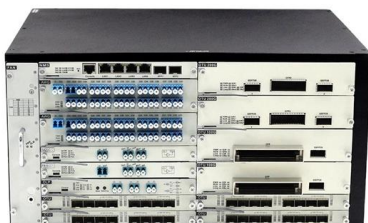
## Indoor and Outdoor Fiber Optic Cable Installation: Key

Explore best practices for installing indoor and outdoor fiber optic cables, including conduit, direct burial, riser, and aerial applications. Build stable,



## A Preliminary Case Study on the Dynamic Testing of a Masonry Arch

Request PDF , A Preliminary Case Study on the Dynamic Testing of a Masonry Arch Rail Bridge Using a Distributed Fiber Optic Sensing System , Masonry arch bridges are an integral part of



## Bridge Cables



Classify the bridge's superstructures according to the materials of constructions, span length, interspan relation, deck location, geometric shape span types, usage, and structural forms. 2. Describe the



**FTTH fiber cable: Bridge in FTTH network construction**

FTTH network construction application. The optical cables of the above new structures will be different in the process of the ftth cable manufacturer. At the



**Broadband Middle Mile Data Sheets**

When allowable conduit minimum bend radius is less than the fiber-optic minimum bend radius, design the system with a bend radius of the fiber-optic cable as the governing criteria to



**Distributed dynamic fibre-optic strain monitoring of the behaviour of a**

This paper aims to address this problem through detailed monitoring of a damaged, skewed masonry arch railway bridge in the UK, which was recently repaired.



## FIBER OPTIC CONSTRUCTION STANDARDS

Fiber optic cable sequential numbers are required at each pole location and vault wall. Sequential numbers will identify conduit length, and slack left in vaults and at poles.



## Distributed fiber-optic sensing of reinforced concrete

In this study, a comprehensive testing campaign was carried out, involving a variety of fiber optic cable types embedded in four RC specimens,

## Arch Bridges , Tensacciai

Arch Bridges TENSA, through its knowledge and experience, is capable of providing solutions for use of cable stays within arch bridges, where they act as hangers, for post-tensioning (arch and deck) and



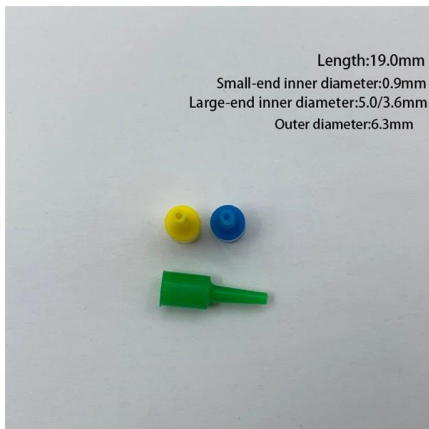
## How to Connect Fiber Optic Cable: Comprehensive Guide

Master how to connect fiber optic cable with our detailed guide. Step-by-step instructions to ensure you achieve the best performance and reliability in



### The three-dimensional flow of force in a damaged, skewed masonry

This paper presents novel applications of fibre-optic sensing and videogrammetry to measure and visualise the three-dimensional, dynamic structural response of a skewed masonry



### The FOA Reference For Fiber Optics -Outside Plant

Typically, optical fiber cables do not carry electrical power, but the metallic components of a conductive cable are capable of transmitting current. When the

### Attachment B Guidance for Broadband Installation on Bridges

The following are acceptable locations for mounting broadband on bridges or bridge length culverts, in order from most to least preferable, with comments provided to assist the permittee in assessing risk



### Fiber optic based monitoring system applied to a centenary metallic

Abstract In the last decade, fiber optic sensors (FOSs) have been increasingly preferred over electrical ones to integrate structural health monitoring systems installed on new bridges. The added value of



## Fiber Optic Cable Installation: How To Properly Install It

A comprehensive guide to fiber optic installation - everything you need to know about fiber optic cabling for your network



### (PDF) Dynamic monitoring of a masonry arch rail bridge

This paper describes a proof-of-concept study carried out on a masonry arch rail bridge in Gavirate, Italy, to investigate the dynamic responses

### Monitoring a Railway Bridge with Distributed Fiber Optic

This article explores the use of distributed fiber optic sensing (DFOS) technology in monitoring civil infrastructure, with a concrete example of an



### A Step-by-Step Guide to Fiber Optic Cable Installation

In our digital age, high-speed internet and reliable communication networks are powered by fiber optic cables, which



## Direct-Buried Installation of Fiber Optic Cable

Cable Precautions / Specifications CAUTION: Take care to avoid cable damage during handling and installation. Fiber optic cable is sensitive to excessive pulling, bending, and crushing forces. Any



## Contact Us

---

For datasheets, pricing, or custom high-speed optical interconnect solutions, please visit:  
<https://www.syropy.com.pl>