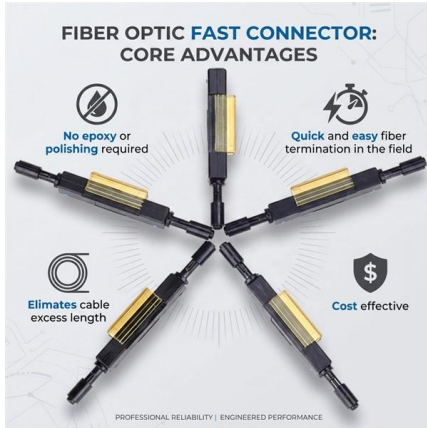


# **Fiber optic 4-core single-mode color**





## Fiber optic 4-core single-mode color



### Single Mode Fiber Optic Cable

Fiber Optic Cable, Tight Buffer, Single-Mode, 6 Strand, TeraFlex® Reduced water peak 900 Micron, OFNP, Plenum, Indoor/Outdoor, Water-Block/Sunlight Resistant, Jacket Diameter: 0.23", Color:

### Armored OS2 Corning Optical Fiber

Product Description Our Steel Armored Fiber Optic Cable features Rodent Resistant Spiral Steel Armor, 12 strands of OS2 9/125um Singlemode Corning® SMF-28®



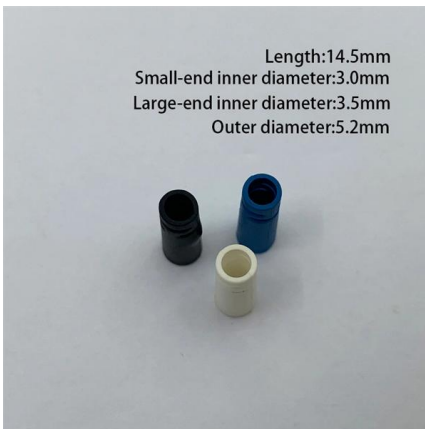
### 4 Core Optical Fiber Cable Specification

4 Core Optical Fiber Cable Specification. Optical Fiber Cable 4 Core. Key Features.



### Fiber Optic Cables , Fiber Patch Cables , Patch Cords,

We stand behind the craftsmanship of every fiber optic product we deliver. From Indoor / Outdoor, Single mode & Multimode to Mode Conditioning and SFP



### Fiber Color Code Guide: TIA-598 Standard Explained

Understand the TIA-598 fiber color code system for jackets, fibers, and connectors. Learn color meanings for single-mode and multimode optical cables.

### 6-Strand Singlemode Fiber Optic Cable

Single mode fiber is optimized to work with fiber optic equipment using light wave lengths of 1310nm (nanometers) or 1550nm, and has a maximum attenuation of



### Fiber Optic Color Code Explained: Jacket, Connector

The color of the connector boot or body can tell you whether it's single-mode or multimode, and what type of polish (UPC or APC) it uses. This is



### Understanding the 12 Strand Multimode



### Fiber Optic Cable: A

SDGI specializes in optical fiber and fiber optic cables, including both single mode and multimode fibers, which are crucial for high-speed, long-distance data transmission. Their portfolio



### Fiber Optic Color Code: Complete Guide to Cable

Standard colors used for fiber optic cables include yellow for single-mode fiber and orange for multimode fiber. Understanding these jacket colors is

### E-2000® Connector , High-Performance Fiber Optics

The E-2000® connector by DIAMOND - inventor of this reliable, high-performance fiber optic solution - offers low insertion loss and multiple interface options for



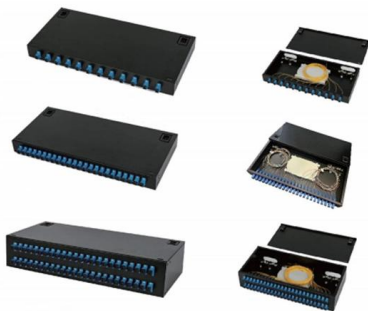
### High Flexible Outdoor Armored Fiber Optic Cable Simplex Singlemode

Key attributes Type FTTx Solutions Connector Type SC Use FTTH FTTX FTTB solutions Model Number TW-APC-SCSCA-2 Brand Name Twilight Optic Place of Origin Guangdong, China Warranty Time



## Fiber Color Code: The Ultimate Guide to TIA-598 Standards

You'll learn how to identify single-mode vs. multimode at a glance, trace individual strands in a 144-fiber bundle, and avoid the critical error of mixing connector types.

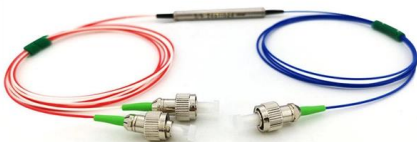


## Fiber Optic Cable Color Code: Complete Installation and

This standardized fiber optic color coding system helps prevent costly connection errors while dramatically reducing installation and maintenance time

## Optical fiber connector

An optical fiber connector is a device used to link optical fibers, facilitating the efficient transmission of light signals. An optical fiber connector enables quicker



## Corning 144 Strand FastAccess Singlemode Loose

This Singlemode OS2 fiber optic cable is designed to handle long-distance, high-traffic environments such as large universities, industrial parks, and enterprise



## Cisco 10GBASE SFP+ Modules Data Sheet

When shorter distances of single-mode fiber are used (<40km), an inline optical attenuator must be used to avoid overloading and damaging the



## Fiber Panels, Modules & Cassettes

Explore CommScope's efficient and scalable fiber splice panels designed for seamless connectivity. Accommodating LC, SC, and MTP/MPO connectors,

## Fiber Drop Cables

Fiber Indoor/Outdoor Drop Cable, LazrSPEED ®, Low Smoke Zero Halogen Single Jacket All-Dielectric Arid-Core, 6 fiber, Gel-filled, Multimode OM3, Feet jacket marking, Black jacket color, Dca flame rating



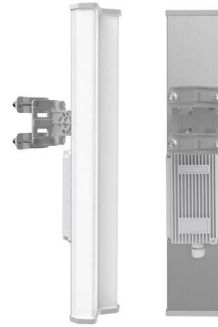
## Fiber Color Code: A Simple Guide for Beginners (2024)

For single mode UPC, the standard is blue, while for single mode APC terminations, green fiber connectors are used. It is crucial to distinguish UPC and



## Fiber Optic Cable Types: A Complete Guide

Typically, single mode fiber optic cables are made from a single glass fiber strand, resulting in a very narrow core diameter of around  $9\mu\text{m}$ . This is

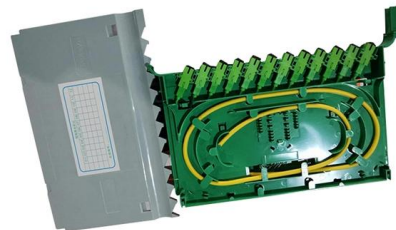


### 10 Packs Single Mode Fiber Lc To Lc 2m Os2 , Desertcart INDIA

The VIGTP 10-pack OS2 Singlemode LC to LC fiber optic cables deliver professional-grade 3Gbps data transfer with ultra-low insertion loss ( $\leq 0.3\text{dB}$ ) and high return loss ( $\geq 50\text{dB}$ ). Featuring a durable LSZH

### (24) 10 Meter LC/UPC

See the seller's listing for full details. See all condition definitions Compatible Brand Universal Brand Unbranded Type Optical Network Cable Color Yellow Connector B LC Connector A LC Features



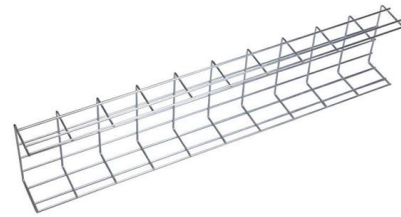
### Armored 6 Strand Indoor OS2 Fiber Distribution Cable,

Alternate Lengths 500ft 1000ft Custom Length Product Description Our Steel Armored Fiber Optic Cable features Rodent Resistant Spiral Steel Armor, 6



## Fiber Optic Color Code: The Ultimate TIA-598-C Guide

Master the TIA-598-C fiber optic color code standard. Read our complete guide and use our free interactive calculator to easily identify 1-144 core cables.



### 400M SC-SC Simplex Singlemode Fiber Optic Cable 9/125 Plenum

400 Meter Length Singlemode (9/125) Plenum SC-SC Simplex Single strand Fiber Optic Cable.



### OS2

Features: Ceramic ferrules for optimal data transmission Top-Quality Corning glass cores  
Connectors: 2x FC/UPC SM Connector 2x ST/UPC SM Connector Insertion Loss:  $\leq 0.20$  dB Return Loss:  $> -55$



### The Ultimate Guide to 4 Core Optical Cable: Specs, Color Codes, and

This guide covers everything you need to know about 4 core fiber, including its internal structure, TIA standard color coding, and how to choose the right type.



### Fiber Optic Cable Color Codes

When colored jackets are used to identify the type of fiber in cable containing only one fiber type, the colors shall be as indicated in Table 3. Other colors may be



### DATA ADJUSTABLE, EASY TO USE



SET INCREASE DECREASE POWER SWITCH

### WORLD WIDE WEB JOURNAL Home

O'Reilly & Associates, Inc. 103A Morris St.  
Sebastopol, CA United States

## Contact Us

---

For datasheets, pricing, or custom high-speed optical interconnect solutions, please visit:  
<https://www.syropy.com.pl>