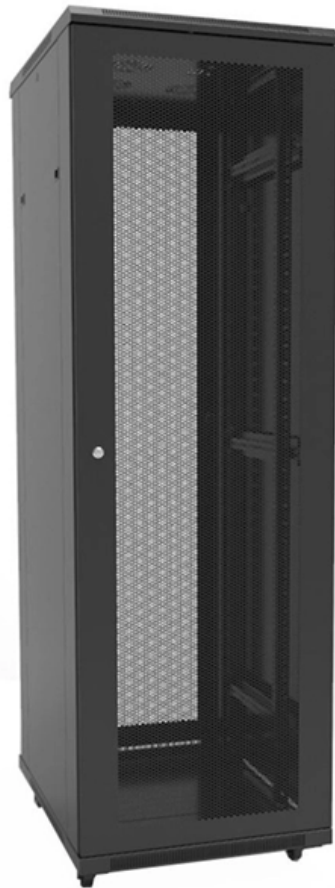


Fiber Optic Transceiver Single-Mode Single-Fiber Core





Fiber Optic Transceiver Single-Mode Single-Fiber Core

Single-mode vs Multimode SFP: What's the Difference?

Discover the differences between single-mode and multimode SFP transceivers. Learn which one suits your network needs for optimal performance



Singlemode transceiver modules buy online

Discover our diverse selection of singlemode transceiver modules, which have been specially developed for long-lasting, reliable and powerful fibre optic communication.



The Key Differences Between 1-core, 2-core, Single

Single Mode fibers have a smaller core, allowing light to travel in a single, straight path, ideal for long distances with less signal loss. Multi-mode

Fiber Optic Cables, Patch Panels & Networking Products

LC-LC 12 Core SM 0.9mm 9/125 Single mode Fiber Patch Cable Fiber Patch Cables also known as fiber jumpers or fiber patch cords. Fiber optic patch cable is one of



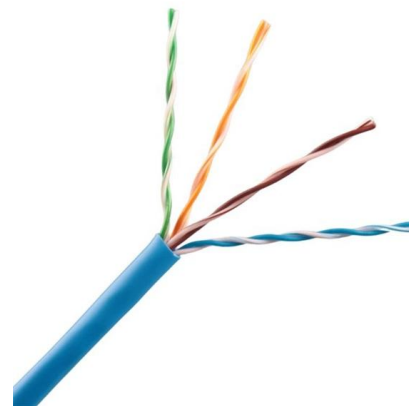
SEL-2829 Single-Mode Fiber-Optic Transceiver/Modem

Single-Mode Fiber-Optic Transceiver/Modem Improve safety, signal integrity, and reliability by using two optical fibers instead of wire to transfer bidirectional serial data using single-mode optical fiber. Apply



SFP-GE-CS-SM 1.25Gbps 1310nm Single-mode

The transceiver consists of four sections: the LD driver, the limiting amplifier, the DFB laser and the PIN photo-detector. The optical output can be disabled by a TTL



Single Mode SFP Transceiver , Optcore

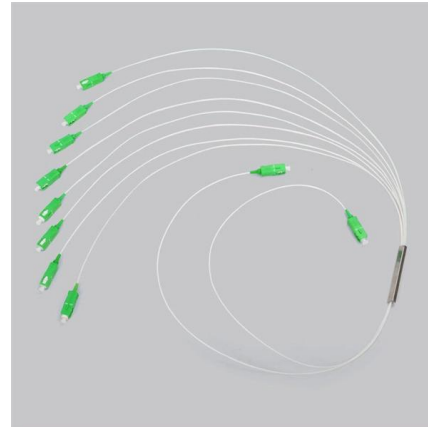
Equip with a long wavelength single mode optical transmitter and receiver, this SFP is suitable for single mode fiber systems. It is targeted at medium to long-reach





Multi-mode optical fiber

The equipment used for communications over multi-mode optical fiber is less expensive than that for single-mode optical fiber. Because of its high capacity



Single Mode Fiber Transceivers - Fiber Savvy

Fiber Savvy has you covered when it comes to quality Single Mode Fiber Transceivers. Single Mode Fiber Optic Transceivers are essential components in high-speed, long-distance data transfer networks.

Cisco 40GBASE QSFP Modules Data Sheet

Cisco QSFP-40G-SR-BD (40G BiDi) The Cisco QSFP 40-Gbps BiDirectional (BiDi) transceiver (Figure 1) is a pluggable optical transceiver with a duplex LC connector interface for short



Singlemode Fiber Optic Transmitters, Receivers, Transceivers

Mouser offers inventory, pricing, & datasheets for Singlemode Fiber Optic Transmitters, Receivers, Transceivers.



What is QSFP & QSFP+ Transceiver: An Ultimate Guide

40GBASE-PSM4: PSM4 stands for Parallel Single Mode 4 lanes; it utilizes the MPO connector instead of the LC connector, based on parallel optics



Understanding 400G DR4 Optical Transceiver: A Complete Guide

Key Features of 400G DR4 Optical Transceivers
Engineering implementation of PAM4 and 1310nm The use of PAM4 enables 400G over limited bandwidth, but it also reduces the signal-to

Fiber Optic Color Code: The Ultimate TIA-598-C Guide

Master the TIA-598-C fiber optic color code standard. Read our complete guide and use our free interactive calculator to easily identify 1-144 core cables.



1G SFP Modules: A Deep Dive into Specs & Types

Learn how to choose and optimize 1G SFP modules. Compare specs, fiber vs copper types, troubleshooting tips, and best practices for reliable networks.



Fiber-optic communication

An optical fiber patching cabinet. The yellow cables are single-mode fibers; the orange and blue cables are multi-mode fibers: 62.5/125 um OM1 and 50/125 um



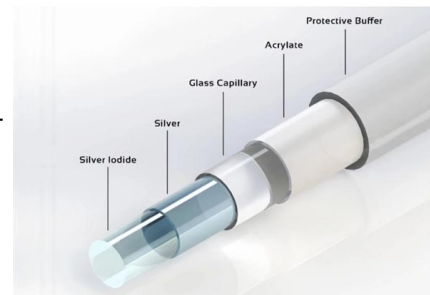
mpo 16: 2026 Procurement Guide

By consolidating 16 optical fibers into a single MT ferrule, this architecture provides a direct, one-to-one lane mapping for advanced SR8 and DR8 transceivers. However, deploying these ultra



What is the LRO Transceiver? The Simple Guide to Linear Receive Optics

What Is an LRO Transceiver LRO (Linear Receive Optics) is essentially a half-retimed optical module architecture. Traditional high-speed optical modules typically deploy DSPs on both



The Ultimate Fiber Optic Cable Size Reference Chart

Choosing the Right Fiber Size for Your Application Selecting the correct fiber optic size for your specific application is crucial to ensuring optimal



Armored Fiber Optic Patch Cables , LC SC ST Singlemode & Multimode

Shop armored fiber optic patch cables with LC, SC, ST connectors. Durable, crush-resistant cables for harsh environments, data centers, and outdoor use.



Single Mode SFP Transceiver: Complete Guide Explained

In this guide, you will learn what a single mode SFP transceiver is, how it works, the key specifications and types available, and where it is commonly used.

SFP-4330 1.25Gbps Single-mode BiDi(WDM) Industrial SFP

The LevelOne SFP-4330 is a high-performance, cost-effective 1.25Gbps BiDi (WDM) Industrial SFP transceiver designed for single-mode fiber for the link up to 20km applications.



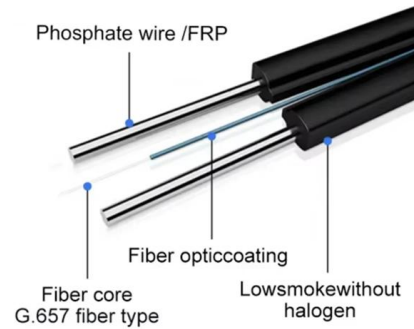
Fiber Optic Terminology & Definitions , Fiber Terms Guide

GPON (Gigabit Passive Optical Network): GPON (Gigabit Passive Optical Network) is an advanced version of PON that provides high-speed internet access, voice,



Singlemode vs Multimode Fiber Optic Cable

We breakdown the differences between single mode and multimode fiber optic cable, covering aspects like physical structure, bandwidth over



Small Form-factor Pluggable

SFP transceivers are available with a variety of transmitter and receiver specifications, allowing users to select the appropriate transceiver for each link to

Contact Us

For datasheets, pricing, or custom high-speed optical interconnect solutions, please visit:
<https://www.syropy.com.pl>