

# **Fiber Optic Through-beam Sensor Technology Description**





## Fiber Optic Through-beam Sensor Technology Description

---



### Fiber Optic Sensors: Fundamentals, Principles & Applications

Extrinsic Fiber Optic Sensors Fiber is Only an Information Carrier To and From a Black Box Light Signal Generation in Black Box Depending on the Arriving Information

### Diffused, through-beam and retroreflective photoelectric

Three basic types For most applications, the choice of photoelectric sensor comes down to one of the three commonest types: through-beam, retroreflective and



### Through Beam Fiber Optic Proximity Sensors , GlobalSpec

KEYENCE'S FS-N Series contains a multitude of innovative features; including one-touch calibration, dual digital display, automatic maintenance, and MEGA power mode, making them an industry

### Products

photoelectric sensors including fiber sensors, displacement sensors, vision sensors, LED lightings for machine vision, non-contact thermometers and accessories for



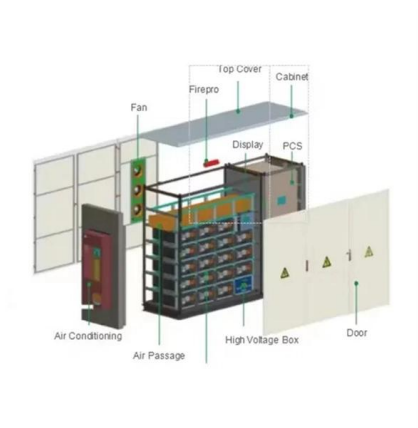
### 150505 en v2.0 Fibre-optic cable unit SE through-beam sensor design

The light is conducted to the receiver of the optical proximity sensor via the receiving fibre-optic cable. The fibre-optic cables can be cut to the desired lengths (e.g. with a cutter or a scalpel). In order to



### Through-beam sensors

Through-beam sensors from Balluff serve to detect objects reliably, regardless of surface, color, material - even with a heavy gloss finish. They consist of separate



### Overview of Photoelectric Sensors , OMRON Industrial

Photoelectric Sensors detect photo-optical workpieces. OMRON provides many varieties of Sensor, including diffuse-reflective, through-beam, retro-reflective,



## What is a Fiber Optic Sensor?

The optical fiber consists of the core and the cladding, which have different refractive indexes. The light beam travels through the core by repeatedly bouncing off the

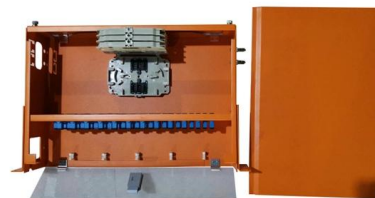


## Introduction to Fiber Optic Sensors and their Types

Fiber Optic Sensors Significantly, the telecommunication technology has changed the recent advances in fiber optic technology. The last revolution appeared as

## Thru-Beam/Opposed Mode Sensors , TRI-TRONICS

High-resolution photoelectric sensor capable of performing sensing tasks most other sensors can't accomplish. It provides extended operating ranges, enhanced



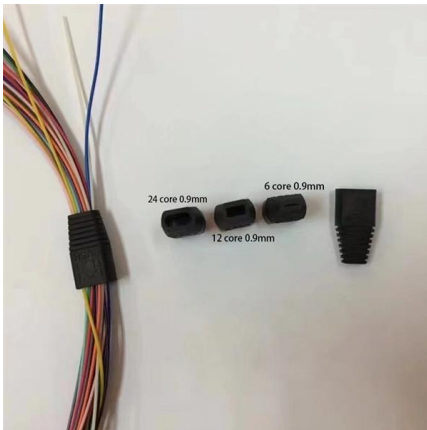
## Thru-Beam/Opposed Mode Sensors , TRI-TRONICS

AC/DC Sensor with Timer, Relay, or Triac Output  
Self-contained, easy-to-use sensors available in a wide variety of sensing models (thru-beam, retroreflective,



## Through Beam Optical Sensors - Mouser

Through Beam Optical Sensors are available at Mouser Electronics. Mouser offers inventory, pricing, & datasheets for Through Beam Optical Sensors.

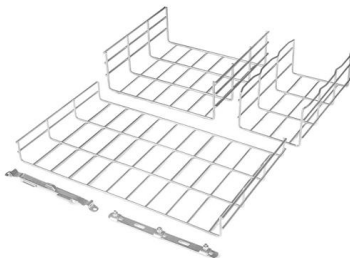


### E20827

All information about the E20827 at a glance. We assist you with your requirements. Technical data Mounting and Installation Instructions CAD drawings Compatible

## Through Beam Fibre Optic Sensors - Mouser Europe

Through Beam Fibre Optic Sensors are available at Mouser Electronics. Mouser offers inventory, pricing, & datasheets for Through Beam Fibre Optic Sensors.



### FT Thru-Beam Type Fiber Optic Sensors

Panasonic Industrial Automation FT Thru-Beam Type Fiber Optic Sensors feature tough, high-quality fiber and a reduced risk of breaking and



### Through Beam Fiber Optic Sensors - Mouser

Fiber Optic Sensors M3 threaded fiber with built-in lense Learn More about Panasonic Industrial Automation panasonic ft thru beam sensors Datasheet 6In Stock 1: \$55.00 10: \$49.50 25: \$47.30



### Through Beam Fiber Optic Proximity Sensors , GlobalSpec

Fiber optic through beam sensor -- E20059 from ifm efector inc. For installation with limited mounting space. Operation as through-beam sensor. Long range. Resistant to various aggressive chemicals.

### Through Beam Rectangular Fiber Optic Sensor

Choosing ATO's through beam rectangular fiber optic sensors to enjoy top performance! This fiber optic sensor has a 10mm/15mm/20mm detection range



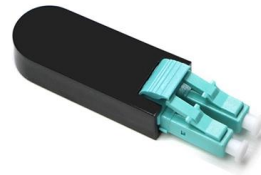
### fiber optic through-beam and dif. reflection sensors

description The ipf plastic fiber optic systems consist of a flexible pla-stic fiber with a sensing head and an optoelectronic fiber optic amplifier. The principle of operation is similar to a through-beam sen-sor



## Fiber Optic Sensor

Abstract Fiber optic sensors represent an innovative technology for automated measurement of cable forces which are critical in construction and operation of many civil engineering structures. This paper



### E20752

All information about the E20752 at a glance. We assist you with your requirements. Technical data Mounting and Installation Instructions CAD drawings Compatible

## Photoelectric Sensors , Fiber-Optic Sensors , Fiber-Optic Cables , NF

Thread type Fiber-Optic Cables (through-beam type) \*Download the drawing to check the tolerances. Click the image to enlarge.



### FT-A11 PANASONIC, Fiber Optic Sensor, Through

FT-A11 Fiber Optic Sensor, Through Beam, Wide Beam, 3.6 m Image is for illustrative purposes only. Please refer to product description.



### Array Through-beam Fiber Optic Sensor

Engineered for seamless integration, this sensor is fully compatible with all standard fiber optic amplifiers, including both conventional and analog output amplifiers,



### Photoelectric Through Beam with Fiber-Optics

Challenge: Photoelectric sensors are often used with fiber-optic cables in the through-beam/opposed mode. While there are numerous advantages/trade-offs associated with the through-beam mode, the

### Through Beam Fiber Optic Sensors - Mouser

Through Beam Fiber Optic Sensors are available at Mouser Electronics. Mouser offers inventory, pricing, & datasheets for Through Beam Fiber Optic Sensors.



### Through-Beam Type Sensors

Whether you need sensors for high-speed production, transparent object detection, or precision positioning, we have the right solution for you. For



### **Through beam fiber-F& C sensors**

Meet the special requirements of high speed, high precision, energy saving and high temperature resistance.



## **Contact Us**

---

For datasheets, pricing, or custom high-speed optical interconnect solutions, please visit:  
<https://www.syropy.com.pl>