

Fiber Optic Patch Cord Pull Gauge





Fiber Optic Patch Cord Pull Gauge



How to Properly Test the Insertion Loss of Fiber Optic

Introduction Fibre optic patch cords, also known as fibre jumpers or fibre patch cables, are one of the most common components in fibre optic

How to Test Pull-Push Patch Cord Strength: IEC 60794-1-2 Tensile

Is your fiber network truly secure? Watch us stress-test our SC/APC Pull-Push Patch Cord to the limits according to IEC 60794-1-2. See if it can handle the real-world pulling forces of



Fiber Optic Patch Cords & Pigtails Selection Guide

Learn how to pick the right fiber optic patch cord or pigtail. Avoid installation errors. Based on 12+ years of field experience. Step-by-step guide

How to Test Fiber Optic Patch Cords , FIBEYE

IL and RL testing: This test measures insertion loss and return loss of the fiber optic patch cords to ensure the accessibility and stability of signal transmission.



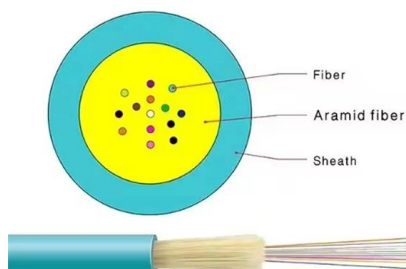
Components of the Fiber Optic Patch Cord and Optic

In Part 1 of our Fiber Optic Cable Assembly Manufacturing Series, is an overview of fiber optic patch cord cable construction and optic fiber geometry.



Fiber Optic Interconnects, Patch Cords & Pigtails

Fiber Optic Interconnects, Patch Cords & Pigtails
Something went wrong. If the problem persists contact the administrator.



2m, 3m, 10m, or Custom? Complete Guide to Fiber

Learn how to choose the right fiber patch cord length for your network setup. Compare standard vs custom patch cable options with practical examples



SC Pullable patch cord

The patch cord provides a mini pullable cap with a pulling eye, which can easily pull through preburied duct. After pulling out and remove the pulling cap, simply



Fiber Optic Patch Cords

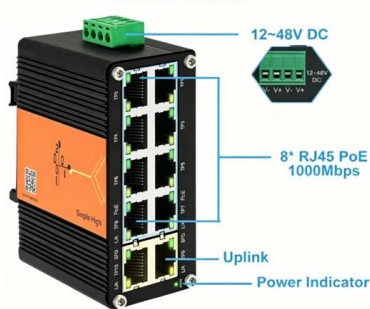
Our fiber optic patch cords and pigtails are designed for low insertion loss and high return loss, making them ideal for communication networks and FTTX applications.

Fiber Optic Cable vs Patch Cord vs Pigtail - Complete

When you build or upgrade a fiber network, the same four words pop up everywhere-- fiber optic (bare fiber), pigtail, patch cord, optical cable. They're



10 Ports PoE Switch 12~48V DC
Booster Function



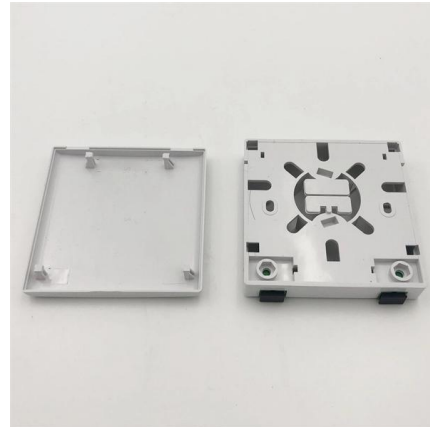
Fiber Optic Pigtails: Uses & Differences from Patch Cords

Understand fiber optic pigtails -- definition, types, and how they differ from patch cords. Learn why pigtails ensure reliable, low-loss fiber terminations.

yingdapc



Hier sollte eine Beschreibung angezeigt werden, diese Seite lässt dies jedoch nicht zu.



Fiber Optic Patch Cables

We offers diverse range of single fiber ferrule connectors, which manufactured with precision factory mounting and polishing techniques to assure high transmission

Fiber Optic Patch Cord Performance Testing

Verifies that the patch cord introduces minimal attenuation (IL) and reflections (RL), ensuring signal integrity and link budget margins. Characterizes



Pulling Fiber Optic Cable in Conduit

AEN 136, Revision 2 stallers should consider bend radius, tension, jamming, and fill ratio before performing any conduit pull. Corning Optical Communications recommends the American



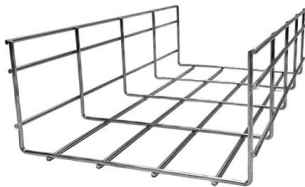
Opti-Core Push-Pull LC Duplex Fiber Optic Patch Cords

OM4+ Signature Core™ provides on average 20% longer reach than OM4 defined standard for all applications using Ethernet, Fibre Channel and Cisco BiDi technologies.



Specifications for Standard Patch Cords MPO/MTP Cable Assemblies

Specifications for Standard Patch Cords Diagram and Cross Section of Cable Optical Fibre 900um buffer fibre Strength Member Jacket (Flame retardant LSZH)



Fiber Optic System Testing Tutorial

Patch cords or equipment jumpers are used to bridge the network electronic ports to the fiber optic link contained between patch panels (also known as "cross-connects"). Figure 1 below



Fiber Optic Patch Cables: The Complete 2026 Buyer's Guide

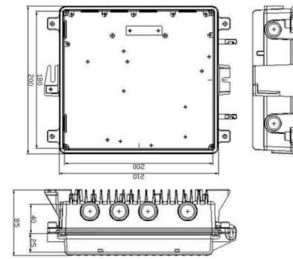
Confused by LC, SC, MPO, UPC, and APC? This complete fiber optic patch cable guide covers connector types, single-mode vs multimode, insertion loss specs, and how to choose the right





Opti-Core Push-Pull LC Duplex Fiber Optic Patch Cords

technical information The Opti-Core® Push-Pull LC Duplex Fiber Optic Patch Cords contain a custom push-pull strain relief boot and duplex clip, which allows users easy accessibility when



Fiber Optic Patch Cords: Specifications , RLH Industries,

RLH patch cords are commonly used in communications, data centers and industrial control environments, and are ideal for reliable and rapid interconnection of any

How Fiber Optic Patch Cords Are Manufactured and

Explore the complete manufacturing and testing process of fiber optic patch cords, including polishing, assembly, and IL/RL testing. Discover how



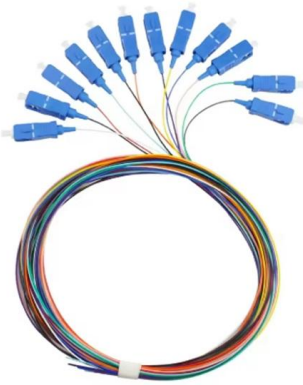
Armoured Fiber Optic Patch Cord , FiberTek

Armoured patch cord is used in the connection of fiber optic equipment to equipment or patch panel to equipment in a more rugged environment. The spiral steel tape



Ultimate Guide to Fiber-Optic Patch Cables: Types, Selection, and

Learn about fiber optic patch cables, their types, construction, applications, and how to choose the right one for your network needs.



Effective Patch Cord Management Guide

Effectively patch cord management can reduce overall operational cost of your fiber optic network. Enhancing its reliability and flexibility.

Fiber Optic Patch Cord Performance Testing

In the realm of high-performance optical networks, the humble fiber optic patch cord (or jumper) plays a critical but often underappreciated role. As an



Contact Us

For datasheets, pricing, or custom high-speed optical interconnect solutions, please visit:
<https://www.syropy.com.pl>