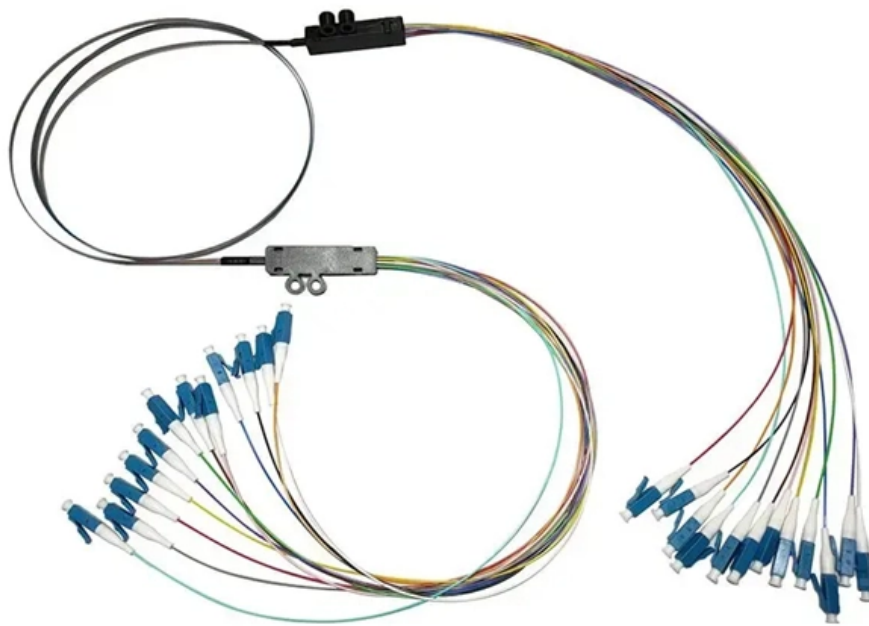


Fiber Optic Inspection at Junction Box Branch Points





Overview

First step is to make an accurate inspection of the ferrule, using a video microscope. They define a minimum baseline of quality and workmanship for installing electrical products and systems. This Applications Engineering Note (AEN 135) explains and recommends standard measurement methods for characterizing optical fiber system performance. This note also provides background information on system link configurations, test equipment and system component considerations that influence. Pull and junction boxes and FOMHs serve many purposes; their primary function, however, is to facilitate and provide a means of pulling conductors or cables through a conduit. There are three main principles that need to be taken in consideration for an efficient optical connection: a perfect core alignment, perfect physical contact and dirt-free connectors.



Fiber Optic Inspection at Junction Box Branch Points

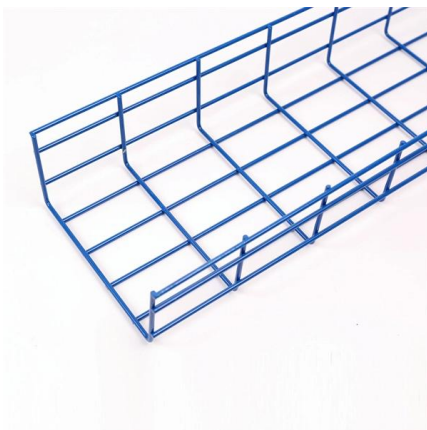
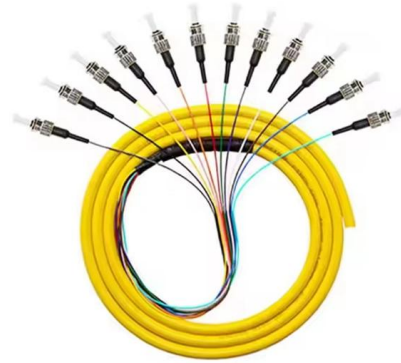


CFX Inspection Reference & Training Manual Chapter 6 Fiber Optic

6.0 OVERVIEW OF THE FIBER OPTIC NETWORK (FON) This section provides a general overview of CFX's IT, ITS and Tolling systems outside plant communications infrastructure commonly referred to

Fiber Optics inspection, cleaning and testing

First step is to make an accurate inspection of the ferrule, using a video microscope. Simply connect the fiber optic connector to the microscope probe and the test will be done automatically. Each type of

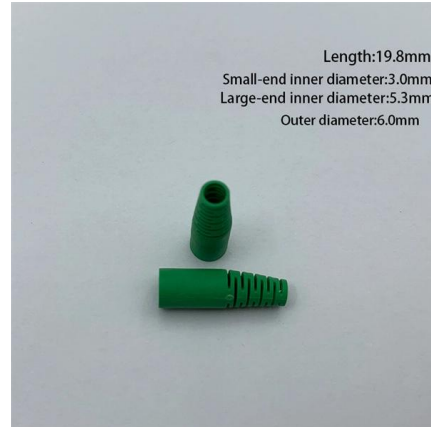


Which Fiber Optic Junction Box is Best?

When it comes to fiber optic junction boxes, a variety of options are available. Usually, a common question asked by customers is which box is best for their application. This is a question with

Fiber Optic System Testing Tutorial

When a fiber optic connector is plugged directly into an electronics port ("transceiver") it is generally considered that optical loss is not occurring at this junction.



6 Must-Know Insights on Fiber Distribution Box

A Fiber Distribution Box (FDB) is a component used in fiber optic networks for power distribution and terminal connections. It serves as a junction



Optical Fiber Cable Installation Guideline

Optical fibers can be scribed with a sharp blade of hard material such as a diamond, ruby, sapphire or tungsten carbide. The scribe is made by lightly touching the cleaned fiber, at a right angle, on the



CFX ITS Inspection Reference & Training Manual

Unlike electrical pull boxes, fiber optic pull boxes are round and shall be stamped with "CFX FIBER." Depending on the size of the fiber optic cable passing through it or i



Fiber Optic Junction Box Installation Guide

It is a condition of certification that the precautions must be taken to avoid dust from forming layers on the encoder. res at the branching point can reach 80°C. Selection of cable must be appropriate for



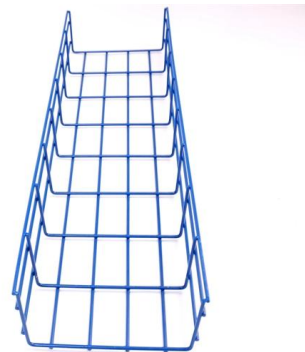
Essential Guide to Optical Cable Junction Boxes: Key Benefits & FAQs

While some junction boxes are versatile enough for both indoor and outdoor use, it's best to choose a box specifically designed for outdoor conditions if used outside to ensure better protection. How do I



InstallGuide

Although most fiber optic cables are not conductive, any metallic hardware used in fiber optic cabling systems (such as wall-mounted termination boxes, racks, and patch panels) must be grounded.



Fiber Optic Cable Inspection Checklist

The GIS capability of Fielda helps inspection teams instantly map and visualize the entire infrastructure network, identify exact points to be inspected, and make detailed observations concerning specific



Fiber inspection technical poster

Connect the probe to the connector and select the corresponding IEC standard. Set magnification to high. Find the fiber image, center it and adjust the focus. Start the analysis using the Capture button.



Ultimate Guide to Fiber Optic Distribution Box: Types

Fiber optic technology has revolutionized the telecommunications industry, enabling faster and more reliable data transmission. One essential

Inspecting & Diagnosing Fiber Optic Connections

One of the best uses for these devices is to trace fibers using the fiber optic utility test Break in fiber connector of the unit. The light output will be visible to



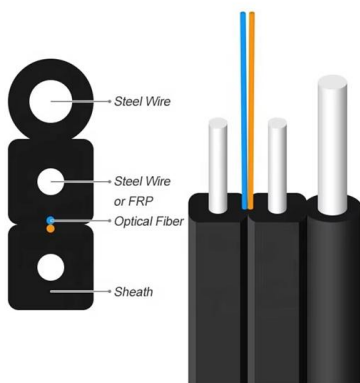
Junction Box Inspection and Test Plan

Junction Box Inspection and Test Plan - General Note: 1) Junction Box Witness/hold point by Code Inspector, when applied by Code /Local Regulation, is to comply



The FOA Reference For Fiber Optics -Outside Plant

Typically, optical fiber cables do not carry electrical power, but the metallic components of a conductive cable are capable of transmitting current. When the



Guidance Notes on Recommended Specifications of Junction Box and

The junction box is typically used for terminating multiple field devices of common systems in a general area. Instrument junction boxes should be designed to suit the environmental conditions of the

How to Choose the Right Optical Junction Box?

Choosing the right optical junction box is crucial for ensuring the performance, reliability, and longevity of your optical networks. With the increasing demand for high-speed internet and



25-Point Instrumentation Junction Box (JB) Wiring and

Ensure safe and compliant instrumentation JB wiring in process plants. Use this detailed 25-point checklist for inspection, termination, and QA verification.



FOA Standard For Installing Fiber Optic Cable Plants

Outside plant (OSP) fiber optic cable installations are typically point-to-point links with two fibers used for full duplex communications. Cables are spliced where needed for long continuous links and



Fiber Optic Cable Inspection Checklist , PDF , Optical

This document provides a fiber optic cable inspection checklist. It includes sections for general information about the inspection such as date, location, cable type.

Fiber Optic System Testing Tutorial

When a fiber optic connector is plugged directly into an electronics port ("transceiver") it is generally considered that optical loss is not occurring at this junction. The reason for this is simple-



Inspection and Cleaning Procedures for Fiber-Optic

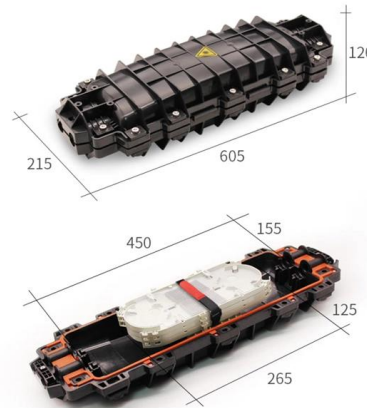
This document describes inspection and cleaning processes for fiber optic connections. It is important that every fiber connector be inspected and

Fiber Junction Box: Your Guide to



Installation, Types,

Discover the world of Fiber Junction Boxes! Explore installation tips, different types, and the advantages they offer. Get expert insights for seamless



Standard for Installing and Testing Fiber Optics

Although most fiber optic cables are not conductive, any metallic hardware used in fiber optic cabling systems (such as wall-mounted termination boxes, racks, and patch panels) must be grounded.

Fiber Terminal Box vs Junction Box: Key Differences

Compare fiber terminal box vs junction box in functions, applications, and installation. Learn which suits FTTH fiber vs electrical wiring.



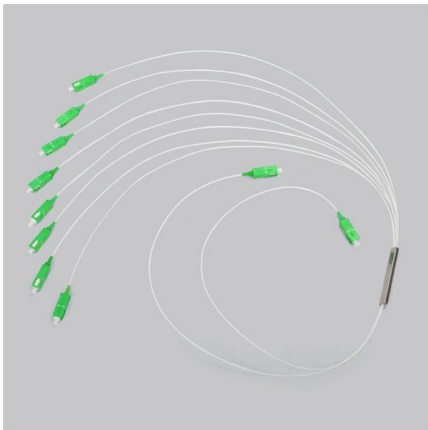
FIBER OPTIC CONSTRUCTION STANDARDS

Fiber optic cable sequential numbers are required at each pole location and vault wall. Sequential numbers will identify conduit length, and slack left in vaults and at poles.



FIBER TESTING BEST PRACTICES

Whether you handle fiber on a regular basis or just occasionally, this reference guide will serve as a useful tool to ensure you never miss a critical step during your fiber testing or troubleshooting.



Inspecting Electrical Connections

In this article, I'll focus on electrical connections. All electrical circuits terminate in some form at their point of origin and also at their end destination. Depending on

Contact Us

For datasheets, pricing, or custom high-speed optical interconnect solutions, please visit:
<https://www.syropy.com.pl>