

Fiber Optic Enterprise Router SFP for Data Centers





Fiber Optic Enterprise Router SFP for Data Centers

The Ultimate Guide to Data Center Fiber Connectivity

Data center fiber connectivity refers to the network infrastructure that enables data transmission between servers, storage systems, and other devices within a data



Cisco SFP: Unlocking the Power of Optical Transceiver

Cisco SFP-10G-ZR modules are tailored to optimize the reach and performance for high speed networks in data centers and enterprise-level



10G SFP+ Optical Transceivers , Transceiver Module

FS 10GbE SFP+ module solutions provide a wide variety of 10 Gigabit Ethernet connectivity options for data centers, enterprise wiring closets, Internet Service



The Ultimate Guide to SFP Modules (2026): Types,

Introduction Even in the era of Wi-Fi 7 and 5G, Optical Transceivers remain the backbone of the internet. From the core connections of enterprise LANs to the



The Ultimate Guide to SFP Modules (2026): Types,

Confused by SFP vs SFP+? Read the definitive 2026 guide on SFP modules. We explain Single Mode vs Multimode, DDM diagnostics, and how to choose the right

SFP28 25G SR Optical Modules: High-Performance Network Solution

Explore the benefits of SFP28 25G SR optical modules for fast, cost-effective connectivity in data centers, enterprise networks, and 5G. Upgrade your network with FS.



5-INCH COLOR TOUCHSCREEN

Intuitive operation, easily accessible with just one touch



Cisco SFP vs GBIC vs XFP vs SFP+: A Practical

Learn the differences between SFP, SFP+, GBIC, and XFP modules - speeds, distances, and compatibility, from Network-Switch experts.



Understanding SFP Port: A Guide to Gigabit Ethernet

Overview of SFP Ports SFP ports are commonly found in switches, routers, network interface cards (NICs), and other networking equipment. They



Cisco 10GBASE SFP+ Modules Data Sheet

The Cisco ® 10GBASE SFP+ modules (Figure 1) give you a wide variety of 10 Gigabit Ethernet connectivity options for data center, enterprise wiring closet, and service provider transport

SFP+ SR, LR, and ER Modules: Your Definitive Guide to

High-speed data transmission in enterprise and data center networks is driven by 10G optical modules. Choosing the proper SFP+ module, whether it



Cisco SFP vs GBIC vs XFP vs SFP+: A Practical Comparison Guide

Learn the differences between SFP, SFP+, GBIC, and XFP modules - speeds, distances, and compatibility, from Network-Switch experts.



A Simple Guide to SFP-10G-SR and Its Practical Uses

SFP-10G-SR enables fast, reliable short-range connections in data centers, enterprise networks, and campus environments using multimode fiber.

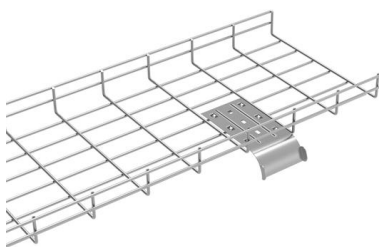


10GBASE-SR SFP Module Enterprise Class: Complete Guide

Learn what a 10GBASE-SR SFP Module Enterprise Class is, how it works, key specs, temperature range, compatibility, and how to choose the right 10G SR transceiver.

Home

For years, Service Providers and Enterprise customers have trusted Tellabs to help modernize network connectivity with better performance, stricter



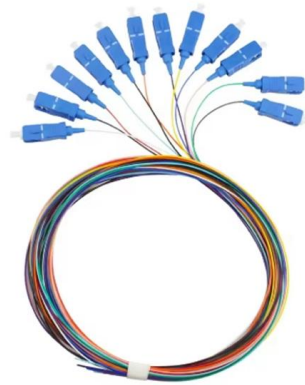
Fiber Optic Cabling Solutions for Enterprise Data Centers

MTP® fiber cables using Corning ClearCurve® Fiber, which reduces optical loss in tight bends. The high-performance MT-based US Conec MTP® connector is ideal for data center and carrier-grade



Fiber Optic Cabling Solutions for Enterprise Data Centers

MTP® fiber cables using bend insensitive fiber, which reduces optical loss in tight bends. The high-performance MT-based US Conec MTP® connector is ideal for data center and carrier-grade



RUTXR1 Rack-mountable SFP Router

The first rack-mountable LTE Cat 6 router in the Teltonika Networks portfolio comes with redundant power supplies, WAN failover, dual-SIM, SFP, USB, and dedicated console ports.

Discover the Ultimate SFP+ Router for High-Speed

SFP+ Modules & Cabling: You should use fiber optic or copper cables that are compatible with the SFP+ modules because failure to comply may



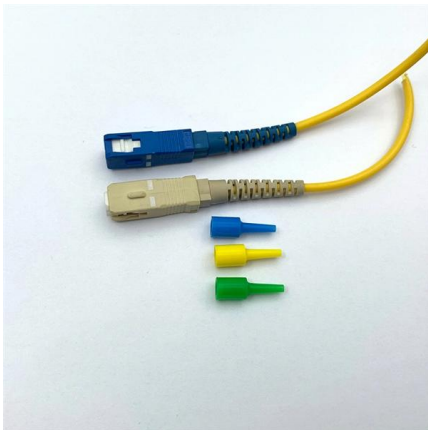
What is an SFP? Learn how SFP transceivers work,

They can connect switches, link routers to fiber backbones, extend LANs and WANs, interconnect data centers, power passive optical networks, and



SFP vs. SFP+: The Ultimate Cisco Transceiver Guide

These transceivers connect critical devices like switches, routers, and servers over fiber or copper cables, facilitating smooth data transfer. Whether



SFP Interface: Definition, SFP vs. RJ45, Uses and Applications

In modern networking equipment, the SFP Interface has become a standard method for connecting switches, routers, and servers to high-speed network links. Instead of relying on a fixed

Cisco SFP Modules for Gigabit Ethernet Applications Data Sheet

The 1000BASE-EX SFP operates on standard single-mode fiber-optic link spans of up to 40 km in length. A 5- dB inline optical attenuator should be inserted between the fiber-optic cable and the



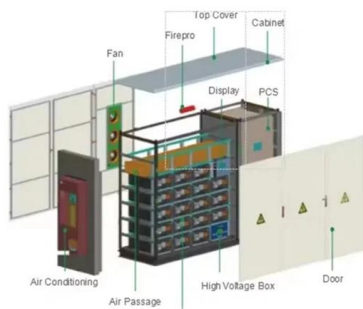
FS , AI Infrastructure, Data Center, Enterprise

As a worldwide provider of high-performance network products and solutions, FS offers switches, optical transceivers, cabling systems, and management software



SFP vs. SFP+ Modules: Key Differences and How to

These modules are crucial for facilitating rapid and long-distance network connections using fiber optic technology. Essential in contemporary



Small Form Factor Pluggable (SFP) Modules: Guide

Answer first: An SFP (Small Form Factor Pluggable) module is a hot-pluggable network transceiver that lets switches, routers, and servers link to fiber

SFP Modules: The Key to Efficient Fiber Optic Connectivity

Explore the world of SFP modules - the compact, flexible, and high-speed solution for data transmission in fiber optic networks.



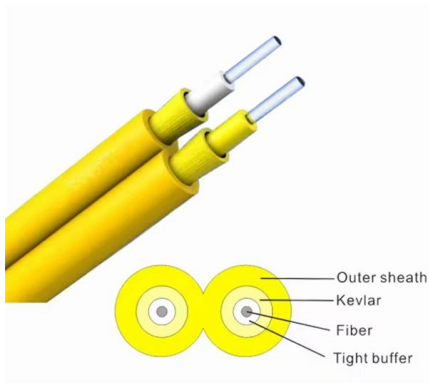
SFP+ SR, LR, and ER Modules: Your Definitive Guide to Choosing

High-speed data transmission in enterprise and data center networks is driven by 10G optical modules. Choosing the proper SFP+ module, whether it be SR, LR, or ER, can have



Cisco SFP vs SFP+ vs QSFP-28 vs OSFP: Guide for Enterprise and

Learn the differences between Cisco SFP, SFP+, QSFP-28, and OSFP optical transceivers. Explore technical comparisons, deployment scenarios, and procurement guidance for enterprise and data

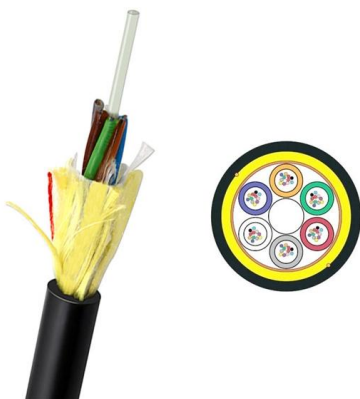


Home

Tellabs® Optical LAN (OLAN) is a simple, scalable, stable and secure fiber-based enterprise network solution. It simplifies the design, build and

Fiber Optic Cabling Solutions for Enterprise Data Centers

Provide high-density cabling in limited space and meet the needs of future business expansion anytime and anywhere



10G SFP+ Modules for Enterprise Data Centers: Buy Guide

This article explores the essential considerations, performance characteristics, and best practices for selecting and deploying 10G SFP+ modules in enterprise data centers.



Fiber Optic & SFP Transceiver Modules for Data Centers

Explore SFP, SFP+, and fiber optic transceiver modules from CloudPhotonix. High-speed, hot-pluggable optical solutions for telecom & data centers.



Contact Us

For datasheets, pricing, or custom high-speed optical interconnect solutions, please visit:
<https://www.syropy.com.pl>