

Fiber Optic Channel Commissioning Scheme





Fiber Optic Channel Commissioning Scheme



Tata Steel Technical Standard S2651001 Supply, Erection and

Tata Steel Technical Standard S2651001 Supply, Erection and commissioning of network infrastructure cabling (fiber optics & copper) Tata Steel Technical Standard S2651001 Supply, Erection and

Fiber Optic Network Design & Deployment Guide

As the world races toward faster, more reliable digital communication, Fiber optic networks stand at the core of telecom innovation. Fiber optics bandwidth,



Method Statement for Structured Cabling , PDF , Optical

This document provides a method statement for installing a structured cabling system. It outlines the project name and scope, which includes designing,



Fiber Optic Patch Cables: The Complete 2026 Buyer's Guide

Confused by LC, SC, MPO, UPC, and APC? This complete fiber optic patch cable guide covers connector types, single-mode vs multimode, insertion loss specs, and how to choose the right



Structured Telephone & Data Cabling System Testing

Backbone multimode fiber cabling shall be tested at both 850 nm and 1300 nm (or 1310 and 1550 nm for single mode) in both directions. Single mode testing shall



Technical Specification of Fibre Optic Terminal Equipment And

1.2.1 Description The proposed fibre optic communication network shall support the voice & data communication requirements of RTUs and the SCADA/EMS system. The communication system



A Guide to Fiber Optic Network Planning and Design

Achieving Excellence in Fiber Optic Network Planning and Design: Best Practices and Strategies Discover innovative approaches to fiber optic





Fiber Channel Network

A Fiber Channel Network is a structured, high-performance network composed of bidirectional point-to-point serial data channels, designed for transmitting data using single- and



Structured Cabling Installation Guide , PDF , Cable

This document is a checklist for installing structured cabling systems, including copper and fiber optic cables. It covers project details, installation of twisted pair

Fibre channel, fiber channel, layers, ports, fc topologies

Fibre channel topologies depicts how nodes or devices are connecting together. These include Point-to-Point, Arbitrated loop and Fabric. Fibre channel transmits data serially, this means bit by bit. That's



Testing & Commissioning - FiberLan

Commissioning a fiber-optic local area network (LAN) involves a series of steps that are taken to prove that the system meets the specified requirements. Below are the list of important procedures that we



Commissioning a fiber-optic LAN

Often called "proof of performance" or "acceptance testing," the commissioning procedure usually covers specific parameters of the optical fiber and components,

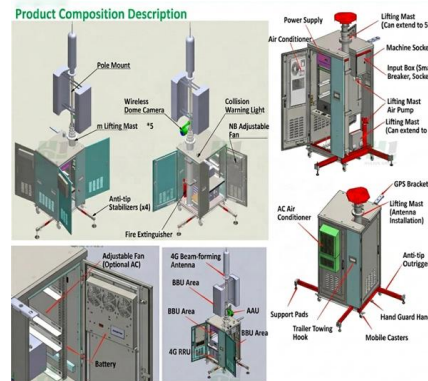


Fiber tests in PON networks: commissioning and maintenance

Although the transition technologies VDSL2 with super vectoring (profile 35b) and G.fast (up to pro-file 212a) can easily cover current broadband needs over a wide area, all those who want to be ready for

Fibre Channel Connectivity

Fibre Channel standards define the links and protocols that form storage area networks (SANs). The Fibre Channel protocol runs on Fibre Channel, Ethernet and long haul (optical transport) links. Each



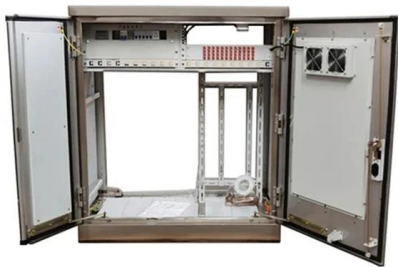
IEC61850_IBS_Startup_EN.BOOK

Ring or star? The boundaries become blurred. As a ring connection, you should give preference to a fiber-optic cable. When the switches work as amplifiers, you can easily realize connections over



Structured Cabling System SCS Testing and

Below are brief guidelines that can be followed or considered for testing & commissioning of structured cabling system including voice, telephone and data



Certification of new Fiber Optic cabling is necessary to ensure the intended application. To validate correct installation and functionality of all glass fiber connections, the theoretical fiber attenuation

Fibre Channel

The INCITS/Fibre Channel Technical Committee is responsible for the development of the Fibre Channel (FC) standards. These standards specify the following: Other technical work deemed



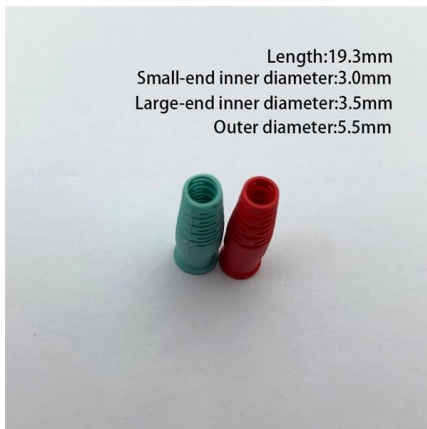
FTTH Handbook - edition 9 , FTTH Council

Discover the updated FTTH Handbook, Edition 9 - your complete guide to fibre network planning, design, build, and operation, now with new insights on aerial



The FOA Reference For Fiber Optics

Topic: Fiber Optic Table of Contents: The FOA Reference Guide To Fiber Optics Installation Checklist Planning for the installation is a critical phase of any project as it involves coordinating activities of

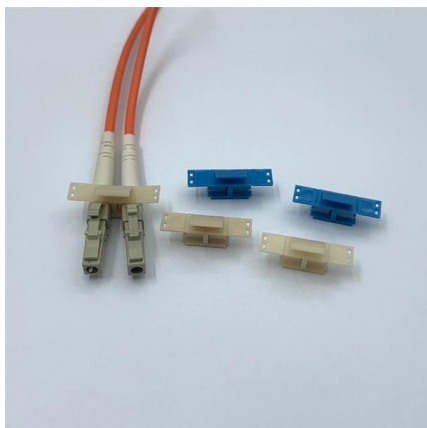
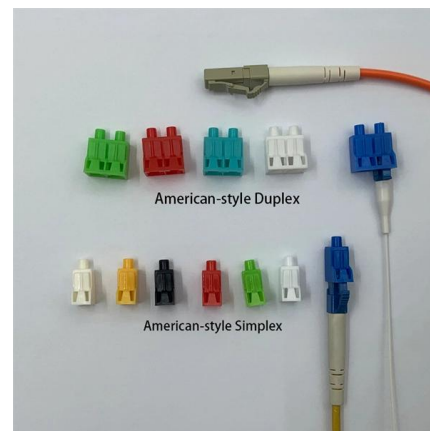


How to build a fibre network

Between now and then, Openreach will move tranches of exchanges into a 'stop sell' position when 75% of addresses in an exchange area can get full fibre broadband (also known as Fibre to the Premises)

Commissioning cabling infrastructure for OT networks

Three additional ISO & IEC standards that have particularly useful guidance and specifications for commissioning are: ISO/IEC 14763-2 - defines planning, installation, and



Method of Testing & Commissioning of Structured

Method of Testing & Commissioning of Structured Cabling System The purpose of this method statement shall be to outline the sequence and method of Testing &



METHOD OF STATEMENT FOR STRUCTURED AND FIBER OPTIC

MISSIONING OF THE SYSTEM GENERAL The Site Supervisor will study the new cable route (external and internal building) for structured cabling/fiber optic cabling as per construction drawings . Upon



REINFORCED VIRGIN PVC TRUNKING

Superior Crush Resistance



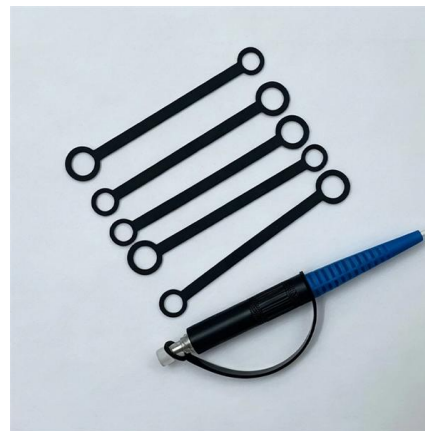
	37.6MPA Tensile Strength		2856MPA Elastic Modulus
	9.8KJ/M² Impact Strength		1.54G/CM Density

Inside a Modern Fibre Channel Architecture - Part 1

Fabric model Generic Services Fibre Channel is a bi-directional, point-to-point, serial data communication channel, architected for high performance Fibre Channel may be implemented

Armoured Fibre Optic Cable & FODP

1.0 Description a) This is a reference technical specification for survey, planning, co-ordination with other suppliers' equipment, design, Engineering, supply at site including transportation, laying, installation,



02

High Quality Material

||

High hardness to resist external impact, Good Shaping Performance Good Look and Anti-rust



Fibre Channel

Fibre Channel typically runs on optical fiber cables within and between data centers, but can also run on copper cabling. Supported data rates include 1, 2, 4, 8,



What is Fibre Channel? History, layers, components and

Explore Fibre Channel, a high-speed networking technology for transmitting data to SANs at rates of up to 128 Gbps, design, standards, benefits,



Contact Us

For datasheets, pricing, or custom high-speed optical interconnect solutions, please visit:

<https://www.syropy.com.pl>