

# **Fiber Optic Cable Routing in Transmission Cabinets**





## Overview

---

This document discusses the Panduit recommended Best Practices for handling, installing, routing and securing Panduit MTP\* Interconnect Cable Assemblies as they transition from either overhead pathways (Panduit FiberRunner™) or under floor pathways (Panduit FiberRunner™ or similar) to either. New from Amphenol Network Solutions, FlexTrax provides an ideal combination of flexibility, ease of installation, and most importantly, superior fiber protection for this. Fiber distribution hardware manages each fiber and connection point that is associated with active electronics. It includes first determining the type of communication system (s) which will be carried over the network, the geographic layout (premises, campus, outside).



## Fiber Optic Cable Routing in Transmission Cabinets

---



### Fiber Optic Network Design & Deployment Guide

As the world races toward faster, more reliable digital communication, Fiber optic networks stand at the core of telecom innovation. Fiber optics bandwidth,

### FlexTrax®-- Route Fiber to Cabinets and Racks

Users simply shape FlexTrax as required to create secure drops from overhead trough into cabinets or racks. Once fiber is placed within FlexTrax, attached gates enclose and protect fiber within the cable



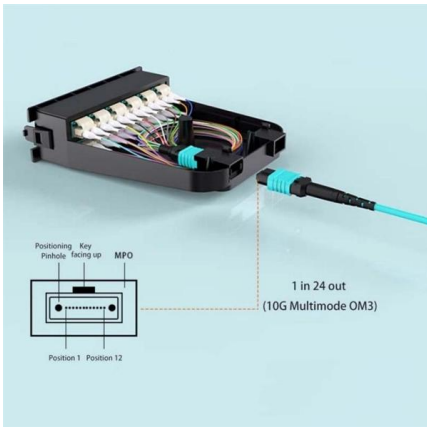
### Indoor and Outdoor Fiber Optic Cable Installation: Key

Fiber optic cables inside rack cabinets should be neatly organized to ensure efficient management and long-term reliability. Use fiber patch panels,



### Fiber Optic Cable Installation: How To Properly Install It

A comprehensive guide to fiber optic installation - everything you need to know about fiber optic cabling for your network

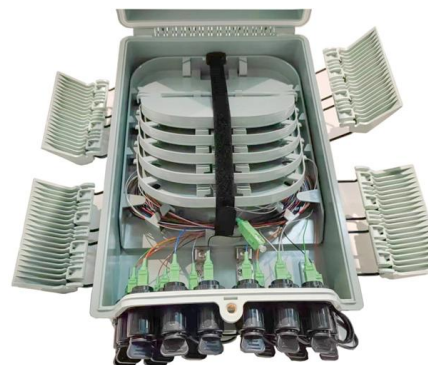


## How To Do Beautiful Structured Cabling In A Data Center

For cable routing across multiple network cabinets, it's necessary to pass through the upper or lower cable holes of the cabinets for proper placement.

### 1U 64-Fiber MTP/MPO to LC Sliding Patch Panel with 4 × 16-Fiber

Rayoptic 1U 64-fiber MTP/MPO to LC sliding patch panel features 4 × 16-fiber cassette modules, 32 LC duplex ports, rear MTP/MPO ports, and a sliding tray for high-density data center



## A Guide to Fiber Optic Network Planning and Design

Achieving Excellence in Fiber Optic Network Planning and Design: Best Practices and Strategies Discover innovative approaches to fiber optic





## The Complete Guide to Cable Management: Organising

Effective cable management is essential for maintaining a well-organised and efficient network infrastructure. Proper cable management not only

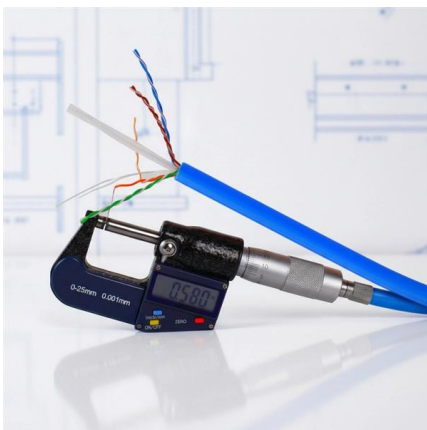


### 15 BEST PRACTICES FOR DATA CENTER FIBER-OPTIC CABLING

Optimize data center cable installation with this FREE guide from CABLExpress! Learn best practices for labeling, service loops, and more. Download now!

### Fiber Optic Cable Installation Best Practices: Ensuring

Introduction Fiber optic cable installation is a critical process that impacts the performance and reliability of the entire network. Whether you're



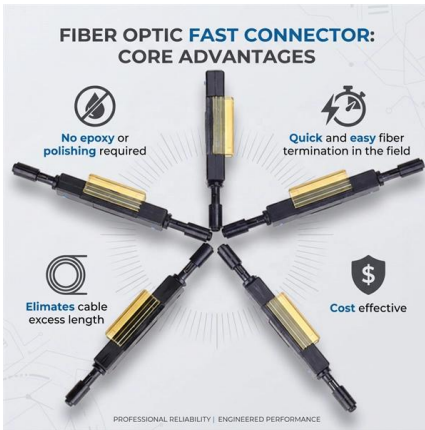
### Best Practices for Designing Indoor Fiber Optic Routing in 2025

Ensure safe, efficient indoor Fiber Optic Routing in 2025 with expert design tips, compliance standards, and future-ready installation practices.



## InstallGuide

Fiber optic cables may contain multimode fibers, singlemode fibers or a combination of the two, in which case it is referred to as a "hybrid" cable. The type of cable shall be positively identified and, if hybrid,



## Microsoft Word

The Leviton Fiber Raceway System (FRS) provides a robust solution to route, protect, and store fiber cabling in data centers, head ends, telecom rooms, and wiring closets.

## Fiber Optic Cable Installation and Handling Instructions

The information contained in this manual should serve as a guide to proper handling, installing, testing, and for troubleshooting problems with fiber optic cables.



## Fiber-optic communication

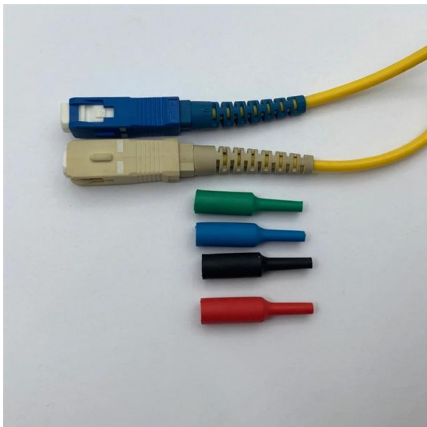
The transmission distance of a fiber-optic communication system has traditionally been limited by fiber attenuation and by fiber distortion. By using optoelectronic

## Fiber Optic Installation: Best Practices for



## Cable Routing

Upon completing the cable routing phase, the next critical step in fiber optic installation is mastering termination techniques. This phase involves the



## The elements of fiber cable management

The four fundamental elements of fiber cable management - physical and environmental protection, circuit separation, cable routing paths with bend radius control, accessibility and identification - will

## How to Arrange Optical Fiber Patch Cords in the

Untie the fiber patch cable tail band, expand the patch cable tails, and tie the two optical fiber patch cords together with electrical tape once fully



## Best Practices for Fiber Optic Cabling in Data Centers

Discover the best practices for fiber optic cabling in data centers, including cable management, labeling, and testing. Learn how to optimize



## Fiber Distribution Architecture

The Centrix(TM) System is a high-density fiber management system that provides a balance of industry-leading density with innovative jumper routing. The system can be deployed in multiple applications

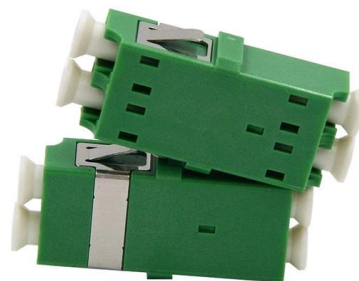


## Foss FIBER RACKS AND CABINETS

FOSS RACKS AND CABINETS Foss racks and cabinets are designed for durability, easy transportation, installation, scaling and management. These multi-purpose

## Weunion Fiber Distribution Cabinets: High-Capacity, IP65-Rated

3. Fiber Optic Cross-Connect Cabinets Designed for backbone-to-access network transitions, Weunion's cross-connect cabinets offer: High-Capacity Splitting: Models like WU-ODC



## The FOA Reference For Fiber Optics

Fiber Optic Network Design Jump To: The Communications System Cabling Design Choosing Transmission Equipment Planning The Route Choosing Components



## How to Install Fiber Optic Cable: Step-by-Step Guide

Learn how to install fiber optic cable with Network Drops' easy step-by-step guide. Follow the process for quick and effective results.

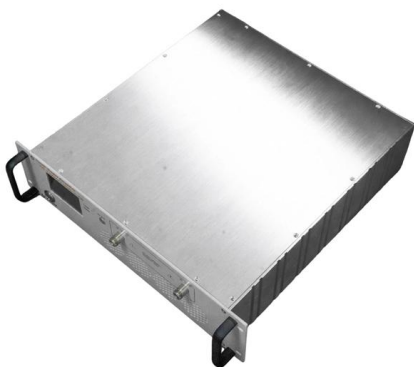


### PN535

Once the fiber optic cables have transitioned from the FiberRunner™ into the rack or cabinet, it is critical to properly manage the cable routing prior to entry to the rack-mounted fiber enclosures or

### The elements of fiber cable management

Wherever fiber is used, routing paths must be clearly defined and easy to follow - to the point where the technician has no other option than to route the cables properly.



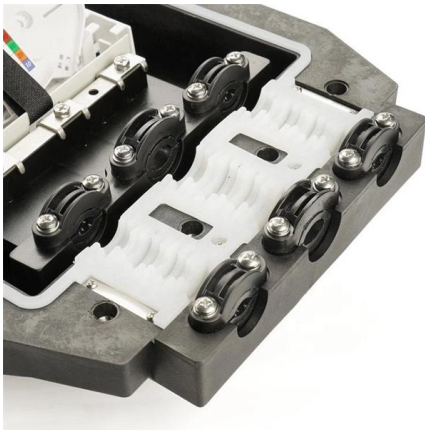
### The FOA Reference For Fiber Optics

Some applications may require installing fiber optic cables inside conduit, which requires care to minimize bends, provide intermediate pulls to limit pulling force or



## 15 BEST PRACTICES FOR DATA CENTER FIBER-OPTIC CABLING

For fiber optic cable, use horizontal finger style with front cover cable managers in a 1U or 2U footprint. Consider wide body cabinets (wider than 24 inches) along with vertical cable managers (4", 6" or 12")



### How to Run Fiber Optic Cable in Your House

Complete guide to safely running internal fiber optic cable. Learn the methods for a high-performance, future-proof home network.

## Contact Us

---

For datasheets, pricing, or custom high-speed optical interconnect solutions, please visit:  
<https://www.syropy.com.pl>