

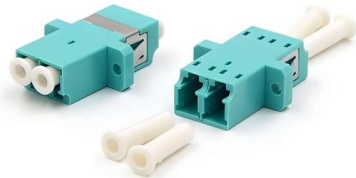
Fiber Optic Cable Junction Box Hanging on Power Pole





Fiber Optic Cable Junction Box Hanging on Power Pole

A Step-by-Step Guide to Fiber Optic Cable Installation



aerial fiber optic cable installation Aerial fiber optic cable installation involves suspending fiber optic cables on poles or towers,

CFX ITS Inspection Reference & Training Manual

Electrical pull box - 500 ft Fiber optic pull box - 2,500 ft Common locations where pull boxes are utilized include conduit end points, where conduit changes direction, beginning and end of conduit paths



How to Install Fiber Optic Cables

Determining Fiber Optic Availability To ascertain the availability of fiber optic service in your area, it is necessary to contact your local phone company. In

Fiber Terminal Box vs Junction Box: Key Differences

Compare fiber terminal box vs junction box in functions, applications, and installation. Learn which suits FTTH fiber vs electrical wiring.



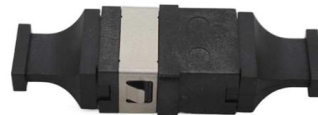
Fiber Junction Box: Your Guide to Installation, Types,

Discover the world of Fiber Junction Boxes! Explore installation tips, different types, and the advantages they offer. Get expert insights for seamless



Fiber Optic Cable drop Install +metal pole attachment

short drop to a local church. couldn't finish the drop because the 3/4" mast wouldn't fit the drop with existing lines in place.will likely be back to finish



The FOA Reference For Fiber Optics

Telephone companies and the Internet (which started on the telco backbone) all use lots of fiber optics, all of which is singlemode and most of which is outside



Which Fiber Optic Junction Box is Best?

When it comes to fiber optic junction boxes, a variety of options are available. Usually, a common question asked by customers is which box is best for their application.



How Do You Install an OPGW Cable Joint Box?

Learn the essential steps for installing an OPGW cable joint box, including preparation, mounting, fiber splicing, and sealing techniques, to ensure reliable

Fiber Termination Boxes: A Beginner's Guide to

Cable Entry and Management: Carefully route the incoming and outgoing fiber optic cables through designated entry points, utilizing cable



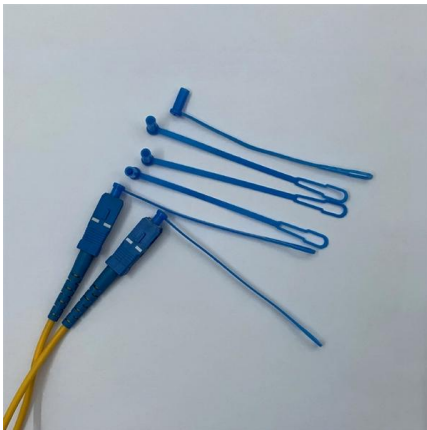
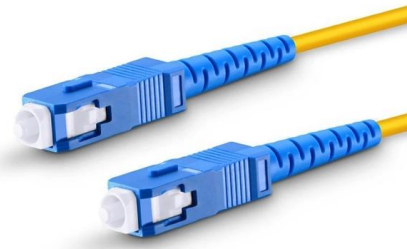
The FOA Reference For Fiber Optics -Outside Plant

Deploying fiber above ground on poles or towers removes the need for underground digging and is particularly useful when the ground is uneven, rocky or both. Aerial



Fiber Optics For Electrical Utilities

Utilities build fiber optic networks in similar ways that others build them, aerial and underground, but they also mix aerial cables in their power distribution cables,



Fiber Optic Junction Box Installation Guide

Use only shielded cable. Temperatures at the cable entry can reach 80° C. Selection of cable must be appropriate for the ambient temperature range in which the product is used.

My ISP's Technicians left the Fiber Junction Box (Splitter) in

My ISP uses an aerial fiber network and have a Fiber Junction box at each pole, from where they connect to their customer's homes. Each Fiber Junction Box acts as a splitter where at most 8



Universal pole assembly hooks with banding tie YK 14, for aerial fiber

You are watching the video of fiber cable anchor assembly bracket with banding tie YK-14. The pole assembly was developed to provide anchoring points for clamps to tension fiber optic cable during



What are the black canisters mounted low on power poles?

Those are pole mounted weather-proof housings for telecom equipment. They could have different things inside but one use is for T1 repeaters



Openreach and Fibre via overhead cable/telegraph pole

My current copper cable is flown in the other side of the house and I don't fancy a new fibre cable being clipped horizontally along the front of the house simply because the existing hook is

Is this what fiber looks like on a utility pole? :

The Windstream fiber on our pole looks just like Coax strung from pole to pole but



Fiber Terminal Box VS. Junction Box: What is the

Imagine your fiber optic network as a high-speed information highway. Just like highways require exits, interchanges, and connections to reach homes

FIBER OPTIC CONSTRUCTION STANDARDS

Fiber optic cable sequential numbers are required at each pole location and vault wall.



Sequential numbers will identify conduit length, and slack left in vaults and at poles.



Overhead Fiber Optic Cable Installation Requirements

Overhead fiber optic cable is an optical cable installed on poles. One of the most advantage is that it can save costs and shorten the construction period.

Big Coils of Extra Lines Are Hanging Off Some Power

Now, imagine you just finished stringing one of these cables only to have a drunken, relevance-starved Charlie Sheen drive his Hummer into a utility



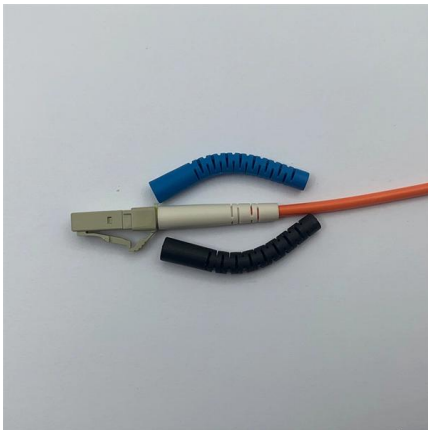
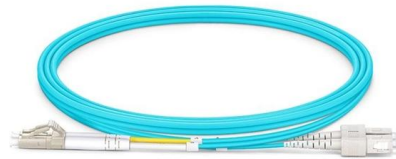
What Is an Optical Junction Box and Its Benefits?

Conclusion Understanding the role and benefits of an optical junction box is fundamental for anyone looking to set up or enhance a fiber optic network. Following the steps outlined above will



Mixing Fiber and Power Lines in Aerial Fiber Deployments

One way round this is to install aerial fiber cables close to power lines, such as on mixed use poles which also carry electricity.



Fiber Optic Pole royalty-free images

Internet box or splitter box with high-speed fiber optic cable hanging on a metal electric pole. Silhouette of a utility worker climbing a pole and handling fiber optic

Fiber Optic Pole Brackets & Hooks

Fiber optic cable pole brackets and hooks refer to the equipment used for mounting and securing fiber optic cables on utility poles or other vertical structures. These



Making Fiber Connections a Simple Operation

Operation reminds me a bit of what it can be like wiring up a fiber/power junction box on a cell tower. The junction box is where a hybrid fiber



Report Damage to a Telephone Pole, Wire or Cable

Contact us to report damage to a telephone pole, wires, or cables. You can request a CenturyLink pole or terminal be moved. Here's what you'll need to tell us when



Contact Us

For datasheets, pricing, or custom high-speed optical interconnect solutions, please visit:
<https://www.syropy.com.pl>