

# **Fiber Distribution Box Waterproof Connector**





## Fiber Distribution Box Waterproof Connector

---



### Discover Europe's digital cultural heritage , Europeana

Hier sollte eine Beschreibung angezeigt werden,  
diese Seite lässt dies jedoch nicht zu.

### IP68 MST Box -Outdoor Waterproof Fiber Distribution

The IP68 Waterproof 16 Ports Multiport Service  
Terminal Box is designed for high-density fiber  
optic distribution in FTTH and  
telecommunication



### 16 ports FTTH Fiber Splitter Distribution Box Price

16 ports FTTH Fiber Optic Distribution Box/Fiber  
access terminal box (FAT)/optical termination  
box (OTB) Fiber termination box (FTB) Outdoor



### How to Use Fiber Distribution Box: A Comprehensive

How to Use Fiber Distribution Box: A  
Comprehensive Guide Fiber distribution boxes  
represent a critical component in modern  
telecommunications



### Amazon : Fiber Distribution Box

Fiber Optic Distribution Box, 12 Port Wall Mount Enclosure with 12 LC Duplex Adapters, Singlemode, FTTH, IP65 Waterproof Outdoor/Indoor Use - 9.45" x 8.66" x 2.56"



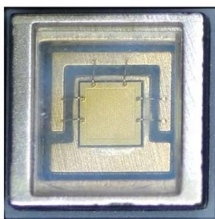
### IP65 Waterproof Fiber Optical Distribution Box 24 Port

Optimize your fiber optic setups with our 24 Port Fiber Distribution Box, featuring a



### FTTA Waterproof MTP-12 to 6 x LC Duplex OS2 Fiber

The fiber distribution box is a fast-connect enclosure that is sealed mechanically. It offers a 12-fiber MTP adapter on the rear of the units routed to duplex LC





### **FTTH Distribution Box With 8 Waterproof Mini SC**

The fiber distribution box is designed to realize the connection between the feeder cable and drop cable in the FTTH network systems. It offers the functions of



### **8 Cores FTTH fiber optical terminal box Fiber**

It integrates fiber splicing, splitting, distribution, storage, and cable connection in one solid protection box. Remark: Compatible with Corning + HuaWei + waterproof



### **Amazon : Fiber Distribution Box**

ETS Fiber Optic Distribution Box 4 Core - IP65 Waterproof, UV Resistant, FTTH, FTTx, Wall/Pole Mountable, Industrial Networks, Fusion Splicing, SC/LC/FC Adapters, Cable Management Add to cart



### **Black Waterproof SC Fiber Optic Distribution Box With Optitap**

Port into the end and leakage design, no need to open the box, easy construction. Box can be installed by way of wall-mounted or poled-mounted, suitable for both indoor and outdoor use.



### Waterproof IP67 Fiber Optic Distribution Box

Waterproof ip67 Fiber Optic Distribution Box  
LE-1309 FIBER OPTIC TERMINATION BOX Fiber optic termination box is suitable for the wiring connection of optical



### Fiber Domes, Boxes and Enclosures

Outdoor Fiber Boxes With the changing seasons presenting new challenges for your fiber optic network to overcome, Primus Cable offers Outdoor Fiber Distribution Boxes that are designed and

### FTTH Terminal Box Waterproof IP66 Outdoor 12F Core

The fiber optic terminal box can hold up to 12 subscribers. It is used as a termination point for the feeder cable to connect to the drop cable in the FTTx network



### 8 Core Outdoor Waterproof IP65 Fiber Optic Distribution

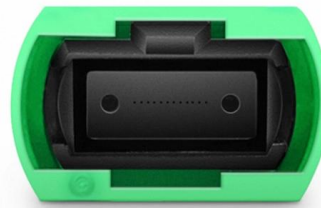
8 Core Fiber Optic Distribution Box Dawnergy's fiber optic distribution boxes are widely used as a termination point for the feeder cable to connect with the drop





### 16 Core Fast Pre Connected Fiber Optic Distribution Box

DA-FDB-16I-PA-1 Fiber Optic Distribution Box  
Dawnergy's DA-FDB-16I-PA-1 fiber optic distribution box is used as a termination point for the feeder cable to



### Outdoor Rated Fiber Distribution Boxes FDU's - Primus

Outdoor Fiber Distribution Boxes With the changing seasons presenting new challenges for your fiber optic network to overcome, Primus Cable offers Outdoor

### 16 Port Fiber Optic Distribution Box For Cassette PLC

The 16 port fiber distribution box for 1x16 mini splitter, which is perfect for FTTH, FTTB solution, capacity 16 cores, IP65 for outdoor use.



### 16 port Indoor / Outdoor Waterproof Fast Connection

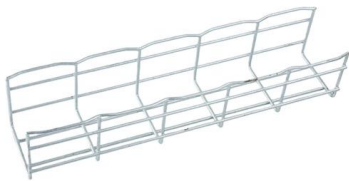
This 8 port Indoor / Outdoor Wall / Pole Mounted FTTH Optical Fiber Splitter Distribution Box with Waterproof Fast Connection is used for wall mounted or

### Best Outdoor Water-proof FTTH



## Distribution Fiber Optic Termination

Explore the details, specifications and video of our Outdoor Water-proof FTTH Distribution Terminal Box, and order high-quality Outdoor Water-proof FTTH Distribution Terminal Box from our factory directly



## 8 port FTTH Fiber Splitter Distribution Box-/FAT/OTB/FTB

This 8 port Indoor / Outdoor Wall / Pole Mounted FTTH Optical Fiber Splitter Distribution Box with Waterproof Fast Connection is used for wall

## Fiber Optic Termination Box

The fiber distribution box is widely used as a termination point for the feeder cable to connect with drop cable. The fiber splicing, splitting, distribution can be done in this



## High quality FTTH junction box, 48 core IP55 fiber optic

Light and compact, it's ideal for connecting and protecting FTTH fiber cables. The FDB-48 Series 48-port Fiber Distribution Box is suitable for FTTH projects and



### **Outdoor Fiber Termination Box IP65, 4 Cores Splice**

The 1 in 1 Out 4 core fiber termination box is waterproof rated IP65, can be used in indoor and outdoor wall mount applications.

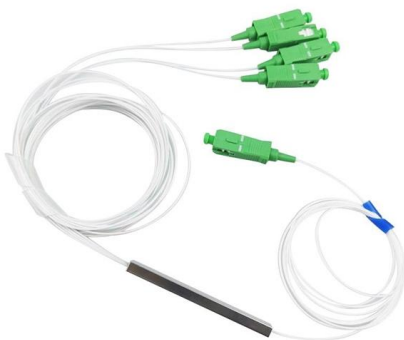


### **FTTA Waterproof MTP-12 to 6 x LC Duplex OS2 Fiber Optical**

Yes, to achieve full waterproof performance, it must be paired with patch cords featuring IP67-rated connectors. You can choose the custom cables at #70220 and select IP67-rated connectors under

### **Waterproof Outdoor 16 Core Fiber Optic Distribution Box**

Waterproof Outdoor 16 Core Fiber Optic Distribution Box Product Model SP-1609-16D Product Description SP-1609-16 is used as a termination point for the feeder



### **FTTH Outdoor Waterproof IP68 16 Core Fibers Optic**

FTTH outdoor waterproof IP68 16 Core fibers optic distribution box mini fiber optic terminal box for Pre-connectorized Drop CableFLK-AFAT-336 Fiber Access



## Waterproof IP68 1 in/8 Ports out Terminal Junction Box

With IP68 waterproof design, this junction box provides superior protection against harsh environmental conditions, making it ideal for a wide range of FTTx



### High-quality ceramic ferrule



## Waterproof 16 Port Fiber Distribution Box with a Mid

With an IP65-rated waterproof design, This enclosure is suitable for outdoor wall-mounted or pole-mounted installations, providing a reliable solution for fiber splice

## Contact Us

---

For datasheets, pricing, or custom high-speed optical interconnect solutions, please visit:  
<https://www.syropy.com.pl>