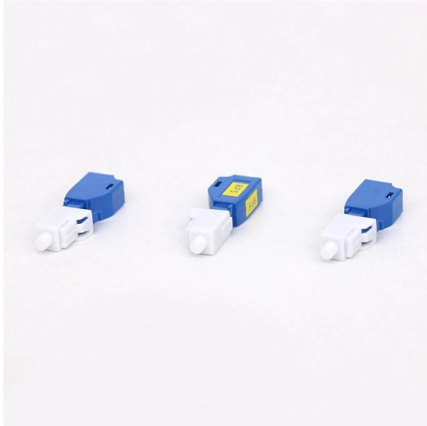


Fault Analysis Diagram of Power Relay Protection





Fault Analysis Diagram of Power Relay Protection



Fault diagnosis of intelligent substation relay protection

This study focuses on the fault diagnosis of an intelligent substation relay protection system based on Transformer architecture and migration training model.

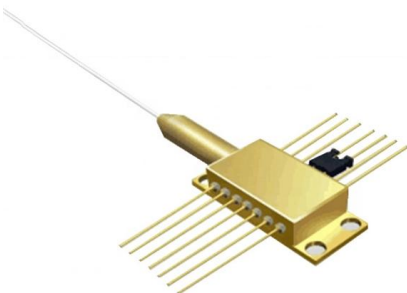
Research on Fault Diagnosis Method for Relay Protection Based on

With the development of smart grids and automation technology, the role of relay protection systems in the power system is becoming increasingly important. However, traditional fault diagnosis methods



Fault diagnosis of power system using relay protection setting values

Abstract: This paper proposed a method for modelling of power system fault diagnosis process.



Research on the analysis method of power system relay protection

The experimental results show that this method can effectively analyze the operation characteristics of power system relay protection, and can accurately check whether the relay



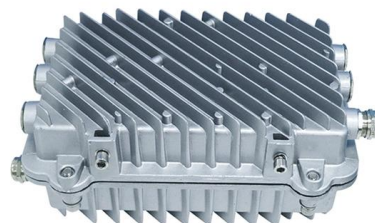
POWER SYSTEM PROTECTION

UNTI-I: Protective Relays: Introduction, Need for power system protection, effects of faults, evolution of protective relays, zones of protection, primary and backup protection, essential qualities of



Basics of Protective Relaying and Design Principles

Perform power system simulations of selected faults and observe how a given protection principle (overcurrent, impedance, and differential) works. Set the relays for a given power system. Verify by



The basics of power system protection that every

Introduction to relay protection Protection is the branch of electric power engineering concerned with the principles of design and operation of





Power System Protection & Relay Coordination Studies

To ensure that protective relays, circuit breakers, and other protection devices correctly and selectively isolate faults, minimizing damage to equipment and



Fault Analysis and Coordination in Power System

By layering primary and backup protections, engineers can ensure that the system is robust, resilient, and ready to handle a range of fault scenarios.

EEP

Relay Coordination Study: Calculation of the protective relays setting value to obtain selectivity. The scope of study involves calculating the settings for



Troubleshooting Protective Relay Operations Using Field Recorded

A UTOMATED analysis of field-recorded data captured by substations IEDs enables a new approach to troubleshooting power system protection operation [1,2]. The proposed approach utilizes field



LECTURE NOTES ON ELECTRICAL POWER SYSTEM PROTECTION

MODULE- I (10 Hrs) Introduction: Principle and need for protective schemes, Nature and causes of faults, Zones of protection, Primary and back-up protection, Basic principle of operation of protective



Basic protection relay knowledge

A fast and selective arc fault mitigation for air-insulated LV & MV switchgear and Relion protection and control relays and sensor technology protect staff and plant facilities for many years.



LECTURE NOTES ON ELECTRICAL POWER SYSTEM

For operation of CB a relay is necessary. A protective relay is a device that detects the faults and initiate the operation of the circuit breaker to isolate the defective element from the rest of the system.



Research on the analysis method of power system relay protection

The action characteristics of power system relay protection devices can well analyze whether the relevant actions are correct. An analysis method of relay protection action characteristics



Power System Protection

The protective relay on the other hand must be able to recognize an abnormal condition in the power system and take suitable steps so that there will be least possible disturbance to normal operation.



Protective Relay , Fundamental Requirements of

A Protective Relay is a device that detects the fault and initiates the operation of the circuit breaker to isolate the defective element from the rest of the system.



Fundamentals of Modern Protective Relaying

Protective Relays locate faults and trip circuit breakers to interrupt the flow of current into the defective component. This quick isolation provides the following benefits:



SCHEMATIC REPRESENTATION OF POWER SYSTEM RELAYING

Prepared by Working Group 15 Working Group Assignment presentation of protection and control relaying. The report will identify methodology behind these practices, present issues



Main Block Diagram of Protection Relay

This study examines the analysis of Asymmetrical fault, namely single-phase ground faults for e-jobsheet products based on Information and Communication



Power System Protection & Relay Coordination Studies

Power System Protection & Relay Coordination Studies Goal of the analysis: To ensure that protective relays, circuit breakers, and other protection devices

Practical handbook for relay protection engineers , EEP

All relevant information and circuit diagrams necessary for



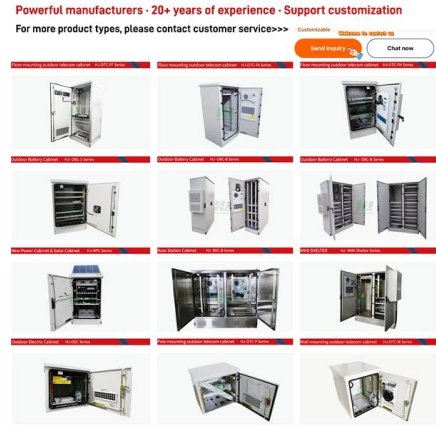
A SIMULINK DESIGN FOR FAULT ANALYSIS USING OVER CURRENT RELAY

Abstract-- Fault Analysis in Power Systems Using Over current Relays: A Simulation Based Study
Abstract: This thesis presents a comprehensive study on fault analysis in electrical power systems



Protection Basics

Ground fault protection for these systems is usually provided by residual protection, either calculated by relay or by external CT residual connection to IN input



The Role of Protection Relays in Power Systems and an

Protective relays are critical in power systems because they serve as decision-making devices that ensure the safe operation of power grid. They play a key role in power system protection.

Study of Three Phase Fault Analysis and Design of Universal Relay

Any circumstance or condition that causes voltage or current to abruptly increase to an exceptionally high amount is a fault. Power system failures are a serious problem since the high current that flows



Power System Fault Detection and Analysis Using Numerical Relay in

These faults are identified by Numerical relays which use IEDs [Intelligent Electronic Device]. The faults identified includes symmetrical and unsymmetrical faults in power system. Further in this project, we

POWER SYSTEM PROTECTION



Overcurrent Protection Relay: Overcurrent relays are widely used in power systems to protect against overloads and short circuits. They operate when the current exceeds a preset threshold, signaling a



Fault Diagnosis Analysis of Relay Protection System Based on

An improper functioning of systems related to stability of power systems and protective relays through circuit breakers remains a factor that jeopardizes the stability as well as the safety of power systems.

Power System Protection Coordination Study

This document discusses power system protection coordination with redundant relays. It presents the methodology used, which includes modeling the power



Contact Us

For datasheets, pricing, or custom high-speed optical interconnect solutions, please visit:
<https://www.syropy.com.pl>