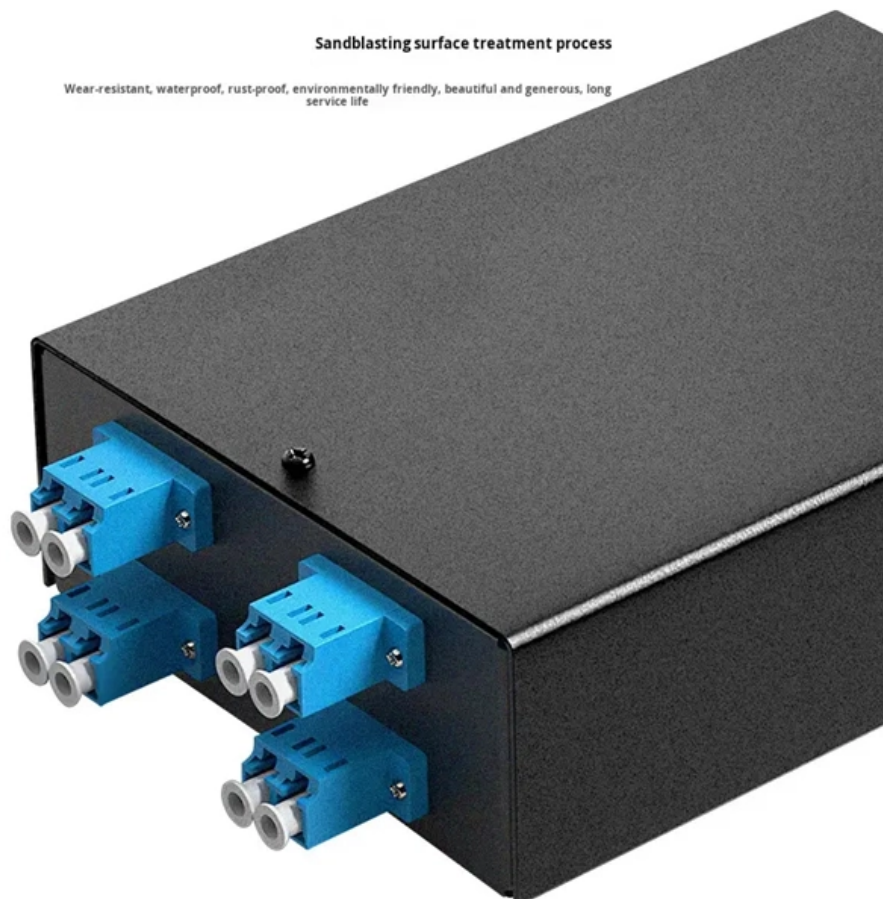


Fabrication of 90-degree vertical drop cable trays





Fabrication of 90-degree vertical drop cable trays



90 Degrees Bends in Cable Tray

In this video they are producing 90 degrees bend in steel cable tray. The learners fabricate (make) flat, internal and external 90 degree bend in steel (metal) cable tray.

How to make Cable tray VERTICAL OUTSIDE ELBOW 90°deg. (45

Vertical outside elbow 90°degree(45°-45°) 50mm depth cable tray. Practical tutorial 5



Steel Cable tray vertical outside bend, 90 Degree

The Perforated Vertical Outside Bend allows a 90° downward directional change in cable tray runs along vertical surfaces such as walls or columns. It is ideal for

How to make a 0-90° vertical angle for cable trays?

How to make a 0-90° vertical angle for cable trays? Elbow joint RVS is pushed inside the cable tray and attached with the included screw set. Elbow joint RVS can be



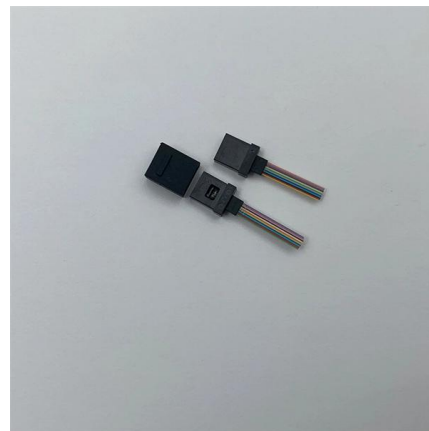
Make a 90 Gusset Bend in Cable Tray with Two Pieces

How to make a 90 electrical cable tray bend to measurement with a gusset of your choice. Great if you are new or just forgot how to do it, this easy to follow guide makes it so simple.



Trunking Cutting Techniques Guide , PDF

The document provides instructions for forming various bends and joints in electrical trunking and cable trays. It describes: 1) How to mark and cut a right-angle



Ladder Type Cable Tray Vertical Inside Bend

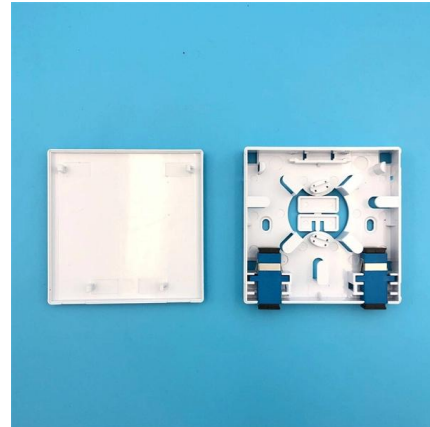
A ladder type cable tray vertical inside bend is a fitting used to redirect cables vertically downward within a ladder cable tray system, typically at a 90-degree angle. This accessory is ideal for managing cable





cable tray system

Straight sections of solid bottom cable trays constructed from single sheet of metal, providing excellent protection from external damage. They are used primarily for intrumental control,



How to make 90°degree (45°x2) Cable trays/Trunking (100mm X

90° Bend (45° x 2) Formula How to make 90°degree (45°x2) Cable trays/Trunking (100mm X 50mm) Practical tutorial 1

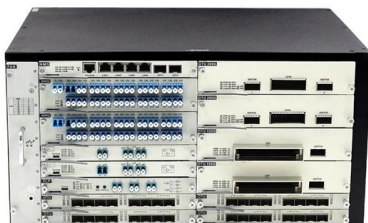
How to make a 0-90° vertical angle for cable trays?

Elbow joint RVS is pushed inside the cable tray and attached with the included screw set. Elbow joint RVS can be used to change a cable tray's



90° vertical bend, rising, 85 FT , OBO

90° rising vertical bend, for all cable tray types of 85 mm side height. The vertical bend is pushed over the end of the cable tray and screwed tight. Fastening





cable tray system

A cable tray system is an assembly of metallic cable tray sections and accessories, that forms a rigid structural system to support cables.



Configuration methods A - Quiklok tray - Conne

To form a horizontal cross, proceed in the same way as for a tee repeating the process on the other side of the main run. For 90 tee connections, cut side rails and attach at junction point using universal

Make a (45-45) 90 Gusset Bend in Electrical Cable Tray In One Piece

How to make a 90 electrical cable tray bend to measurement with a gusset of your choice using one piece of tray. Great if you are new or just forgot how to do it, this easy to follow guide makes



What is a Vertical Cable Tray?

What is a vertical cable tray? This guide explains its types (ladder, solid-bottom), benefits for safety & organization, and key applications in data



FRP Cable Tray 90 Degree Bend , Electrical Cable Tray

FRP Cable Tray 90 Degree Bend , Electrical Cable Tray Fabrication Work Horizontal FRP cable tray bend formula and installation . more



How to construct a flat 90° bend for Cable Trays

Construction of a flat 90° bend (G) The gusset is produced by cutting a piece of tray to the required size, removing 1 lip completely and bolting it to the

SHF630SVI9012 , Bend for cable tray , T& B Cable Tray , Wire & Cable

Catalog No. : SHF630SVI9012 Description: HDG 30INW 6IND IV-90 12INRAD SLD. UPC: 785055113195 Made or assembled in Canada. Hot-dipped galvanized steel fitting 6 inches side rail



Putting a 90 degree bend into Cable Tray

In this clip, David from EzyStrut has a length of EzyTray. He is going to show you how to use EzyStrut's ET/ET3/ET5 Radius plate to create a 90 degree bend in a piece of these cable trays



electrical #cable tray# making 90,° elbow #

Creating a 90-degree elbow in an electrical cable tray, often called a "fabricated" or "mitered" bend, involves cutting, bending, and fastening a straight section of tray.



B-Line series Cable Tray Design Considerations

As an industry leader in cable tray, Eaton offers one of the widest ranges of cable management solutions available in the market today with its B-Line series portfolio. With unmatched quality and service, we

Cable Tray 90 Degree Vertical Bend , 750 mm FRP Ladder Tray

How to 90 degree frp ladder cable tray bend. 45 Degree cable tray bend formula $\frac{1}{4} \times \text{Width Of Cable Tray}$ For 100 mm Cable Tray 45° Horizontal Bend $\frac{1}{4} \times 100 \text{ mm} = 78.5 \text{ mm}$ approx 80 mm 90 Degree



02

High Quality Material

||

High hardness to resist external impact, Good Shaping Performance Good Look and Anti-rust



How to create vertical cable tray in Revit

How to create a vertical cable tray in Revit to match the one shown in the image: This can be done with the free Revit MEP Fabrication extension. Use



ADVANCED S PRODUCTS | ASP 90° Down Cable Tray

Attach Cable Trays to Cable Tray Supports and connect to other Cable Trays with splice clamps to form continuous system. Adjust height of each Cable Tray Support and correct height if necessary.



A Guide to Installing and Supporting Electrical Cable Trays

A professional guide to installing electrical cable tray systems per NEC Article 392. Covers support, securing cables, and fill calculations.

Document DICOS

Hot dipped galvanized after fabrication (H.D.G.A.F.) (see ASTM A123) steel, aluminum, and stainless steel cable tray and fiberglass or other non-metallic cable tray can be stored outside without cover



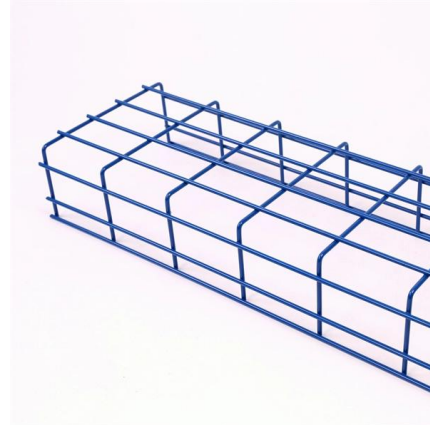
CABLE TRAY SYSTEMS GUIDE

Hubbell pre-formed fittings are time and cost effective solutions to installing 90 degree radius, Tees and Intersections, no cutting and no configuring. Hubbell offers Pre-galvanized or Black powder painted



90° Vertical Elbow , Cable Tray Systems , PUPCO

Discover our 90° Vertical Elbow for cable tray systems. Contact us today for availabilities and receive a quote. Fast shipping guaranteed.



HOW TO BEND 3 V

723 Share 61K views 5 years ago #90DEGREE #CABLETRAY #OF #3V -CUT #90DEGREE #OF #CABLETRAY How to bend 22.5 degree of cable tray 3 layer with the same distance and gap o HOW more

Best Practice Guide to Cable Ladder and Cable Tray Systems

This guide covers cable ladder systems, cable tray systems, channel support systems and associated supports intended for the support and accommodation of cables and possibly other electrical



Contact Us

For datasheets, pricing, or custom high-speed optical interconnect solutions, please visit:
<https://www.syropy.com.pl>