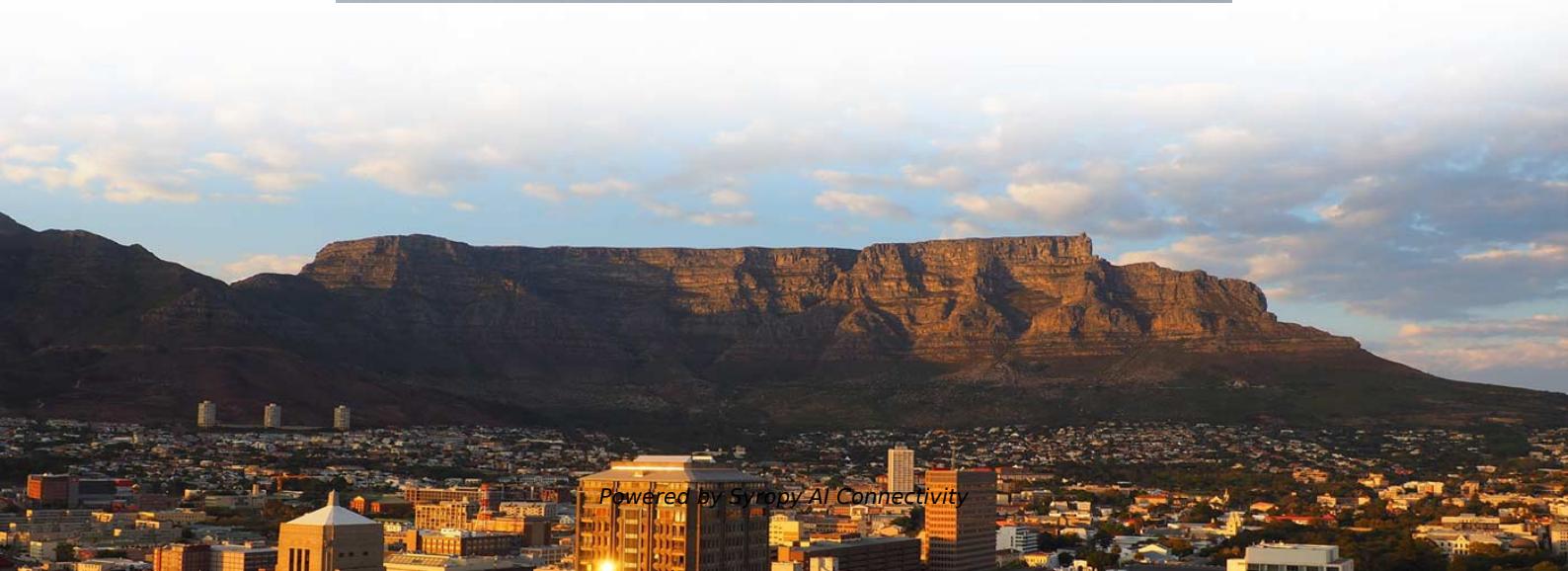
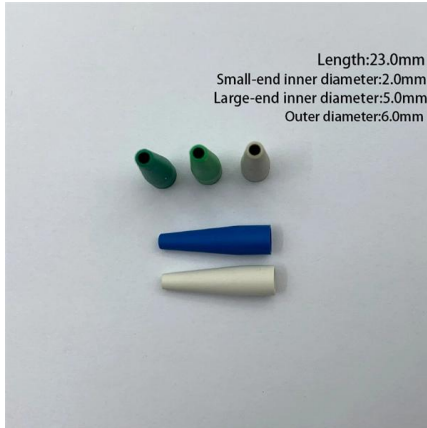


FPM-300 Optical Power Meter Disassembly





FPM-300 Optical Power Meter Disassembly



FPM-300 , Spec sheet , EXFO

The FPM-300 power meter is part of EXFO's new line of handheld units, which includes the FLS-300 light source and the FOT-300 optical loss test set.

FPM-300 Power Meter

The FPM-300 Power Meter is part of EXFO's new line of handheld units, which includes the FLS-300 Light Source and the FOT-300 Optical Loss Test Set.



Exfo FPM-300 Power Meter User Manual download pdf

Browse online or download EXFO FPM-300 Power Meter User Manual 40 pages. Measuring instruments Exfo FPM-300 Power Meter user manual pdf download free [1.95 MB]. Related for

EXFO FPM-300 Datasheet

The FPM-300 Power Meter is part of EXFO's new line of handheld units, which includes the FLS-300 Light Source and the FOT-300 Optical Loss Test Set.



EXFO FPM-300 Power Meter, FLS-300 Light Source,

Equipment should be normally protected against exposure to direct sunlight, precipitations and full wind pressure. 3 Getting Started Turning the Unit On and



Exfo Optital Power Meter FPM-300 (FPM-302/302X)

Model NO.: FPM-300 Number of Calibrated Wavelengths: 10 Wavelength Power Range: 10 to -60dB, 26 to -50dB Power Autonomy: 300 Hours Resolution (dB): 0.01f, 0.01 G Automatic Wavelength



EXFO Optical Power Meter-FPM-300 : Caspin Verna

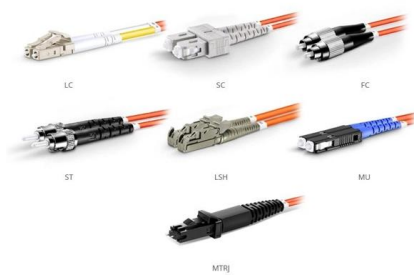
With a high-power option and 10 calibrated wavelengths, the FPM-300 is the most complete, yet simple power meter available. Combined with the FLS-300 or FOT-300 source units, which can transmit





EXFO FPM-300 Power Meter User Manual

Cleaning and Connecting Optical Fibers 4
 Measuring Power or Loss (FPM-300 and FOT-300)
 Nulling Electrical Offsets Defining a List of
 Favorite Wavelengths Referencing Your Power
 Meter to a Source



OM1 Fiber Patch Cable Family

EXFO FPM-FLS-300 User Guide

Your source can transmit a user-defined power value to compatible power meters (such as FPM-300) through the fiber. If the reference source is far from the power meter, you can connect your source to

1.5.4_FPM-300 Optical Power Meter_Vr1 Rev 1.1.ai

The FPM-300 series is a range of optical power meter covering spectral range from 800nm to 1600nm ; ideal for both single-mode and multi-mode fiber testing. FPM-300 optical power meter is light weight



FPM-300

FPM-300 - BRL Test buys sells and leases new used and refurbished EXFO FPM-300 Optical Power Meters. Repair and calibration services for the FPM-300 are available and warranted by our world



EXFO FPM-300 Power Meter manuals

Owner's manuals and user's guides for Measuring instruments EXFO FPM-300 Power Meter. We providing 3 pdf manuals EXFO FPM-300 Power Meter for download free by document types: User



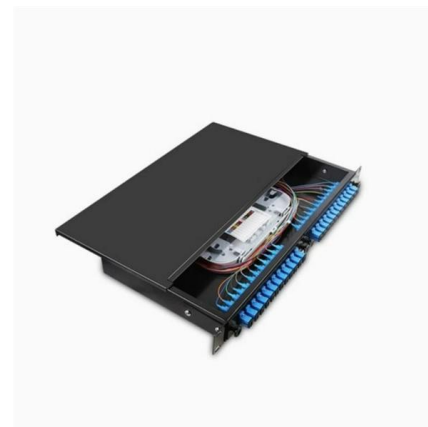
EXFO FPM-300 Power Meter User Manual

User guide o Read online or download PDF o EXFO FPM-300 Power Meter User Manual o EXFO Measuring instruments



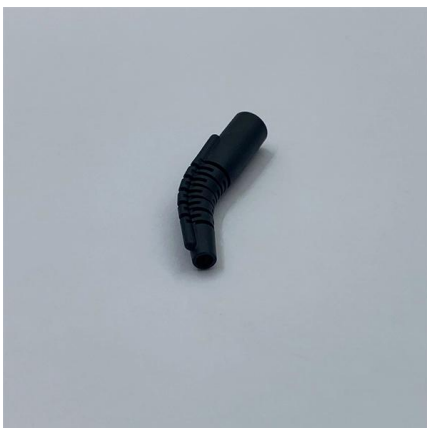
FPM-300/FLS-300/FOT-300

Your source can transmit a user-defined power value to compatible power meters (such as FOT-300 and FPM-300) through the fiber. If the reference source is far from the power meter, you can connect



FPM-300

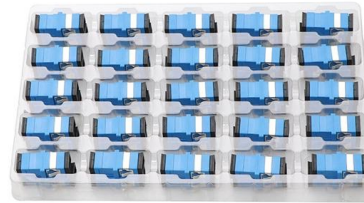
FPM-300 - EXFO FPM-300 Quotes on New, Reconditioned and Refurbished EXFO Optical Power Meters to buy sell lease and trade. Discounts on calibration and repairs up to 60% off.





FPM-300 , Discontinued product , EXFO

Optical Power Expert (PX1) - Connected optical power meter Power meter with Bluetooth connectivity, a wide touchscreen



EXFO FPM-300 Power Meter : Instruction Manual

To add wavelengths to the FAV list (or to remove them): 1. Hold down (power meter) a few seconds. The unit enters the FAV list and displays the current wavelength.

Power Meter FPM-300

Power autonomy of 300 hours Ergonomic, eye-catching handheld package Three-year warranty and recommended calibration interval, for dramatically reduced



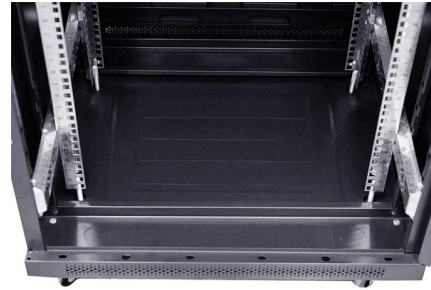
Power Meter FPM-300

Ergonomic, eye-catching handheld package The FPM-300 Power Meter is part of EXFO's new line of handheld units, which includes the FLS-300 Light Source and the FOT-300 Optical Loss Test Set.



EXFO FPM-300 for sale \$295.00 , In Stock

Exfo FPM-302X Fiber Optic Power Meter with high power Ge detector. 10 calibrated wavelengths. , EXFO FPM-300 and other used Optical Meters, Sources & Loss



EXFO

Hier sollte eine Beschreibung angezeigt werden, diese Seite lässt dies jedoch nicht zu.

EXFO FPM-300 User Manual

Your source can transmit a user-defined power value to compatible power meters (such as FOT-300 and FPM-300) through the fiber. If the reference source is far from the power meter, you can connect



EXFO FPM-300 User Manual

FPM-300/FLS-300/FOT-300 Power Meter/Light Source/Optical Loss Test Set User Guide Page 2



FPM-300 , Spec sheet , EXFO

EXFO's FPM-300 allows for the testing of passive optical networks (PONs) at 1310 nm, 1490 nm and 1550 nm, the three wavelengths recommended by the ITU-T (G.983.3) for PONs.

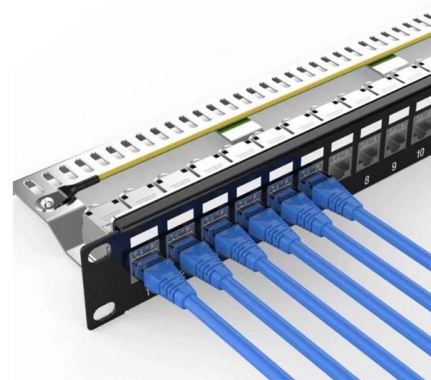


FTM-300 Power Meter

Ergonomic, eye-catching handheld package The FPM-300 Power Meter is part of EXFO's new line of handheld units, which includes the FLS-300 Light Source and the FOT-300 Optical Loss Test Set.

EXFO FPM-300 Specs

The FPM-300 Power Meter is part of EXFO's new line of handheld units, which includes the FLS-300 Light Source and the FOT-300 Optical Loss Test Set.



Contact Us

For datasheets, pricing, or custom high-speed optical interconnect solutions, please visit:

<https://www.syropy.com.pl>