

FC controller changed to USB interface





Overview

This is perhaps the most common issue when connecting to or flashing a flight controller in Betaflight Configurator. First thing to try would be a different USB cable, make sure it's a data cable, not a charging cable.



FC controller changed to USB interface

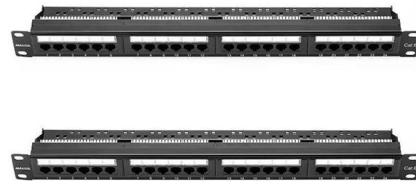


FC Controller GUI Manual

Connect the FC Series controller to a USB port with the provided USB cable. Detection of this new connected device (the first time) is signaled by a message in the bottom-right of the screen. For

Flight Controller Explained: How to Choose the Best FC

Learn everything you need to know about flight controllers in this comprehensive guide. Understand how they work, what features to look for, and

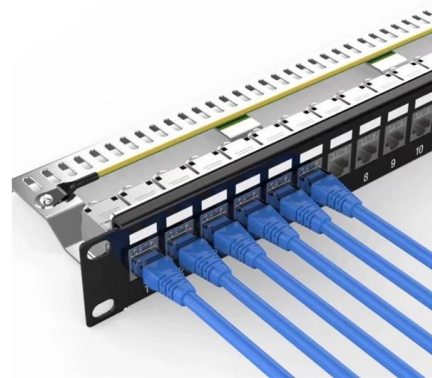


How to Connect/Flash FC to Betaflight with Broken USB

Having trouble connecting flight controller with broken USB port to Betaflight Configurator? Don't throw away the FC just yet, you might be able to fix

R/C USB Interface for PC model flight simulators

The USB-Interface 3 is connected with the servo connectors of R/C receivers or a transmitter cord via these receiver cords. Special pin assignments are possible.



How to Connect/Flash FC to Betaflight with Broken USB

If your FC has a broken USB port and can't connect to Betaflight (or INAV Configurator) and flash firmware, here are some fixes you can attempt to



FC lights up with USB but wont connect to my computer

If the software solutions aren't working you could have a partially broken USB port on your FC (it can happen easily), so the data pins aren't working while the 5v and ground are good.



Causes and Solutions for Flight Controller Failing

Here are some common issues and corresponding solutions: FC power-on issue: Ensure the FC is powered on and can connect to the PC ground



FC Controller GUI Manual



The user can initiate moves, change the state of the controller, adjust configuration parameters, etc. Communication with the FC series is achieved via an RS-422 serial link and a USB to RS422

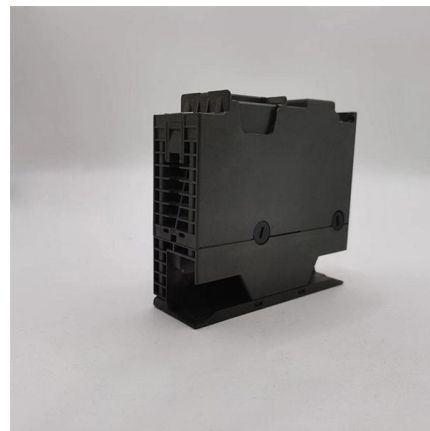


FC5025 USB 5.25" Floppy Controller

Device Side Data's FC5025 USB 5.25" floppy controller plugs into any computer's USB port and enables you to attach a 5.25" floppy drive. Even if your computer

How to FIX Broken USB On Flight Controller // Best and Easy

How to FIX Broken USB On Flight Controller // Best and Easy Way Even With Pulled Traces Drone Mesh (Drone Reviews) 102K subscribers Subscribed



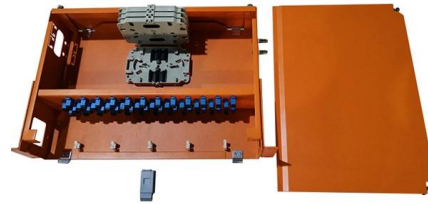
?Dell Community , DELL Technologies

Optiplex 7010 i5-13gen problems with any USB device plugged to it Started By L Leokadi



How to use Nintendo Switch and Switch 2 Pro

The easiest way to connect Nintendo's Switch and Switch 2 Pro controllers to your PC using Bluetooth or USB.



FC Controller GUI Manual

1.2 Overview The FC Series GUI is a graphical user interface, that allows the user to interact with the controller that is integrated with intelligent stepper motor stages. The user can initiate moves, change

FC (USB Device not recognized) , IntoFPV Forum

I have already tried multiple usb cables and even a different pc but eighter of that didnt change anything. Furthermore I tried to flash a new driver to the Fc by using zadic and STM USB



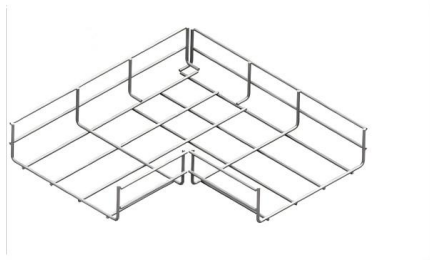
How to Configure any Controller for EA SPORTS FC 25 on PC via

How to Configure any Controller for EA SPORTS FC 25 on PC via Steam - USB, PS4, PS5, Xbox Moroccan Speakers 80.4K subscribers Subscribe



USB Type-C® Port Controller Interface Specification

With the continued success of USB Power Delivery, there exists a need to define a common interface from a USB Type-C® Port Manager to a simple USB Type-C Port Controller. This specification

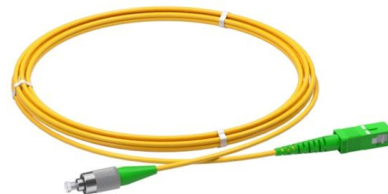


Connecting a USB breakout board to an FC

How to Connect/Flash FC to Betaflight with Broken USB Port? - Oscar Liang Having trouble connecting flight controller with broken USB port to

Fanatec USB Adapter: a quick everything you need to

Installation When you connect the USB adapter, you have to install the driver for the device you're converting to USB (if there's a Fanatec driver already installed your



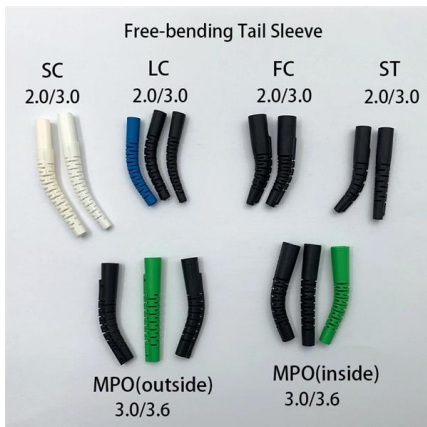
"Failed to open USB device" while trying to flash firmware : r/fpv

"If you are having trouble flashing a flight controller, and seeing, "Failed to Open USB Device" when trying to flash, check if you have the following symptoms.



FC does not power up on USB and refuses to connect to

Despite this, the betaflight configurator won't connect to the flight controller stating that it 'Failed to open a serial port'. When connected via USB the flight controller



Simple RC To USB Interface

With the radio control hobby arguably larger now than it ever has been in the past, there's a growing demand for high-fidelity PC simulators. Whether you

Controller Issues: Complete Player Guide , EA Forums

FC 26 -- Controller setup (important for Online matches) Use only your controller to navigate the opening screens and menus If the controller works offline but not online, restart FC 26



How to Fix Controller Not Working in EA Sports FC 25

In this guide, you'll learn how to fix your gamepad/PS4/PS5/Xbox controller not working, detecting, or switching in EA Sports FC 25.



All About Multirotor Drone FPV Flight Controllers

The USB interface allows connection between the FC and its configurator enabling the user to modify and change the the boards settings



New FC fried when connected to USB

Hey folks, today I installed a new flight controller, checked everything for continuity, plugged in the lipo with a smokestopper in between and was satisfied with myself not to have

Contact Us

For datasheets, pricing, or custom high-speed optical interconnect solutions, please visit:
<https://www.syropy.com.pl>