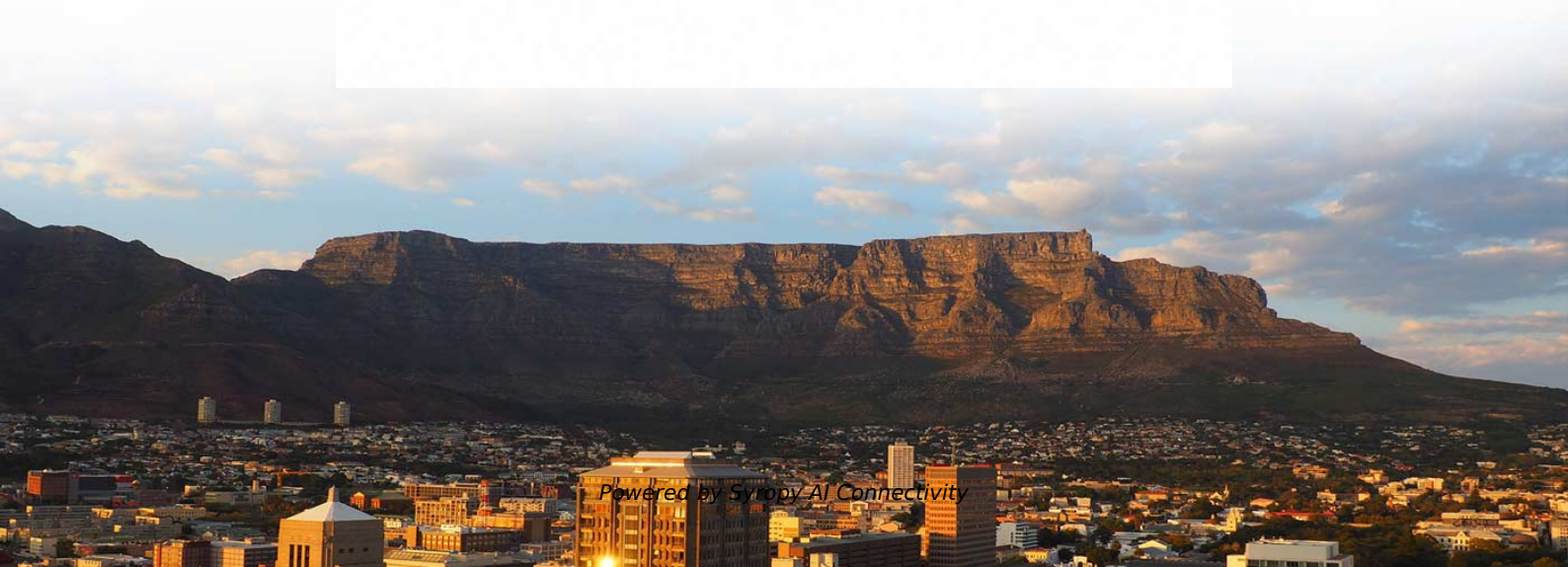


# **Explosion-proof rating of outdoor electrical distribution boxes in Tuvalu**





## Explosion-proof rating of outdoor electrical distribution boxes in Tu

---



### Control and Distribution Panels , Ex d , EJB Series

The enclosures are certified Ex d IIB+H2 and Ex tb as well as "explosion-proof". They are available in many sizes, a wide range of operating elements and

### Ex Local Control Stations & Distribution Boxes

Atex control stations, explosion protected control units and distribution boxes made stainless steel maritime grade AISI 316L or AISI 304L. Atex Delvalle provides a

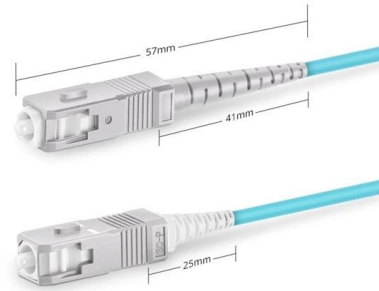


### Explosion-Proof Electrical Box: Principles, Selection, and Industrial

Comprehensive guide on explosion-proof electrical boxes, including definitions, classifications, selection guidelines, testing certifications.

### DISTRIBUTION BOARDS

These are available in a range of materials including Stainless Steel, GRP & Sheet Steel from IP42 (Indoor) to IP 66 (Outdoor) Applications.



Simplex SC UPC



## Offshore Wind Substations: Explosion Proof Electrical Distribution

What specific certifications are required for explosion proof equipment on offshore wind platforms? How does salt spray and humidity affect the longevity of electrical distribution boxes in

## Explosion-Proof Electrical Box: Principles, Selection, and Industrial

Explosion-proof electrical boxes are specialized enclosures or control boxes used in flammable and explosive environments. They prevent sparks, arcs, or high temperatures generated



## Terminal boxes , Junction boxes , Ex , Ex e , Ex d , ATEX , Explosion

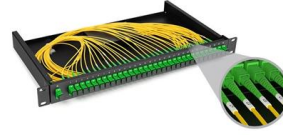
We offer bespoke, custom-made terminal boxes and terminal box combinations, as well as standard products with short delivery times. Our products are certified for installation technologies all over the





## Explosion Proof Power Distribution Boxes CE92

Flameproof and explosion proof, these power overhaul distribution boxes are suitable for use in hazardous areas. Specs: Ex mark: Ex de IIC T4 Gb DIP A21 TA, T4



## GRP Ex Terminal Boxes

HTB1P terminal boxes, made of glass fibre reinforced polyester (GRP), are designed for use in explosive atmospheres: Zones 1, 2 (gases) and 21, 22 (dusts). They

## DISTRIBUTION BOXES Archives

Warom - BXM (D)53 Series Explosion-Proof Illumination Distribution Boxes (EX D E IIC)  
Warom - BXM (D)8050 Series Explosion-Proof Illumination (Power)



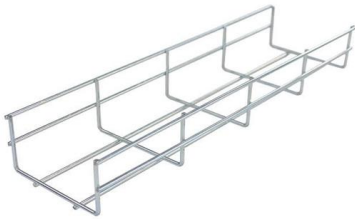
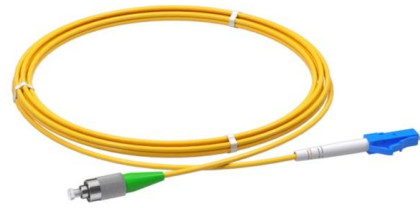
## Explosion proof distribution box

Explosion-Proof Distribution Box (EDB) Built to safely house electrical components in explosive atmospheres, this enclosure prevents internal sparks or explosions from igniting external hazardous



## Ex Junction Boxes and Atex Enclosures - Atex Delvalle

Our explosion protection Ex enclosures and equipment are comprehensive and widely configurable. Reliable in use and convenient to install, their overall quality



### Electrical equipment in hazardous areas

Electrical equipment in hazardous areas This inspection lamp is constructed so that it cannot set off an explosion when surrounded by specified flammable gases or dust. In electrical and safety

### Ex junction and terminal boxes - Explosion-Proof , mlx-ex

GRP Ex terminal boxes What are Ex Terminal Boxes? Ex terminal boxes are protective enclosures used to connect and distribute electrical circuits safely within explosive atmospheres. They serve as



### Explosion Proof Enclosure Comprehensive Guide

Explosion-Proof Distribution box: These smaller components are structurally similar to distribution cabinets. You can use these for the distribution



## Explosion Proof Enclosures for Hazardous Zones

Conclusion Industrial facilities use Explosion Proof Enclosures, IS cabinet boxes or other types of pressurized purged enclosures to ensure the safety of electrical



## Outdoor Electrical Boxes Explained: What You Need to Know for Safe

Master safe outdoor wiring! Discover expert tips on weatherproof electrical boxes for durability, safety, and code-compliant installations.

## Ex-Proof & Flameproof Enclosures & Junction Box , Supermec

All explosion-proof enclosures, lighting or power distribution boxes are manufactured using the latest technologies, both mechanical and electrical, using materials able to resist in most highly corrosive



## ATEX/IECEx Certified Explosion Proof Junction Box

Extensive Product Range: partner with our reputed explosion-proof equipment manufacturers, Prolux International, represents an extensive range of explosion



## Terminal and Junction Boxes (Ex d) , Explosion Protection

Designed to withstand extreme temperatures, EJBX terminal boxes and junction boxes support operation in environments as cold as -60 °C. Customers can have each unit tailored to their



## Explosion Proof Power Distribution Boxes

Flameproof and explosion proof, these power overhaul distribution boxes are suitable for use in hazardous areas. Specs: Ex mark: Ex de IIC T4 Gb DIP A21 TA,T4

## Full Guide on Explosion-Proof Distribution Panel

Explosion-proof distribution panels are vital components in hazardous industrial environments, ensuring safety by preventing electrical equipment from igniting



## Atex Certified Junction Boxes, Terminals, Sockets

These explosion proof junction boxes / terminal boxes, plugs, sockets & connectors are for use in explosive atmospheres in compliance with the ATEX 94/9/EC



## Explosion Proof Illumination Distribution Boxes (With

Flameproof and explosion proof, these power overhaul distribution boxes are suitable for use in hazardous areas. Specs: Ex mark: Ex de IIC T4 Gb DIP A21 TA,T4

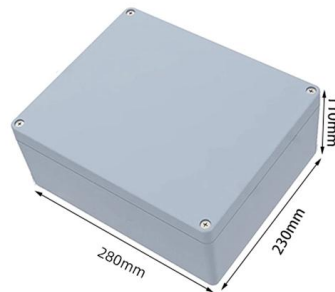


## IP66 Explosion Proof Distribution Boxes for Hazardous Areas

Shop high-quality IP66 explosion proof distribution boxes for safe and reliable electrical installations in hazardous areas. Find durable, customizable solutions now.

## Explosion-Proof Distribution Boxes & Panels Manufacturer

The explosion-proof distribution box safely delivers power in hazardous zones (oil, gas, chemical plants) with rugged, spark-resistant casing--ATEX/IECEX, IP66 certified for reliable operation in explosive



## Contact Us

---

For datasheets, pricing, or custom high-speed optical interconnect solutions, please visit:  
<https://www.syropy.com.pl>