

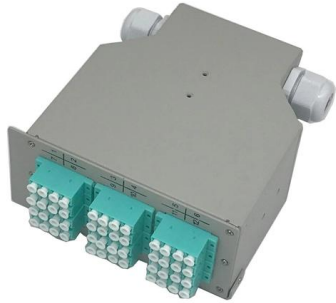
# Existing cable tray crossover





## Existing cable tray crossover

---



### Intersection 4 Way Crosspiece 150mm Hot Dipped Galvanised

- Compatible with the existing Swifts cable tray system
- Available for external and internal applications
- No tools needed
- Integral coupling tabs and fishplates, no couplers required
- Suitable for cable tray

### FactSheet

FactSheet Electrical Safety Hazards of Overloading Cable Trays According to the 2005 National Electrical Code® (NEC), a cable tray system is " unit or assembly of units or sections and



### CABLE TRAYS GENERAL INFORMATION AND

Using cable trays as walkways can cause personal injury and also damage cable tray and installed cables. Performances of cable tray systems are dependent on

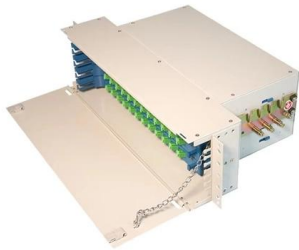
### Annex I

All cable trays must be equipped with an earth cable (usually bare copper cable 25 mm<sup>2</sup> cross section). It shall be fixed on the external part of the cable tray's wall.



### Cross-overs, universal

Discover cross-overs, universal from OBO Bettermann & find the right solution for your project! OBO - Your supplier for electrical installation



### Cable Tray Fill Calculator (NEC 392)

Cable tray fill per NEC Article 392 for ladder, ventilated trough, solid bottom, and channel trays. Multi-conductor and single-conductor rules.



### Cable Tray Crossovers: 4 Way Crossovers

In a well-planned Cable Management system, cables often need to cross paths--but that doesn't mean they should tangle or interfere. Cable Tray Crossovers keep





## Cross-overs, plug connection , OBO

Industrial installations Cable support systems and connection and fastening systems for industry and construction project infrastructure. Building installations Cable routing and underfloor systems for

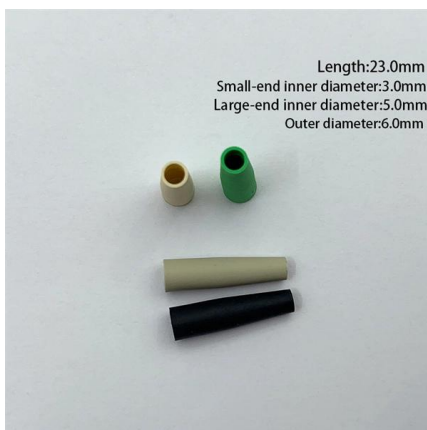


## Complete cable tray manual for electrical engineers and

Complete cable tray manual for electrical engineers and designers (on photo: power cable management ladder tray systems assembled aluminum cable tray ladder

## Cable Tray and Conduit

Draw Parallel Conduits You can add parallel conduits to an existing conduit run that is connected through a surface connector on a piece of equipment or connected to a cable tray. Conduit Options



## How to Fix Common Cable Management Issues using

Discover common cable management problems and how cable tray accessories effectively solve them to ensure safety and performance.



### **Ladder Type Cable Tray Cross , Pratik Cabletray System Pvt. Ltd.**

Typically made from galvanized steel, stainless steel, or aluminum, the ladder type cable tray cross ensures secure and organized cable routing in industrial, commercial, and electrical installations. It



### **Cable Crossovers & Tees For Cable Trays , Metsec**

We offer a range of cable crossovers and tees, available in both equal and unequal measures, for light, medium, and heavy duty cable tray systems in widths of

### **Cable Crossovers , McMaster-Carr**

Place them over existing cable to prevent damage and reduce tripping hazards. All have a textured surface to improve traction. They're also weather and abrasion resistant. Snap together as many of



### **Cable Tray Design, Layout, and Overall Wiring Planning**

Learn about effective Cable Tray Design and Layout for electrical systems. Our guide covers planning, material choice, safety,



## Connecting Cable Trays: Your Guide to Secure and

Learn common methods for connecting cable trays safely and efficiently. Our guide covers splice plates, quick-connects, and key tips for secure



## GrateWalk rooftop walkway

The system is integrated with Eaton's Dura-Blok supports that help elevate the walkway, providing safe passage over existing cabling, piping, cable tray or any

## AUF50630VEX12 , Crosses for cable tray , T& B Cable Tray , Wire

Catalog No. : AUF50630VEX12 Description: AL FIT 5IN 6X30W VEN EXPAND X 12R UPC: 626490671911 Aluminum U-style fitting 5 inches side rail height 6 inches x 30 inches width ventilated



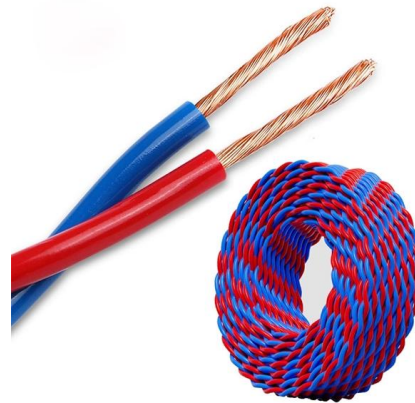
## Medium Cable Tray Crossovers

Medium duty tray is the most commonly used cable tray for carrying standard loads in internal situations.



## Cable Tray Technical Guide A practical guide to product selection and

Cable Tray Technical Guide A practical guide to product selection and installation This guide for engineers and installers has been developed by ABB as a practical reference regarding cable tray



## A Guide to Installing and Supporting Electrical Cable Trays

A professional guide to installing electrical cable tray systems per NEC Article 392. Covers support, securing cables, and fill calculations.

## Calculating Cable Tray Fill for Additional Conductors

Learn how to calculate existing cable tray fill and determine capacity for additional conductors. This video covers measuring cross-sectional areas and calculating fill percentages.



## High-quality cable tray crossings at Ekabel.24

Mit unseren Kreuzverbindern für Kabelrinnen schaffen Sie stabile Verbindungen an Kreuzungen und sorgen für eine saubere Kabelführung. Diese Verbindungen garantieren eine zuverlässige und



## Understanding Ethernet Crossover Cables: A Comprehensive Guide

Ethernet crossover cables are a specific type of network cable used to connect two devices of the same type directly, such as two computers or two network switches. Unlike a standard



## Contact Us

---

For datasheets, pricing, or custom high-speed optical interconnect solutions, please visit:  
<https://www.syropy.com.pl>