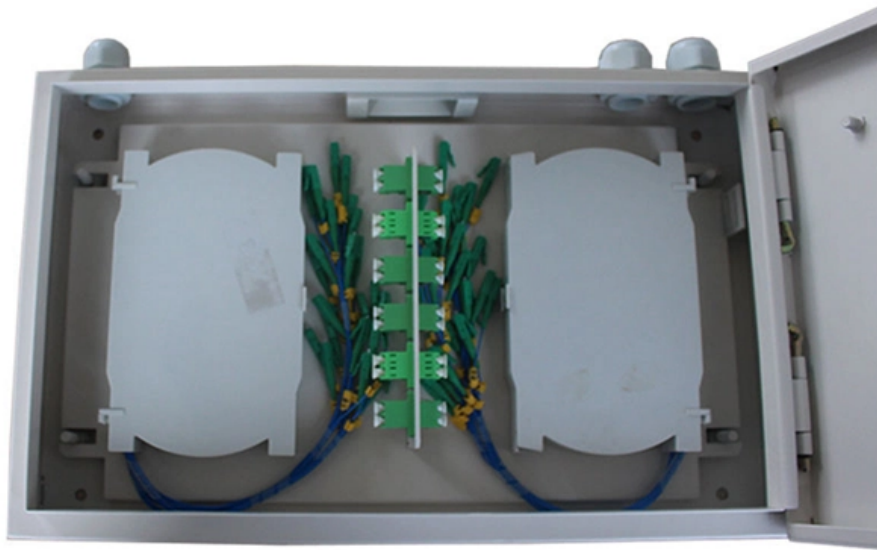


Example of a vertical tee for a cable tray





Example of a vertical tee for a cable tray



Perforated Tee , Pratik Cabletray System Pvt. Ltd. Pune,

A perforated tee is a cable tray fitting used to create a branch connection between three sections of a cable tray, allowing cables to be routed in two directions from

Cable Tray Systems: A Complete Guide to Types

Discover the essential guide to cable tray systems. Learn about ladder, trough, and wire mesh types, key components, and expert installation tips



Cable Tray Accessories

To facilitate easy installation of cable trays we also manufacture accessories e.g. Vertical bend, horizontal bend, cross and horizontal tee. Our range includes

AUF409LVTU48 , Tee for cable tray , T& B Cable Tray , Wire & Cable

Catalog No. : AUF409LVTU48 Description: AL FIT 4IN 9W LAD VERT T UP 48R UPC: 626490627659 Aluminum U-style fitting 4 inches side rail height 9 inches width ladder vertical tee up 48 inches radius



Solved: Vertical Tee Cable tray Fitting

What you have to do is to create a vertical Tee family and place that one manually. It would be great if we could set this kind of fitting in the Cable Tray



CABLE TRAY SYSTEMS GUIDE

Cable Tray Systems Guide HUBBELL Hubbell Wiring Device-Kellems and Hubbell Premise Wiring are divisions of Hubbell Incorporated, a U.S. headquartered manufacturer with over 130 years of



Aluminum Cable Tray

T& B aluminum cable tray is composed of two distinct systems H-Style and U-Style. These systems are interchangeable.





Fiberglass Cable Tray Vertical Tee, Down

Compact fiberglass vertical tee fitting for cable tray systems. Pre-drilled, customizable, easy cable pulling.



What is a Vertical Cable Tray?

What is a vertical cable tray? This guide explains its types (ladder, solid-bottom), benefits for safety & organization, and key applications in data

Ladder Type Cable Tray Tee , Pratik Cabletray System

A ladder type cable tray tee is a fitting used to create a branch in a cable tray system, allowing cables to be routed in three directions. Its "T" shape provides a secure



Vertical Tees , Cable Tray Systems , Power Utility

Vertical Tees are crafted to perfectly complement the wide array of standard Cable Tray fittings, enhancing the flexibility of your installation. All fittings have 3"



Vantrunk Vertical Tees for Cable Trays - Reliable Cable

Enhance your cable tray installation with the Vertical Tee, available in Ascent, Descent, and Lateral Descent variations for added flexibility and seamless



Solved: Vertical Tee Cable tray Fitting

Hello @m7moud_alfat7, Unfortunately, it is not possible to generate a vertical Tee (see red arrow). Only to generate a Tee in the Floor Plan. (see green)

Vertical Tee Cable Tray

We manufacture vertical tee Cable tray which is simple and stylish with straight vertical sides, even it has curved surface on two sides. They are available in



Vantrunk Cable Tray Vertical Tees - Vantrunk

Manufactured to complement the range of standard Cable Tray fittings, the Vertical Tee provides added flexibility to your installation. Available in Ascent, Descent



Vertical Tee Down SDT-type

A Vertical Tee Down SDT-type is a specific type of fitting used in cable tray systems to connect three cable trays at 90-degree angles.



AHF418VVTD12 , Tee for cable tray , T& B Cable Tray , Wire & Cable

Aluminum H-style fitting 4 inches side rail height 18 inches width ventilated vertical tee down 12 inches radius. Made or assembled in Canada.

Speedway Vertical Tee - Vantrunk

Product Categories Speedway Cable Ladder I-Beam Cable Ladder Cable Tray Steel Framing Mounting Frame Lighting Brackets Fixings Design Solutions All REF:

- ✓ Slow Axis Aligned (0°) - for standard sensing applications
- ✓ Fast Axis Aligned (90°) - for special modulation applications
- ✓ 45° Axis Aligned - for depolarizer applications



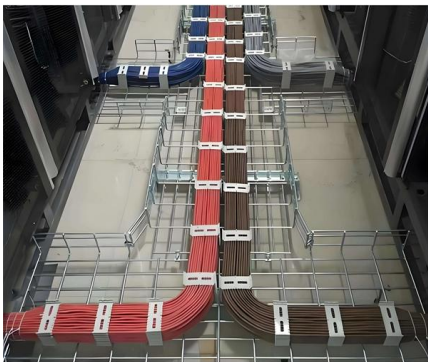
Swage Ladder Tray Vertical Tee, Down

Cope vertical tee down fitting saves space and ensures flexible cable tray configurations.



Vertical Tee Up

Diagonal Corner R=75 mm (Standard) 2.
Diagonal Corner R=150 mm (Request) 3. Curve
Corner R=300 mm (Request)



5" Vertical Tee

Optimize fiber routing with Primus Cable's Inlet Tee Fiber Cable Tray Channel. Achieve a secure 90° drop with flame-retardant PVC and quick tool-free install.

Channel tray

Tray covers are available for all widths of tray. They should be installed where falling objects may damage cables or where vertical tray run is accessible by pedestrian or vehicular traffic.



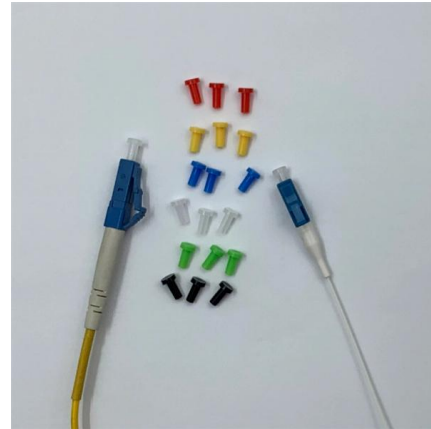
Trof Vertical Tee, UP

Cope Trof Vertical Tee offers durable, space-saving cable tray fitting for secure installations.

Cable Tray Technical Guide A practical guide to product selection and



Cable Tray Technical Guide A practical guide to product selection and installation This guide for engineers and installers has been developed by ABB as a practical reference regarding cable tray



Contact Us

For datasheets, pricing, or custom high-speed optical interconnect solutions, please visit:
<https://www.syropy.com.pl>