

Estonian Main Distribution Box Configuration





Estonian Main Distribution Box Configuration

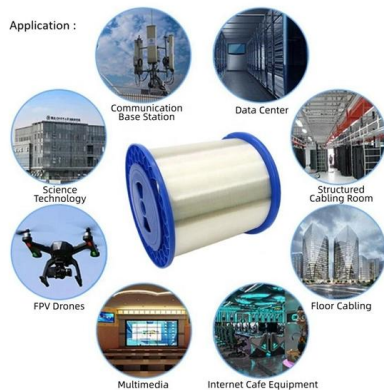
Low voltage switchgear and distribution panels



Logstrup is a switchboard and switchgear supplier. Based on the original 190mm module, the Logstrup Modular System enables any configuration of Main and Sub

Home page

The ES-CAV concrete enclosure compact substation can be equipped with different type medium voltage ring main units and secondary distribution switchgears, as



Distribution boxes

It receives power from a main source - either the public power grid or a generator. It then directs electricity to various circuits, ensuring proper load management and protection.

Présentation PowerPoint

Grid facts and characteristics The electricity grid in Estonia is generally divided into transmission grid (110 kV-330 kV) and distribution grid (0,4 kV-35 kV)



Estonia: market of low voltage boards and panels for control and

Structure of the consumption of low voltage boards and panels for control and distribution of electricity in Estonia in the last 5 years (by origin, by channel, etc.)



Distribution Box Guide: Types, Components & Solutions

The primary function of a distribution box is to route electricity from the main supply to different circuits throughout a building. This ensures that all



Low Voltage Equipment - ESB Group

It is built for distributing and protecting electrical power in public distribution networks and infrastructure, providing high-level environmental protection and safe





Approvals of power plants connecting to the distribution network with

Connecting of type B, C and D generating modules to the distribution system must be approved by Elering.

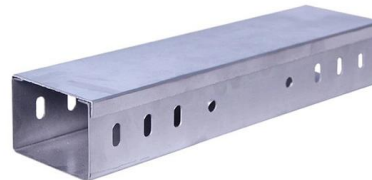


Rail Baltica

Rail Baltica has published its 2026 Procurement Plan, listing the procurements coming up across Estonia, Latvia, and Lithuania. Photo: Rail Baltic

Main Distribution Board (MDB): The Backbone of Safe

Learn what a Main Distribution Board (MDB) is, how it works, its key components, types, and why it's vital for safe, reliable power distribution in any



KOLOSS ELECTRIC OÜ

The distribution board protects against overloads and short circuits in three-phase networks with a voltage of 230/400V and a frequency of 50 Hz and is also used



International-electrical-standards-regulations

The world of electrical installations is not always straightforward. Working on an international project electrical engineers are often bewildered by the extensive amount of electrical standards and wiring



Distribution Box Internal Components Configuration Guide: Breakers

Getting distribution box configuration right isn't just about following rules - it's about understanding electricity's behavior and respecting its power. When you match breakers to their true purpose, layer



Understanding Distribution Boxes: Your Guide to Power

Weatherproof Distribution Boxes These serve specific outdoor purposes, with rain, dust, and extreme temperatures sealed shut, protecting any



Single Phase Distribution Box Definition and Main Parts

A single phase distribution box controls and protects home or office circuits. Learn its definition, main parts, and how it ensures electrical safety.





Distribution switchboards

A distribution switchboard is divided into a number of functional units, each comprising all the electrical and mechanical elements that contribute to the fulfilment of a given function.



Distribution Boards

Easy Installation of outgoing The design of the pan assembly facilitates the installation of outgoing devices. Availability of mixing Mixing two different types of outgoing devices can be provided in

Estonia Power Strips , Estonia PDU Power Distribution Units, Multiple

Estonia power strips and PDU power distribution units for surface mount, rack mount and general purpose applications. Multiple outlet power strips are manufactured in accordance to Estonia



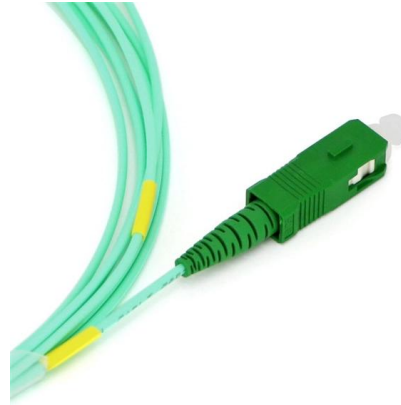
The installation requirements for the distribution box

Learn how to install a distribution box safely and correctly. Covers wiring, placement, standards, and expert tips for a compliant setup.



An article lets you instantly understand the internal structure of the

The distribution box is a device for power distribution and control, and its internal structure includes main circuit breakers, fuses, contactors, etc. The main circuit breaker is used to disconnect and connect



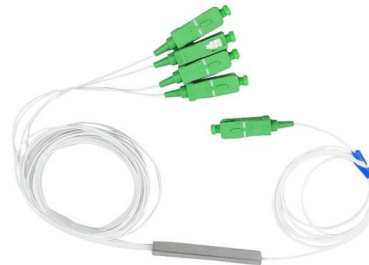
Distribution Board Design: Standards, Surge Protection

Key Components of Efficient Distribution Board Design A distribution board relies on several critical components to ensure safety, reliability, and efficient power



Distribution System Structure , part of Electric Distribution Systems

It is seen that the distribution voltage in the European system is higher than that in the North American system. Configuration of the distribution networks follows one or a combination of the following



Network Code on the Functioning of the Electricity System

The designing and building of the cable installation between the connection enclosure that is part of the consumer's electrical installation and the main distribution board enclosure of the





Power Distribution Boxes Explained Simply

Learn what a power distribution box is, how it works, key components, types, and why it's vital for safe and efficient electrical systems.



Distribution Network Types and Configurations

Distribution networks are considered as a passive termination of the transmission network with a radial structure, unidirectional power flows, and a simple and

Contact Us

For datasheets, pricing, or custom high-speed optical interconnect solutions, please visit:
<https://www.syropy.com.pl>