

Epon optical module output power





Epon optical module output power

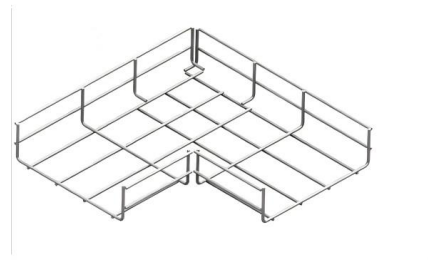


EPON OLT OPTICAL SFP MODULE

BAUDCOM provide high performance EPON optical SFP modules, OLT module and ONU modules.

PON Interface Configuration Commands

The optical-module threshold tx-power command sets the lower and upper alarm thresholds of the transmitting optical power. When the transmitting optical power is out of the specified range, the ONU



EPON OLT PX20+

OP-EPON-PX20+ EPON OLT PX20+ SFP Module, 1.25G Tx1490/Rx1310 20km SC

EPON OLT Optical Transceiver SFP Module

The EPON OLT Transceiver module is designed for Gigabit Ethernet Passive Optical Network (EPON) 20km transmission. The module incorporates 1490nm continuous-mode transmitter



EPON Module VS GPON Module: What Are the Main

Comparing EPON to GPON modules reveals fundamental differences shaping network performance. While both are common in fiber optic networks,

Introduction to GPON Optical Modules and Their

2. Transmission Distance and Power Classes
GPON modules are categorized into different power classes based on their optical budget, which



Support

The OLT can remotely configure the PoE (Power over Ethernet) function of the ONU device, which specifically includes enabling/disabling the PoE function of the UNI port, setting the



EPON OLT PX20++ 20km 8dB Transceiver Datasheet , 6COM

EPON OLT PX20++ 20km 8dB Transceiver Features 1.25Gb/s serial optical interface compliant to 802.3AH specifications small form factor pluggable module "SFP"



EPON OLT PX20+ 20km 7dB Transceiver Datasheet , 6COM

The transmitter has an internal automatic power control loop (APC) to ensure constant optical power output across supply voltage and temperature variations. An open collector compatible Transmit

EPON OLT PX20+

Measured with PRBS 27-1 test pattern @1.25Gbps, Low Pass Filter is on. Max. Loss of Signal. Asserted when light is off.



Computers, Networking, Mobiles Accessories Store

Fiber Optic Power Meter (OPM-50~+26dBm, VFL>10mW, RJ45,, Lithium Battery) UN530CL-V10 Rs 5,800.00 Rs 4,850.00 Networking Tools



EPON Explained: Unlocking High-Speed Fiber Networks

Whether you're a network engineer or a tech enthusiast, you'll learn how EPON powers modern fiber optics--and why choosing the right components,

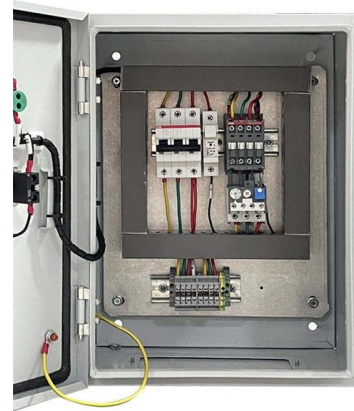


A Comprehensive Guide To EPON OLT

A popular technology for access networks, EPON offers end users voice, video, and high-speed internet services. It distributes data using passive

EPON OLT 1000BASE-PX30 SFP 1490nmTx/1310nmRx 20km DOM

When high, this output indicates the received optical power is below the worst- case receiver sensitivity (as defined by the standard in use). Low indicates normal operation.



Is the VSOL V1600D4 EPON OLT the Right Choice for Your

In my experience deploying optical networks across various residential complexes, the VSOL V1600D4 EPON OLT stands out as a robust unit specifically engineered for high-density Fiber to the Home



fttx onu epon olt

EPON OLT PX20+++ Long-Distance Fiber Access Solution Part Number: EPON OLT PX20+++ Condition: Original new Warranty: 1 year Lead Time: 1-3 working days Shipping: DHL, FEDEX, UPS



EPON Explained: Unlocking High-Speed Fiber Networks

EPON delivers fast, reliable internet using fiber-optic cables with a simple, cost-effective design, making it ideal for homes and businesses seeking

GEPON-OLT Optical Transceivers EPON-OLT-SFP

The Module provides diagnostic information about the present operating conditions. The transceiver generates this diagnostic data by digitization of internal analog signals. Calibration and



EPON OLT Optical Transceiver SFP Module

The laser driver includes APC and temperature compensation functions, which are used for keeping the launch optical power and extinction ratio constant over temperature and aging. The receiver section





EPON OLT PX20+++ 7dBm 1.25G 1490/1310nm 20km SC SX

Featuring an SC connector interface and compliant with the premium PX20+++ class delivering a 7dBm optical budget, it incorporates 100 Ohm differential impedance for both transmitter inputs and



EPON-OLT-PX20++

Single 3.3V power supply
Digital diagnostic monitoring interface
Digital burst RSSI function to monitor the input optical power level
LVPECL compatible data input/output interface
LVTTTL transmitter

Support

The splitting ratio of POS can reach up to 1:128, which means each OLT optical module interface can connect to a maximum of 128 ONUs. ·
Optical Distribution Network (ODN): Composed



PON Module Parameters Guide: How to Choose the Best GPON & EPON Modules

Overload Optical Power : The maximum optical power a device can handle without damage. Currently, the two main standards organizations for PON networks, ITU and IEEE, have



EPON OLT OPTICAL SFP MODULE

Question: What is the output optical power of the PX20+++ PON SFP module. Answer: 8dBm . BAUDCOM provide high performance EPON optical SFP



GPON System Parameters

GPON Port Optical Threshold Alarm GPON Port Optical Threshold Alarm allows you to configure the GPON port to receive and send optical parameter alarm thresholds. When the receiving and

System Management Configuration, Cisco Catalyst PON Series

When the receiving and transmitting optical power of the GPON optical module is not within the threshold, an optical power alarm will be generated. GPON Uplink FEC By configuring the



EPON OLT/ONU Optical Transceiver Modules , AscentOptics

The EPON optical module is mainly used to connect EPON ONU and EPON ONU equipments. AscentOptics can provide EPON OLT SFP optical transceivers for OLT equipments, it include



PON Optical Module

Multi-standard PON modules with high compatibility and reliability for flexible deployment.



EPON OLT 1000BASE-PX30 SFP 1490nmTx/1310nmRx 20km DOM SC SMF Optical

When high, this output indicates the received optical power is below the worst- case receiver sensitivity (as defined by the standard in use). Low indicates normal operation.

Contact Us

For datasheets, pricing, or custom high-speed optical interconnect solutions, please visit:
<https://www.syropy.com.pl>