



Syropy AI Connectivity

Emergency Plan for Overhead Optical Cables Crossing Roads





Emergency Plan for Overhead Optical Cables Crossing Roads

Overhead Optical Cable Construction Guidelines

In the communications industry, how to construct overhead optical cable is a problem that many front-line communications construction workers will



Fiber Optic Cable Installation Method

This document provides a method statement for fiber optic cable installation, termination, splicing, and testing for the MIP PKG 17 RAS TANURA AREA



The FOA Reference For Fiber Optics -Outside Plant

Take photos of all obstacles on the route (existing services, bridge crossings, rocky areas, buildings, built-up areas, paved/tarred areas, wetlands, overhead

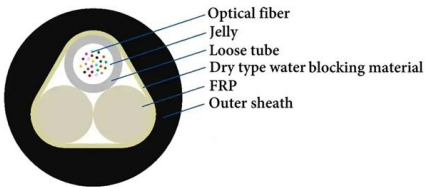
Fiber Optical Cable Installation and Construction

The optical cable crossing the river is left on the adjacent pole of the first pole on the riverbank: the joint should be left on the joint pole, and each joint



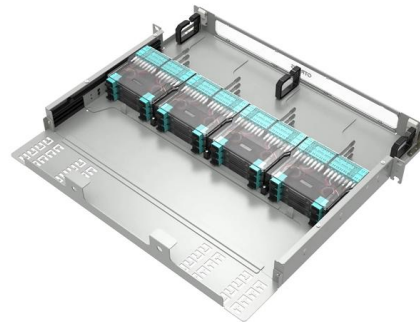
ESB Networks Code of Practice for Avoiding Danger from Overhead

Supply accurate as-built drawings of underground cable ducts showing the location, depth and size of ducts to allow for the safe undergrounding of overhead electricity lines on site where applicable.



Overhead line crossing

Overhead line crossings of roads, railway lines, and small- and medium-sized watercourses do not normally require special construction. However, in the first



ESB Networks Code of Practice for Avoiding Danger from Overhead

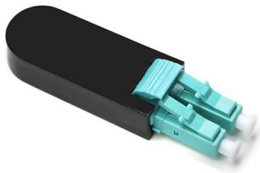
It provides guidance to assist personnel working near overhead electricity lines to manage risk and avoid dangers from electric shock and electrocution.





working near elec brochure v10

We can arrange for one of our engineers to attend site and assist with a variety of activities such as identification of underground plant, surveying overhead line heights and offset distances, reviewing



Standard and Guidance Template

Contact with overhead electric lines is a regular cause of death and injury. It is essential that the hazards arising from overhead lines are appreciated and adequate precautions taken.

Code of Practice for Avoiding Danger from Overhead Electricity Lines

To deal with underground services, including buried cables, the Health and Safety Authority has published a separate COP titled Code of Practice for Avoiding Danger from Underground Services.



Technical Guidance Note 287

In addition to the two main components, some Overhead Line Routes carry a Fibre Optic cable between the towers with an final underground connection to the Substations. In most cases, National Grid's



Safety management of submarine cables and overhead lines crossing

Scope of guideline This guideline aims to reduce the electrical hazard risks to water vessel users, to reduce the risk to power line and cable assets from contact by water vessels, and provide for national

LoRawan outdoor base station

- * Industrial Internet gateway
- * Compatible with LoRaWAN network,
- * ClassA/B/C mode
- * Support 8/16 channel
- * Supports PoE power
- * supply and backup battery power supply
- * 10KV lightning protection



Lashed Aerial Installation of Fiber Optic Cable

Refer to the cable specification sheet for the specific allowed tension for each cable. Coils are required for all ribbon gel-free and gel-filled armor cables that are in a butt-type closure any other closure, or

Code of Practise

ESB Networks provides a 24 hour emergency response for emergencies which include contact with or damage to overhead electricity lines, underground cables or other plant.



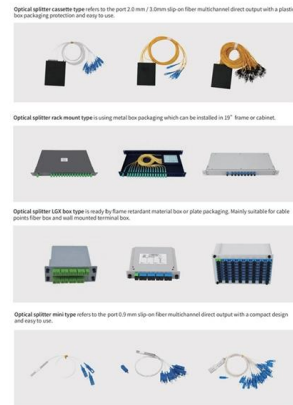
Overhead power lines

This information sheet gives lots of practical guidance on how to avoid danger when working near overhead power lines. It is aimed at those working in agriculture, but many of the principles



SCAFFOLD AND CONDUCTOR SUPPORT SYSTEMS FOR LIVE

A detailed emergency plan to be enacted in the event of Danger arising, specifically detailing actions to be taken in the event of a broken Conductor and including a procedure for recovery of Conductors.



Lashed Aerial Installation of Fiber Optic Cable

an existing lashed fiber optic or copper cable. This method of aerial cable installation, "overlashing," is attractive because the expense of providing a separate suspens

Broadband PERMIT Fiber Optic

For overhead road crossings, the plans must indicate the minimum vertical clearance distance as determined by the affected authority. Crossing are to be made perpendicular to the roadway. The



Handling of TD s installations During Emergency

Handling of Traffic Installations During Road Works 1. Introduction During road works involving road opening, roadwork contractors or utilities undertakers (UUs) may encounter traffic installations, such



FOSA DFOS Installation Considerations For Highways

It covers cable types, configurations, deployment methods and considerations for different applications including traffic monitoring, mobility, hazard detection, and



EHV Overhead Lines & Underground Cable Protective

Handbook on protective regulations for EHV overhead lines and underground cables. Safety guidelines for working near transmission lines.

Overhead power lines

Plan and manage work near electric overhead power lines so that risks from accidental contact or close proximity to the lines are adequately controlled. Safety precautions will depend on the nature of the



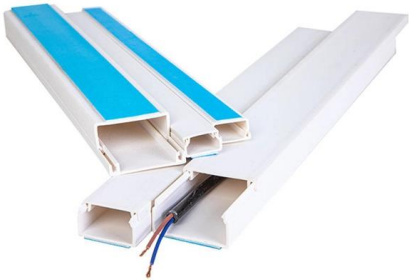
Apply for consent to place cables on or over the highway

This consent grants permission to erect or hang cables on or over the public highway.



EHV Overhead Line & Cable Protection Handbook

Handbook on protective regulations for EHV overhead lines and underground cables by DEWA. Safety guidelines for contractors and consultants.

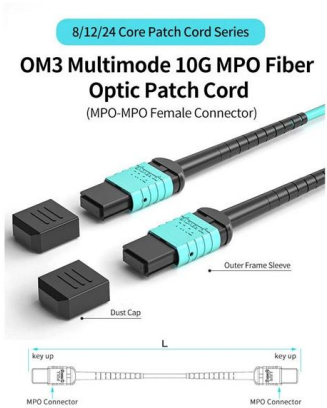
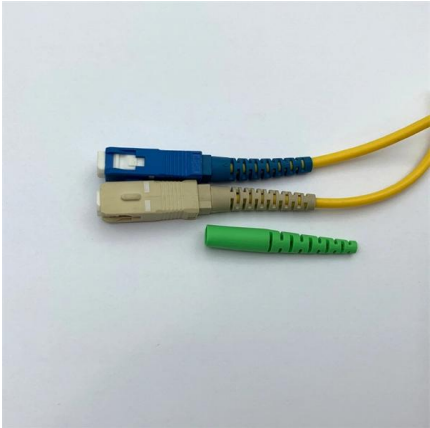


Ensuring Connectivity: A Comprehensive Guide to

This information is a valuable resource for future emergency planning and provides insights to improve response strategies and minimize the impact of

ESB Networks Code of Practice for Avoiding Danger from Overhead

The area of a hazard zone is related to the voltage of the overhead electricity lines, so the voltage of overhead lines must be identified. To do this, contact ESB Networks for assistance or get maps and



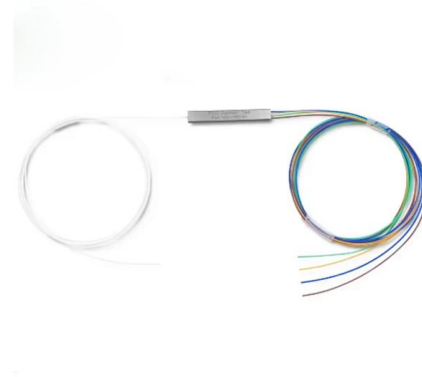
GUIDELINES FOR USE OF UNDER GROUND CABLE SYSTEM AND OVERHEAD

Underground network installation is more expensive than OH lines, since the cost of cables include cable charges along with road restoration charges which make the per unit coat of U/G cabling



Electricity - overhead power lines

What you need to do The law says that any work near electric overhead power lines must be carefully planned and carried out to avoid danger from accidental contact or close proximity to the lines. The



Contact Us

For datasheets, pricing, or custom high-speed optical interconnect solutions, please visit:

<https://www.syropy.com.pl>