

Electrical distribution box protection level 1 or 2





Overview

As for the equipment inside, there are certain differences: the first level distribution cabinet generally has isolation switches, circuit breakers, leakage protectors, etc. Two-level protection refers to the leakage protection of the main distribution box and switch box. Adequate system designs allow for the system to withstand and isolate faults while not causing additional damage and/or outages.



Electrical distribution box protection level 1 or 2



IP protection in electrical installations , Solera

Learn what IP protection means in electrical installations, how it is classified, and which level you need depending on environment and project needs.

Safety protection function and design of low voltage distribution box

Use circuit breakers, fuses, and surge protective devices to prevent electrical hazards. Regular inspections of your distribution box help identify issues early. Check for overheating,



Detailed Explanation of Tiered Surge Protection for Distribution Boxes

Level 2 protection mainly focuses on suppressing transient overvoltages and effectively absorbs the residual surge energy after Level 1 protection. This level of protection is usually sufficient for the



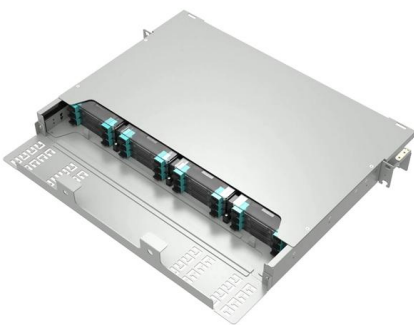
First-level Lightning Protection, Second-level Lightning Protection

Multi-level protection design: Install primary lightning protection at the entrance of the building, secondary lightning protection in the distribution box, and third-level lightning protection at



Switchgear Box Protection Levels -- How to Choose the

The protection level of a switchgear box directly impacts its safety, lifespan, and reliability. For buyers and engineers, choosing the right IP or NEMA rating is a



DB BOX(Electrical Distribution Box): Everything You

Wiring: Next, the electrical cables will be connected to the incoming power source (like the main distribution panel) and the outgoing circuits. Circuit



IP Ratings Explained

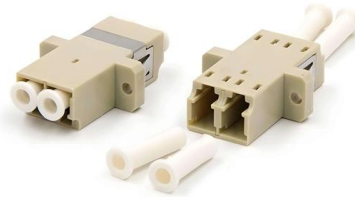
What are IP Ratings? Learn more and protect your electrical enclosure and its contents by knowing where and how it will be used so that you determine the correct IP Rating.





Distribution boards components

Distribution boards (generally only one in residential premises) usually include the meter (s) and in some cases (notably where the supply utilities impose a TT earthing system and/or tariff



IP65 Distribution Box

IP represents the international protection level (Ingress Protection), 65 means dustproof level 6 and waterproof level 5. This grade of distribution box is highly

Protection Class 1, 2, 3 (I/II/III) - Differences & Symbols Explained

Protection Class I with protective earth, II with double insulation, III with safety extra-low voltage SELV - differences, symbols and typical equipment explained. With comparison table and FAQ.



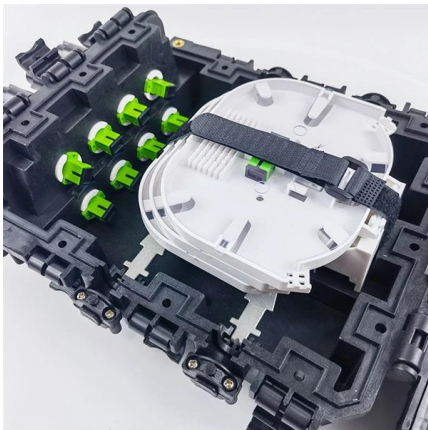
Protection concepts IECEx and ATEX

The table below lists the types of protection methods and basic concepts of protection according to ATEX and IECEx standards for electrical equipment that is to be operated or installed in hazardous



Explosion-Proof Electrical Equipment and ATEX Zones

In industries like oil and gas, chemical plants, and grain silos, safety is a top priority--especially where flammable gases or dust are present. That's where



Lightning Protection Level

Lightning protection of buildings is a separate subject beyond the scope of this book. However, the Refs [2, 3] can provide some useful overview on lightning protection systems covered by standards such

Analysis of NEMA ratings for distribution boxes: Choose the protection

NEMA ratings are like weather forecasts for your electrical equipment - they tell you exactly what environmental conditions your enclosure can handle without turning into an expensive paperweight.



Power Distribution Box Essentials: Functions, Types

Easy distribution via Power distribution box + Longer Lifespan of Equipment: Electrical appliances and machines are made to last longer due to



The Importance of IP Ratings in Electrical Enclosures

Explore the comprehensive guide on the critical role of IP ratings in safeguarding electrical enclosures across industries. Learn how to select the right



The Complete Guide to Distribution Box: Installation, Types & More

Blog The Complete Guide to Distribution Box: Installation, Types & More By Admin Aug 2, 2025
No Comments # distribution box Introduction
Electrical systems power our homes, offices, and

Analysis of the protection level test standard for distribution boxes

Distribution boxes protect our electrical systems like bodyguards shield VIPs. When they fail, everything goes dark. Today, we'll explore how international standards translate into practical



What is Level 1, Level 2 and Level 3 distribution box

Three level distribution refers to the general distribution box, distribution box, switch box. Two-level protection refers to the leakage protection of the main distribution box and switch box.



NEMA Enclosure Ratings

The most common types of NEMA ratings are:
NEMA 1: This rating provides basic protection against dust, dirt, and accidental contact with the



System Protection

The major concern for system protection is protection against the effects of destructive, abnormally high currents. These abnormal currents, if left unchecked, could cause fires or explosions resulting in risk

IEC 60529 Standard: Understanding Degrees of

Electrical enclosures protect devices from dust, water, and accidental contact. The IEC 60529 Standard defines the degree of protection provided by



Class 1 Division 2 Electrical Requirements and Best

Class 1 Division 2 classification defines hazardous locations where flammable gases, vapors, or liquids may be present. This can happen



Electrical network protection guide

Introduction to Electrical network protection guide Among their multiple purposes, protection devices: Contribute to protecting people against



Contact Us

For datasheets, pricing, or custom high-speed optical interconnect solutions, please visit:
<https://www.syropy.com.pl>