

# **Effect of voltage at the opening of the small busbar**





## Effect of voltage at the opening of the small busbar

---

50km/spool

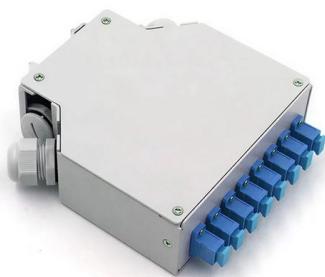
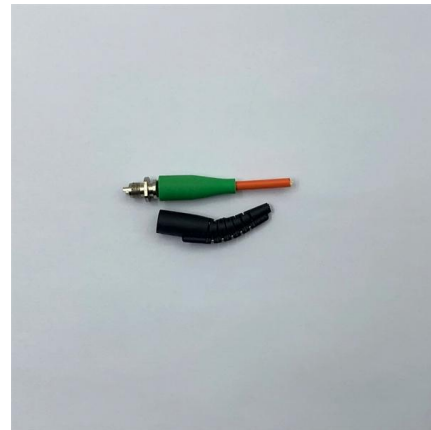


### Agrawal-28New

Since the proximity effect in terms of  $X_a$  is only little compared to conventional busbars, the system does not call for a special enclosure treatment to dissipate excessive magnetic heat or phase transposition

### Numerical analysis on the short-circuit withstanding performance of

Abstract The short-circuit withstanding performance of busbar system is one of the most important safety indexes for low-voltage (LV) switchgear. The resonance characteristics, short-circuit



### Multiphysics Analysis of Busbars with Various

Moreover, after practical investigation of several busbar systems, the proposed multiphysics modelling approach is applied to the busbar system of a

### Bus Bars: Essential Components of Power Distribution

Bus bars appear to be simple and low glamour in comparison to many other active and even passive components, and in some ways, they are.



### **Busbars are simple in principle, complicated in practice:**

Voltage drop and low voltage at the load are more than just a nuisance; they can be a significant issue. It can cause circuits not to function at

### **Design Guide for bus bars , Mersen**

The plating can provide advantageous electrical properties, decreasing the voltage drop. When gold is used, it is generally only plated on termination surfaces to



### **The role of busbars in connecting battery cells**

As we know, busbars play an important role in connecting the battery cells in electric vehicle batteries. To better understand this role, we need to delve



## Busbar Design for High-Power SiC Converters

Busbars are critical components that connect high-current and high-voltage subcomponents in high-power converters. This paper reviews the latest



## Bus Bar Theory of Operation

The cutout in the bus bar has the largest impact on the magnetic field strength measurement. This document will describe two possible configurations: hole and slot.

## Design of a New Busbar for VFTO Suppression and

The single-turn construction of the busbar does not change the path of the transmitted current on the busbar, and the inductive effect is not significant.

LoRa handheld portable base station



## Electrodynamic Forces in Main Three-Phase Busbar

The article presents numerical models obtained in the QuickField program for the analysis of three-phase rectangular busbar systems of low or



### Numerical analysis on the short-circuit withstanding

Four typical busbar system arrangements in LV switchgear are



### Solution Power ANSI 38kV Medium Voltage Switchgear Installation

Periodic inspection k each busbar fixing section, a ve relay, current & voltage transformer, fuse, module card, etc.) f rrent & voltage transformer, fuse, module card, etc.) for noise,

### Numerical analysis on the short-circuit withstanding

Abstract The short-circuit withstanding performance of busbar system is one of the most important safety indexes for low-voltage (LV) switchgear. The



### Busbar Power Distribution Explained: Benefits, Types,

Discover the benefits, types, and applications of busbar power distribution systems. Learn why busbars offer efficient, safe, and space-saving



### FEM simulation of dynamic response of flexible busbar systems under

This paper investigates dynamic responses of flexible busbar systems under balanced three-phase alternating short-circuit (SC) currents using finite element method (FEM) simulations. In

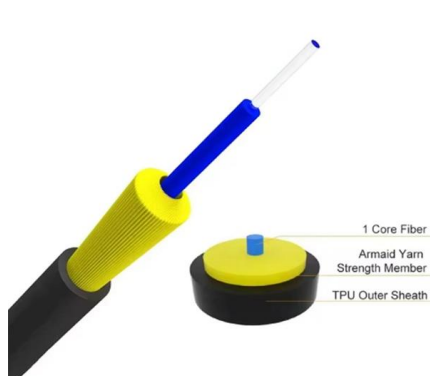
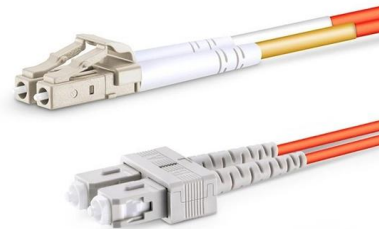


### Power Applications Using High-force Press-Fit

The full integration of busbars within power applications by using pluggable, high-force, press-fit technology can significantly improve power efficiency, reduce the bill-of-material costs, decrease

### (PDF) Study on the electromagnetic force affected by

Each busbar conductor of a phase is subjected to a force due to the short-circuit currents. In this paper, the electromagnetic forces affected by the



### Flexible Busbar Solution for High Current Density Applications

Figure 3 above shows the comparison of the skin effect ratio for cylindrical vs rectangular conductors. As showed in Figure 4, when the cross sectional area is smaller than 150 mm<sup>2</sup>, there are small



## Busbar Protection

Busbar protection refers to a specialized system designed to safeguard busbars from faults, characterized by features such as main and check zones, fast response, high stability, selective

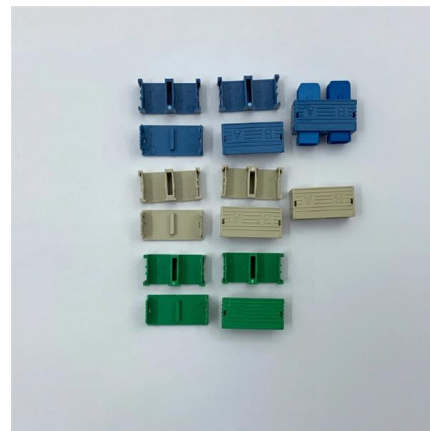


## FEM simulation of dynamic response of flexible busbar systems under

In Scenario 5, contact conditions were set for the flexible busbars to simulate the pinch effect through contact pairs between the subconductors within a phase.

## Multiphysics analysis of busbars with various arrangements under

A busbar failure in low-voltage or medium-voltage switchgears could have disastrous results which may lead to fire or even explosion in switchgears. In an average case scenario, the pricey circuit breakers



## Copper for Busbars

The open construction of busbars increases the risk of faults, e.g. by the ingress of foreign bodies into air gaps, and the risk of consequent damage is high due to their high normal operating currents and the





### Bus Bar Theory of Operation

A smaller cutout cross section will produce a larger magnetic field strength inside the cutout. The noise level generated by stray magnetic fields is not affected by the cutout size. Therefore, a larger



### What is Electrical Busbar? Types, Advantages,

What is Electrical Busbar? Electrical busbar is basically a type of conductor that collects power from the incoming feeder and transfers to the

### High Voltage Busbar Protection

Even though the likelihood of a short circuit is greater, the risk of widespread damage is lower. In principle, busbar protection is needed when the system protection does not protect the busbars, or



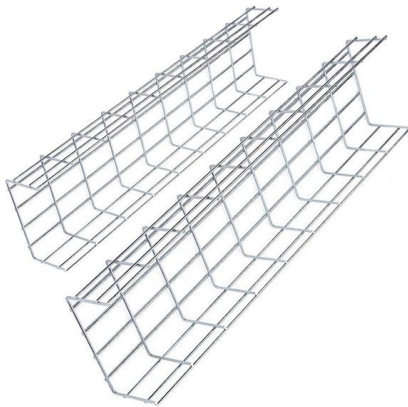
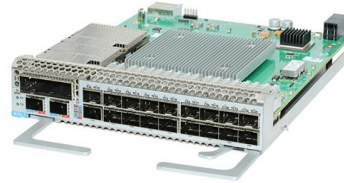
### Busbar design application note

1.1 Definition of a busbar In battery packs for electric mobility, a busbar is used to connect battery cells or modules. In automotive battery packs, busbars are used to connect battery modules together.



## Electrodynamic forces on busbars in LV systems

3. electrodynamic forces in a three-phase busbar on a two or three-phase fault Consideration of three-phase busbar peculiarities when designing busbars for LV switchboards and prefabricated ducts, and



## Numerical analysis on the short-circuit withstanding

Four typical busbar system arrangements in LV switchgear are chosen for the research. Their resonance characteristics and mechanical

## Contact Us

---

For datasheets, pricing, or custom high-speed optical interconnect solutions, please visit:  
<https://www.syropy.com.pl>