

Dual power distribution box CCC requirements





Dual power distribution box CCC requirements



What is a Distribution Box? - A Comprehensive Guide

A distribution box organizes and controls power flow, ensuring safety and efficiency in electrical systems.

Understanding Distribution Boxes: A Comprehensive Guide

A distribution box, also known as a power distribution box or electrical distribution box, is used to distribute electrical power safely to multiple



Bussmann series CH modular fuse holder data sheet no. 10430

Comb busbars Easily distribute power in single-or three-phase systems Flexible cut-to-length busbars do not compromise the finger-safe protection (requires using endcaps) 100 kA SCCR when protected

Power Distribution Power distribution systems

Elements of a power distribution system For the reasons above, mission critical applications use a dual-sourced feed for their power input. One source is the utility grid, while the other is an emergency

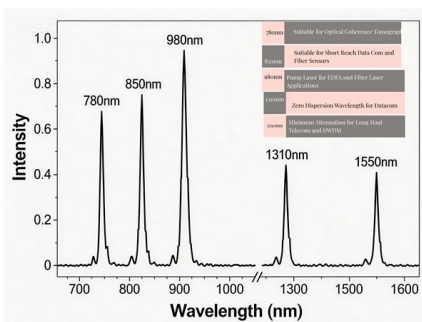


PDI PowerPak 2 Power Distribution Unit

The PDU shall have a 200%-rated neutral copper busbar as standard in each distribution output section or shall have a smaller percentage rated neutral as specified by the customer, subject to approval by

Understanding the ATS Dual Power Distribution Box:

This comprehensive guide offers insights into the mechanisms and benefits of the ATS Dual Power Distribution Box, tailored to meet modern



CCC Certification Process

It should contain basic instruction, rating, and any safety warning information (in Simplified Chinese) If a series of equipment is being certified, a formal letter describing the differences needs to be provided



CCC Certified Electrical Components: Your Complete Guide to

Comprehensive guide to CCC certification for electrical products entering China market. Learn testing costs, timelines, 2026 QR code requirements, and compliance strategies for Southeast Asia



Requirements for Direct Current (DC) Power Distribution Systems for

The title is changed from "Guide for Direct Current (DC) Power Distribution Systems for Marine and Offshore Applications" to "Requirements for Direct Current (DC) Power Distribution Systems for

Distribution Box Guide: Types, Components & Solutions

Understand distribution boxes (DB boxes) in 5 minutes. Learn about types, components, functions, and uses. Find the perfect DB box for your needs.



Power Distribution Box (PDB)

SED Inc.'s Power Distribution Box (PDB) can make your product National Electrical Code (NEC) compliant for North America, without all the paperwork and expense!



Distribution Boxes: Types and Functions

Learn what an electrical distribution box (DB/distribution board) is, its main components (MCB/RCCB/RCBO, SPD, busbar) and common types.

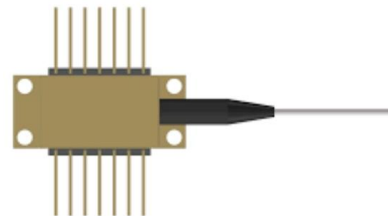


Understanding Power Distribution Boxes: Types, Features, and

This guide delves into the intricacies of power distribution boxes, shedding light on their design, functionality, and regulatory standards. Readers can expect to gain a comprehensive

Dual Power Switching Box Introduction: Principle

+ Minimal Manual Work Required: With some dual power switch boxes, the need for manual operations is reduced as the switching process is



Ultimate Guide to Dual Power Supply Boxes: Benefits & Setup

In summary, dual power supply boxes represent a pivotal advancement in power distribution technology. Their ability to ensure redundancy, enhance performance, and provide adaptability makes them a



Technical requirements for high and low voltage

The components in the box should be installed tightly, the coating should not slip or be damaged, and there should be anti-loosening measures, and the fasteners

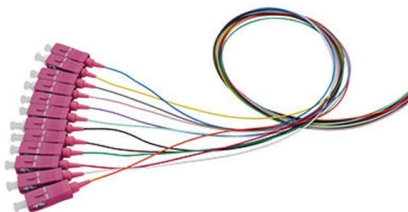


Understanding Distribution Boxes: Your Guide to Power

Every single type of these power distribution boxes serve to regulate electricity management systems safeguarding the structure against unauthorized

CCC-Relevant Products

Our overview tables provide a first orientation over the CCC catalog and CCC certification relevant products.



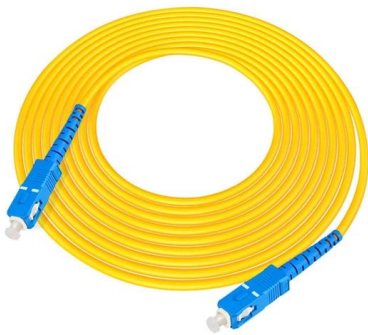
Distribution Box: Types and Functions , Axis-Electricals

A distribution box ensures that electrical supply is distributed in the building, also known as a distribution board, panel board, breaker panel, or electric panel. It is



Ultimate Guide to Dual Power Supply Boxes: Benefits & Setup

When it comes to setting up a dual power supply box, the process can be straightforward but requires careful planning. The first step is to assess the power requirements of the devices that will be



Circuit Protection Methods

Determining whether a circuit is adequately protected can require a high-level view of the electrical distribution system, from the fault current available at the source of supply down to the end device

Power Distribution Boxes Explained Simply

Discover the essentials of a Power Distribution Box--how it works, key types, benefits, and tips to ensure safe, efficient electrical power management.



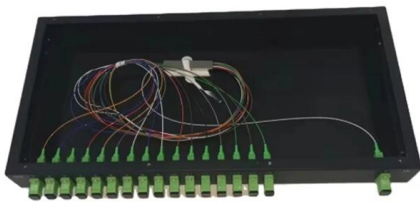
What is China Compulsory Certification (CCC) Marking?

a step-by-step guide for how to obtain a China Compulsory Certification (CCC) Marking for your exports to China.



CCC certification of distribution boxes: The key to entering the

There's a critical gatekeeper you can't ignore, and if you're a distribution box supplier, it's time to get very familiar with it: the CCC certification. Let's cut to the chase.



Technical Guidelines for Interconnection of Distributed Generator to

Fig. 3.3 shows the planning processes and connection voltage for various proposed DG output power, where PSS is power system studies and CCC is connection confirmation check.

Requirements And Specifications For Installation Of

In flammable and explosive environments, explosion-proof distribution boxes should be selected and explosion-proof treatment should be carried out.



Dual Power Switching Box Introduction: Principle

A dual power switch box disables security systems during periods of non-power, which guarantees protection. Residential buildings: These switch



MNS® Low Voltage Distribution Board and Power Cabinet

Higher temperatures of up to +70°C over a short period (no more than 24 hours) are permissible.
Note: Higher humidity of up to 90% (+20°C) is permissible when temperatures are low. Suitable for indoor



Three Requirements and Three Functions of AC Power Distribution Boxes

AC power distribution boxes should be equipped with stable low-voltage electrical components and have sufficient allowance to ensure reliable system operation. Maintenance and Repair The AC power

Contact Us

For datasheets, pricing, or custom high-speed optical interconnect solutions, please visit:
<https://www.syropy.com.pl>