

Dual-circuit testing of fire protection distribution box





Dual-circuit testing of fire protection distribution box



BS 8519:2020

Testing of Category 3 cables of core sizes up to and including 4 mm² cross-sectional area. Determining the cross-sectional area of drop rods. Example voltage drop calculations for cables in a fire. Cable

Fire protection enclosures

To check the I30/I90 classification of the fire protection enclosures, testing has been carried out in accordance with DIN 4102 Part 11.



The System of Fire Check and Alarm about Low Voltage Distribution Box

In view of the Electrical Safety demand, carries on using the monolithic integrated circuit to the power source condition examines and judges and carries on the corresponding control, has realized the

The importance of electrical inspections in reducing fire

With only three common elements needed for a fire to initiate - oxygen, fuel and heat - electricity can play a pivotal role in the combustion process by providing the



Explore Power Distribution Box Types and Functions

Power distribution boxes are used in commercial and residential buildings and are part of the electrical system, also known as switchboards.



Mains power supplies to fire systems

The purpose of this is to certificate compliance of the circuit with the said standard e.g., BS 5839-1 for non-domestic fire detection and fire alarm



MDB Testing & Commissioning Guide , PDF , Power

The document outlines the testing and commissioning procedure for the Main Distribution Board (MDB) after installation, detailing three cases of inspection and





NFPA 20: Fire pump design

Learning Objectives Learn how to properly size a fire pump. Understand the differences between various styles of fire pumps. Know how to



Testing for safe and efficient branch circuits

Branch Circuit Testing Branch circuit wiring and testing practices are primarily code driven with little thought as to why such stringent requirements are necessary. But these practices are necessary to

BSI Standards Publication

It also identifies the need for dual redundant electrical supplies run via diverse cable routes, installed within separate fire compartments, and the need to incorporate automatic changeover devices,



Why do meter box and small power distribution units frequently catch fire?

There may be many reasons for frequent fires in meter box and small power distribution units: Overload current: If electrical equipment connected to a circuit uses more current than the meter box and small



How to Choose a House Distribution Box , CHINT global

Safety Considerations Safety is the top priority when choosing a distribution box. The distribution box must be able to handle the electrical load



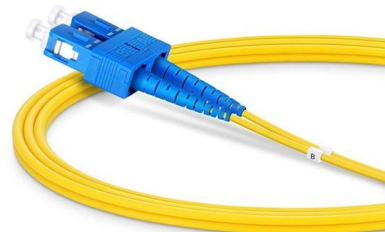
2 Hour Fire Rated UL/ULC Certified Cable Installation Manual

For fire survival circuits it is necessary to use metallic supports, for example, the TEC Clips and Saddles, to ensure cables are maintained in position during a fire.



Secondary Supply

The goal: clarify requirements for the diverse cable routing and maintain circuit integrity under fire conditions for systems that support life safety



Safeguarded junctions with circuit integrity in the

The junction box is equipped with two LSA-Plus connection strips, each for 10 dual cores. Electrical intrinsic fire resistance is guaranteed up to E30 and an IP66 protection class is certified for indoor





REAL LIVE FIRE TEST - Solar DP Box Safety Proven! In

In this video, we perform a live fire testing inside a Solar DP Box (Distribution Panel) to show how the Tiger Automatic Fire Extinguisher works in real fire conditions. This DIN rail-mounted

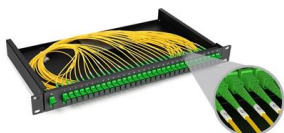


ECU Fire Protection System for Distribution Boards

To protect against overheated ECUs, we've manufactured an ECU fire protection system consisting of an ECU cover housed with intumescent lining. The flexible

Power Distribution Boxes Explained Simply

Bus bars and internal wiring help distribute electricity to each connected circuit efficiently. The box keeps everything safe by balancing the load,



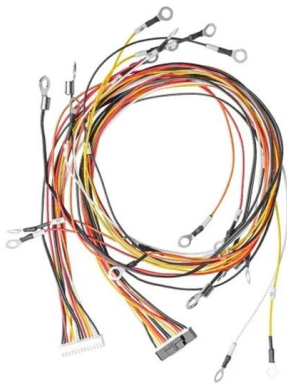
Fire Testing, DIN 4102-12

System circuit (functional) integrity in accordance with DIN 4102-12 Maintaining the function of electrical cable during the fire, defined as the concept of cable system is characterized by the German DIN



Distribution Boxes: Types and Functions

Distribution boards can be customized to meet different wiring layouts, circuit quantities (ways), and environmental requirements such as IP



ECU Fire Protection System for Distribution Boards

The ECU fire protection system was designed to meet new regulations, protecting domestic units and distribution boards from potential fire damage.

UFC 601-02 Fire Protection Systems Inspection, Testing, and

Reasons for Document: o This UFC provides updated requirements for inspection, testing, and maintenance (ITM) of fire protection and life safety features in DoD facilities.



INSPECTION AND TESTING OF ELECTRICAL INSTALLATIONS:

BS EN 61008-1:2012 Residual current operated circuit-breakers without integral overcurrent protection for household and similar uses (RCCBs). BS EN 61009-1:2012 Residual current operated circuit



Selection and installation of fire-resistant power and control cable

Provides guidance and recommendations for selecting and installing fire-resistant power and control cable systems.

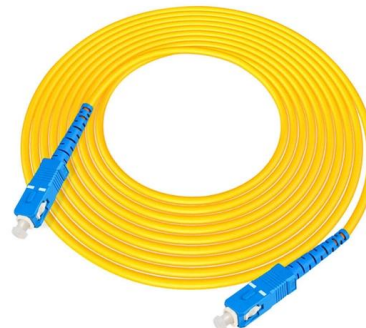


Distribution Panel Testing Checklist

The document is a checklist for testing and commissioning a control panel or distribution board.

installations have critical functions to perform in the event of fire

Fire resistance (circuit integrity) Will the circuit continue to operate as normal during a fire and for how long? Tests include furnace and ribbon burner tests on power distribution cables, often including



Fire protection cable boxes: Spelsberg

Fire protection junction boxes In the event of a fire, only absolutely reliable products prevent the spread of fire and guarantee safe function of electrical systems relevant for rescue and escape in buildings



Contact Us

For datasheets, pricing, or custom high-speed optical interconnect solutions, please visit:

<https://www.syropy.com.pl>