

Driver bus low voltage





Driver bus low voltage

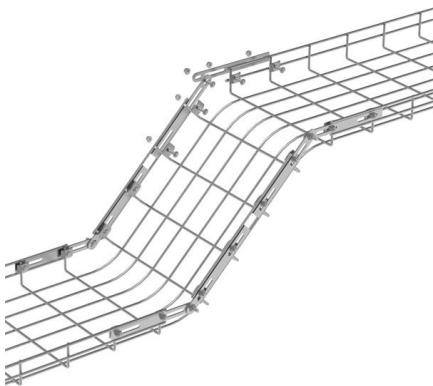


Half-bridge gate drivers ease design with GaN in low

Rated for maximum rail voltage of 220V, the drivers integrate linear regulators to generate high-side and low-side 6 V gate signals and provide

SN74ABT240ADBLE BOM Components BUS DRIVER, ABT SERIES,

BUS DRIVER, ABT SERIES, 4-BIT Mounting Type - Packaging Type Bulk Function Buffers, Drivers, Receivers, Transceivers Application Buffers, Drivers, Receivers, Transceivers Operating



VFD Undervoltage Fault

Drive (VFD) undervoltage protection for common low HP drives is based on the measured voltage on the DC bus of the drive unit and not the input AC voltage. It is important to realize this fact

Single stage LED driver with low bus voltage

Single-stage LED driver with low bus voltage Yijie Wang, Yueshi Guan, Xiangjun Zhang and Dianguo Xu A single-stage driver is proposed. The LED driver is obtained by integrating an interleaved boost



Motor Driver Solutions for Ultra-low Voltage Applications

ST portfolio of integrated motor control drivers for portable and low voltage applications STSPIN electrical performance - 3x3 QFN package, low Rds on, low Iq (< 80nA) Easy prototyping with



Standard Logic , Renesas

Low-voltage CMOS (LVC) products support 5V tolerance, hot insertion, and 3.3V/2.5V operation, with features such as buffer drivers, bus transceivers,



Designing with Low-Side MOSFET Drivers

This note will help clarify what is important when considering a specific MOSFET and will aid in choosing a Micrel low-side driver to optimize the application.



Low power high-speed multithreshold voltage CMOS bus architectures

Low power, high-speed bus architectures, based on low swing voltage technique, using multithreshold voltage transistors are proposed in this paper. Three different classes of



Focus creates quality products



Single stage LED driver with low bus voltage

As the input voltage is divided by the interleaved unit and forms two boost circuits with switches in the half-bridge circuit which work in the DCM state with 180° phase shift, the system achieves a reliable

LTC487 Datasheet and Product Info , Analog Devices

The LTC487 is low power differential bus/line driver designed for multipoint data transmission standard RS485 applications with extended common



12-Gb/s low-power voltage-mode driver for multi-standard serial-link

This paper presents a 12-Gb/s power-efficient voltage-mode driver for multi-standard serial-link applications. The proposed driver combines the advantages of voltage-mode drivers and those of

An Electrolytic-Capacitor-Less PFC LED



Driver With Low DC-Bus Voltage

The proposed LED driver consists of a buck-boost type power-factor correction (PFC) circuit integrated with an asymmetric half-bridge LLC resonant converter. The buck-boost type PFC

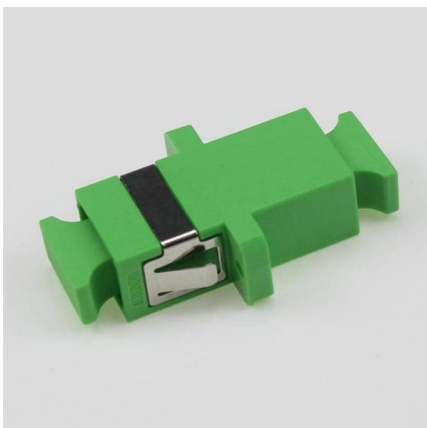
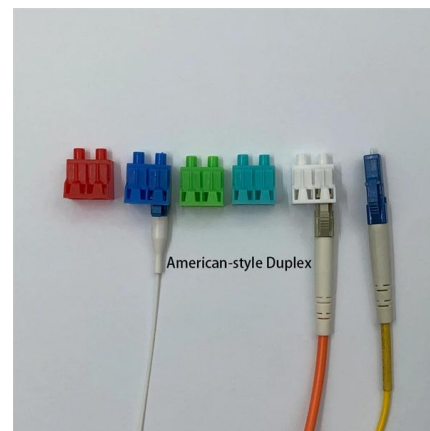


Solution Square : Troubleshooting a low voltage trip (LVT)

A low voltage trip occurs when the DC bus voltage drops below the trip point. It is important to note that the VFD does not directly measure input voltage. The VFD measures DC bus

Infineon IR22141SSPBF Driver, Half-Bridge Gate, 1200V, SSOP-24

The IR22141 gate driver family is suited to drive a single half bridge in power switching applications. These drivers provide high gate driving capability (2 A source, 3 A sink) and require low quiescent



Low-Side Drivers

The low side drivers come with low-side output channels to control power devices like MOSFETs and IGBTs.



ST solutions for high

Galvanically isolated drivers and interfaces, sigma-delta converters, intelligent power switches SIL ready enabled by native hardware features and safety libraries



MAX9163 DS

The MAX9163 high-speed bus low-voltage differential signaling (BLVDS) transceiver is designed specifically for heavily loaded multipoint bus applications. The MAX9163 operates from a single 3.3V



Undervoltage fault in drive - Drives - click2electro Forum

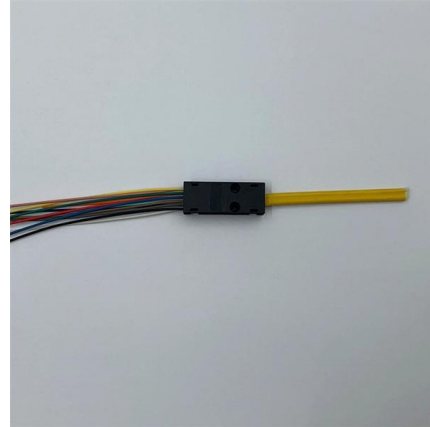
Cause : Undervoltage comes when the input voltage falls below the required level for proper operation. The cause of this fault is voltage supplied to



Configuring drive voltage limits FUV and FOV



Parameters Under voltage fault threshold FUV and Over voltage fault threshold FOV define the nominal HV DC bus voltage range that drive operates in. The purpose of these parameters are to set protect



Common Drive Faults Triggered by Undervoltage Conditions

Sustained undervoltage conditions can trigger several types of drive faults, particularly in variable frequency drives (VFDs), servo drives, and other motor controllers. Common faults include:

CAN Bus and Low Voltage

CAN Bus Network The WaveSculptor motor controller uses the CAN bus to receive commands and transmit telemetry, as well as to provide low-voltage DC power to



Designing a low-voltage motor drive

A low-current top-up charge pump, which becomes active with the high-side switch, is an inexpensive way to maintain the bootstrap capacitor



Design and analysis of a low-swing driver scheme for long

A solution to reducing the power dissipation of the drivers is to use lower supply voltages. However, by adopting a lower power supply voltage, the performance of the line drivers for global



Half-bridge gate drivers ease design with GaN in low-voltage systems

Rated for maximum rail voltage of 220V, the drivers integrate linear regulators to generate high-side and low-side 6 V gate signals and provide separate sink and source paths for



Protected DC Bus Input Power & Control Power Supply Ref. Des. for Low

Protected DC Bus Input Power and Control Power Supply Reference Design for Low-Voltage Servo Drives Description This reference design provides a protected DC bus supply for low-voltage DC



Bus Voltage

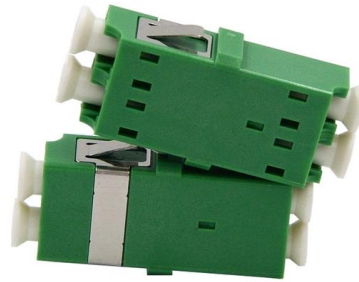
The system DC bus voltage is mainly determined by the propulsion motor voltage, desired generator voltage, load considerations, converter design, standard cable ratings, efficiency, and arc fault

PowerFlex 7-Class drives: HIM displaying In



Precharge and low DC Bus

Why is the HIM on my PowerFlex 7-Class AC Drive displaying "In Precharge" and I have very low DC Bus Voltage? Why my drive got very low DC bus voltage and what could be causing this?



Contact Us

For datasheets, pricing, or custom high-speed optical interconnect solutions, please visit:
<https://www.syropy.com.pl>