

# **Does the secondary distribution box have a busbar**





## Overview

---

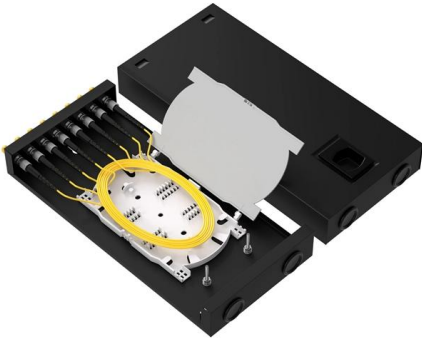
In , a busbar (also bus bar) is a metallic strip or bar, typically housed inside,, and for local high current power distribution, transmission, or switching substations. These boxes feature bottom entry and exit cables, front-opening doors, and main busbars connected with copper strips for optimal contact. With secondary selective service, each distribution transformer must be able to supply the entire load for maximum reliability benefits. What are the main distribution box components?

Common components include busbar, breakers (MCB), neutral/earth bars, enclosure, and optional RCCB/RCBO and SPD.



## Does the secondary distribution box have a busbar

---



### **Busbar in Electrical System: Types, Applications,**

Busbar in Electrical System: Types, Applications, Considerations, and Maintenance Electrical busbar is the most important component in power

### **What is a Bus Bar and Its Importance in Electrical Systems**

Renewable Energy Systems: Busbars are widely used in solar power and off-grid setups to connect batteries, charge controllers, inverters, and DC distribution components. Transportation and Mobile



### **Bus Bar Box Basic Explanation: Function, Structure and**

A bus bar box can maintain high power loads while minimizing voltage drops as one of the primary advantages. A metal bar composed of copper



### **Bus Bar Arrangement in Power Station:**

Bus Bar Arrangement in Power Station:When a number of generators or feeders operating at the same voltage have to be directly connected electrically, bus-bars

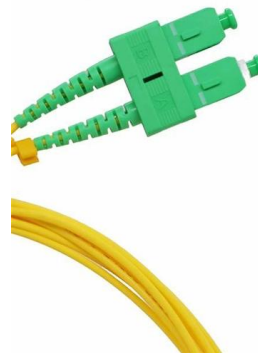


### **Busbars 101: A Comprehensive Guide**

Busbars operate as conductive bars that distribute electricity from incoming feeders to outgoing circuits within an electrical system. By providing a low-resistance path, busbars ensure efficient current

### **Busbar**

In electric power distribution, a busbar (also bus bar) is a metallic strip or bar, typically housed inside switchgear, panel boards, and busway enclosures for local high current power distribution, transmission, or switching substations. They are also used to connect high voltage equipment at electrical switchyards, and low-voltage equipment in battery banks. They are generally uninsulated, and have sufficient stiffness to be s



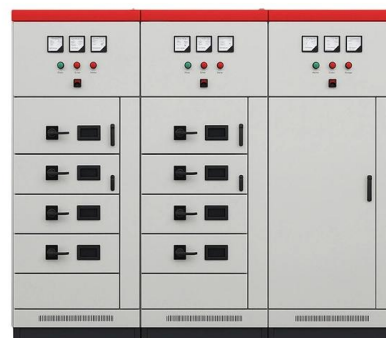
### **Electrical wiring and busbar arrangement of distribution box**

The distribution box is a low-voltage distribution box composed of switchgear, measuring instruments, protective appliances and auxiliary equipment assembled in closed or semi closed metal cabinet or



### The Anatomy of a Distribution Box: Key Components

A distribution box uses MCBs, RCDs, and busbars to protect circuits, prevent shocks, and ensure safe power distribution in homes and buildings.



### A Guide to Electrical Busbars: Common Uses & Design

Get answers for advantages and common uses for electric busbars, types of busbars, and how simulation tools complement the design process.

### Distribution Block vs. Wire Nuts or Bus Bars - When to

In electrical systems, managing multiple wire connections safely and efficiently is crucial. Whether you're wiring a control panel, automotive system, or





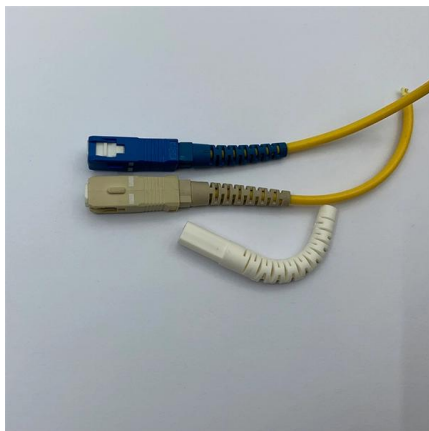
## Busbar Application in Data Centers: Comprehensive Guide

Introduction to Busbars in Data Centers In the rapidly evolving landscape of data centers, the need for efficient, reliable, and scalable power distribution is paramount. One technology that has gained



### What is Electrical Bus-Bar?

But in a large substation, the additional busbar is used in the system so that the interruption does not occur in their supply. The different type of electrical busbar



### Types of Busbars & Schemes - Explained with

Busbars serve as a unified platform for connecting multiple circuits, helping to cut costs, improve safety, and ensure reliable power distribution. They

### How Do MCCB Pan Assemblies and Busbars Work Together in Distribution Boxes?

The pan assembly provides mechanical mounting and electrical connection points for circuit breakers, while busbars serve





## Electrical Bus Bar Connections - A Detailed Overview

A busbar box is an enclosure that houses the bus bar connections and provides an additional layer of protection. These boxes are designed to safeguard



### Busbar Power Distribution Explained: Benefits, Types,

Discover the benefits, types, and applications of busbar power distribution systems. Learn why busbars offer efficient, safe, and space-saving



### Busbars Basics

What do busbars do? Busbars perform a very simple but important function in an electrical system. One is to distribute power from a large positive

### Types of Bus Arrangements in Substations - A

Learn different types of bus bar arrangement in substations, such as single bus with bus sectionalizer, double bus system, main and transfer bus



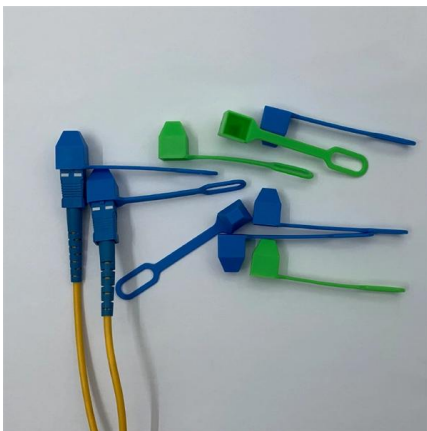
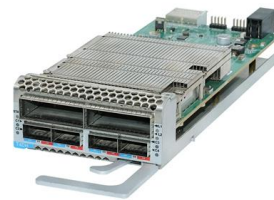


### What is a Bus Bar? The Complete Guide

A bus bar is an essential component of electrical distribution systems. Simply put, a bus bar is a conductor that serves as the central hub for distributing

### What Is a Bus Bar in an Electrical Panel? Insights, Uses

Conclusion In sum, busbars have etched their significance in the complex landscape of electrical power distribution. Their structural diversity,



### Switchboard Construction Basics For Engineers , EEP

The power is then distributed from a load center to various branch circuits for lighting, appliances, and electrical outlets. The role of a switchboard is

### What Are Electrical Busbars? Types, Components, and their Applications

Learn what electrical busbars are, their types, and components, and why they are essential for efficient power distribution in modern systems.





## Six common bus configurations in substations up to 345 kV

Comparison of bus configurations This technical article explains six most common bus configurations used for distribution, transmission, or switching



### Bus bar - reliable power distribution for various applications

A bus bar is an essential component in electrical systems, ensuring efficient power distribution. It plays a crucial role in maintaining a reliable power



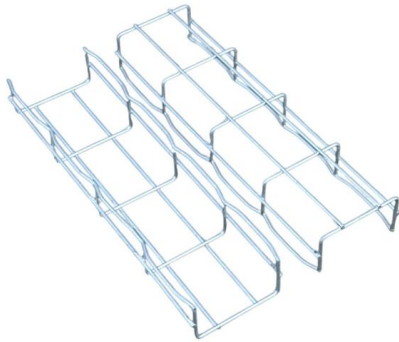
### "Busbar Systems"

This switching condition is also implemented in the operation of double busbars. Faulty switching instructions in this context are ignored, and indicated by means of a warning tone and a flashing light.

### What Is a Neutral Bus Bar and How Does It Work?

The electrical panel, often called the breaker box, is the central distribution point for your home's power. Among its components, the neutral bus bar is necessary for the safe and proper function of every





### **The Meaning and Function of Primary, Secondary, and Tertiary**

These boxes feature bottom entry and exit cables, front-opening doors, and main busbars connected with copper strips for optimal contact. They also include metering systems, ensuring

### **Distribution Boxes: Types and Functions**

Learn what an electrical distribution box (DB/distribution board) is, its main components (MCB/RCCB/RCBO, SPD, busbar) and common types.



## **Contact Us**

---

For datasheets, pricing, or custom high-speed optical interconnect solutions, please visit:  
<https://www.syropy.com.pl>