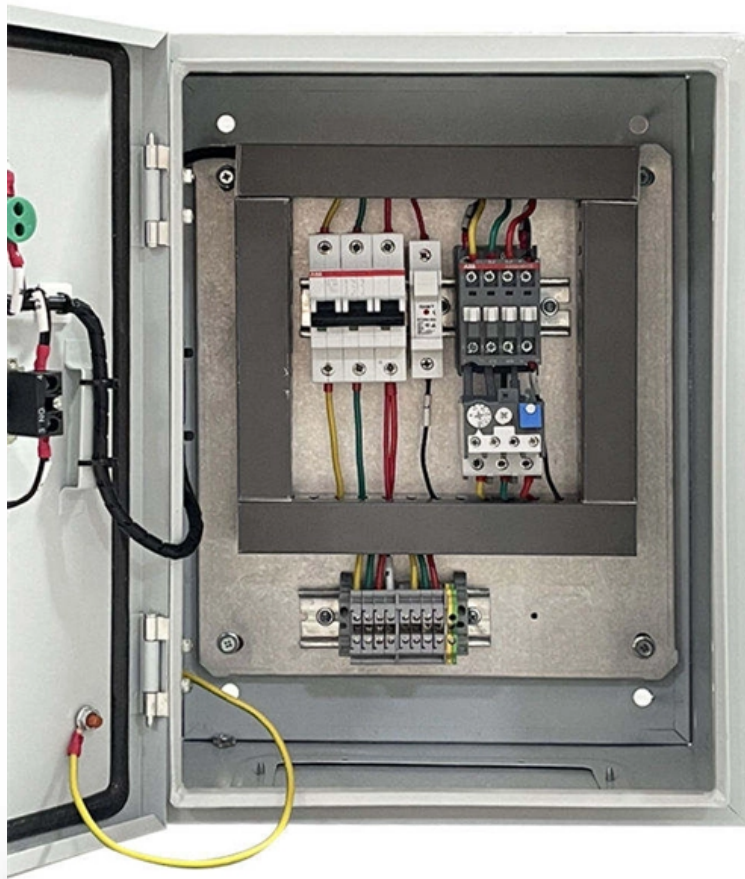


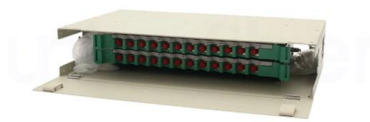
Does the integrated bridge require replacement of the cable trays





Does the integrated bridge require replacement of the cable trays

Installation of Cable Tray, Trunking And Accessories



Before beginning installation, be sure that the method statement for installation of cable tray, trunking, and accessories is approved by the project and construction manager before the

RECOMMENDED SPECIFICATIONS OF JUNCTION BOX AND

These Guidance Notes provide ABS recommendations for the design and construction of cable trays and junction boxes. These Guidance Notes are applicable to fixed and floating offshore structures as



Cable Tray Grounding: Power, Instrumentation, and

Cable tray systems are in the path of ground fault currents. Cable tray systems are bonded together through their bolting, connectors splice plates, clamps, and bonding jumpers where there are gaps in

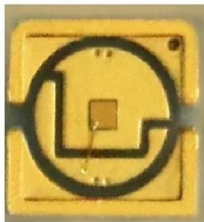
Introduction to 3 types of cable bridges and their

It is most suitable for laying computer cables, communication cables, thermocouple cables, and other highly sensitive system control cables, etc. It has a good effect



Cisco Ultra-Reliable Wireless Backhaul FM Ponte kit

The Cisco FM Ponte kit can only be operated in Bridge mode, creating a single point-to-point connection between two wireless network segments. A simplified example of a Bridge mode connection is



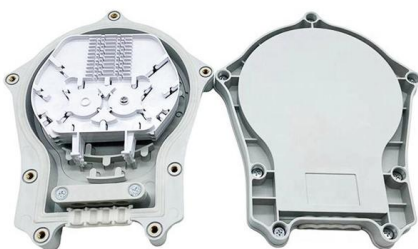
Cable Tray Today: An overview , Cable Tray Institute

This style of cable tray is available non-ventilated or ventilated, as shown in (figure D). Center supported cable trays Today, another type of cable tray is available for cable support and management. These



Cable Tray Installation Guidelines for Engineers

Cable trays shall be installed according to the latest revision of the NEC, NEMA VE 2, and manufacturer's installation instructions. Cable tray elbows shall be supported per NEMA VE 2





INSTALLATION GUIDE

To ensure that the complete ladder tray wiring system performs as designed, it is important that it is properly installed. Personal injury as well as property damage will result if proper installation and



Avoiding Mistakes in Instrumentation Cable Tray

Learn how to avoid common mistakes in instrumentation cable tray installation. Follow IEC standards and EPC best practices for safe, reliable performance.

GUIDE CABLE TRAYS TECHNICAL

If it has excellent electrical continuity and is integrated in the installation's equipotential bonding system, a metal cable tray reduces the coupling's impact and thus contributes to good EMC of the electrical



GUIDE CABLE TRAYS TECHNICAL

In accordance with its continuous improvement policy, Legrand reserves the right to change the specifications and illustrations without notice. All illustrations, descriptions and technical information





Codes and Standards , Cable Tray Institute

The Cable Tray Institute is making available the current edition of this practical guide for the proper installation of aluminum or steel cable tray systems. These guidelines will be useful to engineers,



Method Statement installation of Cable Trays and Ladders

This method statement covers the site installation of the cable tray & ladders and the requirements of checks to be carried out.

Best practices for underfloor cable management

Modern data center designs must develop cable organization plans with considerations to account for day-to-day operation, operational efficiency of equipment, optimal performance, and the facility's



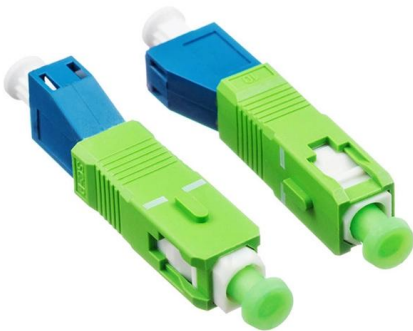
WyrGrid Overhead Cable Tray Routing System

Panduit offers industry-leading Cable Routing Systems as part of comprehensive, integrated Data Center Solutions to effectively manage and protect high-performance communication, computing,



Cable trays evolving with building design , Cabling

For example, if an installation requires running a cable tray over a road, the cable tray needs to be strong enough to bridge 30 feet between supports. At the other

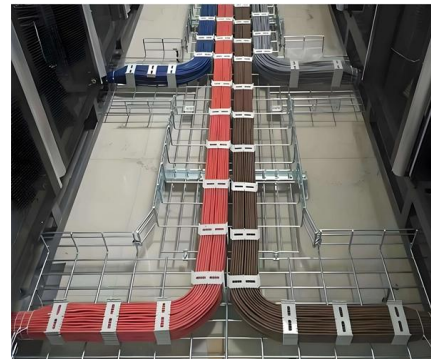


Cable Tray SHIB NAL

Cable trays are not raceways, but they are treated as a structural component of a facility's electrical system. Cable trays are a part of a planned cable management system to support, route, protect and

ITER Cabling Handbook

If trenches contain only one row of cable tray, it is acceptable to have access to the cable tray from the ground level without the need for an excavated access space along the cable tray path.



7 Types of Cable Trays: How to Choose the Right One

Cable tray systems are engineered support structures designed to route, support, and protect insulated electrical cables used for power distribution,



Cable Tray Grounding: Power, Instrumentation, and Telecommunications

Cable tray systems are bonded together through their bolting, connectors splice plates, clamps, and bonding jumpers where there are gaps in the cable tray system. Cable tray systems are not required



B-Line series Cable Tray Design Considerations

As an industry leader in cable tray, Eaton offers one of the widest ranges of cable management solutions available in the market today with its B-Line series portfolio. With unmatched quality and service, we

CABLE TRAYS GENERAL INFORMATION AND

General information of Kiraç Metal Cable Trays and installation guide are arranged in accordance with IEC 61537 standards and this document has been prepared for



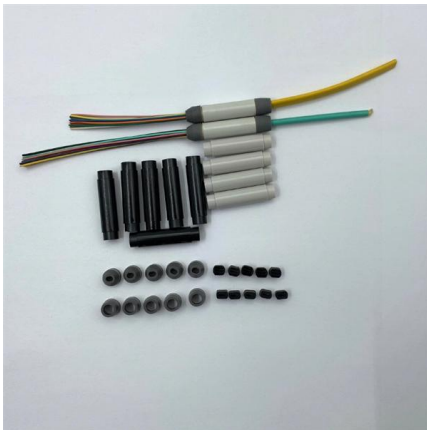
The difference and selection between cable trays and trough boxes

For environments that require frequent cable replacement, the flexibility of the cable tray makes cable replacement easier and faster. In addition, the bridge also has high corrosion resistance



100+ Essential Questions Answered About Cable Trays:

Discover over 100 expert answers about cable trays, covering key topics like material selection, load capacity, installation methods, and maintenance.

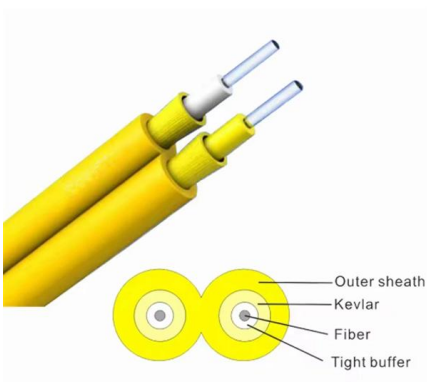


A Guide to Installing and Supporting Electrical Cable Trays

A professional guide to installing electrical cable tray systems per NEC Article 392. Covers support, securing cables, and fill calculations.

Annex I

All PIC cable trays shall be equipped with metallic cover, whilst non-PIC cable trays not required cover from safety point of view. The Non-PIC sensitive trays are covered for Electromagnetic compatibility



Cable Tray Technical Guide A practical guide to product selection and

Cable tray is considered to be a system. It must provide continuous support for cables, and the electrical continuity of the cable tray system must be maintained.



FactSheet

Electrical Safety Hazards of Overloading Cable Trays According to the 2005 National Electrical Code® (NEC), a cable tray system is " unit or assembly of units or sections and associated fittings forming



Contact Us

For datasheets, pricing, or custom high-speed optical interconnect solutions, please visit:

<https://www.syropy.com.pl>